

1982

## Microscopy in the Study of Fats and Emulsions

J. M. deMan

Follow this and additional works at: <https://digitalcommons.usu.edu/foodmicrostructure>



Part of the [Food Science Commons](#)

---

### Recommended Citation

deMan, J. M. (1982) "Microscopy in the Study of Fats and Emulsions," *Food Structure*: Vol. 1 : No. 2 , Article 10.

Available at: <https://digitalcommons.usu.edu/foodmicrostructure/vol1/iss2/10>

This Article is brought to you for free and open access by the Western Dairy Center at DigitalCommons@USU. It has been accepted for inclusion in Food Structure by an authorized administrator of DigitalCommons@USU. For more information, please contact [digitalcommons@usu.edu](mailto:digitalcommons@usu.edu).



MICROSCOPY IN THE STUDY OF FATS AND EMULSIONS

J.M. deMan

Department of Food Science, University of Guelph, Guelph, Ontario,  
Canada N1G 2W1

Abstract

Plastic fats consist of a three-dimensional network structure of crystals in which liquid oil is trapped. This crystal network is held together by weak attractive forces, the nature of which is not definitely established. Crystal size is dependent on temperature history and is subject to polymorphic transitions which greatly affect the microstructure of the system. The microstructure of fats has been investigated by using polarized light microscopy, electron microscopy and X-ray diffraction analysis. Recently, a permeametric method has been developed which enables the determination of the specific surface area of the crystals in a fat. This method is a useful complement of the microscopic techniques. Scanning electron microscopy has not been widely used in studying fat crystal structures. The use of microscopy in the study of microstructure of emulsions presents even greater problems than in the fat field. Emulsifiers may form liquid crystalline mesophases which may be studied by polarized light microscopy and X-ray diffraction analysis.

---

Initial paper received February 8, 1982.  
Final manuscript received October 14, 1982.  
Direct inquiries to J.M. deMan.  
Telephone number: 519-824-4120, Ex. 2515.

---

KEY WORDS: microscopy, fat crystallization, emulsions, phase changes, X-ray diffraction, polarized light microscopy, polymorphism, melting and solidification of fats, emulsion microstructure, liquid crystalline structures, mesomorphic phases.

Introduction

It is becoming increasingly apparent that our understanding of what is now being described as the "functional properties" of many foods is dependent on a knowledge of their fine structure. This can be expressed in the following inter-relationship:

chemical composition → physical  
structure → physical properties

This indicates that microstructure is dependent on the chemical components of the food, and in turn, the nature of the microstructure determines the physical properties which include a number of functional properties. Fats and fat containing foods are no exceptions to this rule and much research has been devoted to the microstructure of fats. There are a number of factors which make these products unusual and the study of their microstructure difficult. Probably the most important of these is the influence of temperature. Not only is the microstructure of fats temperature dependent, it also depends on temperature history so that two samples of a fat examined at the same temperature may have different properties depending on their temperature history. The physical structure of fats may also change with time at constant temperature because of polymorphic transformations. These factors make it necessary for research on fats and fatty foods to be conducted in or with temperature controlled facilities. The study of emulsions also involves unusual problems since the membrane structures around emulsified droplets and their properties require specialized techniques for their observation and measurement. A good general source of information is the book "Food Microscopy" (Vaughan, 1979).

Microstructure of fats

Fats differ from oils in that they contain solid triglycerides at room temperature. This mixture of solid and liquid components exhibits the property of plasticity. Triglycerides are long chain molecules with molecular weights in the neighbourhood of 900. The crystallization behaviour of such compounds responds to the normal conditions of nucleation and crystal growth (Figure 1), and these factors are determined by the degree of supercooling. If the extent of supercooling is low, only few nuclei will form and crystals will grow to a relatively large size. If heat is rapidly removed, i.e. high level of supercooling, many nuclei will form and many small crystals will be formed. The situation is complicated by the phenomenon of mixed crystal formation (also called solid solutions). Fats contain many different glycerides which closely resemble each other but have slightly different melting points. Rapid cooling (high supercooling) will result in inclusion of different types of triglycerides in the crystal lattice. The result is higher solid fat content at low temperature. Tempering of such rapidly cooled fats at temperatures below the melting point will lead to recrystallization and reduction in solid fat content. An example taken from the work of Mertens and deMan (1972) illustrates this phenomenon (Table 1).

Fats are subject to some additional phenomena when crystallization occurs. Long chain compounds including the triglycerides show polymorphism, i.e. they can occur in several crystal modifications. These different crystal forms are distinguishable by X-ray diffraction, by infra-red spectrophotometry, by melting point determination and by differential thermal analysis. It is generally agreed that fats occur in three

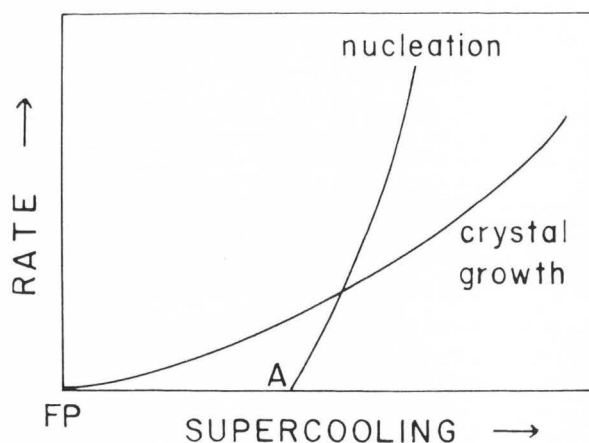


Fig. 1. Schematic representation of the rate of nucleation and crystal growth as influenced by supercooling. A = start of nucleation, FP = freezing point.

major polymorphic forms, named alpha, beta-prime and beta in order of increasing stability (Lutton, 1972). The packing of the triglyceride molecules in the crystal lattice determines the spacings between adjoining molecules. The cross-sectional structures determine the short spacings which can be determined by X-ray diffraction. The arrangement of long chain compounds in a cross-sectional view of the crystal lattice has been given by Lutton (1950) and is represented in Figure 2. The alpha form is hexagonal and is the least organized of the three forms. It has a low density structure with a cross section of about 0.2 nm<sup>2</sup> and the chains are packed in an untilted or perpendicular fashion. This form is usually obtained on rapid cooling of the melt. The beta-prime structure is orthorhombic and is in a tilted chain

Table 1. Solid fat content of a margarine oil and a frying fat with and without tempering at 25 C for 30 min. Initial cooling at 0 C for 60 min.

| Sample     | Treatment    | Solid fat % at |      |      |     |
|------------|--------------|----------------|------|------|-----|
|            |              | 10°            | 20°  | 30°  | 40° |
| Margarine  | Tempered     | 37.6           | 24.2 | 11.7 | 0.1 |
|            | Non tempered | 47.3           | 29.8 | 11.9 | 0.3 |
| Frying fat | Tempered     | 63.7           | 45.7 | 25.8 | 3.4 |
|            | Non tempered | 75.8           | 55.1 | 26.2 | 4.2 |

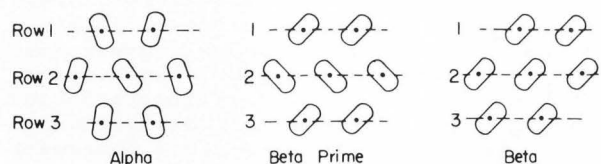


Fig. 2. Cross-sectional structures of long chain compounds. (Source: E.S. Lutton, 1972. Reproduced with permission).

arrangement. This is the more common form for many natural fats. It is a more closely packed structure than the alpha form. The beta form has all of the chain axes oriented in one way as shown in Figure 2, and is triclinic. Both beta-prime and beta forms have an approximate cross-sectional area of about 0.185 nm<sup>2</sup>. These three cross-sectional structures give rise to short spacings as determined by X-ray diffraction and indicated in Figure 3.

The development of the knowledge about polymorphism has not been without controversy. This mainly involved the idea of the existence of a glassy state as proposed by Malkin (1954), but this is now generally accepted as erroneous. A form intermediate between beta prime and beta has been proposed by Hoerr (1960). A more unified and rigorous treatment of polymorphism has emerged in the recent literature (Larsson, 1964, 1966, 1972). Examples of the application of this knowledge to problems in fat crystallization are studies on the phase behavior of hydrogenated fats by Riiner (1971) and studies on cocoa butter and confectionery fats using programmed temperature X-ray diffraction and differential scanning calorimetry by Chapman *et al.* (1971).

X-ray diffraction patterns can be recorded with a Debye-Scherrer camera or

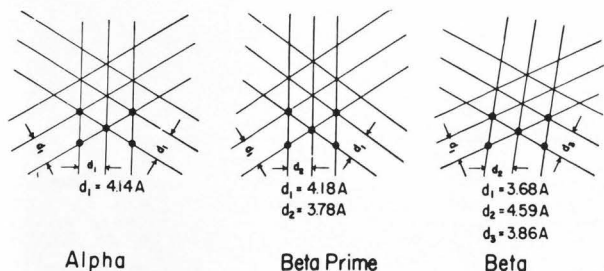


Fig. 3. Cross-sectional structures of long chain polymorphic modifications. (Source: E.S. Lutton, 1950. Reproduced with permission). *d* spacings expressed in Angstrom units (A).

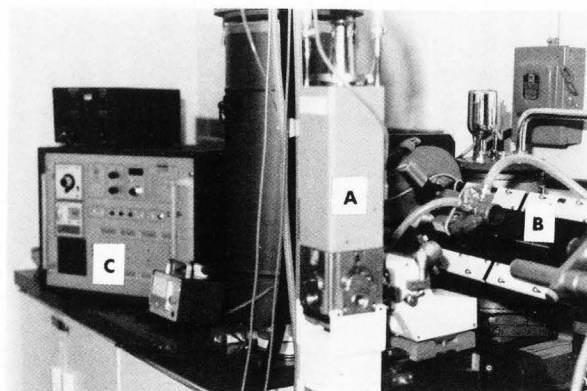


Fig. 4. Guinier-Simon X-ray diffraction camera with temperature programming capability. A = X-ray tube, B = camera, C = control console.

with a diffractometer, the equipment commonly used by crystallographers. The Debye-Scherrer patterns appear as concentric circles on the X-ray film. This type of equipment has the drawback of being useable only at room temperature which does not permit the study of polymorphic transitions as a function of temperature. Special cameras for this purpose have been developed such as the DPT camera used by Aleby (1969) and a particularly useful instrument is the Guinier-Simon camera with integral temperature programming capability (Figure 4). The different polymorphic forms have different melting points and different crystal habits. Another useful X-ray camera is the triple focussing Guinier camera.

Polymorphism and the structure of triglyceride crystals can also be studied by using the electron microscope for electron diffraction of single crystals. This procedure has been demonstrated by Buchheim (1970a) for the study of trilaurin crystals. Methods were developed for preparing suitable crystals of trilaurin, but this procedure may not be suitable for crystals of natural fats. Using this procedure, Buchheim (1970a) found evidence for two beta-prime modifications of trilaurin, one a vertical and the other a tilted form. Two beta modifications of trilaurin were described.

Fat crystals can be observed with the aid of polarized light microscopy. According to Hoerr (1960), crystals of the alpha form appear as platelets of about 5 μm size. Since the alpha form is unstable, it is hard to obtain photographs of these crystals. The beta prime crystals are described as small needles not exceeding one μm in length. Beta

crystals are large, ranging from 20 to 100  $\mu\text{m}$  in size and often growing in clumps. Such clumps of large crystals can lead to visually noticeable graininess in fats. The packing of triglyceride molecules in the crystal lattice is influenced by the variety of molecular sizes present in natural fats. The greater the non-uniformity in size, the more difficult it is for the beta form to occur, and the beta-prime form will then be the predominant one. There are natural fats which have relatively uniform fatty acid compositions and these will tend to recrystallize in the beta form. Canola and sunflower oil are examples of this behaviour. Figure 5 shows polarized light micrographs of hydrogenated Canola oil. When this fat was rapidly cooled, the crystal structure included aggregates of up to 10  $\mu\text{m}$  (Figure 5A). After tempering for a day at 25 C, there were more small crystals in evidence of up to about 2  $\mu\text{m}$  in size (Figure 5B). Ascribing definite polymorphic modifications to fat crystals of

specific morphology is probably not justified for many natural fats. This might be applicable in special cases only, such as for highly purified simple triglycerides. The recrystallization of fats into the beta form is a disastrous occurrence when taken place in a consumer product. The product becomes visibly grainy with a mottled color appearance and acquires a crumbly texture (Figure 6) and the crystal structure shows a mass of large needle shaped crystals (Figure 7). This is a good example of how the arrangement of molecules in the crystal lattice directly affects appearance factors such as smoothness and texture. Some selected surface active agents have been found helpful in preventing or delaying the beta-prime to beta transformation in fats. This phenomenon is not well understood and studies are under way to elucidate the mechanism of this action. Recently, Garti *et al.* (1981, 1982) described the effect of food emulsifiers on crystal structure and habit of

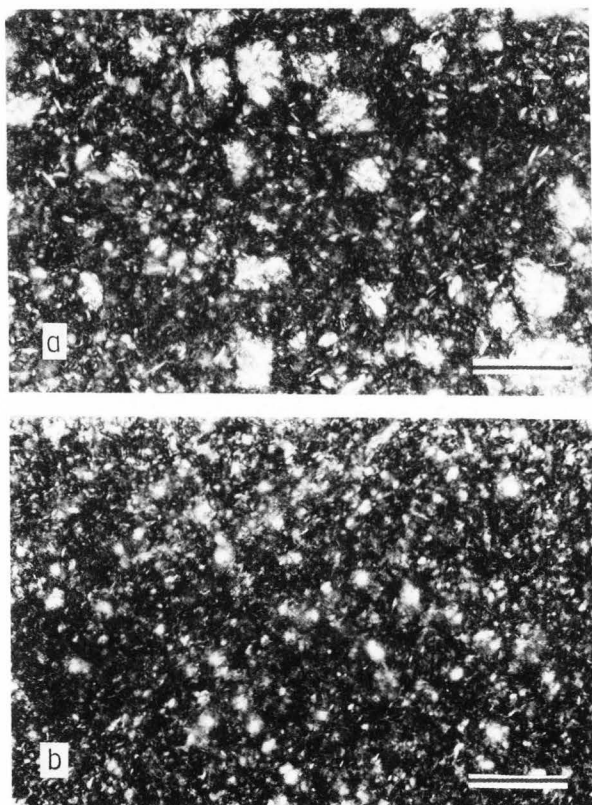


Fig. 5. Polarized light photomicrographs of hydrogenated Canola oil.  
 a. After rapid cooling at -15 C.  
 b. After rapid cooling at -15 C and tempering for one day at 25 C.  
 S.M. = 5  $\mu\text{m}$ . (S.M. = Scale Marker)



Fig. 6. Mottled appearance of re-crystallized Canola margarine. One pound print broken in two pieces.

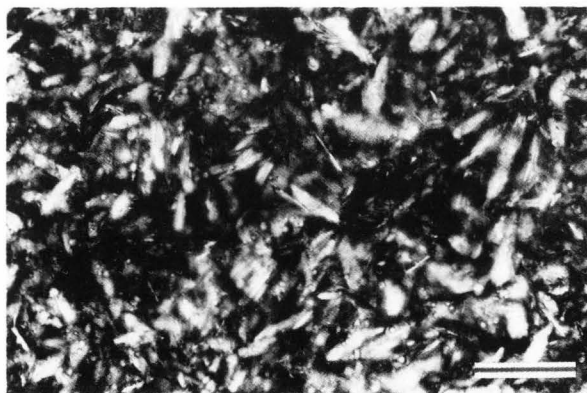


Fig. 7. Crystal structure of Canola oil margarine as seen in the polarizing microscope. This margarine is re-crystallized in the beta modification.  
 S.M. = 5  $\mu\text{m}$ .

stearic acid. The crystal habit was examined by using scanning electron microscopy. It was assumed that the stearic acid could serve as a model for the more complex triglyceride mixtures but this is by no means certain. Hernqvist *et al.* (1981) have described the strong stabilizing effect of 1,2-diglycerides on the  $\beta'$  triglyceride crystal form.

The polymorphism of fats can also be studied by infra-red spectroscopy, a technique extensively investigated by Chapman (1965) and by deRuig (1977). The major area of interest in the infra-red region is between 690 and 770  $\text{cm}^{-1}$ . An example from Woodrow and deMan (1968) (Figure 8) shows the formation of the alpha form on cooling milkfat from 40 to 0 C and the formation of the beta prime form after holding at 5 C for ten hours.

Short spacings observed by X-ray diffraction methods are in the order of 0.1 nm. Polarized light microscopy makes it possible to view crystals in the range

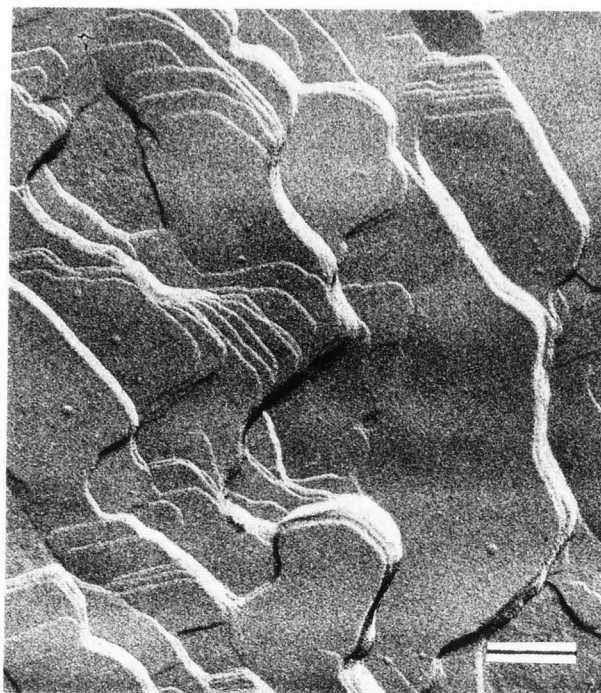


Fig. 9. Electron micrograph of trilaurin crystals made by the carbon-platinum replica technique. (Source: Buchheim, 1970a. Reproduced with permission). S.M. = 0.2  $\mu\text{m}$ .

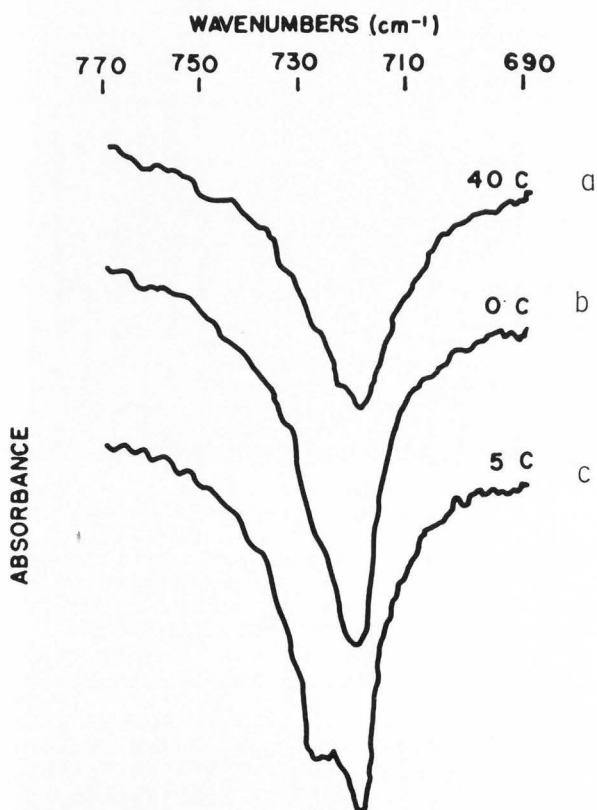


Fig. 8. Infra-red spectra of milkfat at 40 C (a) after rapid cooling to 0 C (b) and after holding at 5 C for ten hours (c). (Source: Woodrow and deMan, 1968. Reproduced with permission).

of 0.5 - 100  $\mu\text{m}$ . For details in the area below 0.1  $\mu\text{m}$  electron microscopy is required. Since fine structures of fats are delicate and temperature sensitive, special techniques are required. Initial electron microscopy studies involved ultra-thin preparations and carbon replica techniques. An example is an electron micrograph of trilaurin crystals produced by Buchheim (1970a) (Figure 9). This figure presents a clear view of the layered architecture of the trilaurin crystal. Much of the work concerned with electron microscopy of fats has been carried out at the German Federal Dairy Research Institute at Kiel and has been mainly focussed on milkfat structure in butter. The work involving fixation, thin sectioning and carbon replica formation produced micrographs showing little more than the outlines of fat globules (Figure 10) (Knoop and Schulz, 1960). More recently the work of this group has involved freeze fracturing, followed by platinum-carbon replica preparation (Buchheim and Precht, 1979; Precht and Buchheim, 1979; 1980; Precht and Peters, 1981). Based on this work, the fat globules in cooled cream have been divided into 4 types based on how much of the fat is in the solid form. Figure 11 represents a fat globule which is stated



Fig. 10. Electron micrograph of the fat globule structure in butter. (Source: Knoop and Schulz, 1960. Reproduced with permission). S.M. = 1  $\mu$ m.

to be mostly liquid. However, the highly magnified section appears as a definitely layered structure. Figure 12 is a micrograph of a fat globule with more irregularly formed crystal aggregates. The conclusion of this work is that the amount of solid fat in different fat globules in cream varies widely. This would mean that the fatty acid composition of the fat in the globules would be different, and this is not supported by any previous evidence. Walstra (1976) has discussed the effect of the state of dispersion of fat on its crystallization behavior and on the physical properties of the products. He indicates that emulsified fat needs a much higher degree of supercooling to initiate nucleation, and, therefore, the amount of solid fat in emulsion droplets may be considerably less than in the same fat in bulk form. The microstructure of fat in butter is described by Precht and Buchheim (1980). Two figures from this paper show one area of liquid and crystalline fat (Figure 13) and crystal lamellae of butter after 10 days' storage (Figure 14). The layered structure of this crystalline fat is

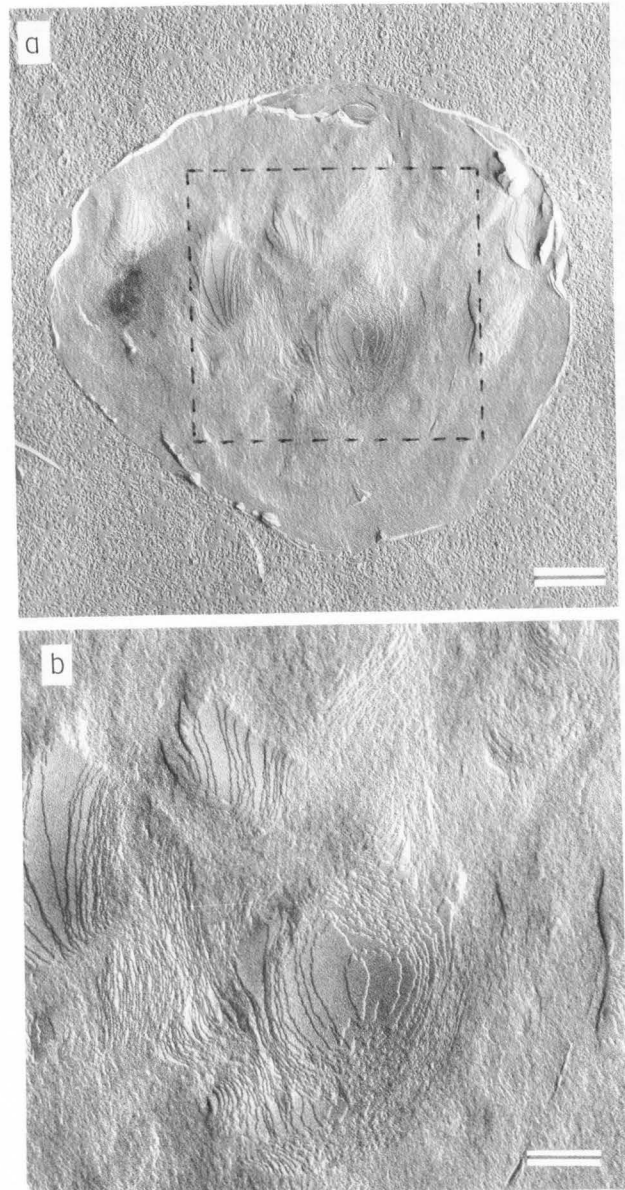


Fig. 11. Electron micrograph of a fat globule in cream with liquid milkfat. b represents an enlarged section (dotted rectangle) of a. (Source: Buchheim and Precht, 1979. Reproduced with permission). S.M.a = 1  $\mu$ m, b = 0.2  $\mu$ m.

clearly visible at different magnifications. These authors have attempted to relate the results of the electron microscopy studies to the known rheological behavior of butter. This is a difficult task, especially since the fine structures observed by electron microscopy bear little apparent relation to observations made by polarized light microscopy. The question arises as to whether the rheological properties of fats are more

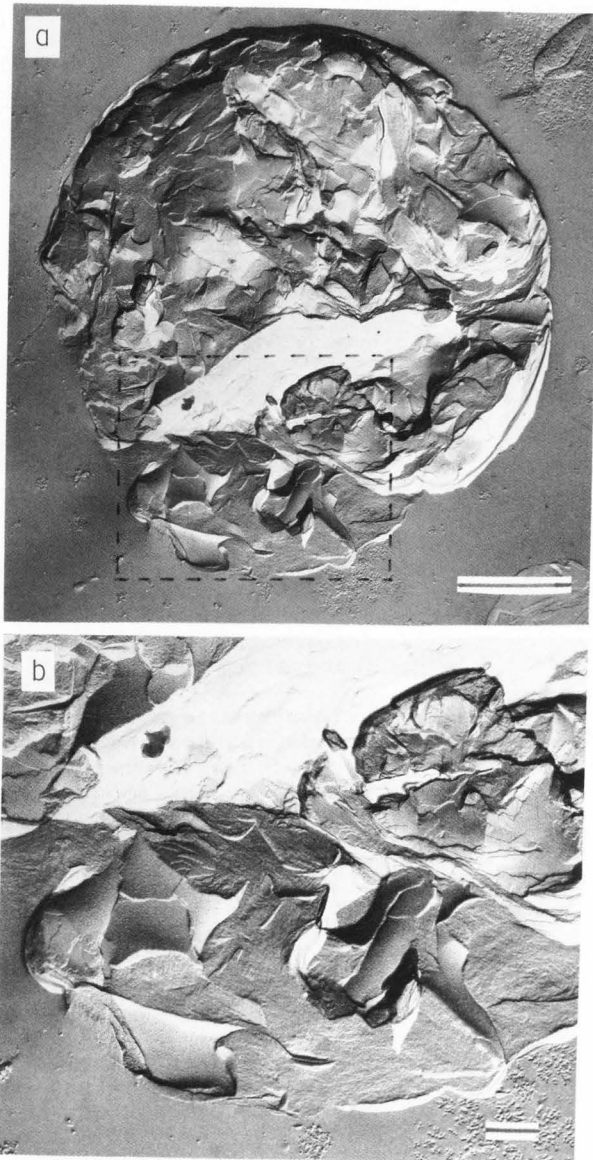


Fig. 12. Electron micrograph of a fat globule in cream with solid milkfat. b represents an enlarged section (dotted rectangle) of a. (Source: Buchheim and Precht, 1979. Reproduced with permission). S.M.a = 1  $\mu$ m, b = 0.2  $\mu$ m.

influenced by the internal structure of the crystals than by their ultimate size and pattern of interaction. It is generally agreed that the solid fat content of plastic fats is the major factor determining their rheological behavior. Solid fat content can be measured quantitatively by dilatometry or nuclear magnetic resonance (both wide line and pulsed NMR). It is possible to obtain an idea of the shape and size distribution of crystals by polarized light and electron microscopy. However, these latter tech-



Fig. 13. Electron micrograph of liquid (A) and solid (B) fat in 10 day old butter. (Source: Precht and Buchheim, 1980. Reproduced with permission). S.M. = 0.2  $\mu$ m.

niques are not quantitative. Recently, a method has been developed for determination of the specific surface area of the crystals in a plastic fat by permeametry (deJager *et al.*, 1963, Riiner, 1971). The method is based on the subsidence of the liquid phase of a disperse system under the influence of compression. The compressive force is delivered by a constant vacuum applied to a fat sample. This method promises to be a useful tool in the study of fat microstructure and will hopefully compliment the results obtained by microscopic methods. Although the equipment itself is relatively simple, the associated vacuum control instrumentation is not (Figure 15). Riiner (1971) has applied this method to relate polymorphic transitions to crystal sizes in hydrogenated fats. Transition of the beta-prime to beta modification in hydrogenated sunflower oil reduced the number of crystals by a factor of fifty as determined by the permeametric method.

The objective of studies of the microstructure of fats is to obtain a better understanding of the physical properties, especially rheology, with the aim of better control of such properties.



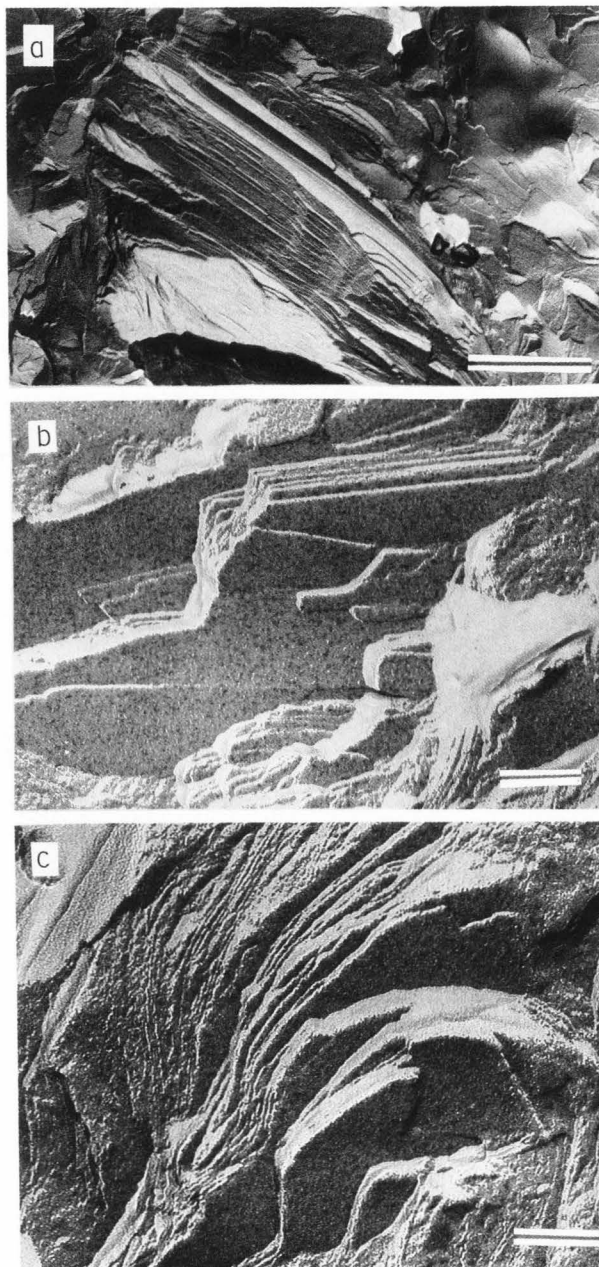


Fig. 14. Crystal structures of fat in 10 day old butter. (Source: Precht and Buchheim, 1980). Reproduced with permission). S.M.a = 1  $\mu$ m, b = 0.1  $\mu$ m, c = 0.1  $\mu$ m.

Excellent methods for this purpose are now available which should lead to a rapid advancement in our knowledge. However, the usefulness of electron microscopy in this field at this time is limited. It is to be hoped that improved preparation and handling techniques can expand the application of electron microscopy of fats in the future.

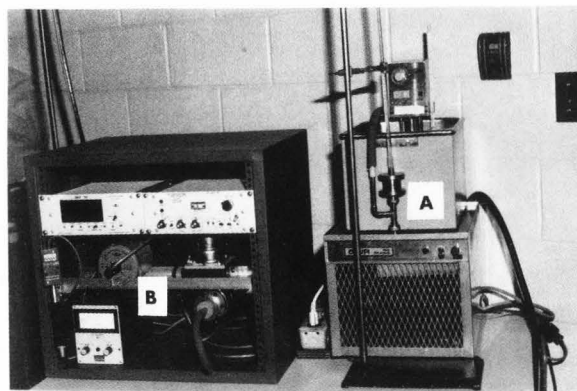


Fig. 15. Equipment for determination of the specific surface area of fat crystals by the permeametric method. A = permeametry instrument with capillary attached, B = vacuum control system.

#### Microstructure of emulsions

Emulsions are disperse systems of two immiscible liquids stabilized by an emulsifier or combination of emulsifier(s) and stabilizer(s). The importance of associative structures of emulsifiers has been given increasing emphasis and liquid crystalline structures are an important aspect of many emulsions. The International Union of Pure and Applied Chemistry defines an emulsion as follows: "In an emulsion liquid droplets and/or liquid crystals are dispersed in a liquid" (Friberg, 1976). Food emulsions contain natural emulsifiers and/or synthetic ones. Some food emulsions, especially those based on dairy products have a fat phase which is not liquid but partly solid and this results in special types of microstructure and properties. Proteins are often the main emulsifiers in food emulsions in many cases in combination with phospholipids and other substances. The original milkfat globule membrane in milk as it leaves the udder has been extensively studied and consists of a complex of several proteins and phospholipids as well as several minor components including enzymes and metals. It is possible to emulsify oils or fats in milk serum (skimmilk) and a stable emulsifier layer is formed almost instantaneously. This also happens when milk is homogenized. The newly formed globule membranes in homogenized milk consist of protein. The conformation of proteins at interfaces and the role of these proteins in stabilizing emulsions has been described by Graham and Phillips (1974). They have visualized the structure of two proteins at the interface (Figure 16). One of



Fig. 16. Schematic representation of the structures of absorbed films of  $\beta$ -casein and lysozyme at interfaces at different surface concentration.  $\beta$ -casein (disordered, flexible) left column, lysozyme (globular, rigid) right column. Surface concentration top row  $<< \Gamma_{sat}$ , middle row  $\approx \Gamma_{sat}$ , bottom row  $> \Gamma_{sat}$ . (Source: Graham and Phillips, 1974. Reproduced with permission).

these is  $\beta$ -casein which has a disordered structure and the other is a globular protein, lysozyme. Protein membranes formed in emulsions containing milk proteins do not have the liquid crystalline structure demonstrated with certain emulsifiers. As a consequence, the globules show no birefringence as is indicated in the polarized light photomicrograph of an emulsion of cottonseed oil in skimmilk (Figure 17). The birefringence seen in cream when examined under polarized light at 5 C results from the layers of crystallized milkfat which are formed when the milkfat inside the globules crystallizes (Figure 18). The churning of cream to produce butter involves the destabilization of a limited number of

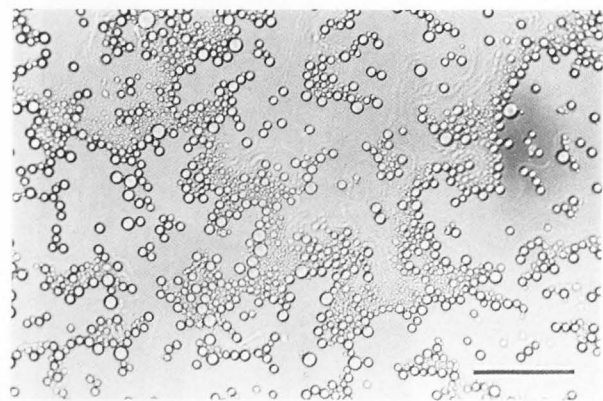


Fig. 17. Emulsion of cottonseed oil in skimmilk as seen in the polarizing microscope at 5 C. S.M. = 5  $\mu$ m.

these globules and the expelled liquid fat acts as a cementing material to bind the remaining globules together. For this reason, the microstructure of butter as seen with polarized light is remarkably similar to that of cream (Figure 19). The nature of the birefringent layer of fat globules in milk or cream was clarified by Buchheim (1970b). He used electron microscopy to demonstrate the presence of crystallized fat in the peripheral layers of the globules.

It is now recognized that many emulsifiers interact in a number of ways with both the aqueous and lipid phases and these interactions take the form of liquid crystalline structures or mesomorphic phases. The nature of these liquid crystalline structures has been found to influence viscosity and elasticity of interfacial films with a resultant effect on emulsion stability (Krog,

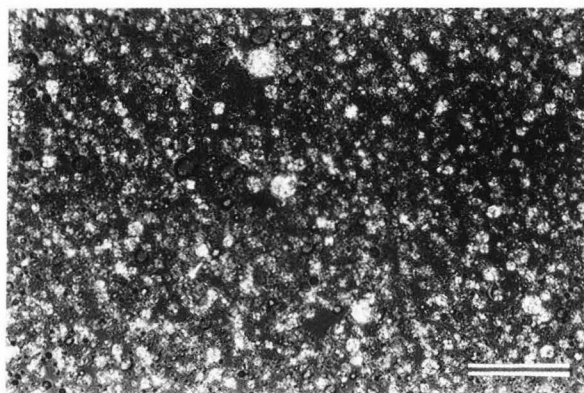


Fig. 18. Whipping cream as seen in the polarizing microscope at 5 C. S.M. = 5  $\mu$ m.

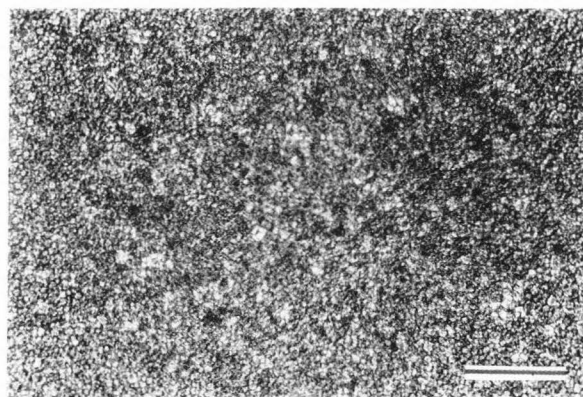


Fig. 19. Crystal structure of butter as seen in the polarizing microscope at 5 C. S.M. = 5  $\mu$ m.

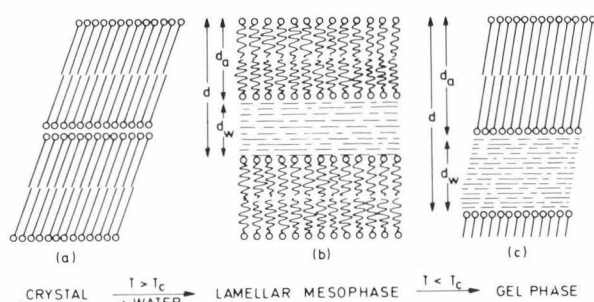


Fig. 20. Schematic model of the formation of a liquid crystalline, lamellar mesophase and the  $\alpha$  crystalline gel phase. (Source: Krog and Lauridsen, 1976. Reproduced with permission). The Bragg spacings  $d$  are defined as  $d_a$  = thickness of lipid bilayer  $d_w$  = thickness of water layer.

1975). The transformation of a crystallized emulsifier such as a monoglyceride into a liquid crystalline structure has been represented schematically by Krog and Lauridsen (1976) as shown in Figure 20. The major mesomorphic structures are lamellar, hexagonal and cubic. The lamellar structure (Figure 20b) is formed when the emulsifier is heated in the presence of water and alternating bimolecular layers of lipid are separated by layers of water. This structure when examined in the polarizing microscope appears as threadlike striated networks (Figure 21a) and is also known as the neat phase. In addition to polarized light microscopy, the mesomorphic phases can be characterized by their long spacings as determined by X-ray diffraction. The hexagonal phase consists of cylind-

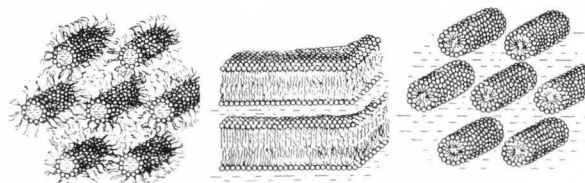


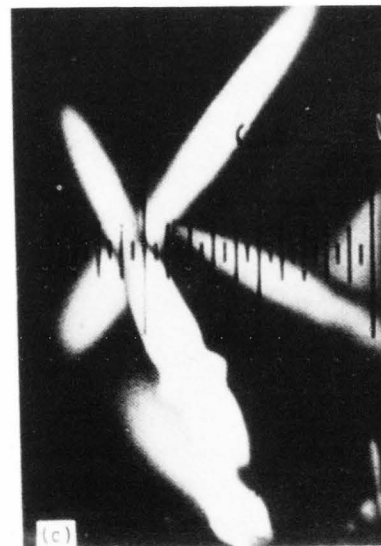
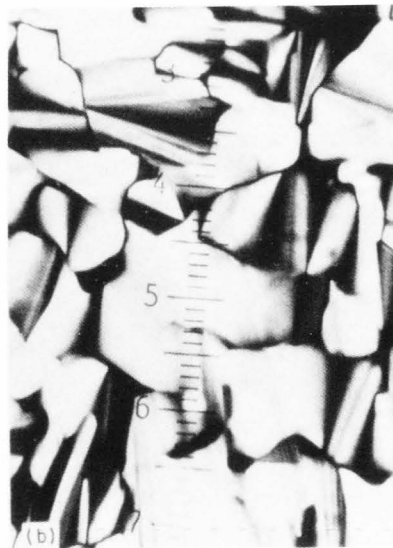
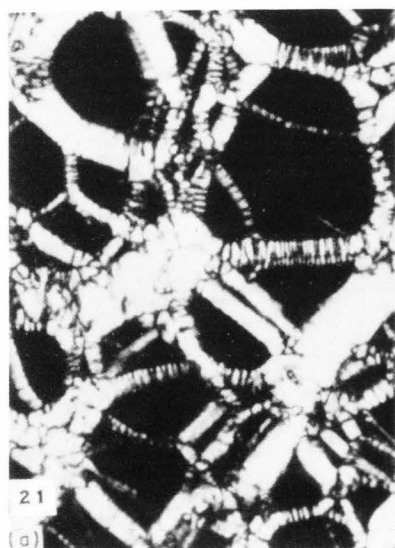
Fig. 22. Schematic representation of the structure of the lamellar liquid crystal (center) and of the hexagonal I (right) and hexagonal II (left) type. (Source: Larsson, 1976. Reproduced with permission).

rical structures of two types, hexagonal I with the lipophilic hydrocarbon chains occupying the interior core of the cylinders and hexagonal II where the hydrocarbon chains are arranged on the outside of the cylinders (Figure 22). The hexagonal phase when examined in the polarizing microscope presents a characteristic appearance (Figure 21b). Sometimes monoglycerides may form micellar aggregates which have an inner structure of the lamellar type and appear in polarized light as rod shaped "batonnets" (Figure 21c).

The layer structure of liquid crystal formations between flocculated emulsion droplets has been demonstrated by Friberg *et al.* (1976) by using the technique of freeze etching electron microscopy (Figure 23).

Liquid crystalline structures occur in food emulsions formulated with a

Fig. 21. Polarized light micrographs of lipid crystalline phases: (a) lamellar type, (b) hexagonal II type, and (c) batonnets. (Source: Krog and Lauridsen, 1976. Reproduced with permission).



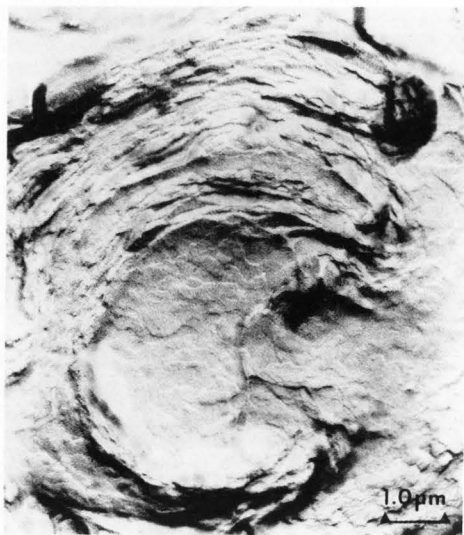


Fig. 23. Electron micrograph obtained by freeze etching of emulsion, demonstrating the layer structure of a liquid crystal between flocculated droplets. (Source: Friberg *et al.*, 1976. Reproduced with permission).

variety of emulsifiers including mono-glycerides, emulsifiers of the Span and Tween type and as shown by Hemker (1981) by tri- and octaglycerol esters. The latter discussed the relationship between the liquid crystalline structures and the functional properties of the emulsifiers in food emulsions.

Food processing often involves formation, destruction, or modification of emulsions, and various forms of microscopy may be used to elucidate the microstructure of the products. An example of the useful combination of scanning and transmission electron microscopy is the study of process cheese microstructure by Rayan *et al.* (1980). In this case, the protein matrix was visualized by SEM and the nature of the fat globules by TEM. In this way, valuable information about microstructural changes was obtained (Figure 24).

The examples presented in this paper are intended to demonstrate the usefulness of light and electron microscopy in the study of fat and emulsion microstructures, especially when used in conjunction with other techniques such as X-ray diffraction.

#### Acknowledgement

Financial support for this work was received from the Natural Sciences and

Engineering Research Council Canada and the Ontario Ministry of Agriculture and Food.

#### References

- Aleby S. Solid state behaviour of long chain esters. Abstracts of Göteborg Dissertations, Almquist & Wiksell, Stockholm, Sweden, Science 13, 1969.
- Buchheim W, Elektronenbeugungsuntersuchungen an Trilaurin-Kristallen, Kieler Milchwirtsch. Forsch. Ber. 22, 1970a, 3-61.
- Buchheim W, Die molekulare Ordnung in doppelbrechenden Fettkügelchen, Milchwissenschaft 25, 1970b, 223-227.
- Buchheim W, Precht D, Elektronenmikroskopische Untersuchung der Kristallisationsvorgänge in den Fettkügelchen während der Rahmreifung, Milchwissenschaft 34, 1979, 657-662.
- Chapman D, The structure of lipids by spectroscopic and X-ray techniques, John Wiley & Sons Inc., NY 1965, p. 52-132.
- Chapman G M, Akehurst E E, Wright W B, Cocoa butter and confectionery fats. Studies using programmed temperature X-ray diffraction and differential scanning calorimetry, J. Am. Oil Chemists' Soc. 48, 1971, 824-830.
- deJager E M, van den Tempel M, deBruyne P, Permeability of plastic disperse systems, Koninkl. Nederl. Akad. Wetenschap Proc. Ser. B., 66, 1963, 17-35.
- deRuig W G, Infrared spectra of diacid and triacid triglycerides, Appl. Spectroscopy, 31, 1977, 122-131.
- Friberg S, Emulsion stability. In 'Food Emulsions', Ed. Friberg S, Marcel Dekker Inc., New York 1976, p. 2.
- Friberg S, Jansson P O, Cederberg E, Surfactant association structure and emulsion stability, J. Coll. Interface Sci. 55, 1976, 614-623.
- Garti N, Wellner E, Sarig S, Effect of food emulsifiers on crystal structure and habit of stearic acid, J. Am. Oil Chemists' Soc. 58, 1981, 1058-1060.
- Garti N, Wellner E, Sarig S, Crystal structure modifications of tristearin by food emulsifiers, J. Am. Oil Chemists' Soc. 59, 1982, 181-185.

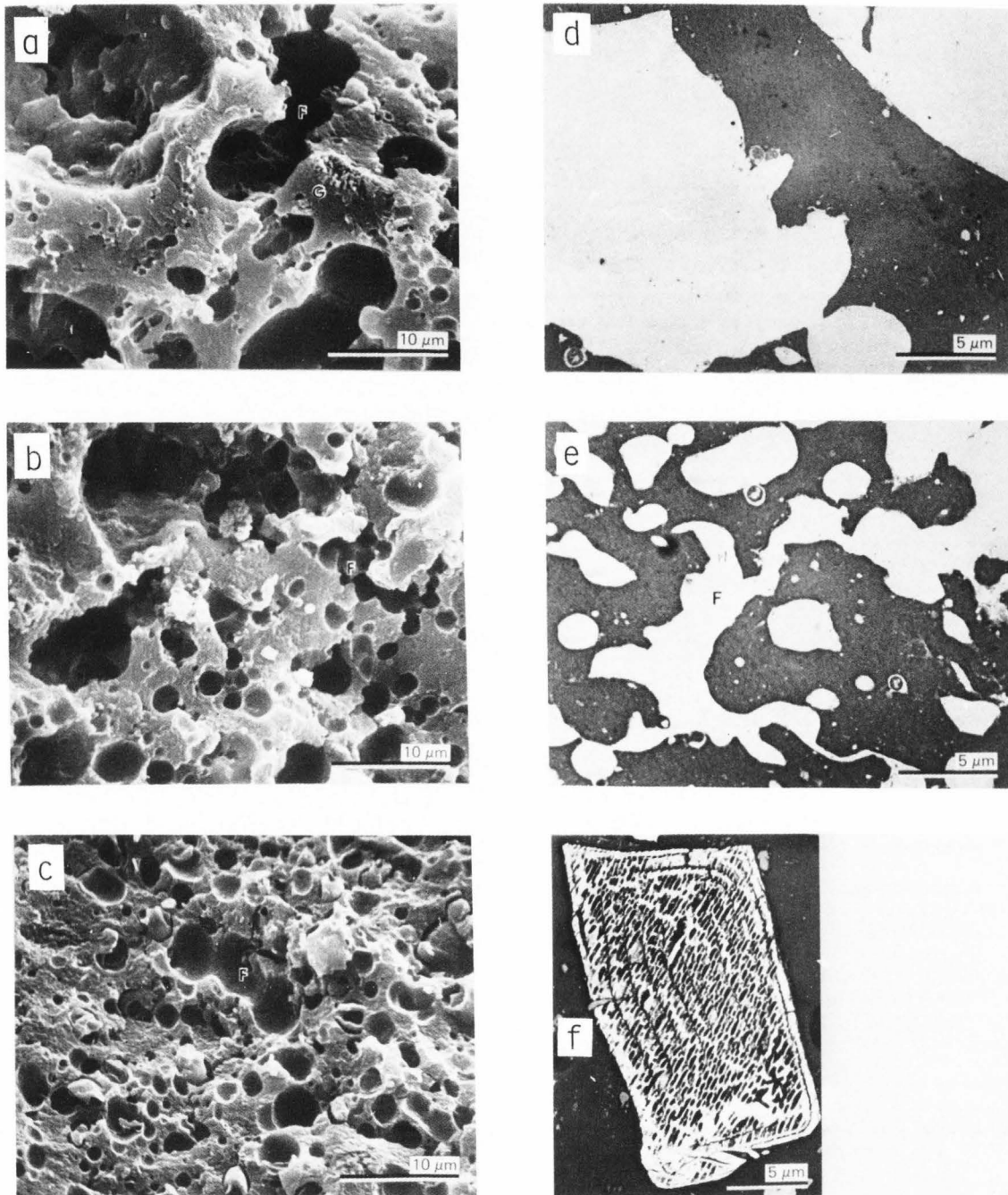


Fig. 24. Development of microstructure in process cheese in the presence of sodium aluminum phosphate (SALP). a = SEM at 0 time. Large fat particles (F) started to be degraded into smaller particles, (G) fragment of a calcium phosphate crystal. b = SEM after 10 min in the cooker. Fat is still in the form of large particles, many of which are being emulsified (F) into smaller particles. c = SEM after 40 min in the cooker. Some fat particles (F) are still

undergoing emulsification. d = TEM at 0 time. Dark areas are the cheese protein matrix, light areas indicate fat. e = TEM after 40 min in the cooker. The emulsification process has not been completed and fat particles (F) are still undergoing emulsification, f = TEM detail of one of the added SALP crystals found in abundance during the initial 10 min in the cooker. (Source: Rayan *et al.*, 1980. Reproduced with permission).

## Microscopy in the Study of Fats and Emulsions

- Graham D E, Phillips M C, The conformation of proteins at interfaces and their role in stabilizing emulsions. In 'Theory and Practice of Emulsion Technology', Ed. Smith A L, Academic Press, London 1974, p. 75-98.
- Hemker W, Associative structures of polyglycerol esters in food emulsions, J. Am. Oil Chemists' Soc. 58, 1981, 114-119.
- Hernqvist L, Herslof B, Larsson K, Podlaha O, Polymorphism of rapeseed oil with a low content of erucic acid and possibilities to stabilize the  $\beta'$ -crystal form in fats, J. Sci. Food Agric. 32, 1981, 1197-1202.
- Hoerr C W, Morphology of fats, oils and shortenings, J. Am. Oil Chemists' Soc. 37, 1960, 539-546.
- Knoop E, Schulz M E, Beitrag zur Kenntnis der Körnchenstruktur von Butterfett in Butter, Milchwissenschaft 15, 1960, 439-444.
- Krog N, Structures of emulsifier-water mesophases related to emulsion stability, Fette-Seifen-Anstrichm. 77, 1975, 267-271.
- Krog N, Lauridsen J B, Food emulsifiers and their associations with water. In 'Food Emulsions', Ed. Friberg S, Marcel Dekker Inc., New York 1976, p. 67-139.
- Larsson K, Solid state behaviour of glycerides, Arkiv Kemi 23, 1964, 35-55.
- Larsson K, Classification of crystal forms, Acta Chem. Scand. 20, 1966, 2255-2260.
- Larsson K, Molecular arrangement in glycerides, Fette-Seifen-Anstrichm. 74, 1972, 136-142.
- Larsson K, Crystal and liquid crystal structures of lipids. In 'Food Emulsions', Ed. Friberg S, Marcel Dekker, New York 1976, p. 39-66.
- Lutton E S, Review of the polymorphism of saturated even glycerides, J. Am. Oil Chemists' Soc. 27, 1950, 276-281.
- Lutton E S, Lipid structures, J. Am. Oil Chemists' Soc. 49, 1972, 1-9.
- Malkin T, Glyceride polymorphism. In 'Progress in the Chemistry of Fats and Other Lipids', Vol. II. Eds. Holman R T, Lundberg W O, Malkin T, Academic Press, NY 1954, p. 1-50.
- Mertens W G, deMan J M, The influence of temperature treatment on solid liquid ratios of fats determined by wide-line NMR, Can. Inst. Food Sci. Technol. J. 5, 1972, 77-81.
- Precht D, Buchheim W, Elektronenmikroskopische Untersuchungen über die physikalische Struktur von Streichfetten. I: Die Mikrostruktur der Fettkügelchen in Butter, Milchwissenschaft 34, 1979, 745-749.
- Precht D, Buchheim W, Elektronenmikroskopische Untersuchungen über die physikalische Struktur von Streichfetten. II: Die Mikrostruktur der zwischen-globularen Fettphase in Butter. Milchwissenschaft 35, 1980, 393-398.
- Precht D, Peter K H, Die Konsistenz der Butter. I. Elektronenmikroskopische Untersuchungen zum Einfluss unterschiedlicher Rahmreifung temperaturen auf die Häufigkeit bestimmter Fettkügelchentypen im Rahm. Milchwissenschaft 36, 1981, 616-620.
- Rayan A A, Kalab M, Ernstrom C A, Microstructure and rheology of process cheese, Scanning Electron Microsc. 1980; III; 635-643.
- Riiner U, Phase behaviour of hydrogenated fats. III. Phase equilibria and crystal sizes, Lebensm. Wiss. Technol. 4, 1971, 139-144.
- Vaughan J G, Ed. Food Microscopy, Academic Press, London, 1979.
- Walstra P, Influence of the state of dispersion of the fat on fat crystallization and on physical properties of fatty foods. In 'Lipids', Vol. 2, Technology, Raven Press, NY 1976, 411-418.
- Woodrow I L, deMan J M, Polymorphism in milkfat shown by X-ray diffraction and infrared spectroscopy, J. Dairy Sci. 51, 1968, 996-1000.

### Discussion with Reviewers

**W. Buchheim:** The electron micrographs of cream after different thermal treatments clearly show the great variation of fat crystallization and morphology in individual fat globules. This must not necessarily mean that the composition of the butterfat in the globules has to be different, although such evidence has been described by Walstra and Borggreve (Netherlands Milk Dairy J. 20, 140, 1966). The other reason could be that this great variation reflects differences in the degree of supercooling of individual globules due to the absence of crystal nuclei. Please comment.

**Author:** If in fact this phenomenon will be proven to exist (and not be an artifact of the preparation technique), I would find the latter explanation more plausible than the former.

W. Buchheim: It has been clearly demonstrated that the rheological behaviour of butter made from a given cream is dependent on how crystallized and liquid fat is spatially distributed within the final product. Please comment.

Author: I fully agree with this. However, we still have to explain how the amount of solid fat within a fat globule affects the texture. In butter, we have also fat crystals in the continuous liquid phase. Both types of solid particles are important in determining rheological properties.

D.N. Holcomb: Are the liquid crystal structures shown in Figure 22 consistent with rheological properties of these phases? In general, how important are liquid crystals in determining rheological properties of fat containing foods?

Author: The liquid crystal structures in bulk are definitely consistent with rheological properties. These structures are most important in emulsions and much of the research in this area has been related to emulsion stability.

D.N. Holcomb: Will the author give his opinions as to the future course of studies of the microstructure of fats and emulsions? Can we expect advances in our understanding of these systems through techniques such as low angle X-ray scattering, Fourier transform IR, etc.? Are there any staining techniques that might prove useful in lipid microscopy?

Author: I have tried to emphasize in my paper that this is an extremely difficult area of study. No single technique is adequate and various complimentary techniques should be used. The problem with much of microscopy is that it is not quantitative. More quantitative information is desirable. Low angle X-ray techniques are required for long spacings. Unfortunately, cameras such as the Guinier-Simon are not suitable for this. There is a possibility that suitable modifications to this equipment can be made. Differential staining, e.g. of solid and liquid fat, may be useful in certain cases.

N. Krog: Can you explain in more detail what the Guinier-Simon camera can do? Indicate advantages and limitations in using this camera against others.

Author: The Guinier-Simon camera can provide sharp diffraction patterns of fat samples being temperature programmed in as many as 8 steps over the range of -100 to 100 C. It is not suitable for low angle measurements.

N. Krog: Have you studied the influence of crystal modifiers like sorbitan tri-stearate on the recrystallization problems in Canola margarine?

Author: Yes, we are just concluding the first phase of our study. Sorbitan tri-stearate lowers the melting point, does not affect solid fat content and is effective in delaying the  $\beta'$  to  $\beta$  transition. It also seems to be present in higher concentration in the solid than in the liquid phase of the fat.

N. Krog: It is of interest to know if the fat globules represented in Figs. 11 and 12 have been exposed to different temperature treatment? Can the temperature vary during sample preparation and give cause to the difference between Figs. 11 and 12 rather than the proposed difference in fatty acid compositions?

Author: The possibility of artifacts is an ever present concern. It is more likely, however, that the state of dispersion of the fat influences the rate of crystallization.

N. Krog: Referring to Fig. 19, it would be of interest to know where the milk proteins are located in butter? Are all the proteins in the water droplets or are some of the proteins present on the surface of the fat globules in butter?

Author: Yes, butter contains a proportion of the original fat globules of the cream in an undisturbed condition. The protein membrane of these globules still contain a protein layer. Additional protein is present in the aqueous phase.

N. Krog: Have you done any work with phase contrast or fluorescence microscopy? Or can you give any reference to such studies in relation to food texture?

Author: No, we have not used phase contrast or fluorescence microscopy for work with fats. There appears to be no particular advantage for these techniques in the area of fats, and I know of no recent published work.

F.R. Paulicka: Please comment on the influence of mechanical working (shear, compression) on fat crystal morphology.

Author: The effect of mechanical working on fat rheology is well documented. However, to my knowledge, no body has been able to demonstrate what happens by using microscopy.