

Utah State University

DigitalCommons@USU

Library Faculty & Staff Presentations

Libraries

12-3-2013

Creating the Dublin Core Record

Liz Woolcott

Utah State University

Follow this and additional works at: https://digitalcommons.usu.edu/lib_present



Part of the [Library and Information Science Commons](#)

Recommended Citation

Woolcott, L. (2013). Creating the Dublin Core Record. Logan, Utah, December 3, 2013.

This Presentation is brought to you for free and open access by the Libraries at DigitalCommons@USU. It has been accepted for inclusion in Library Faculty & Staff Presentations by an authorized administrator of DigitalCommons@USU. For more information, please contact digitalcommons@usu.edu.





Creating a Dublin Core Record

Metadata Training
 December 2013
 Liz Woolcott



Creating a Dublin Core Record

Metadata Training
 December 2013
 Liz Woolcott

Let's use these two items to create records:

A



B



Dublin Core Overview

History

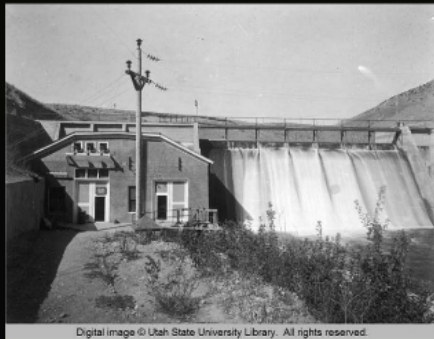
- Developed in the mid-1990's
- Named "Dublin Core" after:
 - Dublin, Ohio (where it was developed)
 - Focused on "Core" elements

Purpose

- Simplify metadata creation
- Make applicable across fields
- Allow for more metadata creation

Let's use these two items to create records:

A



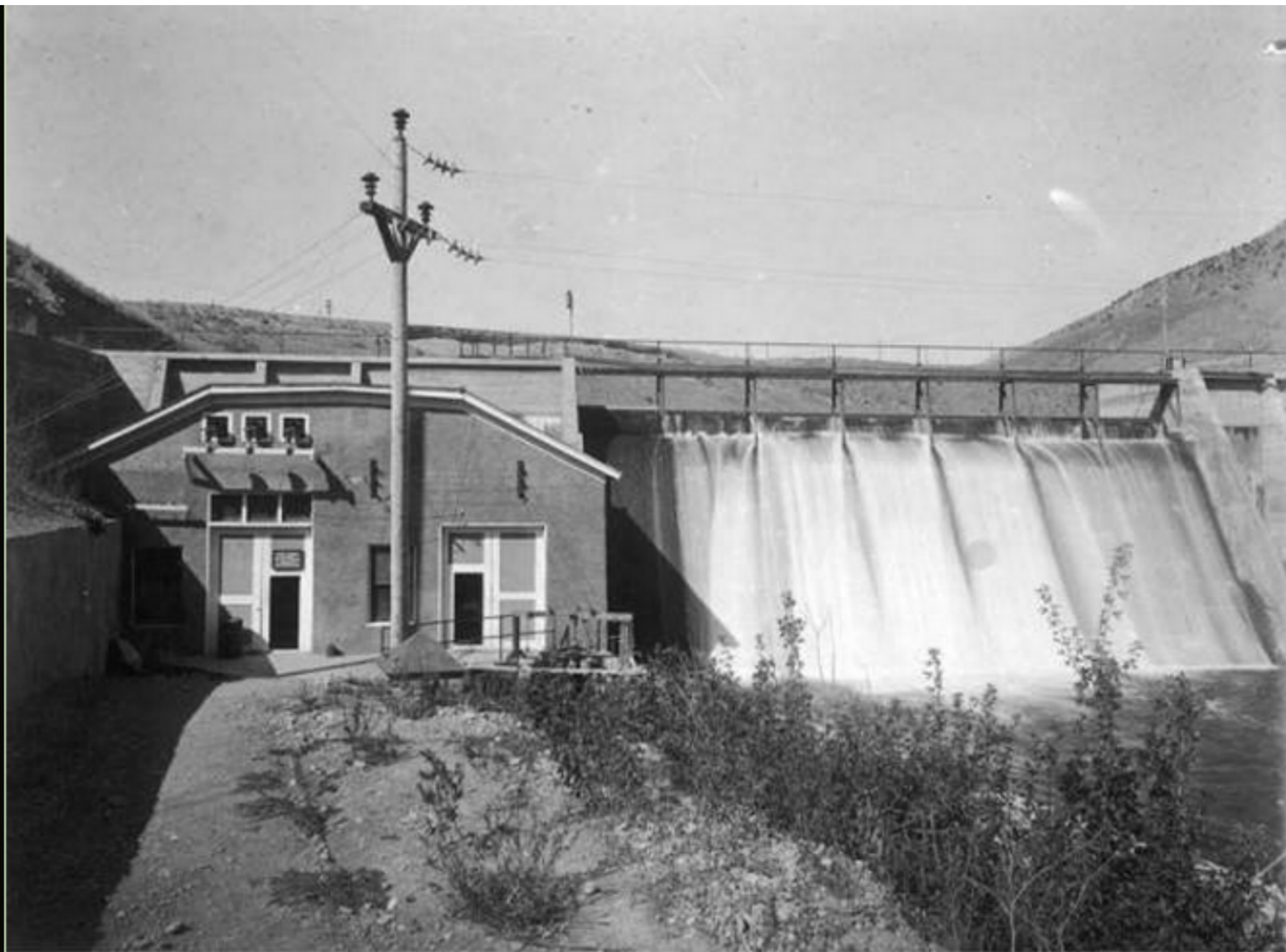
Digital image © Utah State University Library. All rights reserved.

<http://digital.lib.usu.edu/cdm/ref/collection/Bear/id/10508>

B



<http://digital.lib.usu.edu/cdm/ref/collection/Bear/id/2591>



Digital image © Utah State University Library. All rights reserved.

SUMMARY REPORT

Water & Related

Land Resources



Bear River Basin

cooperative study
1978

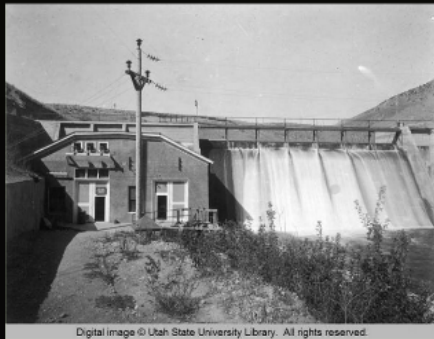
USDI
SPEC COLL.

333.91
EK38oc
v. 12

LIBRARY
COPY

Let's use these two items to create records:

A



Digital image © Utah State University Library. All rights reserved.

<http://digital.lib.usu.edu/cdm/ref/collection/Bear/id/10508>

B



<http://digital.lib.usu.edu/cdm/ref/collection/Bear/id/2591>

n: An account of the resource.

5:

First Dam State Power Plant on Logan River, 1920s.
Built in 1915 at a cost of \$100,000. The original is a black and white photograph (6 x 8 inches) mounted on board.

Summaries of reports prepared as the result of the cooperative study of the Bear River Basin in Utah, Idaho, and Wyoming in the mid-1970s. Describes the Bear River Basin and some of its problems in areas such as economics, recreation, irrigation, water management, flooding, erosion and sediment, environmental, and water quality. Looks at its economic development, its resources, and existing programs.

ment

erms:subject

of the resource.

nd vocabularies recommended:
brary of Congress Subject
eadings (LCSH)

t & Architecture Thesaurus (AAT)

u—Utah—Logan River—Pictorial works
Pictorial works

d (Utah-Idaho)—Statistics

d (Utah-Idaho)—Maps

r Watershed (Utah-Idaho)

erent

CoverageElement

Dublin Core Mapping: **dcterms:coverage**

Definition: The spatial or temporal topic of the resource.

Controlled vocabularies recommended:

- Getty Thesaurus for Geographic Names (TGN)
- Geonames.org
- Library of Congress Subject Headings (LCSH)

Examples:



Logan Canyon (Utah)
Logan River (Utah)
1915-1920

Content Description

These elements describe the content of the item you are creating metadata about. They include:

- Title
- Description
- Subject
- Coverage
- Source
- Type
- Relation

TypeElement

titleElement

descriptionElement

subjectElement

coverageElement

sourceElement

relationElement

Definition: A

Examples:



Alternative Title Element
Mapping: `dcterms:alternativeTitle`
Alternative name for a resource.

[none needed]

Summary Report: Water & Related Land Resources, Bear River Basin
Cooperative Study, 1978

Title Element

Dublin Core Mapping: `dcterms:title`

Definition: A name given to a resource

Often, you will need to supply this information

Examples:



First Dam State Power Plant on Logan River, 1920s



Summary Report Bear River Basin Cooperative Study

DescriptionElement

Dublin Core Mapping: **dcterms:description**

Definition: An account of the resource.

Examples:



First Dam State Power Plant on Logan River, 1920s. Built in 1913 at a cost of \$100,000. The original is a black and white photograph (6 x 8 inches) mounted on board.



Summarizes 22 reports prepared as the result of the cooperative study of the Bear River Basin in Utah, Idaho, and Wyoming in the mid-1970s. Describes the Bear River Basin and some of its problems in areas such as economics, recreation, irrigation water management, flooding, erosion and sediment, environmental, and water quality. Looks at its economic development, its resources, and existing programs. ...

ment

ms:abstract

re.

y the author or publisher

SubjectElement

Dublin Core Mapping: **dcterms:subject**

Definition: The topic of the resource.

Controlled vocabularies recommended:

- Library of Congress Subject Headings (LCSH)
- Art & Architecture Thesaurus (AAT)

Examples:



Hydroelectric power plants--Utah-- Logan River--Pictorial works
Dams--Utah--Logan River--Pictorial works



Bear River Watershed (Utah-Idaho)--Statistics
Bear River Watershed (Utah-Idaho)--Maps
Land use--Bear River Watershed (Utah-Idaho)



Logan River (Utah)
Logan Canyon (Utah)
Cedar Canyon (Utah)
Utah
United States



Bear River Watershed (Utah and Idaho)
Idaho
Utah
Wyoming
United States

CoverageElement

Dublin Core Mapping: **dcterms:coverage**

Definition: The spatial or temporal topic of the resource.

Controlled vocabularies recommended:

- Getty Thesaurus for Geographic Names (TGN)
- Geonames.org
- Library of Congress Subject Headings (LCSH)

Examples:



Logan Canyon (Utah)
Logan River (Utah)
1920-1929
20th century



Bear River Watershed (Utah and Idaho)
Idaho
Utah
1970-1979
20th century

SourceElement

Dublin Core Mapping: **dcterms:source**

Definition: A related resource from which the described item is derived.
Refers to the original physical object

Examples:



Utah State University, Merrill-Cazier Library, Special Collections and Archives, Historical Photoboard Collection A-0338



Utah State University, Merrill-Cazier Library, Special Collections and Archives, Books 333.91 B38ec v.12

or

Summary report: Bear River Basin cooperative study, water and land resources / prepared by United States Soil Conservation Service. Salt Lake City : Soil Conservation Service, 1978.

TypeElement

Dublin Core Mapping: **dcterms:type**

Definition: The nature or genre of the resource.

Must use the DCMI Type Vocabulary terms:
Collection, Dataset, Event, Image, InteractiveResource,
MovingImage, PhysicalObject, Service, Software, Sound,
StillImage, or Text.

Examples:



Image;StillImage;



Text

RelationElement

Dublin Core Mapping: **dcterms:relation**

Definition: A related resource.

Further refined in Qualified Dublin Core

Examples:



Utah State University, Merrill-Cazier Library, Historical Photoboards Collection



Bear River Watershed Historical Bibliography / compiled by Utah State University Library, Special Collections and Archives, 2005

IsFormatOfElement

Dublin Core Mapping: **dcterms:isFormatOf**

Definition: A related resource that is substantially identical to the described resource, but in another format.

IsReferencedByElement

Dublin Core Mapping: **dcterms:isReferencedBy**

Definition: A related resource that references, cites, or otherwise refers to the described resource.

ReferencesElement

Dublin Core Mapping: **dcterms:references**

Definition: A related resource that references, cites, or otherwise refers to the described resource.

HasVersionElement

Dublin Core Mapping: **dcterms:hasVersion**

Definition: A related resource that is a version, edition, or adaptation of the described resource.

IsVersionOfElement

Dublin Core Mapping: **dcterms:isVersionOf**

Definition: A related resource of which the described resource is a version, edition, or adaptation.

Changes in version imply substantive changes in content rather than differences in format.

IsReplacedByElement

Dublin Core Mapping: **dcterms:isReplacedBy**

Definition: A related resource that supplants, displaces, or supersedes the described resource.

HasPartElement

n: An account of the resource.

5:

First Dam State Power Plant on Logan River, 1920s.
Built in 1915 at a cost of \$100,000. The original is a black and white photograph (6 x 8 inches) mounted on board.

Summaries: 22 reports prepared as the result of the cooperative study of the Bear River Basin in Utah, Idaho, and Wyoming in the mid-1970s. Describes the Bear River Basin and some of its problems in areas such as economics, recreation, superior water management, flooding, erosion and sediment, environmental, and water quality. Looks at its economic development, its resources, and existing programs.

ment

erms:subject

of the resource.

nd vocabularies recommended:
brary of Congress Subject
eadings (LCSH)

t & Architecture Thesaurus (AAT)

u—Utah—Logan River—Pictorial works
Pictorial works

d (Utah-Idaho)—Statistics

d (Utah-Idaho)—Maps

r Watershed (Utah-Idaho)

erent

CoverageElement

Dublin Core Mapping: **dcterms:coverage**

Definition: The spatial or temporal topic of the resource.

Controlled vocabularies recommended:

- Getty Thesaurus for Geographic Names (TGN)
- Geonames.org
- Library of Congress Subject Headings (LCSH)

Examples:



Logan Canyon (Utah)
Logan River (Utah)
1915-1920

Content Description

These elements describe the content of the item you are creating metadata about. They include:

- Title
- Description
- Subject
- Coverage
- Source
- Type
- Relation

TypeElement

titleElement

descriptionElement

subjectElement

coverageElement

sourceElement

relationElement

Definition: A

Examples:



Intellectual Property

These elements discuss the ownership and rights relating to the intellectual property of the item you are creating metadata about. They include:

- Creator
- Contributor
- Publisher
- Rights

Con
Dublin C

Definition: An enti

Example



CreatorElement

Dublin Core Mapping: **dcterms:creator**

Definition: An entity primarily responsible for making the resource.

Controlled vocabularies recommended:

- Library of Congress Name Authority File (LCNAF)

Examples:



Ffoulkes, Annie, 1877-1962



United States. Dept. of Agriculture
United States. Soil Conservation Service
United States. Dept. of Agriculture. Economic Research Service
United States. Forest Service

ContributorElement

Dublin Core Mapping: **dcterms:contributor**

Definition: An entity responsible for making contributions to the resource.

Controlled vocabularies recommended:

- Library of Congress Name Authority File (LCNAF)

Examples:



Ffoulkes, Charles John, 1868-1947



United States. Dept. of Agriculture. Economic Research Service
United States. Forest Service

PublisherElement

Dublin Core Mapping: **dcterms:publisher**

Definition: An entity responsible for making the resource available.

Controlled vocabularies recommended:

- LoC Name Authority File (LCNAF)

Can use prefix for role clarity:

- Digitized by:
- Hosted by:
- Published by

Examples:



Digitized by : Merrill-Cazier Library



United States. Dept. of Agriculture

RightsElement

Dublin Core Mapping: **dcterms:rights**

Definition: Information about rights held in and over the resource.

Examples:



Reproduction for publication, exhibition, web display or commercial use is only permissible with the consent of the USU Libraries photograph curator, phone (435) 797-0890



This digitized document is a U.S. government publication and as such, may be used freely and without permission.

or

Public domain

Intellectual Property

These elements discuss the ownership and rights relating to the intellectual property of the item you are creating metadata about. They include:

- Creator
- Contributor
- Publisher
- Rights

Con
Dublin C

Definition: An enti

Example



Instantiation Elements

These elements discuss the traits of this one specific instance (a particular digital file, for example). These elements include:

- Date
- Format
- Identifier
- Language



Definition: Point

Example



FormatElement

Dublin Core Mapping: `dcterms:format`

Definition: The file format, physical medium, or dimensions

Controlled vocabulary
• Internet Me

Examples: <http://www.freeformatter.com/>

Examples of resources to which a Date Accepted may be relevant are a thesis (accepted by a university department) or an article (accepted by a journal).

DateCreatedElement

Dublin Core Mapping: `dcterms:dateCreated`

Definition: Date of creation of the resource. (Typically refers to intellectual content.)

Use the W3C Date Time profile of ISO 8601:
- YYYY
- YYYY-MM-DD
- YYYY, YYYY, YYYY, YYYY

DateElement

Dublin Core Mapping: `dcterms:date`

Definition: Point or period of time associated with an even in the lifecycle of the resource.

Use the W3C Date Time profile of ISO 8601

- YYYY
- YYYY-MM-DD
- YYYY; YYYY; YYYY; YYYY

Examples:



1920; 1921; 1922; 1923; 1924; 1925;
1926; 1927; 1928; 1929



1978-08-01

DateAcceptedElement

Dublin Core Mapping: `dcterms:dateAccepted`

Definition: Date of formal acceptance of the resource.

DateModifiedElement

Dublin Core Mapping: `dcterms:dateModified`

Definition: Date of which the resource was changed.

Use the W3C Date Time profile of ISO 8601:
- YYYY
- YYYY-MM-DD
- YYYY, YYYY, YYYY, YYYY

DateSubmittedElement

FormatElement

Dublin Core Mapping: **dcterms:format**

Definition: The file format, physical medium, or dimensions of the resource.

Controlled vocabularies recommended:

- Internet Media Type (IMT)

<http://www.freeformatter.com/mime-types-list.html>

Examples:



image/jpeg



image/jpeg

or

application/pdf

Ext

Dublin

Definition: The size

Ex

MediumElement

Dublin Core Mapping: dcterms:medi

Definition: The material or physical carrier of the r

refers to the phys

IdentifierElement

Dublin Core Mapping: **dcterms:identifier**

Definition: An unambiguous reference to the resource within a given context.

Ideally, should be a Uniform Resource Identifier (URI)
<http://www.ietf.org/rfc/rfc2396.txt>

Examples:



A0338.jpg

<http://digital.lib.usu.edu/cdm/ref/collection/Bear/id/10508>



33391B38ecv12.jpg

<http://digital.lib.usu.edu/cdm/ref/collection/Bear/id/2591>

LanguageElement

Dublin Core Mapping: **dcterms:language**

Definition: A language of the resource.

Controlled vocabularies recommended:

- ISO 639-3 (Three letter country codes)

Examples:



eng



eng

Instantiation Elements

These elements discuss the traits of this one specific instance (a particular digital file, for example). These elements include:

- Date
- Format
- Identifier
- Language



Definition: Point

Example



FormatElement

Dublin Core Mapping: `dcterms:fo`

Definition: The file format, physical medium, or dimensions

Controlled vocabulary
• Internet Me

Examples: <http://www.freeformatter.com/>

Ready to Rock 'N Roll?

Try creating records for these three items:

Mendon Social Band photograph:

• http://www.mendonutah.net/history/people/mendon_social_band.htm

Mary Emma Bird Diary:

• <http://uda-db.orbiscascade.org/findaid/ark:/80444/xv41799>

Chemistry of Cooking and Cleaning: A Manual for Housekeepers:

• <http://tahoe.lib.usu.edu/record=b1814799>

Definition: A subject record that links the description item to the original physical object.
Examples:
- Utah State Library, Special Collections and Archives, *Utah Pioneer*, 1850-1855
- Utah State Library, Special Collections and Archives, *Utah Pioneer*, 1850-1855

Qualified Dublin Core Elements

Includes:

- Simple Dublin Core
- New Elements
 - Accrual
 - Audience
 - Instructional Method
 - Provenance
 - Rights Holder
- Refinements of Existing Elements
 - Coverage
 - Date
 - Description
 - Format
 - Identifier
 - Relation
 - Rights
 - Title
 - Type

Accrual

Dublin Core Mapping

Definition: The policy governing the collection level.

Collection

Definition

AccrualMethodElement

Dublin Core Mapping: **dcterms:accrualMethod**

Definition: A set of methods by which items are add.
(Collection Level)

Controlled Vocabulary:

- Deposit
- Donation
- Purchase
- Loan
- License
- Item Creation

AccrualPeriodicityElement

Dublin Core Mapping: `dcterms:accrualPeriodicity`

Definition: The frequency with which items are added to a collection.
(Collection level.)

AccrualPolicyElement

Dublin Core Mapping: **dcterms:accrualPolicy**

Definition: The policy governing the addition of items to a collection.
(Collection level.)

Controlled vocabulary:

- Active
- Closed
- Partial
- Passive

AudienceElement

Dublin Core Mapping: **dcterms:audience**

Definition: A class of entity for whom the resource is intended.

Examples:

- K-12
- Undergraduates
- Dentists

Me

Dubl

Definition: A
for whom th

MediatorElement

Dublin Core Mapping: **dcterms:mediator**

Definition: An entity that mediates access to the resource and for whom the resource is intended or useful.

Examples:

- Parent
- Teacher
- Teaching Assistant

AudienceElement

Dublin Core Mapping: **dcterms:audience**

Definition: A class of entity for whom the resource is intended.

Examples:

- K-12
- Undergraduates
- Dentists

Me

Dubl

Definition: A
for whom th

InstructionalMethodElement

Dublin Core Mapping: `dcterms:instructionalMethod`

Definition: A process, used to engender knowledge, attitudes and skills, that the described resource is designed to support.

Example:

- Lectures
- Assignments
- Tutorials

ProvenanceElement

Dublin Core Mapping: **dcterms:provenance**

Definition: A statement of any changes in ownership and custody of the resource since its creation that are significant for its authenticity, integrity, and interpretation.

The statement may include a description of any changes successive custodians made to the resource.

RightsHolderElement

Dublin Core Mapping: **dcterms:rightsHolder**

Definition: A person or organization owning or managing rights over the resource.

Example:

Utah State University, Merrill-Cazier Library

Qualified Dublin Core Elements

Includes:

- Simple Dublin Core
- New Elements
 - Accrual
 - Audience
 - Instructional Method
 - Provenance
 - Rights Holder
- Refinements of Existing Elements
 - Coverage
 - Date
 - Description
 - Format
 - Identifier
 - Relation
 - Rights
 - Title
 - Type

Accrual

Dublin Core Mapping

Definition: The policy governing the collection level.

Con

Defini

Alternative Title Element
Mapping: `dcterms:alternativeTitle`
Alternative name for a resource.

[none needed]

Summary Report: Water & Related Land Resources, Bear River Basin
Cooperative Study, 1978

Title Element

Dublin Core Mapping: `dcterms:title`

Definition: A name given to a resource

Often, you will need to supply this information

Examples:



First Dam State Power Plant on Logan River, 1920s



Summary Report Bear River Basin Cooperative Study

AlternativeTitleElement

Dublin Core Mapping: **dcterms:alternativeTitle**

Definition: An alternative name for a resource.

Examples:



[none needed]



Summary Report: Water & Related Land Resources: Bear River Basin
Cooperative Study, 1978

DescriptionElement

Dublin Core Mapping: **dcterms:description**

Definition: An account of the resource.

Examples:



First Dam State Power Plant on Logan River, 1920s. Built in 1913 at a cost of \$100,000. The original is a black and white photograph (6 x 8 inches) mounted on board.



Summarizes 22 reports prepared as the result of the cooperative study of the Bear River Basin in Utah, Idaho, and Wyoming in the mid-1970s. Describes the Bear River Basin and some of its problems in areas such as economics, recreation, irrigation water management, flooding, erosion and sediment, environmental, and water quality. Looks at its economic development, its resources, and existing programs. ...

ment

ms:abstract

re.

y the author or publisher

AbstractElement

Dublin Core Mapping: **dcterms:abstract**

Definition: A summary of the resource.

This is usually supplied by the author or publisher

TableOfContentsElement

Dublin Core Mapping: `dcterms:tableOfContents`

Definition: A list of subunits of the resource.

Examples:



Logan River (Utah)
Logan Canyon (Utah)
Cahoon Canyon (Utah)
Utah
United States



Bear River Watershed (Utah and Idaho)
Idaho
Utah
Wyoming
United States

CoverageElement

Dublin Core Mapping: **dcterms:coverage**

Definition: The spatial or temporal topic of the resource.

Controlled vocabularies recommended:

- Getty Thesaurus for Geographic Names (TGN)
- Geonames.org
- Library of Congress Subject Headings (LCSH)

Examples:



Logan Canyon (Utah)
Logan River (Utah)
1920-1929
20th century



Bear River Watershed (Utah and Idaho)
Idaho
Utah
1970-1979
20th century

SpatialCoverageElement

Dublin Core Mapping: **dcterms:spatial**

Definition: Spatial characteristics of the resource.

Controlled vocabularies recommended:

- Getty Thesaurus for Geographic Names (TGN)
- Geonames.org
- Library of Congress Name Authority File (LCNAF)

Examples:



Logan River (Utah)
Logan Canyon (Utah)
Cache County (Utah)
Utah
United States



Bear River Watershed (Utah and Idaho)
Idaho
Utah
Wyoming
United States

TemporalCoverageElement

Dublin Core Mapping: `dcterms:temporal`

Definition: Temporal characteristics of the resource.

Examples:

Recommend a controlled vocabulary



1920-1929
20th century



1970-1979
20th century

RelationElement

Dublin Core Mapping: **dcterms:relation**

Definition: A related resource.

Further refined in Qualified Dublin Core

Examples:



Utah State University, Merrill-Cazier Library, Historical Photoboard Collection



Bear River Watershed Historical Bibliography / compiled by Utah State University Library, Special Collections and Archives, 2005

IsFormatOfElement

Dublin Core Mapping: **dcterms:isFormatOf**

Definition: A related resource that is substantially identical to the described resource, but in another format.

IsReferencedByElement

Dublin Core Mapping: **dcterms:isReferencedBy**

Definition: A related resource that references, cites, or otherwise refers to the described resource.

ReferencesElement

Dublin Core Mapping: **dcterms:references**

Definition: A related resource that references, cites, or otherwise refers to the described resource.

HasVersionElement

Dublin Core Mapping: **dcterms:hasVersion**

Definition: A related resource that is a version, edition, or adaptation of the described resource.

IsVersionOfElement

Dublin Core Mapping: **dcterms:isVersionOf**

Definition: A related resource of which the described resource is a version, edition, or adaptation.

Changes in version imply substantive changes in content rather than differences in format.

IsReplacedByElement

Dublin Core Mapping: **dcterms:isReplacedBy**

Definition: A related resource that supplants, displaces, or supersedes the described resource.

HasPartElement

ConformsToElement

Dublin Core Mapping: `dcterms:conformsTo`

Definition: An established standard to which the described resource conforms.

HasFormatElement

Dublin Core Mapping: `dcterms:hasFormat`

Definition: A related resource that is substantially the same as the pre-existing described resource, but in another format.

IsFormatOfElement

Dublin Core Mapping: `dcterms:isFormatOf`

Definition: A related resource that is substantially the same as the described resource, but in another format.

HasVersionElement

Dublin Core Mapping: **dcterms:hasVersion**

Definition: A related resource that is a version, edition, or adaptation of the described resource.

IsVersionOfElement

Dublin Core Mapping: **dcterms:isVersionOf**

Definition: A related resource of which the described resource is a version, edition, or adaptation.

Changes in version imply substantive changes in content rather than differences in format.

HasPartElement

Dublin Core Mapping: `dcterms:hasPart`

Definition: A related resource that is included either physically or logically in the described resource.

IsPartOfElement

Dublin Core Mapping: `dcterms:isPartOf`

Definition: A related resource in which the described resource is physically or logically included.

ReplacesElement

Dublin Core Mapping: `dcterms:replaces`

Definition: A related resource that is supplanted, displaced, or superseded by the described resource.

IsReplacedByElement

Dublin Core Mapping: `dcterms:isReplacedBy`

Definition: A related resource that supplants, displaces, or supersedes the described resource.

ReferencesElement

Dublin Core Mapping: `dcterms:references`

Definition: A related resource that is referenced, cited, or otherwise pointed to by the described resource.

IsReferencedByElement

Dublin Core Mapping: `dcterms:isReferencedBy`

Definition: A related resource that references, cites, or otherwise points to the described resource.

RequiresElement

Dublin Core Mapping: **dcterms:requires**

Definition: A related resource that is required by the described resource to support its function, delivery, or coherence.

IsRequiredByElement

Dublin Core Mapping: `dcterms:isRequiredBy`

Definition: A related resource that requires the described resource to support its function, delivery, or coherence.

RelationElement

Dublin Core Mapping: **dcterms:relation**

Definition: A related resource.

Further refined in Qualified Dublin Core

Examples:



Utah State University, Merrill-Cazier Library, Historical Photoboards Collection



Bear River Watershed Historical Bibliography / compiled by Utah State University Library, Special Collections and Archives, 2005

IsFormatOfElement

Dublin Core Mapping: **dcterms:isFormatOf**

Definition: A related resource that is substantially identical to the described resource, but in another format.

IsReferencedByElement

Dublin Core Mapping: **dcterms:isReferencedBy**

Definition: A related resource that references, cites, or otherwise refers to the described resource.

ReferencesElement

Dublin Core Mapping: **dcterms:references**

Definition: A related resource that references, cites, or otherwise refers to the described resource.

HasVersionElement

Dublin Core Mapping: **dcterms:hasVersion**

Definition: A related resource that is a version, edition, or adaptation of the described resource.

IsVersionOfElement

Dublin Core Mapping: **dcterms:isVersionOf**

Definition: A related resource of which the described resource is a version, edition, or adaptation.

Changes in version imply substantive changes in content rather than differences in format.

IsReplacedByElement

Dublin Core Mapping: **dcterms:isReplacedBy**

Definition: A related resource that supplants, displaces, or supersedes the described resource.

HasPartElement

RightsElement

Dublin Core Mapping: **dcterms:rights**

Definition: Information about rights held in and over the resource.

Examples:



Reproduction for publication, exhibition, web display or commercial use is only permissible with the consent of the USU Libraries photograph curator, phone (435) 797-0890



This digitized document is a U.S. government publication and as such, may be used freely and without permission.

or

Public domain

AccessRightsElement

Dublin Core Mapping: **dcterms:accessRights**

Definition: Information about who can access the resource or an indication of its security status.

Access Rights may include information regarding access or restrictions based on privacy, security, or other policies.

LicenseElement

Dublin Core Mapping: **dcterms:license**

Definition: A legal document giving official permission to do something with the resource.

Examples of resources to which a Date Accepted may be relevant are a thesis (accepted by a university department) or an article (accepted by a journal).

DateCreatedElement

Dublin Core Mapping: `dcterms:dateCreated`

Definition: Date of creation of the resource. (Typically refers to intellectual content.)

Use the W3C Date Time profile of ISO 8601:
- YYYY
- YYYY-MM-DD
- YYYY, YYYY, YYYY, YYYY

DateElement

Dublin Core Mapping: `dcterms:date`

Definition: Point or period of time associated with an even in the lifecycle of the resource.

Use the W3C Date Time profile of ISO 8601

- YYYY
- YYYY-MM-DD
- YYYY; YYYY; YYYY; YYYY

Examples:



1920; 1921; 1922; 1923; 1924; 1925;
1926; 1927; 1928; 1929



1978-08-01

DateAcceptedElement

Dublin Core Mapping: `dcterms:dateAccepted`

Definition: Date of formal acceptance of the resource.

DateModifiedElement

Dublin Core Mapping: `dcterms:dateModified`

Definition: Date of which the resource was changed.

Use the W3C Date Time profile of ISO 8601:
- YYYY
- YYYY-MM-DD
- YYYY, YYYY, YYYY, YYYY

DateSubmittedElement

DateAcceptedElement

Dublin Core Mapping: `dcterms:dateAccepted`

Definition: Date of acceptance of the resource.

Use the W3C Date Time profile of ISO 8601

- YYYY
- YYYY-MM-DD
- YYYY; YYYY; YYYY; YYYY

Examples of resources to which a Date Accepted may be relevant are a thesis (accepted by a university department) or an article (accepted by a journal).

DateAvailableElement

Dublin Core Mapping: **dcterms:dateAvailable**

Definition: Date (often a range) that resource became or will become available

Use the W3C Date Time profile of ISO 8601

- YYYY
- YYYY-MM-DD
- YYYY; YYYY; YYYY; YYYY

Typically used with publications,

DateCopyrightedElement

Dublin Core Mapping: **dcterms:X**

Definition: Date of copyright.

Use the W3C Date Time profile of ISO 8601

- YYYY
- YYYY-MM-DD
- YYYY; YYYY; YYYY; YYYY

DateCreatedElement

Dublin Core Mapping: `dcterms:dateCreated`

Definition: Date of creation of the resource. (Typically refers to intellectual content.)

Use the W3C Date Time profile of ISO 8601

- YYYY
- YYYY-MM-DD
- YYYY; YYYY; YYYY; YYYY

DateIssuedElement

Dublin Core Mapping: `dcterms:dateIssued`

Definition: Date of formal issuance of the resource.

Use the W3C Date Time profile of ISO 8601

- YYYY
- YYYY-MM-DD
- YYYY; YYYY; YYYY; YYYY

DateModifiedElement

Dublin Core Mapping: **dcterms:dateModified**

Definition: Date of which the resource was changed.

Use the W3C Date Time profile of ISO 8601

- YYYY
- YYYY-MM-DD
- YYYY; YYYY; YYYY; YYYY

DateSubmittedElement

Dublin Core Mapping: **dcterms:dateSubmitted**

Definition: Date of the submission of the resource.

Use the W3C Date Time profile of ISO 8601

- YYYY
- YYYY-MM-DD
- YYYY; YYYY; YYYY; YYYY

Example:

- Publications
- Theses
- Dissertations

DateValidElement

Dublin Core Mapping: `dcterms:dateValid`

Definition: Date (often a range) of validity of a resource.

Use the W3C Date Time profile of ISO 8601

- YYYY
- YYYY-MM-DD
- YYYY; YYYY; YYYY; YYYY

Example:

- Publications

Examples of resources to which a Date Accepted may be relevant are a thesis (accepted by a university department) or an article (accepted by a journal).

DateCreatedElement

Dublin Core Mapping: `dcterms:dateCreated`

Definition: Date of creation of the resource. (Typically refers to intellectual content.)

Use the W3C Date Time profile of ISO 8601
- YYYY
- YYYY-MM-DD
- YYYY, YYYY, YYYY, YYYY

DateElement

Dublin Core Mapping: `dcterms:date`

Definition: Point or period of time associated with an even in the lifecycle of the resource.

Use the W3C Date Time profile of ISO 8601

- YYYY
- YYYY-MM-DD
- YYYY; YYYY; YYYY; YYYY

Examples:



1920; 1921; 1922; 1923; 1924; 1925;
1926; 1927; 1928; 1929



1978-08-01

DateElement

Dublin Core Mapping: `dcterms:date`

Definition: Date of formation of the resource.

DateModifiedElement

Dublin Core Mapping: `dcterms:dateModified`

Definition: Date of which the resource was changed.

Use the W3C Date Time profile of ISO 8601
- YYYY
- YYYY-MM-DD
- YYYY, YYYY, YYYY, YYYY

DateSubmittedElement

FormatElement

Dublin Core Mapping: **dcterms:format**

Definition: The file format, physical medium, or dimensions of the resource.

Controlled vocabularies recommended:

- Internet Media Type (IMT)

<http://www.freeformatter.com/mime-types-list.html>

Examples:



image/jpeg



image/jpeg

or

application/pdf

Ext

Dublin

Definition: The size

Ex

MediumElement

Dublin Core Mapping: dcterms:medi

Definition: The material or physical carrier of the r

refers to the phys

ExtentElement

Dublin Core Mapping: `dcterms:extent`

Definition: The size or duration of a resource.

Examples:

- 5,234,000 bytes
- 6 minutes

MediumElement

Dublin Core Mapping: `dcterms:medium`

Definition: The material or physical carrier of the resource.

Refers to the physical object.

IdentifierElement

Dublin Core Mapping: **dcterms:identifier**

Definition: An unambiguous reference to the resource within a given context.

Ideally, should be a Uniform Resource Identifier (URI)
<http://www.ietf.org/rfc/rfc2396.txt>

Examples:



A0338.jpg

<http://digital.lib.usu.edu/cdm/ref/collection/Bear/id/10508>



33391B38ecv12.jpg

<http://digital.lib.usu.edu/cdm/ref/collection/Bear/id/2591>

BibliographicCitationElement

Dublin Core Mapping: `dcterms:bibliographicCitation`

Definition: A bibliographic reference for the resource.

Recommended practice is to include sufficient bibliographic detail to identify the resource as unambiguously as possible.

Ready to Rock 'N Roll?

Try creating records for these three items:

Mendon Social Band photograph:

• http://www.mendonutah.net/history/people/mendon_social_band.htm

Mary Emma Bird Diary:

• <http://uda-db.orbiscascade.org/findaid/ark:/80444/xv41799>

Chemistry of Cooking and Cleaning: A Manual for Housekeepers:

• <http://tahoe.lib.usu.edu/record=b1814799>

Definition: A subject record that links the description item to the original physical object.
Examples:
- Utah State Library, Special Collections and Archives, *Utah Pioneer*, 1850-1860
- Utah State Library, Special Collections and Archives, *Utah Pioneer*, 1850-1860



Creating a Dublin Core Record

data Training
 umber 2013
 /oolcott