

# Improving Utah's Water Quality

## Middle Bear River Watershed



UtahStateUniversity  
WATER QUALITY EXTENSION

Revised November 2012

### MAJOR WATERBODIES

Bear River  
Cutler Reservoir  
Logan River  
Blacksmith Fork River  
Little Bear River

### MAJOR CITIES

Logan  
Hyrum  
Providence  
Wellsville

### MAJOR LAND USES

Urban  
Agriculture  
Recreation

### LOCAL WATER QUALITY ISSUES

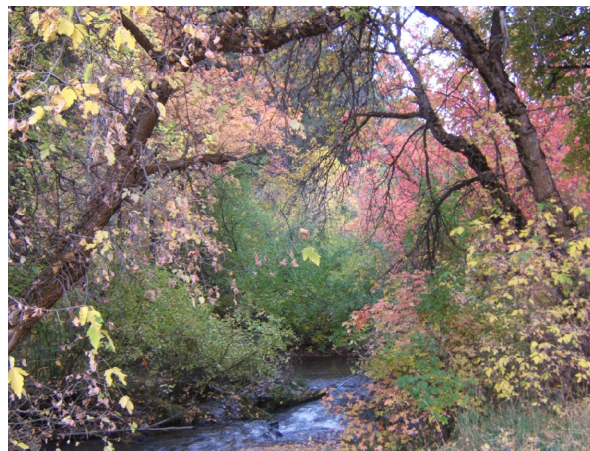
Phosphorus  
Sediment  
Bank Erosion  
Loss of Riparian Vegetation and Aquatic Habitat  
Animal Feeding Operations

### LOCAL CONTACT:

Middle Bear River Watershed  
Coordinator  
(435) 753-6029 ext. 21

### Watershed Description:

The Middle Bear River watershed includes all of the waterways within the Cache Valley, starting from the Idaho-Utah border and extending to the south boundary of Cache County.



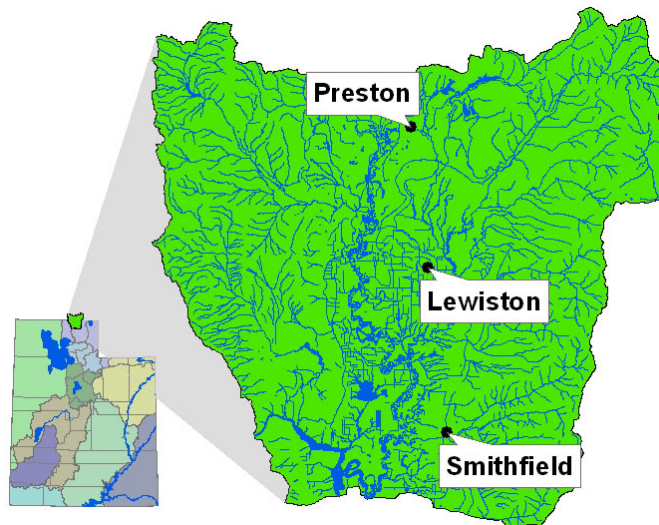
The Middle Bear River watershed encompasses the drainage areas of several major tributaries of the Bear River, which flow from the east into the shallow waters of Cutler Reservoir.

The Middle Bear River watershed has a drainage area of 888 square miles. The annual average flow into the Bear River increases from 1,095 cubic feet per second

to 1,519 cubic feet per second as it enters Cutler Reservoir. The Logan, Blacksmith Fork, and Little Bear rivers are primarily responsible for this increase as all three converge and enter the reservoir.

Cache County's population is approximately 100,000. Cache Valley is expected to see the highest rate of growth of all municipal areas in the Bear River Basin. With increased

population, large emphasis has been placed on wastewater treatment and storm-water management.



# Middle Bear River Water Quality Improvement

## Project Description:

Water Quality implementation projects have been occurring in the Middle Bear River watershed since the early 1990s with great success. With the cooperation of local watershed groups, landowners, and various governmental agencies, several water quality projects have been implemented ranging from stream bank restoration to sprinkler irrigation systems. Several educational campaigns have also been initiated to help raise public awareness of water quality issues throughout the valley. These education campaigns include youth educational field days, storm water education, and pharmaceutical disposal programs.

The Middle Bear River watershed has a large number of dairy producers. Recently, efforts have helped many producers comply with state water quality standards. Various agencies have helped dairy producers implement best management practices to help contain water rich in nutrients and organic matter on their property. Many producers have also developed nutrient management plans. These plans identify when and where to apply manure. Containment practices and nutrient management plans help prevent excess nutrients from entering local water bodies.



Feedlot abandonment and restoration.



Streambank restoration.

## Partners

North Cache Conservation District  
Blacksmith Fork Conservation District  
EPA  
Utah Division of Water Quality  
Utah Division of Wildlife Resources  
Natural Resources Conservation Service  
Utah Association of Conservation Districts  
Local Landowners  
Local Irrigation Companies  
Utah Watershed Coordinating Council  
Cutler Reservoir Advisory Committee  
Utah State University Extension

## Related Projects

Irrigation systems  
Range and pasture planning  
Soil testing and training  
Bear River Celebration & Free Fishing Day  
4<sup>th</sup> grade Natural Resources Field Days  
Stream restoration  
Animal feeding operation inventory  
Animal feeding operation improvements  
Wildlife habitat improvements  
Upland improvements  
Water quality outreach and education

## Funding

EPA 319 funding  
Utah State Nonpoint source funds  
NRCS Environmental Quality Incentive Program (EQIP)  
NRCS Wildlife Habitat Improvement Program (WHIP)  
Local Landowners

*To learn how you can participate or lend your support to Utah community water quality projects, please contact your local conservation district or county agent.*

Produced by USU Water Quality Extension, Utah Watershed Coordinating Council, Utah Association of Conservation Districts, and Utah Division of Water Quality.

Utah State University is committed to providing an environment free from harassment and other forms of illegal discrimination based on race, color, religion, sex, national origin, age (40 and older), disability, and veteran's status. USU's policy also prohibits discrimination on the basis of sexual orientation in employment and academic related practices and decisions. Utah State University employees and students cannot, because of race, color, religion, sex, national origin, age, disability, or veteran's status, refuse to hire; discharge; promote; demote; terminate; discriminate in compensation; or discriminate regarding terms, privileges, or conditions of employment, against any person otherwise qualified. Employees and students also cannot discriminate in the classroom, residence halls, or in on/off campus, USU-sponsored events and activities. This publication is issued in furtherance of Cooperative Extension work, acts of May 8 and June 30, 1914, in cooperation with the U.S. Department of Agriculture, Noelle E. Cockett, Vice President for Extension and Agriculture, Utah State University.