

Utah State University

DigitalCommons@USU

---

Fact Sheets

Publications

---

2009

## Hart Mountain Gray Butte and Rock Creek Sites Quick Facts

SageSTEP

Follow this and additional works at: [https://digitalcommons.usu.edu/sagestep\\_factsheets](https://digitalcommons.usu.edu/sagestep_factsheets)



Part of the [Life Sciences Commons](#)

---

### Recommended Citation

SageSTEP, "Hart Mountain Gray Butte and Rock Creek Sites Quick Facts" (2009). *Fact Sheets*. 7.  
[https://digitalcommons.usu.edu/sagestep\\_factsheets/7](https://digitalcommons.usu.edu/sagestep_factsheets/7)

This Book is brought to you for free and open access by the Publications at DigitalCommons@USU. It has been accepted for inclusion in Fact Sheets by an authorized administrator of DigitalCommons@USU. For more information, please contact [digitalcommons@usu.edu](mailto:digitalcommons@usu.edu).



# SageSTEP

## Sagebrush Steppe Treatment Evaluation Project

SageSTEP is an interdisciplinary, long-term research program evaluating ways to improve the health of sagebrush rangelands across the Great Basin. The purpose of SageSTEP is to conduct research and provide improved information about restoring sagebrush rangelands degraded by conifer encroachment or exotic grassland invasion. This information will help resource managers make restoration management decisions with reduced risk and uncertainty. The project is a collaborative effort among researchers and land managers in a variety of disciplines from five universities, six federal agencies and one non-profit organization in six states in the Great Basin.

Treatment options—including prescribed fire, mechanical thinning of shrubs and trees, and herbicide applications—are being evaluated to learn how to create healthy and diverse plant communities that will be more resilient to fire and resistant to weed invasion. All treatments were implemented in the same year at each site in the fall of 2006, 2007, or 2008. Baseline data were collected at all sites prior to treatment, and post-treatment data have been collected each subsequent year through 2009. Less frequent, longer-term monitoring will help researchers more fully understand treatment impacts.



### Multidisciplinary Data Collection

**Vegetation and Fuels:** 10-, 100-, and 1000-hour fuel samples, along with other vegetation and fuel measurements are collected in both the understory and overstory. Vegetation measurements will allow scientists to learn more about the plant community responds to prescribed fire and other management treatments.

**Soils:** Soils are sampled for chemical analyses and soil profile descriptions to tell scientists more about the effects of treatments on the availability of essential plant nutrients and to help explain vegetation response.

**Hydrology:** Rainfall simulations are conducted on small (0.5m<sup>2</sup>) and large (35m<sup>2</sup>) plots, and measurements are taken to help scientists better understand relationships between changes in vegetation and ground cover and runoff and erosion.

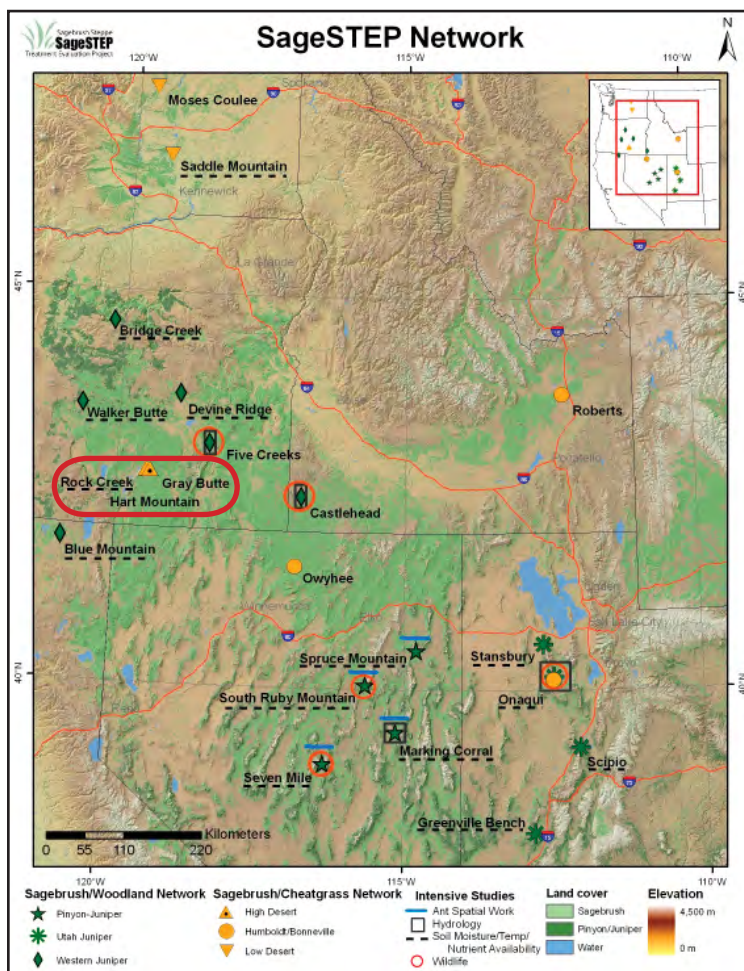
**Wildlife:** Wildlife data collection focuses on the effects of treatments on migratory songbirds.

**Insects:** Butterflies are surveyed for biodiversity, and ants are studied for their importance in seed dispersal and predation in sagebrush-steppe systems.

**Additional Data:** Yearly standard photographs are taken, and multiple soil moisture sensors, and a climate station are present at each site.

**Economics:** Environmental valuation study will identify and measure changes in environmental benefits (such as recreation and ranching) resulting from ecosystem changes caused by treatments.

**Sociopolitical:** Studies focus on understanding the social acceptability of management practices as well as factors that influence managers' willingness to use them.





## Hart Mountain Gray Butte and Rock Creek Sites Quick Facts

**Location:** Lake County, near Lakeview (~70 miles), Frenchglen (~45 miles), and Plush, OR (~20 miles)

**Elevation:** 4910 ft. (Gray Butte) 4950 ft. (Rock Creek)

**Land Management Agency:** U.S. Fish and Wildlife Service, Hart Mountain National Antelope Refuge

**Plots:** Four 200-acre plots at each site (Control, Burn, Mechanical, and Herbicide)

**Topography:** 0–3 % slope with a general aspect of 200 degrees for entire study area

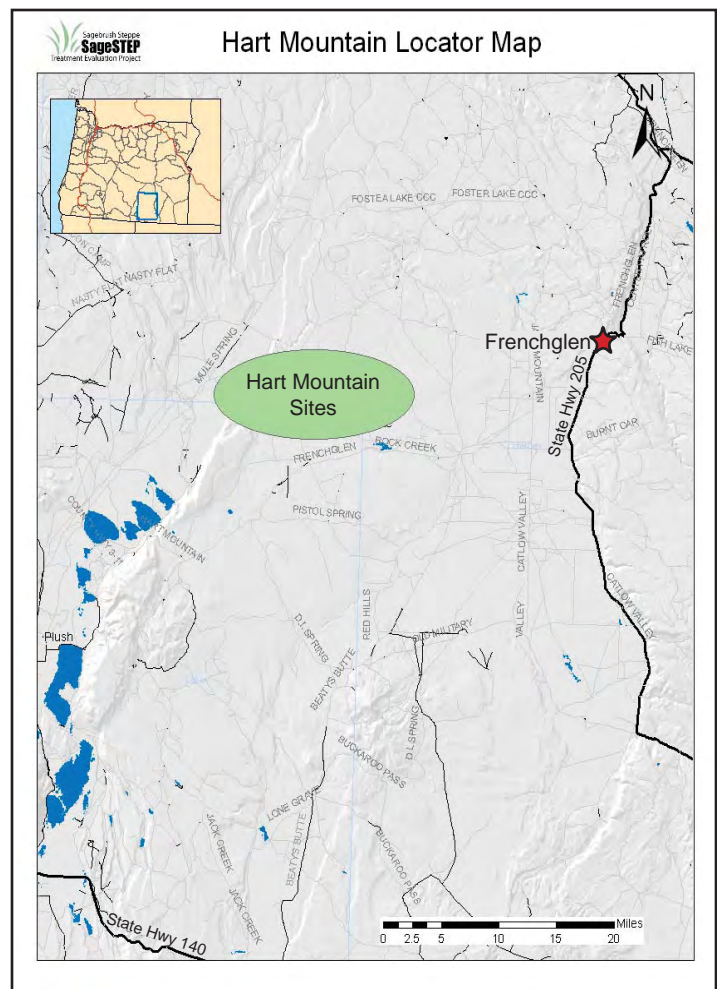
**Common Vegetation:** Wyoming big sagebrush, bluebunch wheatgrass, squirreltail, Sandberg bluegrass, Indian rice grass, Therber's needlegrass, and a varying extent of cheatgrass invasion

**Representative Land Base:** Vast acreages in the High Desert of Eastern Oregon

**Soils:** Brace-Raz complex

**Fire Regime:** The Wyoming big sagebrush type is the driest of the sagebrush steppe communities. Historical fire return interval was approximately 50-100 years. Introduction of cheatgrass into sagebrush grassland communities has increased fine fuels and reduced the fire return interval to less than 10 years.

**Grazing:** Grazing does not occur on these sites.



## Land Management Treatments

These sites are part of the study of cheatgrass invasion of sagebrush communities. The primary objective is to find out how much native bunchgrasses need to be present at the time of treatment in order for managers to improve land health without having to conduct expensive re-seeding. Treatments were implemented at Rock Creek in 2007 and Gray Butte in 2008.

- Prescribed burn
- Mowing: sagebrush mow height of ~12-15" throughout plot
- Tebuthiuron Herbicide: aerial application for ~50% sagebrush mortality.
- Control plot will remain untreated

Plateau pre-emergent herbicide treatment is crossed with the four main treatments on half of the site's subplots to control cheatgrass.



**Questions about this site?** Contact outreach coordinator Lael Gilbert at [lael.gilbert@usu.edu](mailto:lael.gilbert@usu.edu) or site manager Scott Shaff at [sshaff@usgs.gov](mailto:sshaff@usgs.gov).

[www.sagestep.org](http://www.sagestep.org)

Sagebrush Steppe  
**SageSTEP**  
Treatment Evaluation Project