

Utah State University

DigitalCommons@USU

---

Fact Sheets

Publications

---

2009

## Roberts Site Quick Facts

SageSTEP

Follow this and additional works at: [https://digitalcommons.usu.edu/sagestep\\_factsheets](https://digitalcommons.usu.edu/sagestep_factsheets)



Part of the [Life Sciences Commons](#)

---

### Recommended Citation

SageSTEP, "Roberts Site Quick Facts" (2009). *Fact Sheets*. 12.  
[https://digitalcommons.usu.edu/sagestep\\_factsheets/12](https://digitalcommons.usu.edu/sagestep_factsheets/12)

This Book is brought to you for free and open access by the Publications at DigitalCommons@USU. It has been accepted for inclusion in Fact Sheets by an authorized administrator of DigitalCommons@USU. For more information, please contact [digitalcommons@usu.edu](mailto:digitalcommons@usu.edu).



# SageSTEP

## Sagebrush Steppe Treatment Evaluation Project

SageSTEP is an interdisciplinary, long-term research program evaluating ways to improve the health of sagebrush rangelands across the Great Basin. The purpose of SageSTEP is to conduct research and provide improved information about restoring sagebrush rangelands degraded by conifer encroachment or exotic grassland invasion. This information will help resource managers make restoration management decisions with reduced risk and uncertainty. The project is a collaborative effort among researchers and land managers in a variety of disciplines from five universities, six federal agencies and one non-profit organization in six states in the Great Basin.

Treatment options—including prescribed fire, mechanical thinning of shrubs and trees, and herbicide applications—are being evaluated to learn how to create healthy and diverse plant communities that will be more resilient to fire and resistant to weed invasion. All treatments were implemented in the same year at each site in the fall of 2006, 2007, or 2008. Baseline data were collected at all sites prior to treatment, and post-treatment data have been collected each subsequent year through 2009. Less frequent, longer-term monitoring will help researchers more fully understand treatment impacts.



### Multidisciplinary Data Collection

**Vegetation and Fuels:** 10-, 100-, and 1000-hour fuel samples, along with other vegetation and fuel measurements are collected in both the understory and overstory. Vegetation measurements will allow scientists to learn more about the plant community responds to prescribed fire and other management treatments.

**Soils:** Soils are sampled for chemical analyses and soil profile descriptions to tell scientists more about the effects of treatments on the availability of essential plant nutrients and to help explain vegetation response.

**Hydrology:** Rainfall simulations are conducted on small (0.5m<sup>2</sup>) and large (35m<sup>2</sup>) plots, and measurements are taken to help scientists better understand relationships between changes in vegetation and ground cover and runoff and erosion.

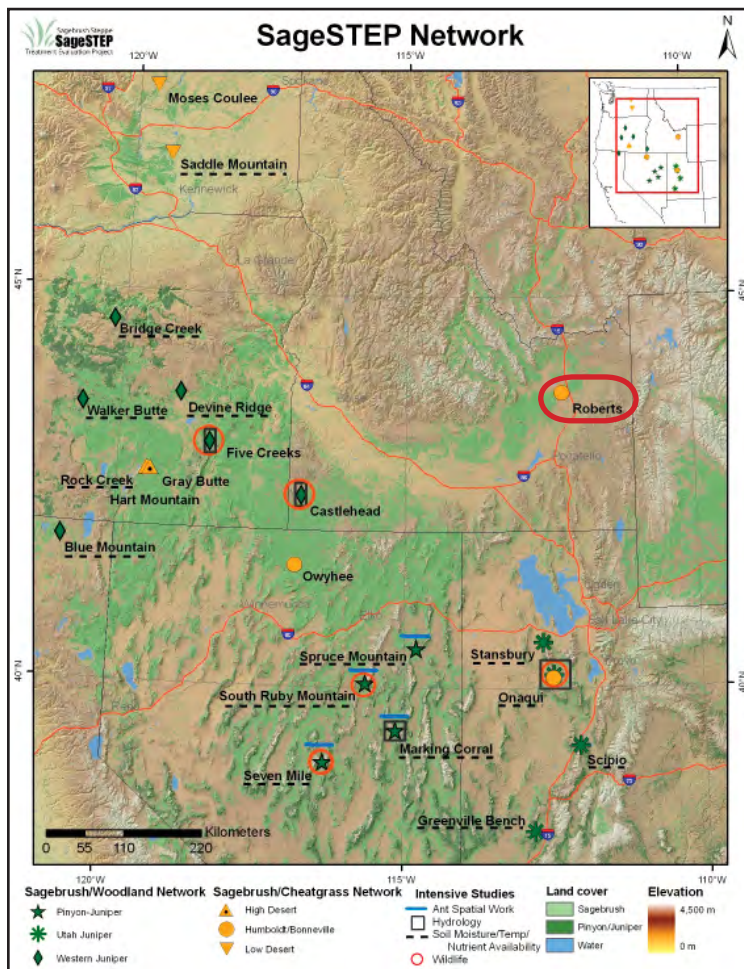
**Wildlife:** Wildlife data collection focuses on the effects of treatments on migratory songbirds.

**Insects:** Butterflies are surveyed for biodiversity, and ants are studied for their importance in seed dispersal and predation in sagebrush-steppe systems.

**Additional Data:** Yearly standard photographs are taken, and multiple soil moisture sensors, and a climate station are present at each site.

**Economics:** Environmental valuation study will identify and measure changes in environmental benefits (such as recreation and ranching) resulting from ecosystem changes caused by treatments.

**Sociopolitical:** Studies focus on understanding the social acceptability of management practices as well as factors that influence managers' willingness to use them.





## Roberts Site Quick Facts

**Location:** Jefferson County, northwest of Rogers, ID

**Land Management Agency:** Bureau of Land Management Upper Snake River Field Office

**Plots:** Four 200-acre core plots (Control, Burn, Mechanical, Herbicide)

**Elevation:** 4800-4860 ft

**Topography:** 0-10% slopes of all aspects

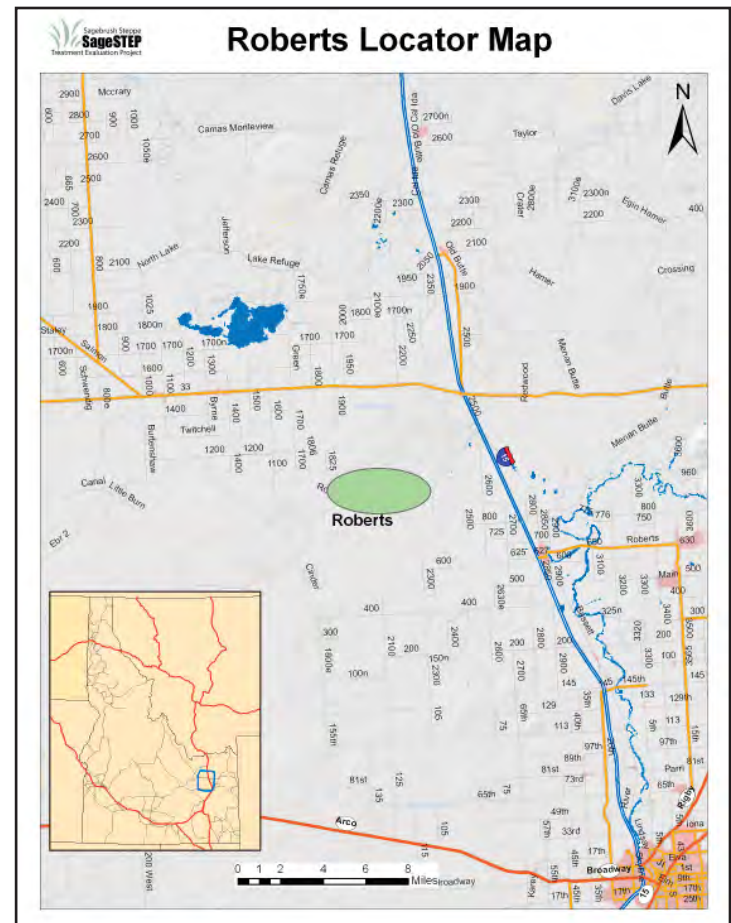
**Common Vegetation:** Wyoming big sagebrush, Sandberg bluegrass, Indian ricegrass, bluebunch wheatgrass, and cheatgrass

**Soils:** Fine- to coarse-loamy, mixed

**Fire Regime:** Historically, several decades. Many of these communities experienced an increased fire return interval with settlement and overgrazing. Cheatgrass invasion can cause larger fires and reduce this interval to 10 years or less.

**Representative Land Base:** Several million acres in western and central Utah, southern Idaho, northern Nevada, and eastern Oregon

**Grazing:** Plots are located on an active grazing allotment, and will be fenced for the duration of the study to exclude livestock.



## Land Management Treatments

This site is part of the study of cheatgrass invasion of sagebrush communities. The primary objective is to find out how much native bunchgrasses need to be present at the time of treatment in order for managers to improve land health without having to conduct expensive re-seeding. Treatments were implemented at this site in fall 2007.

- Prescribed burn was extremely patchy.
- Mowing: sagebrush mow height of ~12-15" throughout plot
- Tebuthiuron (Spike 20P) Herbicide Application: aerial application of pellets at ~1.5lbs/acre
- Control plot: untreated.

Plateau pre-emergent herbicide treatment was crossed with the four main treatments on half of the site's subplots to achieve cheatgrass control.



## Questions about this site?

Contact outreach coordinator Lael Gilbert at [lael.gilbert@usu.edu](mailto:lael.gilbert@usu.edu) or site manager Maggie Gray at [maggie.gray@usu.edu](mailto:maggie.gray@usu.edu).