

Utah State University

DigitalCommons@USU

inSites

Landscape Architecture and Environmental
Planning

1995

InSites, 1995

Utah State University

Follow this and additional works at: <https://digitalcommons.usu.edu/insites>



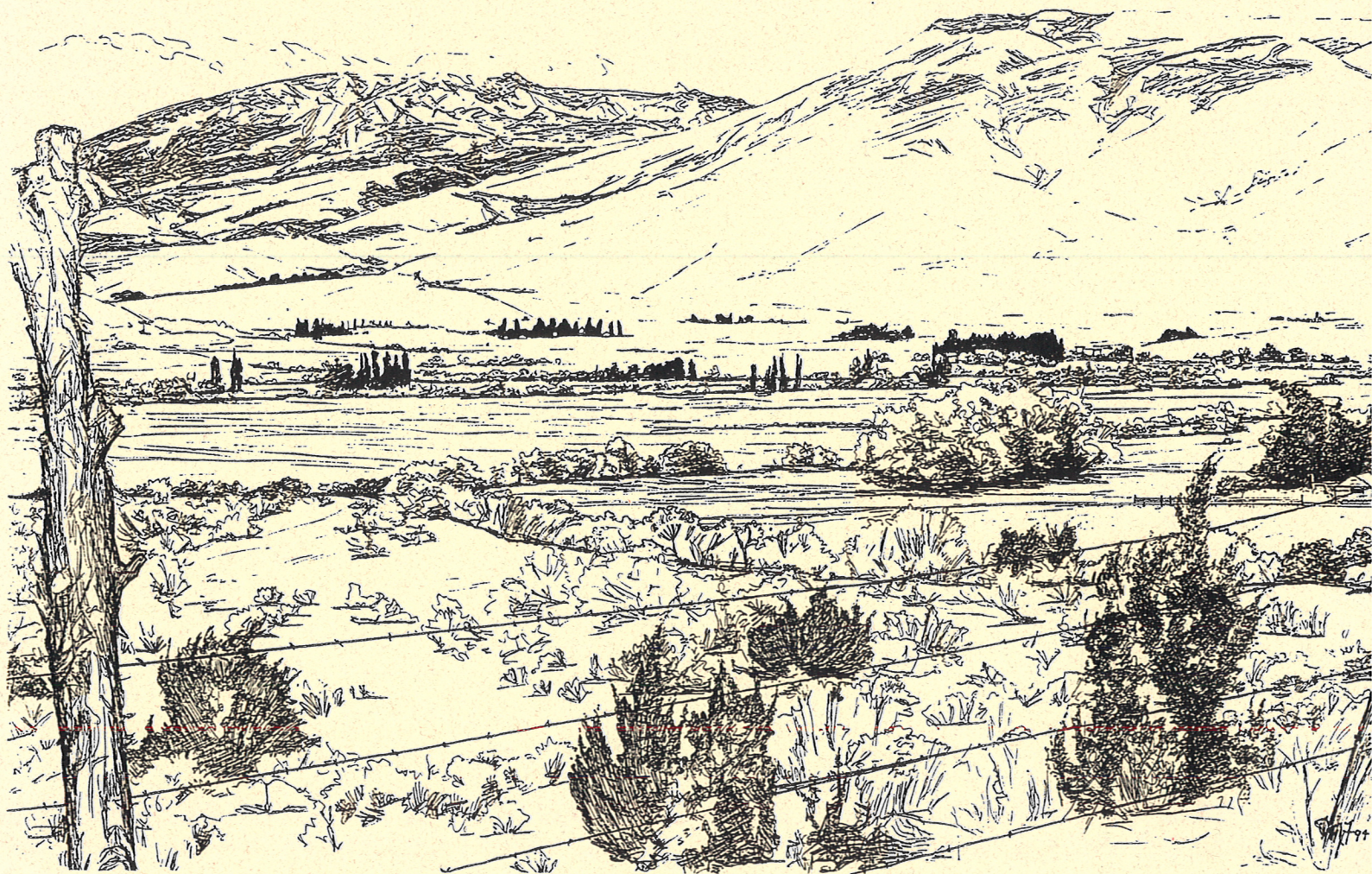
Part of the [Environmental Design Commons](#), and the [Landscape Architecture Commons](#)

Recommended Citation

Utah State University, "InSites, 1995" (1995). *inSites*. 8.
<https://digitalcommons.usu.edu/insites/8>

This Book is brought to you for free and open access by the Landscape Architecture and Environmental Planning at DigitalCommons@USU. It has been accepted for inclusion in inSites by an authorized administrator of DigitalCommons@USU. For more information, please contact digitalcommons@usu.edu.





INSITES • 1995

DEPARTMENT OF LANDSCAPE ARCHITECTURE AND ENVIRONMENTAL PLANNING
UTAH STATE UNIVERSITY, LOGAN, UTAH

From the Desk of the Department Head...

In last year's newsletter, I indicated that the department had just completed an undergraduate reaccreditation visit and that we would be in the process of working on another self evaluation report for the graduate program this year. We are pleased that the undergraduate review and report was positive and that the undergraduate program has been reaccredited for another five year period. This past February a visiting team was here examining the graduate program and has since sent the department its preliminary findings for technical corrections. Although we will not be notified until the end of July with respect to the Board's final recommendation, it does appear that the preliminary findings indicate no serious problems in the graduate program. With regards to self evaluation reports, the faculty can look forward to three years of rest!

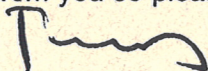
The faculty have identified three distinct areas in which we would like to see program development within our curriculum. Each of these three areas would be in conjunction with other departments and colleges on campus. The first of these is in the area of bioengineering/landscape restructuring. This program focus would also include faculty in the Colleges of Natural Resources and Science. The faculty are convinced that past and current abuses to the landscape within the intermountain area will demand professionals educated and trained in this area of land stewardship.

The second area of program development is in historic preservation/rehabilitation. Our belief is that there is a definite need for appropriate inventory and analysis of historic landscapes, districts, and communities over and above the historical preservation of architectural structures. We hope to articulate and integrate this program emphasis with faculty members in the Department of History, professionals in the State Historical Society, as well as faculty in the Department of Architecture at the University of Utah.

The third area of program emphasis would center on geographical information systems (GIS) and information technology. A major objective within this program would be to better serve small towns and rural areas throughout the intermountain west with appropriate data and information systems to assist in their growth and development challenges. It is a program which we will be developing more closely with the Department of Natural Resources and the Office of the Vice President for Extension Services. Progress in this area would clearly contribute to the success and development of programs in bioengineering and historic preservation.

Two years ago, Laura Musacchio joined our faculty as an Assistant Professor. Unfortunately for us, she has decided to pursue a PhD in landscape planning at Texas A & M, this coming fall. We have all enjoyed having Laura with us in the department, and we wish her the very best. We are pleased to announce, however, that following a national search for a replacement, we have hired Ms Carolyn Lavoie (see following story).

I have been granted the privilege of a sabbatical for this coming academic year, and as such, look forward to taking advantage of this opportunity both professionally and personally. The Department will function under the capable leadership of Vern Budge as Acting Department Head during my absence. I would also like to thank all of you who have made contributions to the department this year. Your continued generosity is appreciated by all of us in the department and particularly by those students who are helped by your support. We always enjoy hearing from you so please stay in touch. Take care.



Richard E. Toth
Department Head

FACULTY UPDATE

introducing our newest faculty member...

Caroline Lavoie

Assistant Professor Lavoie has recently completed a dual degree program at the University of Southern California, where she earned both the Master of Landscape Architecture and Master of Urban Planning degrees. She received a BA in Landscape Architecture at the Université de Montréal, Montréal, Canada, and has worked for several years in private practice in her native Montréal. Her latest projects with the firm Cardinal et Hardy, Aménagement et Design Urbain, have dealt with the reintegration of housing into the downtown area, and with the historical interpretation of an urban park.

Professor Lavoie states that she is interested in "the use of metaphor as a design tool, particularly in the ideas of movement as taken by landscape and urban design; and phenomenology, taken as a theoretical approach in design." She has recently received a grant from the government of Québec to pursue her research in this area, entitled the "Metaphor of Movement and the City."

Caroline has offered to tutor us all in the French language, in exchange for some pointers on fly fishing ... sounds like an interesting challenge. Welcome to the LAEP Department, Caroline!

David Bell

Dave is currently helping a group of three graduate students finalize and package the graduate planning studio project for 1994/95, which looks at the privatization of the community of Dutch John. Dutch John was originally established to house the dam construction workers and later USFS, BLM, USPS and others associated with managing land and facilities around Flaming Gorge Reservoir. Privatization will rid the Forest Service of the community management business, but will create new burdens and responsibilities for Daggett County. Our purpose is to illustrate the options for growth in Dutch John and to document the future impacts those options will have on the County.

Dave's extension projects have kept him hopping this year. In addition to the Dutch John Project, Dave has prepared a Master Plan for Downtown Nephi which provides for a new streetscape, new business locations, and utilizes Salt Creek as a downtown amenity; is continuing to work with Monticello City, Randolph City and Cedar City on Arena and Rodeo Complex Plans; has prepared park plans for North Logan City, Daggett County and River Heights City; is helping Richfield City with a Downtown Master Plan and a Community

Entrance Landscape Plan; and is working with North Ogden City and Pleasant View on the development of an Urban Trails Plan.

John Ellsworth

John Ellsworth has been active in a number of professional areas during the past year. He presented two papers at the Annual Conference of the Council of Educators in Landscape Architecture at Mississippi State University in Long Beach, including: "The Wildfires of '88: Five Years of Repeat Photography in Yellowstone National Park", and "Evaluating Preferences Toward Xeriscape with Computer Visual Simulations". Another paper on scenery monitoring after forest wildfire is in preparation for presentation to the International Association of Wildland Fire Conference in Coeur d'Alene, Idaho, this coming Fall.

John is on the planning team for a Training Course for USDA Forest Service Landscape Architects on the new "Scenery Management System", which replaces the Forest Service Visual Management System. He is also a member of the USDA Forest Service National Task Force on Visual Simulation, and Chair of its Committee on Legal and Ethical Issues and a member of its Committee on Federal Agency Policy.

Last Summer, John made a return visit to Japan where he was able to combine business with pleasure, giving presentations at Yamanashi University in Kofu, and at the Kyushu Institute of Design in Fukuoka.

"Easy Rider" Ellsworth has recently become the proud owner of a Harley Davidson (with extra chrome) and can be found in his leisure hours checking out the horizontal and vertical road alignments of Cache Valley.

Jerry Fuhriman

Jerry continues to spend a good deal of his non-teaching time increasing the involvement of Native American students within our program. Last fall Jerry made a presentation at the American Indian Council of Architects and Engineers (AICAE) national conference regarding our department's interest in developing a unique Native American oriented workshop program. (David Garce, an alumnus of our program, BLA '80, is the current president of AICAE.) This organization has given its full support for the USU workshop program. The proposed workshop program, entitled Native American LAND DESIGN Program, is intended to provide a means for bringing professional Native American landscape architects, architects, interior designers and resource planners, together with students of these same disciplines. We plan to have the first

Fuhriman continued...

workshop sometime during the next academic year. Jerry is currently working on a proposal that will hopefully result in the funding of this workshop program. Jerry has been invited to present the workshop concept at the 1995 Council of Educators in Landscape Architecture Conference as well as at the 1995 American Institute of Architects conference.

At the present time we are very fortunate in having four Native American students in our undergraduate program. Alonzo Coby (Shoshone-Bannock) and Joe Peterson (Navajo) are Freshman students, while Delverne Seaman (Shoshone-Bannock) and Darrel Tso (Navajo) are Sophomore students. Delverne has just accepted a summer internship with Civitas, in Denver, Colorado (Principals - Mark Johnson, Todd Johnson and Ann Mullins are all mid-70's LAEP graduates). We appreciate the great assistance given to this program by alumni.

Our Native American students are currently involved in developing design concepts for the upcoming Little Bighorn Battlefield Memorial (Custer's Last Stand) national design competition. So far our design team consists of the four Native American students and David Garce and Associates, Landscape Architects. N. Scott Momoday, the Pulitzer Prize winning Kiowa, has also joined the team.

Those alumni from long ago and far away may be interested in knowing that Jerry and Sue have purchased the Laval Morris home in Providence. The only proposed change to the property is the addition of a sweat lodge for the Native American students. Those of you who knew Laval realize that he would approve of this method of discouraging development adjacent to the property.

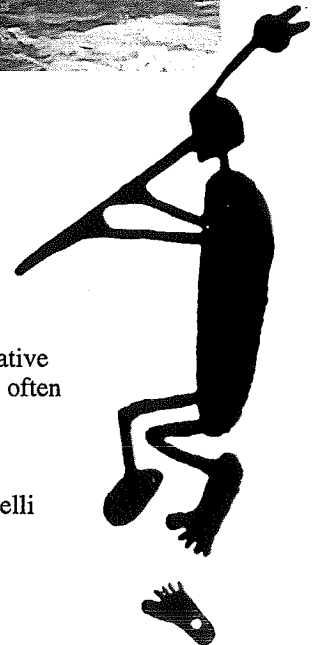
Craig Johnson

Craig was busy on a number of projects this past year. The biggest and perhaps most challenging study has been the Camp Pendleton Biodiversity Project in Southern California. Professors Johnson and Toth are working in cooperation with a group from Harvard and the EPA. Craig's responsibility has focused on detailed studies of the habitat requirements of a number of threatened and endangered wildlife species. Craig will also be working with MLA candidate, Todd Sherman, on a wetland restoration project at the Sharon Steel superfund site in Midvale, Utah. This contract is with the Utah Environmental Quality Department. His LAEP 612 graduate students are currently involved in a similar wetland and upland habitat restoration project in cooperation with two former students working for USU on the relocation of the Farmington Gardens.

Craig, along with former LAEP faculty member, Lee Nellis, presented a paper entitled, "Applying the Principles of Landscape Ecology in Planning Practice in

the Northern Rocky Mountains" at the U.S. International Landscape Ecology Conference in Minneapolis. He also presented a paper entitled "Planning and Designing for Multiple Use Role of Habitats in Urban/Suburban Landscapes in the Great Basin" at the National Wildlife Society meeting in Albuquerque, New Mexico. This paper has been accepted for publication in the journal Landscape and Urban Planning. In February of this year Craig was appointed to the editorial board of that journal. He was also a speaker at the College of Natural Resources 1995 Symposium.

On Earth Day Craig received an award from Logan High School in recognition of his habitat conservation and planning efforts in Cache County. Even with these activities, he has had time to discover several new fly fishing honey holes on the Bear River.



Right:
Kokopelli, the ancient Native American flute player, as often depicted in pictographs

Above:
Prof. Johnson, as Kokopelli "wannabe"?

John Nicholson

Professor John Nicholson has recently returned from his second Fulbright Award which was spent at the Technical Institute of Dresden in Germany. While John was in Europe during his sabbatical, he also attended several meetings with faculty from the University of Sheffield, the University of Hannover, and the University of Ljubljana. As mentioned in previous newsletters, it is the department's intent to maintain our international associations with these institutions and associated faculty.

Laura Musacchio

Laura had an exciting summer participating in Design Workshop's Faculty-in-Residence Program in Tempe, Arizona. She spent most of her time working on an imagery notebook for the Clark County Wetlands Park in Las Vegas, which provided recommendations for the design of the Park's architecture and landscape.

In the Fall, Laura concentrated on implementing her course development grant for LAEP 270 Site Analysis Methods. She created an extended syllabus and reader that was well received by a peer review committee in the College of Humanities, Arts, and Social Sciences. New supplies were purchased with the grant money, including a set of infrared aerial photographs of the site used in the class.

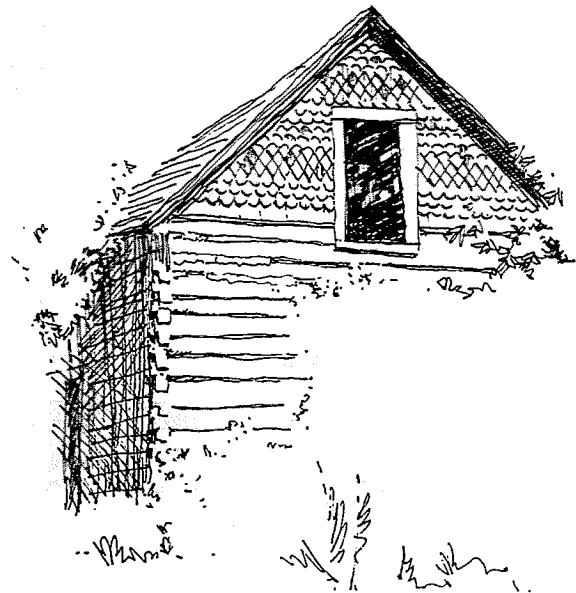
Laura will be leaving the LAEP Department in June to pursue her Ph.D. in Urban and Regional Science at Texas A&M University. Her studies will focus on wetlands and environmental planning management. She received a doctoral teaching assistantship and will be teaching a section of introductory design studio in the Department of Landscape Architecture and Urban Planning.

She has enjoyed being a part of the LAEP faculty the past two years and will miss all her colleagues and students. She encourages any one who will be visiting Houston, Austin, or College Station to contact her at the following address:

2301 Broadmoor Drive, #262
Bryan, Texas 77802
(409) 731-8841

Vern Budge

Professor Budge returned from last years sabbatical leave filled with energy and ideas. In fact, he's so full of energy that the editor has been unable to get him to slow down enough to write up an entry for this edition of InSites! Vern will be Acting Department Head this coming year while Dick Toth is on sabbatical leave. If only he can figure out how to fit the AutoCADD station into the Department Head's office, he should be quite content



Michael L. Timmons

Michael has recently completed a research project with the National Park Service, the Idaho Department of Parks and Recreation, and the Cassia County, Idaho, Planning Commission, developing guidelines for development in and around the recently designated City of Rocks National Reserve. Entitled Cassia County Design Guidelines for the City of Rocks and Related Areas, the purpose of this work is twofold. First, it examines, analyzes, and documents the essential elements of the visual landscape of the area. Second, it proposes a set of guidelines that will encourage and assist future development, both within the City of Rocks as well as along a designated historic loop route, to occur in a manner compatible with traditional landscape and architectural patterns. Issues which were addressed included densities of development, setbacks and siting of built elements, massing and grouping of structures, architectural appearance, signage, and planting design. Intended to serve a broad audience, the guidelines were written to be useful to the County Planning Commission in their review of development proposals, as well as to private citizens or developers desiring to undertake projects compatible with the unique visual qualities of the study area. Assisting on the project were Marilynn Feuerstein and Cynthia Butler Moffitt, third year graduate students in the MLA Program.

The City of Rocks National Reserve also served as a vehicle for the third year Recreation Design Studio, which developed a series of alternative master plans detail facility plans for the new park. An early October snow storm caused the cancellation of a planned on-site camping experience for the class, and cut short the site visit with white-out conditions. The same class developed design schemes for Forrester Acres Park in Smithfield, Utah. The solution created by graduate student Lars Anderson was selected by the Smithfield Parks and Recreation Commission for implementation, and Lars was awarded a First Place check.

STUDIO UPDATE

SENIOR CLASS

BERRY ELLISON

Fall Quarter the Seniors traded in their T-squares and french curves for a mouse and monitor. LAEP 410 received a serious upgrade this year with a new computer lab stocked with the latest drafting software. Vern Budes' sabbatical last year brought the computer applications course onto the cutting edge of technology with AutoCAD and LandCADD. The quarter began with the basics, such as setting scale, creating layers, and sheet sizing. We soon were determining bearing and distances of property lines, road alignment, parking layout and terrain modeling with the flick of a button. The course continued with GIS mapping where we were taught to scan data (such as USGS maps) and rapidly complete site analysis and suitability maps. Fall Quarter was a crash course into the latest technology.

Winter Quarter the seniors took a field trip to beautiful Sandy City, Utah. LAEP 411, Project Design, focused on the development and design alternatives for downtown Sandy. Professor Jerry Fuhrman guided the students through all phases of the project, from defining problems to goals and objectives and refining plans. Jerry required individual, as well as, group problem solving sessions where the students had to make educated design and planning decisions. The course was geared toward program formulation and the entire planning process.

Spring Quarter began with team projects. LAEP 406, Emerging Areas in Landscape Architecture, focused on visual assessment for the first five weeks. Teams of four studied and assessed the Logan Canyon Highway Project using various techniques. Methods of assessment ranged from the structured BLM method to the philosophical exploration of the human landscape interaction. Projects were presented weekly and presentation format was at the teams discretion. The remaining five weeks focused on visual simulation. John Ellsworth introduced the students to computer rendering using the latest photo-styling software. The simulation project depicted proposed highway changes, such as shifted road alignments, road widening, and installation of new bridges.

JUNIOR CLASS

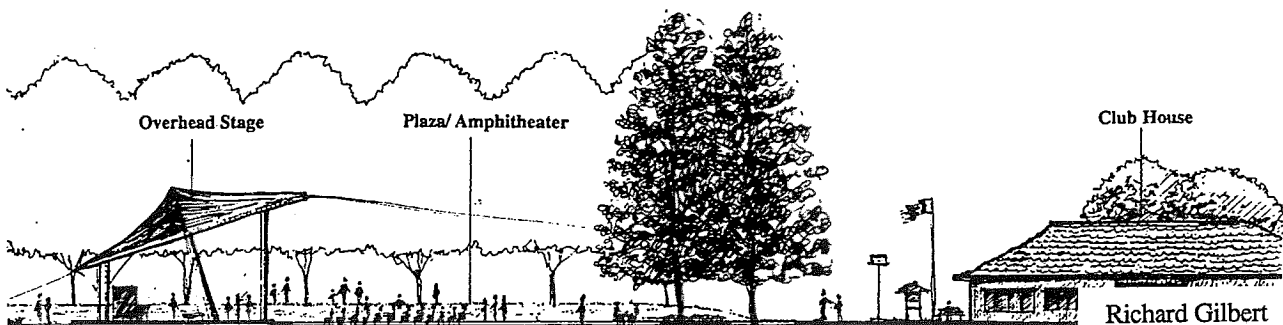
ASHLEY KOWALLIS

The Junior Class, in conjunction with second-year graduate students, began the 1994-95 school year with a recreational project of the historic City of Rocks located in Idaho. Working with the National Park Service, Idaho State Parks and Recreation, and Cassia County, students were to analyze the site and locate a visitors' center, several campground sites, and other facilities within the park. Professor Timmons led the class on a one-day field trip of the site in blizzard conditions; (an annual ritual?!). A project design for the entire equine facility of Forrester Acres Park in Smithfield followed, from which several student projects were picked to be presented to the Smithfield Recreation Committee. The solution proposed by graduate student Lars Anderson was selected as the "winner", and Lars was awarded \$100 for his efforts! At the same time, Professor Johnson kept Juniors busy with native plant transect projects and papers in the Planting Design course.

Winter quarter brought retaining walls, decks and storm-water drainage calculations in the Junior construction course taught by Professor Ellsworth. For those inquiring minds, a Proposal Writing seminar was also taught by Professor Ellsworth. The only project of the seminar was to submit a proposal response to a Request for Proposals (RFP). This seminar gives Juniors the opportunity to propose an individual Senior project that will be reviewed by the LAEP faculty.

Jay Aguilar, planner for the Bear River Association of Governments, guest-taught the City and Regional Planning course. A final group project for the course dealt with the layout and design of an affordable subdivision within Logan City. Final alternatives which included considerations of architectural styles, cost estimates and ordinances for subdivisions were presented to the city planners.

Robert Desmond (BLA '86) a Salt Lake City based landscape architect, returned for a second year in the Junior Design Studio. Students worked on the three-phase Block 57 project located in SLC. Phase



Kowallis continued...

one included building placement and concept development; phase two, master planning of landscape spaces, including a model; and phase three consisted on the design development of key landscape spaces. Each phase ended with a faculty jury review of the projects.

Currently, Juniors are finishing up with the construction documents of Block 57 project design, taught by Professor Dave Bell. Included in the package are layout, dimensioning, grading, planting, irrigation, design details and lighting plans. Professor Vern Budge gets the class out of bed with the 8:30am Irrigation course. Students got an added surprise, and are now working on grading and alignment problem for an overpass freeway.

SOPHOMORE CLASS

BARRY GONNELLY

The sophomores began this year with positives attitudes, clean desks, and high hopes. They maintained all of these things through the first day of classes as the realization of the second year hit hard. Construction, Landscape History, and Site Analysis were all included in the Fall Quarter and allowed the sophomores to regularly be seen working together in the studio at all hours (especially those hours right before sunrise). Courageously they battled through and arrived at Christmas break ready for a much needed recharge.

After a much too short vacation they were faced with more history, advanced graphics, and the second site design class. Professor Craig Johnson's class had us mixing it up with the public at large as we surveyed people for opinions on what the new library's courtyard should include. Questionnaires were flying like Canadian mosquitoes in search for enlightenment. Little did the sophomores know that divine inspiration came only in the form of the sweet scent of new markers.

Spring Quarter arrived in a peculiar fashion, with rain and rain and a little more rain. There were even rumors started that the architectural design class would be involved with constructing a model of the Ark. However, the weather allowed plenty of time for study and project work. LAEP week in conjunction with the 25th Anniversary of the college of HASS had us busily decorating the Fine Arts Building for the gala but we were able to find time to rest during the opening night of Shakespeare's *Tempest*. Isn't that another rain reference?

The year is now quickly coming to an end and the sophomores are furiously working in hopes of matriculating into the upper division.

FRESHMAN CLASS

BEN WILLITS

The '94-'95 Freshman class is not a "typical" freshman class that one would find in other departments. The freshman class in the LAEP Department consists greatly of transfer students and students who have already completed a few years of college (often Engineering), before finally "seeing the light". For this reason, there exists a great diversity of backgrounds and added knowledge to the class.

The year began with Graphics 120, taught by Vern Budge and in part by Jerry Fuhriman. We learned basic graphic skills including isometrics, multi-views of plan, and perspectives just to name a few. We received our first doses of what it means to be an LAEP student - Late nights in the studio, being confused for hours, then finally saying, "oh, yeah" but usually somewhat skeptically! Graphics proved to be a valued learning experience for all and will provide a solid base for the remainder of our program and careers.

After recovering from Fall Quarter and Christmas vacation, it was back to the grind. A few students abandoned us after Fall Quarter, but the rest continued with Theory of Design, once again with Professor Vern Budge. In this class we learned all of the basics of design, focusing mainly on the principles and elements. This course proved to be somewhat abstract as far as our assignments were concerned and many struggled at first. But by the end of the quarter, and with our final projects, the majority had grasped the theoretical concepts and really ended up enjoying this aspect of the design process.

Finally, in Spring Quarter, we put the two previous courses together in Applied Theory of Design, with Professor Jerry Fuhriman. This class proved to be very practical, yet very challenging. We dealt with designing spaces around or in a courtyard area of buildings, then constructing scaled models of our designs. This is when many discovered what it meant to actually pull an "all-nighter". This class provided a vital learning experience and we got a good taste of many challenges that would face us in the profession.

Overall, Freshman year was a great learning experience and most of us realized why we chose this profession - the endless solutions to problems which brings out the creativity and artist in each and even more importantly, the great friends and people we associate with. There exists such a great comradery amongst fellow students and everyone truly looks out for the other. We look forward to many great years to come in both the major and the profession.

GRADUATE NEWS

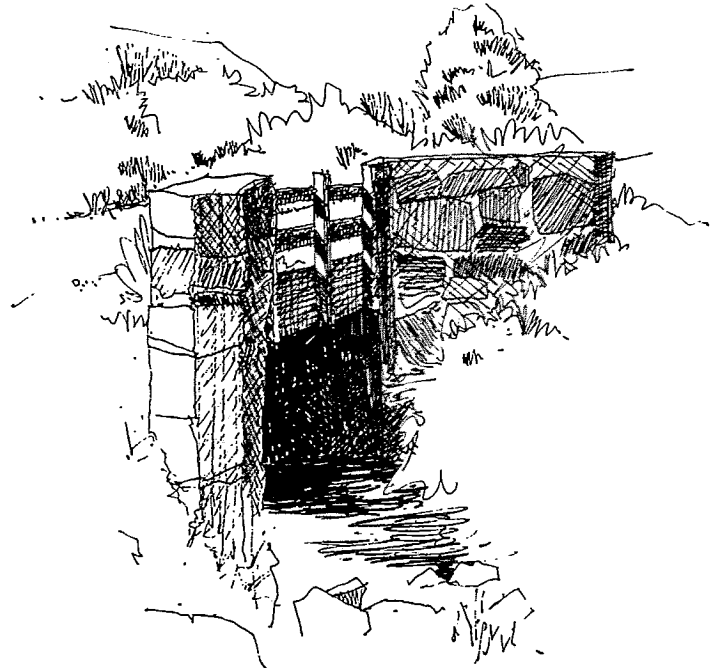
RECENTLY COMPLETED THESES

- Nancy Brunswick "Visual Preferences for Interpretive Services and Facilities in Logan, Canyon, Wasatch-Cache National Forest"
- Phyllis Bustamante "Heavy Metal Contamination from the Hard Rock Mining Industry"
- Sarah Creachbaum "Campground Planning and Design in Grizzly Bear Habitat in the Greater Yellowstone Ecosystem: A Comparative Analysis"
- Beth Ludvigsen "The Social/Psychological Aspects of Rural Campground Design"
- Scott Mendenhall "Communication Effectiveness of Different Computer Generated Rendering Techniques: A Landscape Architectural Application"
- Beth Pyle "A Walk on the Wild Side: Conceptual Master Plan and Vegetation Management Plan for the Ogden Nature Center"

THESES IN PROGRESS

- Gary Worthley "A Planning and Design Methodology for Developing Outdoor Classrooms in Utah"
- Jackie Hoffer "Managing for Change in a Rural Community: A Case Study of Escalante, Utah"
- Byron Huckee "Determining Resolution Sufficiency for Computer Digital Imaging with Implications for Visual Simulation"
- Todd Sherman "Restoring Wildlife Habitat Values to Damaged Wetlands in the Intermountain West Sharon Steel Case Study"
- Clayton Trapp "The Use of G.I.S. and Remote Sensing in the Analysis of the Proposed Two Forks Dam Project in Southwest Metropolitan Denver"
- Jeff Scarborough "The Legal Environment for Landscape Architects in Utah"
- Ronald Vance "Perception and Use: A Survey of Users in the Lakes Management Area, Kamas Ranger District, Wasatch-Cache National Forest"
- Ruth Wescott "Limiting Avian Species/Human Conflict: Design Guidelines for Trail Systems in Great Basin Riparian Zones"
- Bart Dean "Recommendations for Design Response to Meet the Experience Expectations of Off Road Vehicle Users in the Little Sahara Recreation Area, Central Utah"

- Jeff Gilbert "Geographic Information Systems for Rural Communities"
- Mead Hargis "Resolving Recreation and Natural Resources Conflicts: Perspectives of Public Land Managers, Recreation Special Interest Publics, and Environmental Advocates"
- Benjawon Ubonsri "The Effects of a Major Transportation Hub on the Planning and Growth of a Medium Size Community : A Case Study of the Logan-Smithfield Northwest Sector"
- Geoff Ellis "Learning From City of Zion: Creative Development Ideas for Utah's Small Towns"
- Lars Anderson "Road Side Revegetation Techniques to Create Wildlife Habitat in Northern Utah"
- Joe Campo "Site Suitability Analysis For an Intermountain Solid Waste Facility: A Study for Cache County, Utah"
- Sarah Uram "A Design Process for Buildings in Urban and Suburban Communities in the Intermountain West"



ADVANCED GRADUATE PLANNING STUDIO
DUTCH JOHN PRIVATIZATION PROJECT
BY JACKIE HOFFER

Over the past several years, the Graduate Regional Planning Studio has worked with numerous rural, Utah communities, assisting them with future growth and development issues. Dutch John, in Daggett County, Utah, was the focus of this years studio.

The Town of Dutch John, created to accommodate workers building and maintaining Flaming Gorge Reservoir, is currently owned and operated by the Bureau of Reclamation. Over the last several years the Forest Service and Bureau of Reclamation have been considering exchanging land in and around the community for private lands in the Ashley National Forest or other National Forest land within Utah. The purpose of the exchange is twofold. First, Dutch John is located with in a National Recreation Area which receives in excess 2 million visitors annually. The demand for service industries (lodging, restaurants, fishing and boating supplies, etc.), in the NRA is exceeding the capacity of what the Forest Service and Bureau of Reclamation can provide. Privatization of Dutch John is seen as a means of meeting the increased need for private services and facilities in the community and immediate area. Second, privatization would eliminate governmental costs of opening and maintaining the town which are currently estimated at approximately \$1 million dollars annually.

If the exchange were completed, the cost of administering Dutch John would be borne by Daggett County and later by the city government as the tax base increased. As a result, Daggett county would have the ultimate responsibility for reviewing and approving developer's proposals, and for providing the necessary public services to the completed projects. To assist the county in deciding what should and should not happen in the area, the class worked with the community, nearby residents, town and county officials, and various government bodies in the development of information and ideas to assist in responsible decision making.

One of the major objectives of the study was to determine how the community of Dutch John could begin to identify natural and cultural resources considered important to maintain, while allowing for new growth and development within and adjacent to the existing community. The planning process involved a series of public meetings, community surveys and issue identification. The range of issues and needs which surfaced became the basis for a series of land use and environmental evaluation models. These models were used to evaluate the strengths and weaknesses of any proposed development and to direct growth to those areas considered most appropriate. The final results of the study included a series of alternative development scenarios ranging from 'No Privatization' through to a 'Large Scale Resort' development and 'Maximum Buildout'. The purpose of these scenarios was to give the residents and other interested parties some idea of future problems and potentials the area may face.

The final report of the study team presented the community with a base of knowledge to better organize and direct development of the historic, cultural and natural qualities currently valued and enjoyed. Armed with this information, residents and agencies involved will be better equipped to make the critical decisions that will affect the future of Dutch John.

1st YEAR GRADUATES

MARK VAN DER ZALM

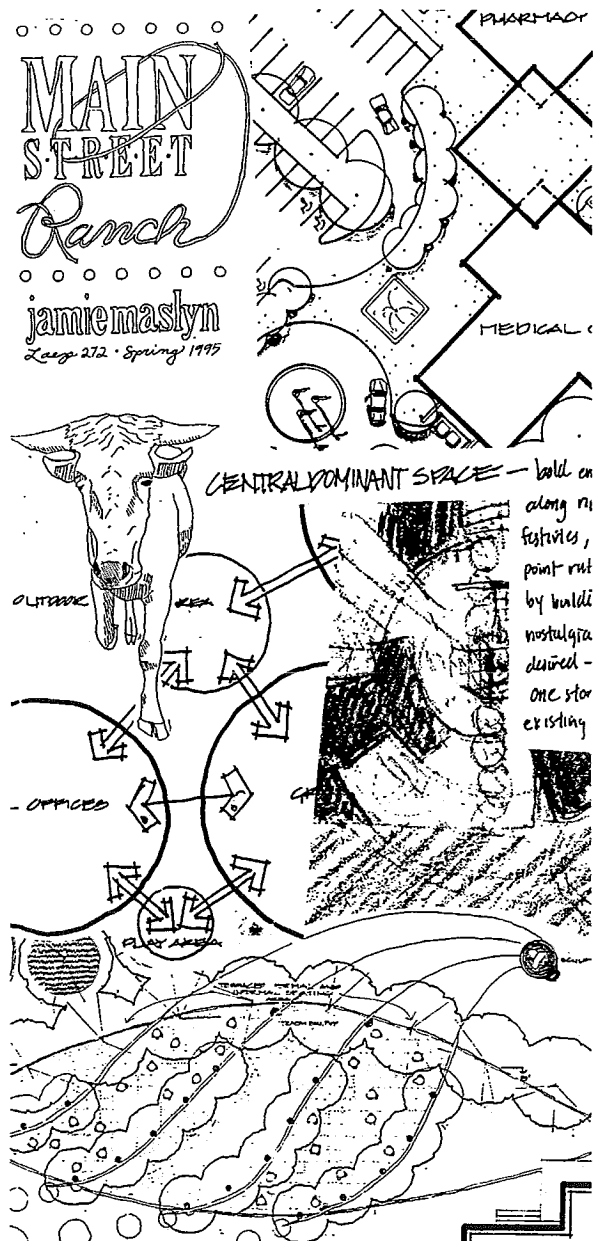
First year graduates were met with many exciting challenges. All of us came to Utah State with diverse backgrounds ranging from Art and History to Political Science and Spanish. We were excited about our new focus and were eager to get started. Our first experience with team work in the arena of Landscape Architecture came with Professor Musacchio's 270 project. We were assigned the task of designing a regional park for a nine mile transect of Cache Valley around the Bear River. A harmonious design concept emerged following numerous disagreements and road-trips. John Ellsworth's Construction Class (LAEP 260) served us with a new challenge. Aside from the obvious rewards of learning construction processes we also received the opportunity to view the incredible sunrise from our studio.

Our first Graduate seminar was an opportunity to meet the faculty - to find out their areas of expertise and to introduce ourselves. Although 'freshmen', we were warmly received and quickly became a part of the Landscape Architecture community at USU. Throughout the first quarter we grew together as a class. Participation in intramural events, various cultural events at 'The Owl' and our Christmas Party showed how we had not only cooperated well in our course work but had also become good friends.

The Winter Quarter brought new challenges with professor Johnson's LAEP 271 class. Our initial lectures in behaviorism and social theories introduced us to a two phase project on the USU Library Plaza. Our initial designs showed promise but lacked a full understanding of behavioral settings and cognitive mapping. After a series of lectures on the benefits of survey's, time-lapse video, and literature reviews we again designed the plaza for our final project. Our final designs were submitted to the library staff for review. Our winter seminar was from faculty that spanned such fields as bear habitat, water-shed management to photography and social aspects and attitudes towards development. The experience also afforded us the opportunity to meet with individuals who might one day play a key role in the development of our thesis'.

Spring Quarter brought a heavy workload under the supervision of Professor Timmons and Professor Fuhriman. Our LAEP 272 class presented us with various parking puzzles, 'Modular Metric Medical and Miscellany Mall', and finally with a revitalization project for block 10 of Logan City. Our class was also charged with the responsibility of a cooperative effort with the Art Department to design and construct the decor for the HASS 25th year celebration. In all, these projects were

invaluable and opened us up to the great diversity of our field. Professor Fuhriman's freshman design study was also a challenging course in which we saw our two dimensional designs come to life in three dimensional form. Our Seminar class, conducted by John Ellsworth presented us with critical information in formulating ideas and a proposal for our thesis. The intricacies of university bureaucracy, margins and headers, spacing and fonts were unleashed in a flurry of sessions with John. Although sympathetic and very helpful, there always seemed to be the semblance of a smile on John's face when he discussed university policy and his role as the thesis coordinator.



collage of the work of Jamie Maslyn, 1st year grad

DEPARTMENT TECHNOLOGY UPDATE

The LAEP Department is continuing the battle to stay abreast of changing technology. An agreement was negotiated this past year with LandCadd International and the Industrial Technology and Education (ITE) Dept. at USU for site licensing of LandCadd software on all 26 ITE CAD lab IBM/DOS computer stations.

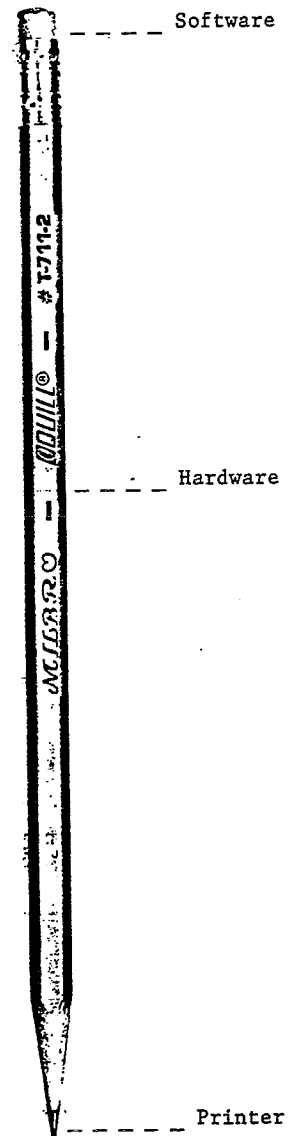
John Ellsworth chaired a College Committee on Computers in the Humanities Division which acquired two mobile computer teaching stations, and successfully petitioned the Student Computer Fee Committee for 47 new power Macintosh Computers, software, and peripherals. He also negotiated an agreement with the RainBird Company to provide 26 site licenses of their IDA irrigation design software at no charge for the DOS computers in the ITE CAD lab.

Vern Budge has returned from his 1993-94 sabbatical, which focussed on advancing his own computer knowledge, enthusiastically leading the charge to integrate AutoCADD more substantially into the curriculum.

And in the LAEP Office, we have finally been linked with the world electronically. Our E-mail addresses are:

Bell:	DBell@wpo.hass.usu.edu
Budge:	VBudge@wpo.hass.usu.edu
Ellsworth:	JEllsworth@wpo.hass.usu.edu
Fuhriman:	JFuhriman@wpo.hass.usu.edu
* Johnson:	CJohnson@wpo.hass.usu.edu
Nicholson:	JNicholson@wpo.hass.usu.edu
Timmons:	MTimmons@wpo.hass.usu.edu
* Toth:	RToth@wpo.hass.usu.edu
Poulsen:	APoulsen@wpo.hass.usu.edu

* good luck connecting ... Dick and Craigs computers are illustrated at right



GUEST LECTURES •1994/95

We consider ourselves fortunate that we are able to enrich our classroom experiences with a wide array of guest lectures throughout the year. Many of those who visit are alumni of the program, who willingly carve time from busy schedules to return to Logan to share professional experiences with current students. Given our relative isolation, this contact with practitioners is of critical importance. We appreciate the thoughtfulness of all of our guests, and extend an open invitation to all alumni who may have plans to be passing through the area to participate in this program. Visitors from the following year included:

Carl Steinitz, Harvard University
Sue Nordstrom, National Park Service
Chris Hartman, U.S. Forest Service
Scott VanDyke, MGB&A, Salt Lake City
Clark Ostergaard, U.S. Forest Service
Ned Jackson, Idaho State Parks
Dave Pugh, National Park Service
Robert Desmond, Landscape Architects, SLC
Mark Peter Keane, Kyoto, Japan
Jay Aguilar, Bear River Assn. of Governments
Cindy Nielson, Sandy City Planning Dep't.

Randall Arendt, Center for Rural Massachusetts
Mark Johnson, CIVITAS, Denver, CO
Ann Mullins Johnson, CIVITAS, Denver, CO
Richard Shaw, Design Workshop, Aspen, CO
Rob Sweeten, Bureau of Land Management, Moab
Larry Headley, Santa Barbara, CA
Timothy Franke, Harvard University
Don Staley, University of Georgia
Peter Callahan, Kansas State University
Larry Whitlock, Ocean City, MD
John Garfield, Fort Worth, TX

LAEP WEEK

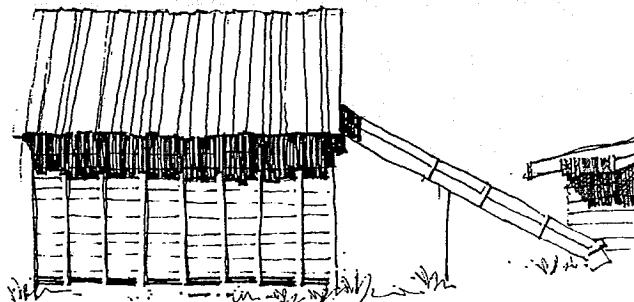
The traditional LAEP Week festivities were enhanced this year by the concurrent recognition of the 25th anniversary of the College of Humanities, Arts, and Social Sciences, of which we are a part. A gala celebration spotlighting the Arts afforded a festive opening to both events. An evening of musical and artistic demonstration, followed by food and a special performance of Shakespeare's *Tempest*, enlivened the Fine Arts Center with collaborative spirit not soon to be forgotten. For our part, a series of installations dubbed "Landscape Art-chitecture" (a joint LAEP and Art student production), provided a striking setting for the merrymaking.

Of course, what is LAEP Week without the annual faculty breakfast? Again this year, the "aging sages" of the Department demonstrated their culinary skills with a mouth-watering array of gastronomic delights: Café du Timmons, Juis d'Oranje Ellsworth, Milk Mussachio, Bacon á la Budge, Pommes du Terre Frites Gus, Crépes Toth, et Omlettes de la jour Fuhriman.

The recipient of the 1994 Morris Traveling Fellowship, Bart Dean, fascinated his audience with tales of mainland China. As we imagined the beautiful images (Bart's camera was stolen half way through the trip), he told us how to pass as a Chinese student and live it up on \$5 a day. (Of course, that only works if, like Bart, you happen to speak Mandarin).

The LAEP Film Fest featured *Koyaanisqatsi* and *the Fountainhead*, but the predictable crowd pleasing favorite was, once again, *Lines of the Future, Part 3: Home Planning*. This 1966 film classic features the aspiring young actor / professor, Craig Johnson, complete with flat top, heavy rimmed eyeglasses, and plaid sport coat, as he struggles to read his cue cards.

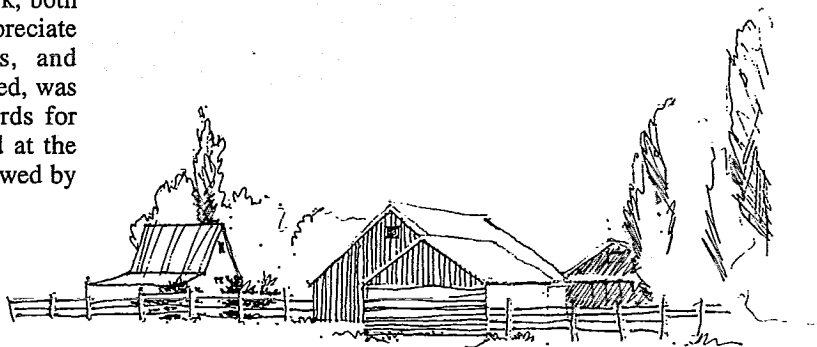
Outstanding lectures by a number of alumni gave a sense of perspective to the legacy of the USU LAEP program. To observe the range of work, both in scale and type of project, as well as to appreciate the geographic distribution of graduates, and professional recognition that they have received, was a highlight of the week for students. Awards for students, faculty, and alumni were presented at the Recognition Banquet at Zanavoo Lodge, followed by dancing to the live music of *Mirage*.



REUNION

This year, the department encouraged graduates from the classes of '85, '75, '70, '65, '55, and '45, to join us for ten year class reunions as part of LAEP Week. Although the attendance was less than overwhelming, we were able to renew ties with several faces from the past. Joining in the fun were **Larry Whitlock** (Ocean City, MD) and **Stuart Loosli** (Salt Lake City), from the Class of '65, and **John Garfield** (Fort Worth, TX) and **Dave Racker** (Salt Lake City), from the class of '70. Larry and John both presented overviews of professional activities since leaving USU to an appreciative audience of students and faculty.

We would like to encourage alumni to participate in future reunions, as a means of keeping in touch with each other and with what's happening at your alma mater. Although time constraints prevent our organizing these get-togethers, we will be happy to provide assistance with mailing lists and local contacts for next year. Energetic members of the classes of '46, '56, '66, '76, or '86 who may wish to try organizing classmates for a rendezvous, either in conjunction with LAEP Week or at another time, should contact Prof. Michael Timmons at the LAEP Department.



FACULTY AND STUDENT AWARDS

LAEP Teacher of the Year
Jerry Fuhrman

LAEP Advisor of the Year
Michael L. Timmons

Faculty Medal
Scott C. Peters

LAEP Outstanding Students
Michael R. Childs
Scott C. Peters
Wade Peterson

Outstanding 1st Year Graduate Student
Jennifer Lynn Pettyjohn

Outstanding 2nd Year Graduate Student
Byron E. Hukee

Outstanding 3rd Year Graduate Student
Jacquelynn D. Hoffer

Outstanding Sophomore Student
Debi E. Reynolds

Outstanding Junior Student
Rebecca Lynn Lundgren & Richard L. Gilbert
American Society of Landscape Architects
Certificate of Honor
Cynthia B. Moffett, Graduate
Scott C. Peters, Undergraduate
Wade C. Peterson, Undergraduate
American Society of Landscape Architects
Certificate of Merit
Bart Dean, Graduate
Michael R. Child, Undergraduate
Amy Rawlinson, Undergraduate

David Jensen Scholarship
Jennifer Lynn Pettyjohn

Morris Traveling Fellowship Award
Jacquelynn D. Hoffer

National Honorary - Sigma Lambda Alpha
Lars D. Anderson
Wesley D. Baumgartner
Christy Calvin
Geoffrey E. Ellis
Richard L. Gilbert
Jacquelynn D. Hoffer
Byron E. Hukee
Kim R. Hunter
Craig C. Kunz
Jeffery D. Lang
Rebecca Lynn Lundgren
David G. Mecham
Edward B. Murdock
Stella A. Palmier
Todd A. Sherman
Gary L. Worthley
Alisa C. Zollinger

DONORS

Donations to the LAEP Department have been received through the USU Development Office from the following individuals during the past year. We thank you for your continued generous support.

John & Beth Andrasko
James Henry Arp
James Barbieri
John Robert Behling
David O. Bigelow
Kenneth R. Brooks
Vern Budge
Scott & Marie Campbell
David A. Christensen
E. Jay Christopherson
Civitas, Inc.
John C. Corbett
Mellon Bank Corp.
J. Raman Drake
Charles Everson
Richard W. Grover
Mike & Christine Hamberlin
Linda Hendy
Scott Johnson
Elizabeth C. Josephson
Gerald F. Kessler
Stuart Loosli
Wm. Lye
Joseph DeVerl Mills
Hugh Morton
Allen L. Scott
Kevin & Pattie Shields
Kenji & Helen Shiozawa
Robert W. Smith
John Smith
Jan Striefel
John Donald Tarter
David Tibbetts
David Trueblood
Robert Watkins
Don & Rosemary White
Gary Woodward
Linda Wright

DISTINGUISHED ALUMNI AWARDS 1995

Several years ago, the LAEP Department began a program to recognize outstanding efforts made by alumni of the program since graduation from USU. Annually, the faculty select a worthy recipient or recipients, based upon contributions made to the discipline of landscape architecture as well as to the LAEP program. This year, the Department selected four outstanding graduates of the program to be recognized as Distinguished Alumni. Those chosen are all graduates from the 1970's and have all distinguished themselves as principals in major design firms in the state of Colorado.

Mark Johnson, BLA '75, is a leading landscape architect and urban designer known for his creative approach and broad experience in the design of public spaces and institutional landscapes across the country. As a principal of Civitas his work has gained recognition for Civitas as a firm that is setting new directions in landscape architecture. With his background in urban design, he emphasizes the opportunities for people to find exciting, enjoyable places in the city as a critical counterpoint to conventional urban spaces.

Mark has played a leadership role in many significant recent projects in the Rocky Mountain region including principal designer for the new Denver International Airport Landscape, a multibillion dollar project designed to expose millions of visitors annually to the diverse beauty of Denver and its region. He is also principal urban designer for the RTD Metro Area Connection Light Rail line in central Denver and principal in charge of landscape designer for the Clark County Government Center in Las Vegas. Perhaps his most prominent local work has been as designer of the campus master plan and reconstruction of the Auraria Higher Education Center in downtown Denver. He has been responsible for site designs of corporate facilities, streetscapes, campuses, and redevelopment plans which significant and appropriate to their regional environments across the country.

Mark maintains an active role in the development of design thinking and professional affairs. His contributions include numerous lectures, three AIA R UDAT teams and service as juror for both the National Award Program of American Society of Landscape Architects and the Colorado Chapter ASLA Design Awards. He is a frequent visiting critic, recently serving at the University of Pennsylvania, Utah State University and the University of Colorado, where he is an associate professor adjunct. In 1992 he was made chairman of the Editorial Advisory Committee of Landscape Architecture magazine and was a speaker at the Denver Art Museum lecture series and the Utah Design Arts Council Symposium.

Mr. Johnson's education includes a Master's in Urban Design with Distinction from Harvard University (1982), and a Bachelor of Landscape Architecture Magna Cum Laude, from Utah State University (1975).

Ann Mullins, MLA '76, is both a landscape architect and managing principal of Civitas. Her efforts in developing business, staff and financial management strategies have been responsible for the steady growth and stability of the firm. In her role, Ann directs the work of the firm's financial and administrative staff as well as developing financial planning tools and acting on growth development opportunities. Her involvement provides the firm with the stable profitable business environment that enables Civitas to provide the attention to clients and design detail that characterize the work of the firm.

Ann brings a conservative, long-term viewpoint to management. With weekly financial reporting, monitoring of project budgets and careful control over administrative and overhead expenditures, she has allowed the design professionals of the firm to focus their attention on client service and design. The firm's integrated accounting software has allowed Ann to provide up-to-the-minute reporting for the principal's to use in responding to opportunities as they arise, and to provide full monthly and quarterly financial statements for regular meetings of the Board of Directors.

Ann's emphasis on strategic planning has developed a unique management structure that focuses on a core group of dedicated Coordinators, each of whom is responsible for the smooth operation of one area of the business. Under her direction, Coordinators in the areas of Staff Management, Project Management, Project Delivery Marketing, Design and Office Management meet weekly to address current issues. The structure has proven to be uniquely effective in allowing the firm to be stable yet adaptable to every project need.

Ann has transitioned to her management role after several years as a senior landscape architect at nationally acclaimed firms including Sasaki Associates, Carol R. Johnson Associates and Jones and Jones. Her work has included significant corporate headquarters, campus design and urban streetscapes with an emphasis on design and construction documentation.

Ms. Mullins is a registered landscape architect in Massachusetts and received her Masters in Landscape Architecture from Utah State University (1976), and a Bachelor of Science in Mathematics from Wells College (1971).

Todd Johnson, BLA '76, the third principal of Civitas, is

Johnson continued...

a landscape architect and urban designer with unique international experience in Canada, Japan and Israel. He has been involved in numerous planning and design efforts, bringing to each the skill to yield optimum benefits to project owners and users. The diversity of his cultural experience gives him a critical eye to conventional design solutions, allowing Civitas to maintain its innovative approach to the most challenging projects.

Todd's expertise in landscape analysis and master planning was instrumental in achieving an inventive plan for a golf course and wellness resort in Kochi, Japan, that exceeded the client's expectations for the design of an environmentally sensitive resort. Todd was responsible for coordinating the planning of the Kananaskis Valley site selection and development plan for the 1988 Winter Olympics in Calgary, Alberta. In 1982, he received a fellowship from Harvard as consultant to the city engineer in Jerusalem, leading to a year of study to develop proposals for the redevelopment of open lands surrounding the Old City. In 1984 the project was awarded First Prize in Urban Design by Progressive Architecture magazine. Most recently Todd and artist Larry Kirkland created dramatic new gardens for the Great West Life U.S. Headquarters using fountains, sculpture, stone plazas and plantings to create a dramatic garden environment that evokes fundamental meaning from the landscape.

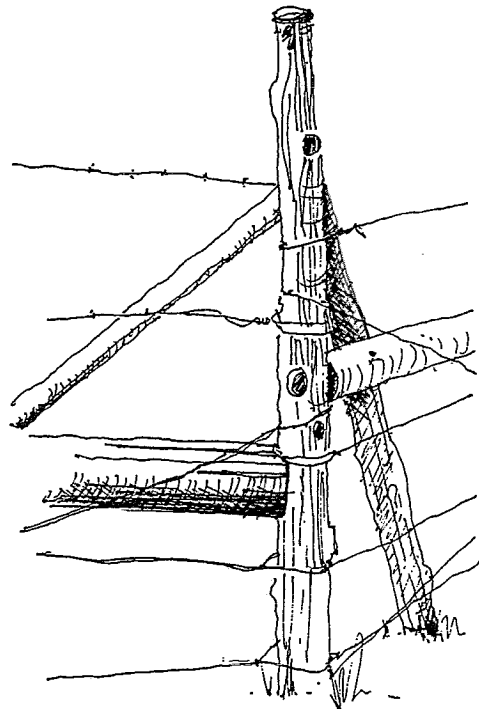
Todd's professional service has included numerous lectures such as "Limited Water Gives Form," Arizona State University; "Expressive Content of Arid Landscapes," University of New Mexico; "Colorado Regionalism," AIA, and "Urban Design in Denver," AIA. He has also taught design studios at Utah State University, the University of Colorado at Denver and Arizona State University. He is co-author of "Perfecting the Ordinary," a profile of the office of Hanna Olin, Landscape Architecture magazine; "Ecological Design in Landscape Architecture," Landscape Architecture magazine; and "The Jerusalem Seam Plan," Progressive Architecture magazine.

Mr. Johnson's education includes a Master of Landscape Architecture from Harvard (1982), and a Bachelor of Landscape Architecture from Utah State University (1976).

Richard W. Shaw, BLA '72, is a principal in the office of Design Workshop, in Aspen, Colorado, along with **Joe Porter, BFA '63**, and **Don Ensign, BFA '63**, both of whom have been recognized as outstanding alumni previous years. Richard is a Logan native, the son of USU Professor Emeritus Richard J. Shaw, of the Department of Biology. Leaving his Cache Valley upbringing behind, Richard went to work at Brauer and

Associates in the Minneapolis area. He received an MLA at the Harvard University Graduate School of Design, where he won the Jacob Weidenmann Prize in 1976. He joined the fledgling firm of Design Workshop in 1976, shortly after its opening in Aspen, and has played an instrumental role in its development as one of the top landscape architectural firms in the country.

Richard has gained recognition for his work on a wide variety of project types and scales, ranging from major year-round resort communities to single family residential design. A sampling of projects on which he has managed principal design responsibility include the Aizu Resort, Fushima Prefecture, Japan; Aspen Mountain Base Redevelopment, Colorado; Baqueria Beret, Pyrenees, Spain; Blackcomb Resort, Whistler, British Columbia; Canyon Village Redevelopment, Yellowstone National Park; the Estrella Resort, Goodyear, Arizona, and the North Lake Tahoe Tourism Plan, Lake Tahoe, California. Richard has won numerous honors and awards for his work with the office, including a Canadian Society of Landscape Architects (CSLA) National Merit Award for the Banff Downtown Enhancement Plan, 1993, both the CSLA and ASLA National Merit Awards for the Bow Canmore Corridor Visual Impact Assessment, 1991, and the CSLA National Merit Award for Kananaskis Village, 1989.



ALUMNI NEWS

Richard V. Giamberdine, BS'61, passed away on March 6, 1995, from cancer. Rich had recently retired from the National Park Service, where he had held the position of Senior Landscape Architect at the Denver Service Center. Rich had been with the NPS since 1966, and was responsible for numerous major projects and initiatives during his 29 year public career. A great source of pride for Giamberdine was his work at Columbia River Gorge, where as project manager, he was instrumental in attaining its designation as the nation's first official Industrial Heritage Project in southwestern Pennsylvania, which use an innovative approach to combine scenic and historic preservation with economic renovation in a depressed region. Among recent efforts, he was responsible for the NPS Sustainable Design Initiative, and was landscape architect for the Beringian Heritage International Park with the Russian Republic.

Richard was recognized as Distinguished Alumnus of the LAEP Department in 1992. He had fond memories of Logan and his years at Utah State University, and wrote that he was "thrilled to receive such a distinction from my Alma Mater, the place and the people that exposed me to the challenges of a unique, distinctive, and fulfilling profession". Rich will be missed by all the past and present Aggies fortunate to have known him; classmates, faculty, and students, with whom he shared his infectious enthusiasm for landscape architecture and life.

The Department is working to establish an endowed scholarship in memory of Richard. Gifts can be sent to the Development Office, UMC 1420, Utah State University, Logan, UT 84322-1420, and should be noted 'in memory of Richard V. Giamberdine'.

We love to hear from all of you out there in the real (unreal) world. Keep us posted on your whereabouts and "whatabouts", and we'll do our best to pass the news along via this vehicle to your fellow alumni. This year, as noted elsewhere, the MLA program received a 5 year accreditation review by the ASLA Board of Landscape Architecture Accreditation (LAAB). As part of the Self Evaluation Report prepared by the Department for the LAAB review, a mailing was sent to USU MLA recipients, in an attempt to update our files on alumni accomplishments. A summary of many of those responses is included below, along with news received from many others through correspondence.

Vernon D. Smith, BS'50, has been inducted into the National Landscape Association's Hall of Fame. Vern's family business, Millcreek Gardens, is located in Salt Lake City.

Wai Chan Fung, BLA'72, and **Heuh Terng Phang**, BLA'90, are working together in the Parks and Recreation Department for the Republic of Singapore.

Roger Fickes, MLA'73, is the Director of the Pennsylvania Bureau of State Parks.

Richard "Buck" Sutton, MLA'74, is Associate Professor for the Horticulture Dept. (Landscape & Design) and Graduate Faculty Member at University of Nebraska in Lincoln. He also is principal of Richard K. Sutton, ASLA.

Robert Scott, MLA '74, has been appointed Vice President for Woodward-Clyde Consultants, an international environmental consulting firm with more than 50 offices worldwide. He is presently managing a 5 year contract for all environmental technical support services for the Western Area Power Administration, extending across 15 western states. Robert married Judy Logel in Queenstown, New Zealand, in 1990. He has one son who graduated from the University of Utah in 1994.

Carol Mayer-Reed, MLA'77, principal, Studio Mayer/Reed, Portland, Oregon. Two of Carol's projects were illustrated in May, 1995, issues of Landscape Architecture, featuring "Women and the Profession".

Blaise Grden, MLA'78, is a Landscape Architect with the U.S. Army Corps of Engineers, in Walla Walla, Washington. His responsibilities include the role of Master Plan Program Manger and GIS Coordinator for Planning Applications.

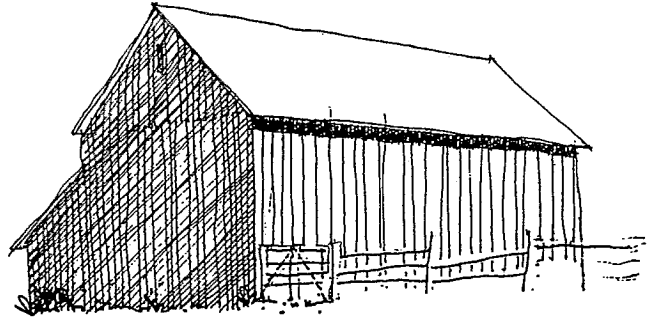
Ken Brooks, MLA '78, is an Associate Professor in Regional & Community Planning at Kansas State University where he continues to teach Computer Aided Design Application and Graduate Research. He has recently finished a project funded by the Kansas Water Office and the US-EPA to promote wetland and riparian areas planning and conservation. Ken is also Regional Director for C.E.L.A., and President of Sigma Lambda Alpha.

William Carman, MLA '79, is Urban County Park Designer for Lexington, Kentucky. He also is consulting landscape architect/planner for various municipalities and companies. William won a Merit Award from the Kentucky Chapter of ASLA and a Governor's Award for Excellence in Park Design for his work on The Freedom Trail.

Rick Barrett, BLA '79, has been hired as Senior Associate and Project Manager with ROMA, a San Francisco urban design and development planning firm.

Mike Kania, MLA '79, is U.S.F.S. staff officer with the Columbia River Gorge National Scenic Area, where he supervises a staff of 19 permanent and 50 temporary positions.

David Garce, BLA '80, of Dave Garce Associates, Santa Clara, California, is President of the American Indian Council of Architects and Engineers.



Greg McPherson, MLA '81, was lead scientist on the Chicago Urban Forest Climate Project, and is now Project Leader for the USDA Forest Service's Western Center for Urban Forest Research, in Davis, CA. His research focuses on measurement and modeling of urban forest benefits and costs, with particular emphasis on energy and water use.

Perry Blake, BLA '82, is co-founder of the architecture and production design firm Blake+Au in Los Angeles. His non-traditional career has found him designing sets and art for TV commercials (Nike, Coke, Toyota, Mitsubishi) and music videos. He was Production Designer for the short film *Birch Street Gym*, which received an Academy Award nomination for an award in the Live Action Short category. This past year, he worked on his first feature film, *Billy Madison*, for Universal Pictures.

Larry Headley, MLA '82, is doing visual imagery work in Santa Barbara California. Larry visited the LAEP Department this spring, giving presentations on recent projects.

Joe Donaldson, MLA '83, is currently practicing landscape architecture with Jones & Stokes Associates, Inc. Environmental Planning and Natural Resources Sciences, in Sacramento, CA. The firm has just won a state wide APA Award for a project in Gilbert, AZ, for Best Environmental Project. Congratulations to Joe on his recent marriage to Margaret Nash.

Julie Johnson, BLA '84, has accepted a teaching position in the University of Washington's Landscape Architecture Department, to begin in September. In the meantime, she is in the midst of a 10 month around-the-world tour, funded by the Rotch Travel Scholarship received by her husband José, to study architecture abroad.

Martin Maca, MLA '84, is Assistant Professor in the Department of Horticulture, Forestry, Landscape and Parks and Recreation, at South Dakota State University, Brookings, SD.

Chuck Houghton, MLA '84, is Planning Branch Chief for Region 1, U.S. Fish and Wildlife Program. Chuck was recognized with a Special Achievement Award for his work on Ecosystem Management in Region 1 (WA, OR, ID, CA, NV, HA), which has influenced the Service's national effort on ecosystem management.

Shannon Heath, MLA '84, is currently working as Assistant Environmental Contaminant Specialist for US Fish & Wildlife

Service, in Helena, Montana. Shannon has recently been married.

Ted Cook, MLA '85, is presently a Ph.D. candidate in Landscape Planning at the Landbouw Universiteit-Wageningen, The Netherlands. While teaching at the Department of Planning at Arizona State University, he also practices landscape architecture/planning in Mesa, AZ.

Bob Moses, BLA '85, writes that he is "alive and well in the Pacific Northwest", where he is operating a small design/build outfit and "having a great time."

Cari Goetcheus, BLA '87, is completing her thesis requirements for an MLA in historic landscape preservation at the University of Georgia, Athens. Last summer, Cari received a preservation internship through the U.S. Committee of the International Council of Monuments and Sites, to work in Portland, where she was involved in preservation and interpretation efforts on Muskau Park.

Jill Cowley, MLA '87, is Park Planner/Cultural Landscape Specialist for the US National Park Service Southwest Regional Office in Sante Fe, New Mexico. Her publications include "*The O'Keeffe Landscape: Georgia O'Keeffe's Relationship with the Norther New Mexico Landscape*".

Kent Baker, MLA '87, has returned to Cache Valley, where he is self-employed. Prior to his return, Kent worked two years for Carol R. Johnson and Associates, Cambridge, Mass., and for two years with Land Design North, in Anchorage, Alaska.

Sue Nordstrom-Schernor, MLA '89, is a landscape architect with National Park Service Denver Service Center, where she is with the Central Team Planning Section. Sue visited Logan last fall, and shared her expertise with the Recreation Design Studio.

Mike Ferrara, MLA '89, currently lives in Escondido, CA, where he works as an Assistant Landscape Architect for the California Department of Transportation.

Susan Crook, MLA '89, is currently principal of Timpanogos Land Design, in Salt Lake City, UT. She is also Landscape Coordinator for the SLC Habitat for Humanity and is editor for *Trukline*, a newsletter for the Utah Nursery and Landscape Association (UNLA).

Gary Weiner, MLA '89, is currently the National Rivers Program Manager for the Rocky Mountain Region of the National Park Service. Gary received both a Quality Performance Award and a Special Achievement Award for his work from the Park Service in 1994.

Linda Perelli-Wright, MLA '90, is Principal Planner with Fitzgerald and Halliday, in Hartford, CT.

Mike Warner, MLA '92, is manager for Environmental Services with Power Engineering, Hailey, ID.

Rob King, MLA '92, has been with Clemens Associates since moving to Ketchum, ID, in 1990. He also serves on the Sun Valley Elkhorn Association, Inc. Architectural Design Committee.

Kevin Draper, MLA '92, has been serving as the Forest Landscape Architect for the Manti-La Sal National Forest for the last two years. In addition to his routine responsibilities, Kevin has been serving as the Forest Recreation Program Manger, Team Leader for the Forest EA's, and Project Manager for the Huntington and Eccles Canyon Scenic Byways Project.

Liza Stacishin, MLA '93, is residing and practicing architecture and landscape architecture in LaGrande, Oregon.

Dave Anderson, MLA '93, and **Anne Spranger**, MLA '93, are working with USU Extension, where they have completed a site inventory and analysis, concepts, cost estimates, and master plan for the new Utah Botanical Gardens in Kaysville, Utah. This new 100 acre-plus facility will replace the existing USU gardens in Farmington.

Paul Larson, MLA '93, is Principal Planner for West Valley City, UT.

Liza Stacishin, MLA '93, is residing and practicing architecture and landscape architecture in LaGrande, Oregon.

Dave Anderson, MLA '93, and Anne Spranger, MLA '93, are working with USU Extension, where they have completed a site inventory and analysis, concepts, cost estimates, and master plan for the new Utah Botanical Gardens in Kaysville, Utah. This new 100 acre-plus facility will replace the existing USU gardens in Farmington.

Paul Larson, MLA '93, is Principal Planner for West Valley City, UT.

Dick Johnson, MLA '94, is currently Senior Environmental Analyst for the Wyoming Department of Environmental Quality in Cheyenne, WY. He is also involved in Urban Storm Water Management & Design for Storm Water Pollution Reduction.

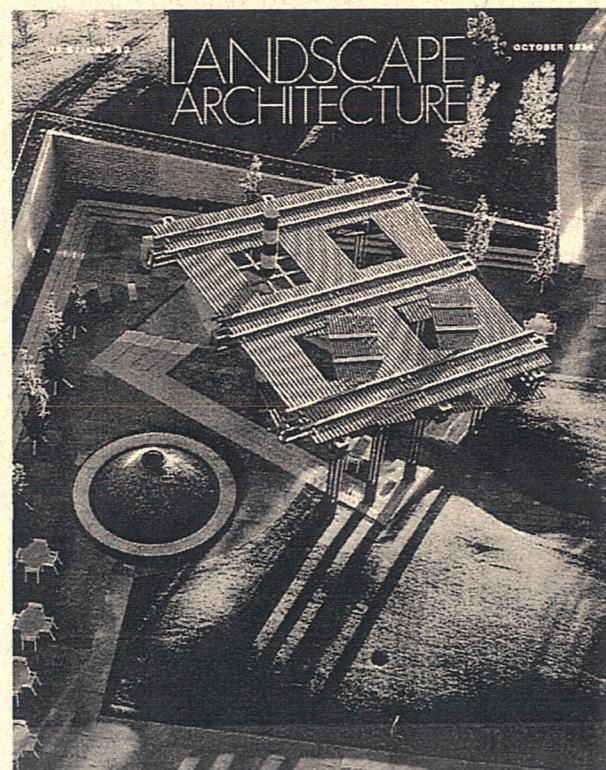
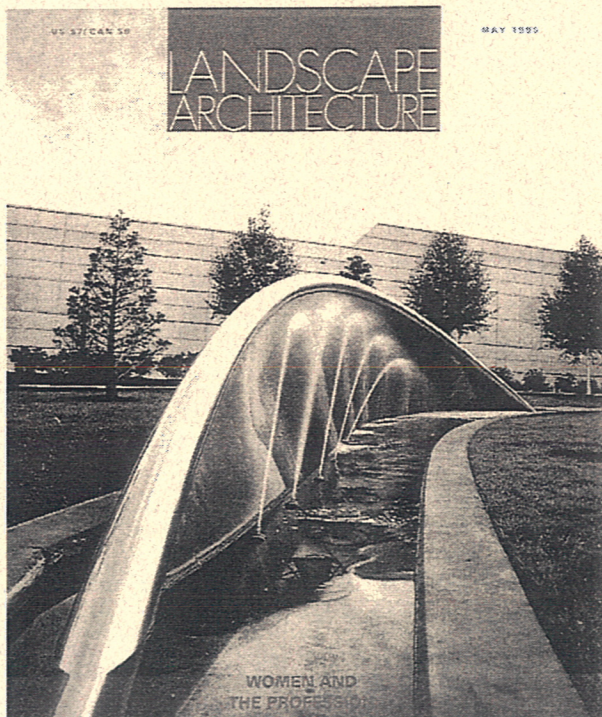
Rob Sweeten, BLA '94, is a landscape architect with the BLM in Moab, UT. Rob paid us a visit during LAEP Week, and shared his first year experiences with interested students.

Too much togetherness in the studio? The following LAEP couples have "tied the knot" of matrimony. And to think that students actually complain about the all-nighters!

Debora Chandler, BLA '92, and Mark Shepard, BLA '92.

Paul Valcarce, BLA '93 and Angie Brisendine, BLA '93

Jinger Paxman, BLA '94 and Joe Diaz, BLA '95.



Congratulations to our *Landscape Architecture Magazine* "cover alumni". The May, 1995 (left) issue of LAM sported the water feature and courtyard of the Hewlett-Packard Company's Vancouver offices, designed by **Carol Mayer-Reed, MLA '77, and Chris Ingalls, BLA '89, of Studio Mayer-Reed, Portland, OR.** The cover of the October (right) 1994 issue, featured the Great-West Life Center Plaza at the Denver Technological Center by **Todd Johnson, BLA '76, of CIVITAS.**

INSITES • 1995

editor • Michael P. Cunningham

faculty advisor • Michael Timmons

production • Ardith Poulson

cover illustration by Marilyn Feuerstein

misc. illustrations from Cassia County Design Guidelines, M. Timmons

Utah State
UNIVERSITY

Department of Landscape Architecture and
Environmental Planning
Logan, Utah 84322-4005

