

Utah State University

DigitalCommons@USU

inSites

Landscape Architecture and Environmental
Planning

1994

InSites, 1994

Utah State University

Follow this and additional works at: <https://digitalcommons.usu.edu/insites>



Part of the [Environmental Design Commons](#), and the [Landscape Architecture Commons](#)

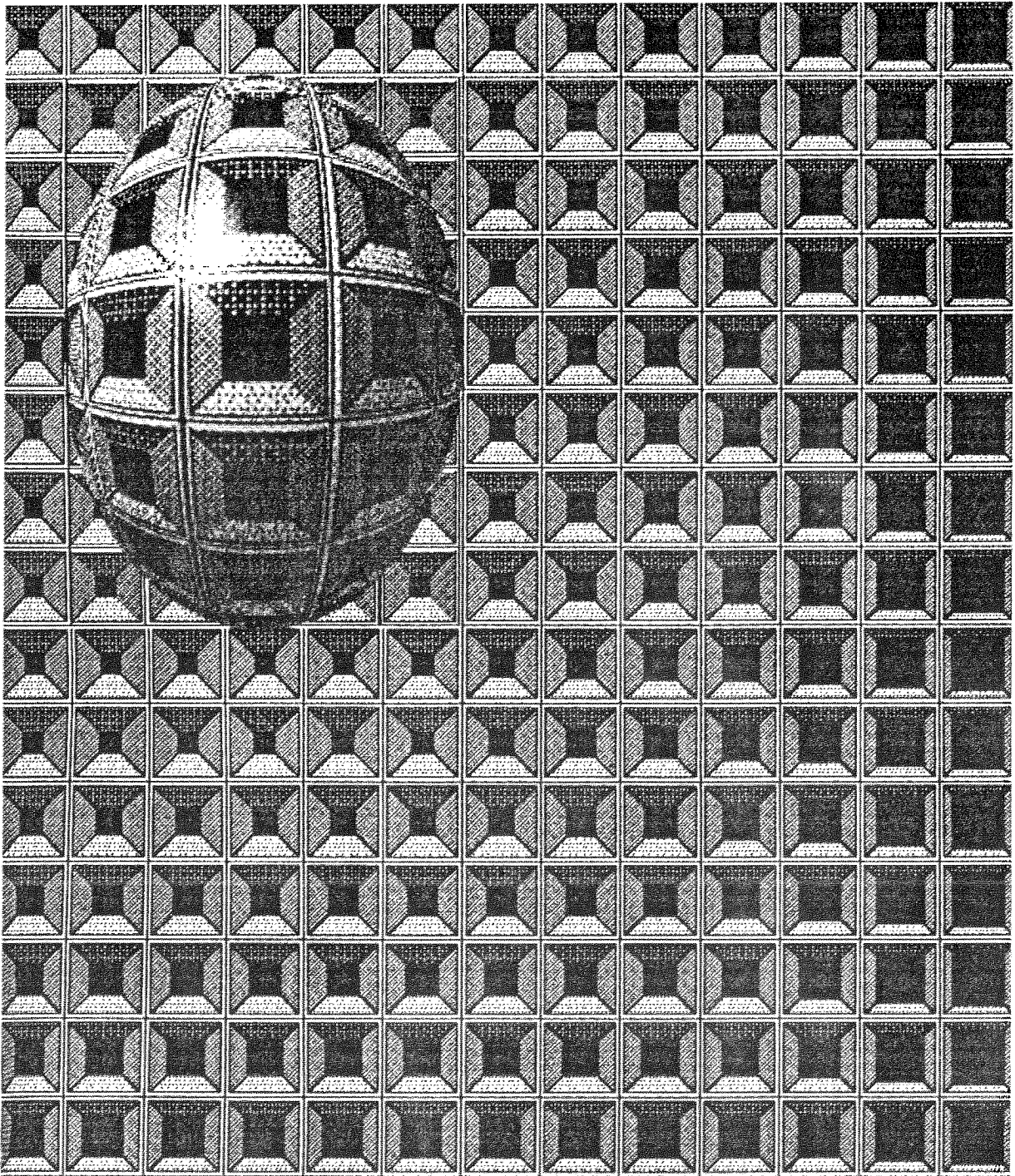
Recommended Citation

Utah State University, "InSites, 1994" (1994). *inSites*. 7.
<https://digitalcommons.usu.edu/insites/7>

This Book is brought to you for free and open access by the Landscape Architecture and Environmental Planning at DigitalCommons@USU. It has been accepted for inclusion in inSites by an authorized administrator of DigitalCommons@USU. For more information, please contact digitalcommons@usu.edu.



DEPARTMENT OF LANDSCAPE ARCHITECTURE
AND ENVIRONMENTAL PLANNING
UTAH STATE UNIVERSITY



INSITES 1994

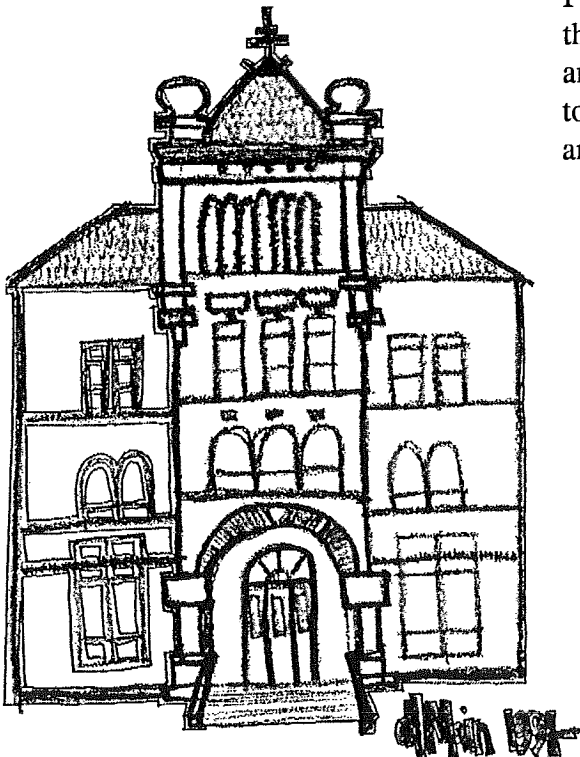
LETTER FROM THE DEPARTMENT HEAD

A major portion of the faculty's time this fall quarter was given over to the preparation and writing of the Undergraduate Accreditation Self Evaluation Report. The team visited in February and subsequently sent the department its preliminary findings for technical corrections. Although we will not be notified officially as to their recommendations, it does appear from the preliminary report that no serious shortcomings are inherent in the undergraduate program. The faculty will start the whole process over again this coming fall in anticipation of the fifth year review of the graduate program. After this, with the exception of the annual interim report for each program, we can look forward to a three-year rest.

In conjunction with the preparation for accreditation last fall, the faculty also discussed and recommended the formation of both an Alumni Council and an Advisory Council. The faculty believe that both these groups will prove very helpful in providing an outside perspective on current and future needs of the profession as well as sharing their perceptions of the strengths and weaknesses of the department. We are also pleased to note the participation of a number of our more accessible alumni (Salt Lake City and environs) within the program.

Annual sabbatical leaves enable the department to take advantage of experience and talents of individuals in both private and public practice. We have tended, with good reason, to utilize a number of our alumni with respect to these opportunities. Most of you are aware that Vern Budge has taken advantage of that opportunity this year to further investigate and integrate additional computer applications throughout various portions of the curriculum. John Nicholson will be on sabbatical next year, having received a second Fulbright Award, this time to be in residence at the Technical Institute of Dresden. Along with Professor Nicholson's continued international activities, we are currently hosting two students from the University of Ljubljana this spring quarter. All of us in the department value these international associations.

I would like to thank all of you who made contributions to the department this year. Your generosity is appreciated and we are encouraged by your support. Please keep in touch; we enjoy hearing from you. Needless to say, if you are in the area, stop in and spend some time with us.



CHRISTY CALVIN

Mrs E. J. Jett

COVER GRAPHIC--TODD SHERMAN

FACULTY UPDATE

LAURA MUSACCHIO

Our newest faculty member joined the staff in September 1993. Laura completed her MLA at the State University on New York at Syracuse, where she also received her BLA. She has worked professionally for several firms in southern California and New York, focusing on site design and planning, as well as wetland mitigation. Co-teaching Site Analysis Methods, Urban Design, Site Planning and Design, and Planting Design, Laura has had the opportunity to work closely with the undergraduate students--a challenging, yet enjoyable task. She has received a course development grant from the College of Humanities, Arts and Social Sciences to revise the LAEP 270 Site Analysis Methods class. She plans to use the resources to create an extended syllabus and to purchase supplies for the course.

MICHAEL TIMMONS

It's been another exciting year in the studio, with some fun and demanding projects to challenge the upper division students. The Junior Recreation studio was asked by the BLM to examine the area around the John Jarvie Ranch in Brown's Hole, along the Green River below the Flaming Gorge Reservoir. The class spent several days camped in an early October snowfall, studying the site and developing concepts which were later refined into recreational master plans and campground facility designs. Despite the soggy and cold conditions, everyone seemed to enjoy the experience. The same class created a playground design for the old Whittier School in Logan. A group which managed to save the landmark from the wrecking crew at the last minute is planning to construct the "winning" solution, designed by MLA student Cynthia Butler.

The Senior Urban Design studio focused on a 75-acre site at the interface between Logan and River Heights, along the Logan River. Labeled by some as the "prime development parcel" in Cache Valley, students grappled with issues of urban annexation, transportation and access, wetlands, recreational linkages, marketability, housing, commercial and office planning, historic preservation and reference, city entry image, architectural style and building massing, and more. Solutions were presented to the landowners, potential developers, and civic representatives, who are hopeful that the efforts will result in a collaborative, planned endeavor for this southern gateway to Logan.

Michael will be spending part of the summer on a research project with the National Park Service, the Idaho Department of Parks and Recreation, and the Cassia County (Idaho) Planning Commission, developing guidelines for development in and around the recently designated City of Rocks National Reserve. It should be a most interesting project, and will fund two graduate students to pursue spin-off thesis work.

JOHN ELLSWORTH

John recently returned from sabbatical, having spent the year volunteering with the US Forest Service and the BLM, as well as visiting Japan. His work with the Forest Service focused on fire management and scenic quality, while his BLM work concentrated on setting up a computer imaging system. He presented at the First Annual US Forest Service Landscape Architects' Workshop (Denver), and the Federal Land Management Agencies' Chiefs Conference on Travel and Tourism in Boise. His travels in Japan included Zen gardens, countryside tours, and the establishment of professional contacts with the Kyushu Institute of Design.

John is involved with the USFS as a member of the National Task Force on Visual Simulation and is leading the team on Legal and Ethical Implications. *Landscape Journal* has published an article co-authored by John and recent graduate Kurt Watzek in the Spring 1994 issue. The Utah Chapter of ASLA presented him with two awards, one for his computer imaging work with the BLM, and one for his work with Watzek on computer visual simulation. His ongoing research in Yellowstone involves repeat photography of areas burned in the 1988 fires, investigating the recovery (or lack thereof) of the scenic resources of the park.

VERN BUDGE

Vern has been on sabbatical this year, concentrating on refining his Autocad skills. He hopes to be able to more fully integrate this technology into the curriculum.

JOHN NICHOLSON

John spent last May with the exchange group in Slovenia. He gave a presentation in Ljubljana to the Yugoslavian equivalent of ASLA entitled "Computer Applications in Landscape Architecture - An American Perspective." During his stay he organized a five-day excursion to Florence and Venice for our nine USU students, taking full advantage of the proximity of fabulous historic cities in Slovenia's "back-yard."

John represented the LAEP department at the TEMPUS (an educational organization of the European Economic Community) workshop in Hannover, Germany. Participant schools included USU, University of Sheffield, University of Hannover, and the University of Ljubljana. The workshop included an excursion to the North Sea to examine Germany's recently created National Park system.

Next year will be John's sabbatical, and he is very honored to have received a Fulbright Fellowship at Germany's Technical Institute of Dresden. As part of the former East Germany, Dresden is now a boom-town of construction activity and new urban projects. This is his second Fulbright award. John will be involved in research, as well as in providing lectures and tutorials to students in computer applications.

DAVE BELL

Dave has been working on site development plans for a number of Utah communities, including a Main Street landscape plan for Gunnison now being installed. A new entry monument/sign for the city of Price is also under construction. Five ongoing projects involve the use of native/low water use plants and will serve as examples of water-conserving landscapes for the communities.

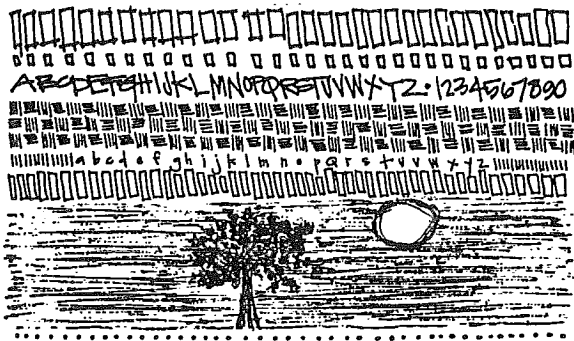
Master planning projects are being developed for Grand County, downtown Nephi, and Monticello City. Public workshops in "Issues and Values" identification have been completed for Grand County and a GIS data base is nearly complete. Inventory and analysis plans, as well as the first planning workshop, have been completed for Nephi, and alternative development plans are now underway. The planning process for Monticello began in March.

Dave is teaching LAEP 312, Construction Documents, this quarter. He has presented lectures on "The Planning Process" and "Unique Landscapes" to Master Gardener classes, and made several other educational presentations to various city and county councils.

JERRY FUHRIMAN

Aside from his teaching activities, the planning and design of interpretive facilities continues to occupy Jerry's time. Early last fall Jerry made a presentation entitled "The Planning and Design of Interpretive Environments: A Holistic Approach" at the CELA National Conference in Eugene, Oregon. During the past year he has served as a guest lecturer for the College of Natural Resources Interpretive Planning Program. He also presented a workshop in interpretive planning for the Annual USU Outdoor Recreation Shortcourse.

Jerry continues to be involved with the Design Communication Association and attended this year's national conference in Tucson, Arizona. "This association is a great combination of architects, landscape architects, and interior designers. Anyone interested in the visual communication of design should be very interested in this professional organization." Jerry is on the committee responsible for organizing next year's regional conference. The conference, tentatively planned to be held in Las Vegas, will focus on virtual reality.



CHRISTY CALVIN

CRAIG JOHNSON

Professor Johnson and former graduate students Kathlyn Collins, Dick Johnson, Paul Larsen, Madeline Mazurski, Sue Nordstrom, and Linda Perelli-Wright were recognized by ASLA with a Merit Award for the publication A Wildlife Conservation Manual for Urbanizing Areas in Utah at the national annual meeting in Chicago. The same folks were also awarded the Sheldon D. Gerber Merit Award for Excellence in Environmental Planning from the Western Planning Association at the annual meeting in Homer, Alaska.

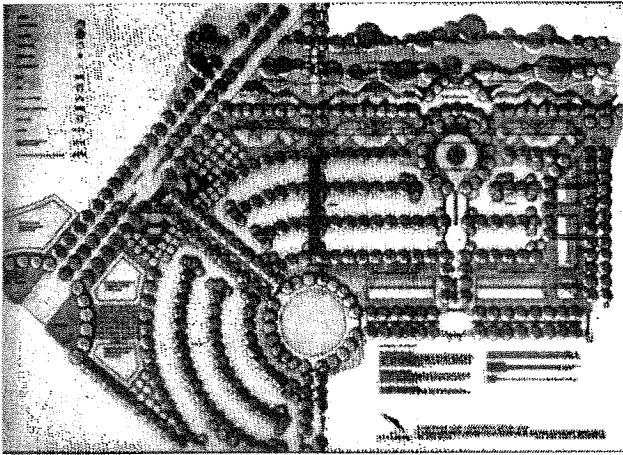
Craig continues to conduct research and publish articles about planning for wildlife in urban areas and landscape restoration. He has been invited to give a paper at the Wildlife Institute's Annual Meeting in Albuquerque and the National Urban Wildlife Institute's Annual Meeting in Seattle.

RICHARD TOTH

A majority of Dick's time has been spent with several university and department activities. Although the accreditation visit was a major investment of time, most of his energy has been given over to the university's Liberal Arts & Sciences Program. This program of study is sponsored by the Colleges of HASS and Science, and represents one of the best undergraduate interdisciplinary learning environments nationwide. As reported by the American Association of the Advancement of Science, "The Liberal Arts and Sciences Program is one of only several in the nation which represents some of the innovative interdisciplinary baccalaureate programs emerging in American Colleges and Universities." Dick is currently involved in teaching one of the fall quarter orientation courses, and he and Craig Johnson are offering for the first time this spring, the full capstone studio for students completing the cluster titled "Future Environments." Craig and Dick received a curriculum development grant last year to design and structure the studio.

In conjunction with the continuing international activities of the department, Dick will be traveling to the University of Sheffield in Great Britain to participate in the European interuniversity cooperation project entitled TEMPUS. The one-week workshop will focus on the future cooperation and student/faculty exchanges which may develop between the University of Sheffield, the University of Hannover, the University of Ljubljana, and USU. If the value and richness of these experiences continue at the same level as those shared by USU and the University of Ljubljana, we certainly have a fruitful future to look forward to in this discipline.

STUDIO UPDATE



ERIC AULESTIA

SENIOR CLASS

BEN PHILLIPS

The seniors started the year with John Nicholson's LAEP 410 class, Computer Applications. Projects included suitability mapping in Summit County (MapII), and a redesign for the Taggart Student Center (a familiar design locale for LAEP students) using both MiniCAD and Photoshop computer programs. Thanks to Nancy Brunswick, the T.A., we were able to get much needed help when John was away.

During the winter quarter, Mike Timmons and Laura Mussachio taught LAEP 411, "Urban and Community Design," which examined a 75-acre parcel of undeveloped land on the southern edge of the Logan Central Business District. This design project demonstrated the full potential of the seniors' design skills after four years in the LAEP program. The final presentation offered a wide range of possible solutions and was presented to area landowners. They seemed quite impressed with the students' work, which we hope was a sign that they might adopt some of the innovative ideas for actual implementation.

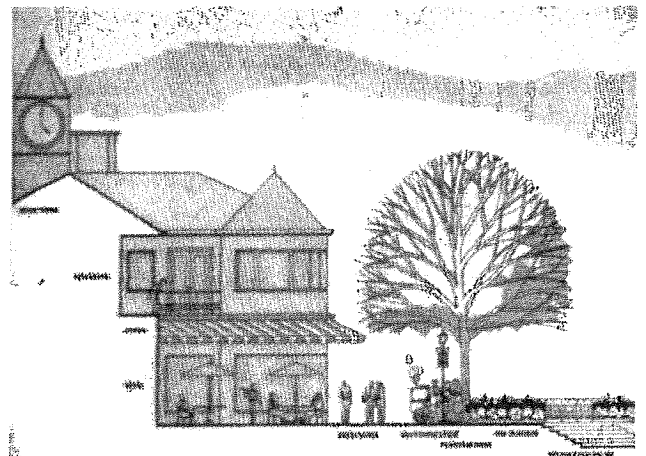
This spring quarter has brought a mixed bag. The seniors who had the opportunity to study in Slovenia last year are now taking Construction Documents with the juniors, while the others are enrolled in LAEP 412, "Emerging Areas of Landscape Architecture." This new course has two parts, the first being taught by Professor Ellsworth, concentrating on Visual Resource Management, and the second, led by Professor Johnson, emphasizing Landscape Ecology and Conservation Biology. In addition, five students are doing individual projects for Senior Design: Cynthia Nielson and Stefan Johannson are working on urban design projects for the City of Ogden, Jaysen Selley is doing a golf course design in Salt Lake, Jennifer Devore is developing a cancer recovery center, and Ben Phillips is working on a street beautification plan and urban forestry program for the City of Clearfield.

JUNIOR CLASS

PAUL KROMMENHOEK

The junior class, together with the second year graduate students, began the year with a recreational project for the BLM in Brown's Park. This project dealt specifically with the John Jarvie Ranch along the Green River, downstream from Flaming Gorge. Professor Timmons led the class on a three-day site visit, camping in an early autumn blizzard (one soggy group abandoned their tent and moved into the historic earth dugout frequented in its early days by Butch Cassidy). Final design proposals were presented to BLM officials, including LAEP alumni Reed Stalder. This project was followed by the design and construction of playground models for the Whittier Community Center, from which five projects were selected for public display. In LAEP 350, Planting Design, Professor Johnson directed study on a transect problem which concentrated on native Utah plants.

In conjunction with LAEP 361 (Construction) and LAEP 370 (City and Urban Planning), we prepared bus route proposals for the Logan City Transit District and USU Aggie Shuttle. We also worked with Robert Desmond (BLA '86) of Salt Lake-based Landscape Architects, on a design for the hypothetical Native American Academy for the Arts. The project included three phases: phase one required building placement and concept development, phase two included master planning of landscape spaces, and phase three included design development of key landscape spaces. Each phase ended with a jury review of the projects. In addition to LAEP professors, the juries included Robert Desmond, Jay Nielson of USU Campus Planning, and Jack E. Robinson, a nationally recognized campus planning and design consultant from Boston. Currently, the class is working on construction documents for the Academy, which will include grading, irrigation, planting, layout, dimensioning, details, and sections.



ERIC AULESTIA

GRADUATE NEWS

SOPHOMORE CLASS

CRAIG KUNZ

The sophomores began the year with nervous anticipation. Facing a combination of History, Site Analysis, and Construction, they expected to be swamped with work. They were. Nevertheless they muddled through, learning some very important lessons along the way.

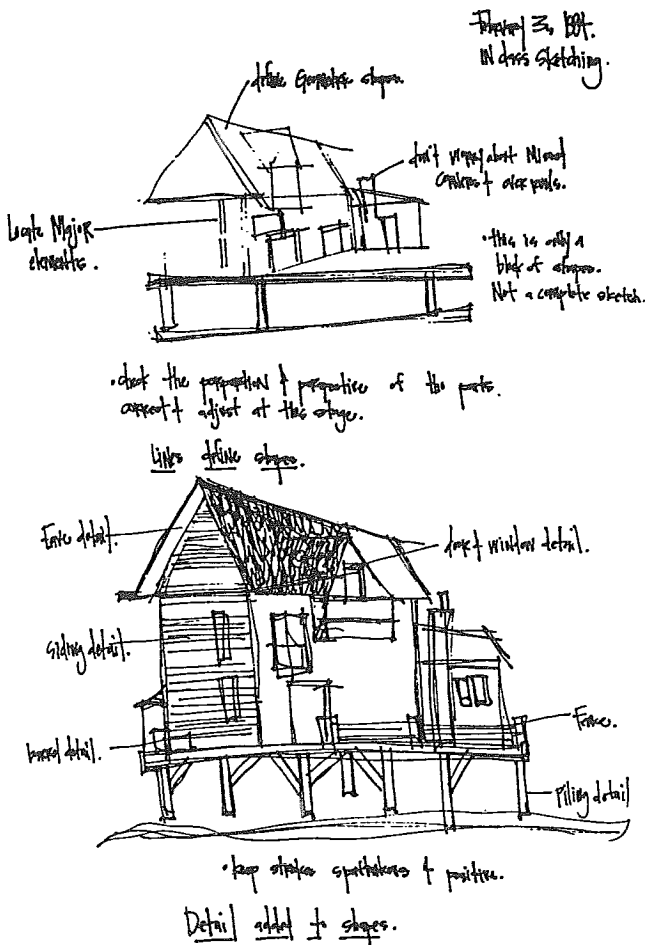
Winter quarter arrived, with site planning, more history, and advanced graphics demanding their attention. Now in spring quarter site design, the students are fighting spring fever to concentrate on Friendly Fred's Frozen Fish Fillet Factory, looking forward to finally finishing. "Hopefully, the phonetically funky 'F' will not find its way onto our report cards!" The sophomores are also involved in the study of historical architecture and learning how to design around it. Soon they will be refining their model building techniques, constructing residential designs in one of four climate regions. The year's end, with the prospect of matriculation into the upper division, is eagerly awaited.

RECENTLY COMPLETED THESES

- David Anderson "The Conceptual Design and Master Planning for the Fisheries and Wildlife Research Center"
- Kate Bartz "Differentiation of Riparian Cover Types Using Multispectral, Airborne Videography"
- Dick Johnson "The Value of Video Imaging as a Tool for Land Managers and Designers in Simulating Wildlife Habitat"
- Julianne Duncan "Clarifying the Concept of Sustainability and Its Evolving Role in Landscape Architecture"
- Christopher Sands "A Proposed Analysis of Planning Factors Within the Interpretive Planning Process"
- Chris Saunders "Future Water Demand in Cache Valley, Utah"

THESES IN PROGRESS

- Nancy Brunswick "Visual Preferences for Interpretive Services and Facilities in Logan, Canyon, Wasatch-Cache National Forest"
- Phyllis Bustamante "Heavy Metal Contamination from the Hard Rock Mining Industry"
- Sarah Creachbaum "Campground Planning and Design in Grizzly Bear Habitat in the Greater Yellowstone Ecosystem: A Comparative Analysis"
- Bart Dean "Recommendations for Design Response to Meet the Experience Expectations of Off Road Vehicle Users in the Little Sahara Recreation Area, Central Utah"
- Jeff Gilbert "Geographic Information Systems for Rural Communities"
- Mead Hargis "Resolving Recreation and Natural Resource Conflicts: Perspectives of Public Land Managers, Recreation Special Interest Publics, and Environmental Advocates"
- Beth Ludvigsen "The Social/Psychological Aspects of Rural Campground Design"
- Scott Mendenhall "Communication Effectiveness of Different Computer Generated Rendering Techniques: A Landscape Architectural Application"
- Beth Pyle "A Walk on the Wild Side: Conceptual Master Plan and Vegetation Management Plan for the Ogden Nature Center"
- Jeff Scarborough "Rights Analysis for Landscape Architects in Utah"
- Ronald Vance "Perception and Use: A Survey of Users in the Lakes Management Area, Kamas Ranger District, Wasatch-Cache National Forest"
- Ruth Wescott "Limiting Avian Species/Human Conflict: Design Guidelines for Trail Systems in Great Basin Riparian Zones"



ENVIRONMENTAL FIELD SERVICE PROJECT

BLUFF, UTAH

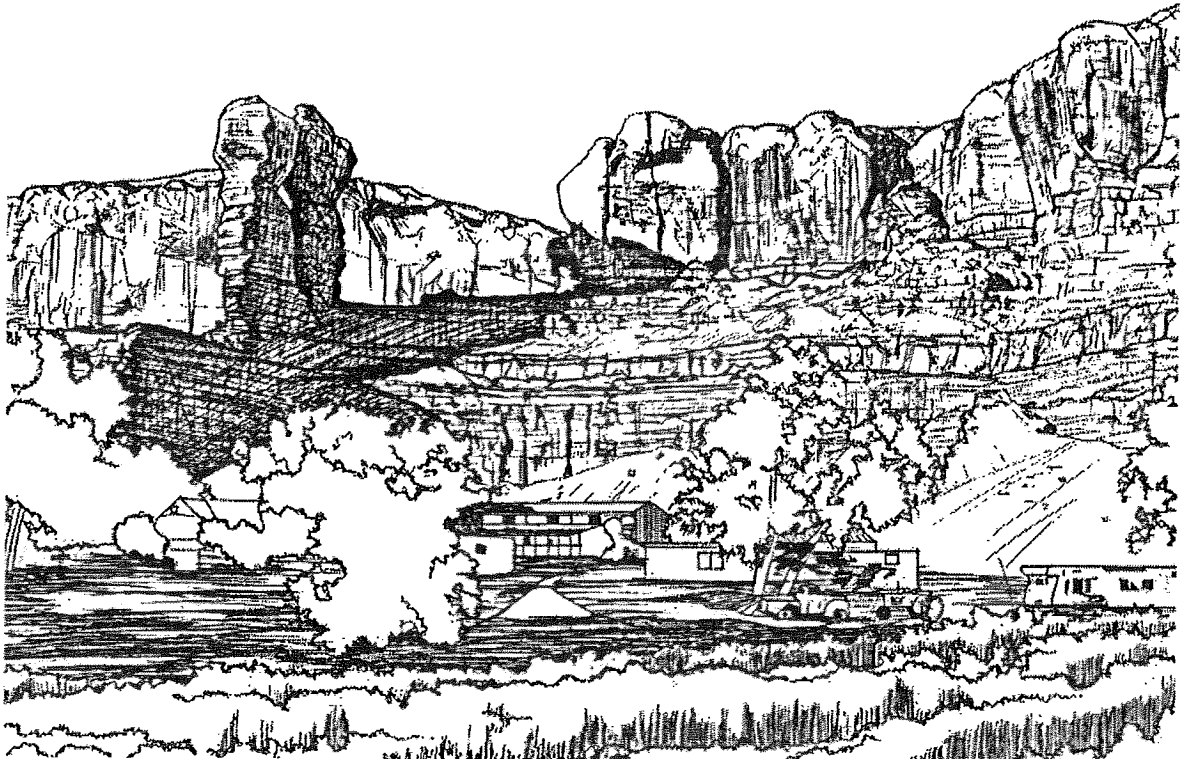
The 610, 611, and 612 graduate series studios have concentrated on growth and development issues in and around Bluff, Utah. Located in the southeast corner of Utah, Bluff is experiencing several growth and development problems. Residents are concerned that the character of the area may be negatively compromised by its increasing popularity. Historic pioneer structures, archaeological sites, and natural amenities have been lost already, and the picturesque, historic, and rural character of the area will be increasingly threatened as future growth occurs. With little or no planning, the spirit of place could be lost.

The 610 and 611 studios, led by professors Toth and Nicholson, conducted a study to explore and help direct the future of Bluff. The study is supported by the Design Arts Program of the Utah Arts Council. The pre-analysis phase included a site visit, opinion papers, and the investigation of case studies. A resident survey was conducted, and aspects of function and structure were explored utilizing a series of data maps including climate, geology, hydrology, soils, vegetation, wildlife, and historical and cultural features. The analysis phase included the development of activity models for agriculture, residential, tourism, and

commercial uses. Environmental models included linkages/physical patterns, views, unique features, public health hazards, and water quality. Three alternatives were developed in the synthesis phase, ranging from strict preservation and conservation to uncontrolled growth. A compromise position was suggested, with carefully monitored growth zones based on tourism and service industries.

The 612 studio, led by Professor Johnson, is focusing on a 450-acre floodplain along the San Juan River, south of Bluff. The site has been misused and abused over the last hundred years. Construction of the Navajo Dam in the 1960's restricted downstream flood events, periodic phenomenon vital to riparian ecosystem health. Once dominant stands of cottonwood trees are dying out and being replaced by salt cedar and Russian olive and the site's value for wildlife habitat is declining rapidly.

The students are now concentrating their research on potential causes for the declining vigor of the cottonwood stand, exploring possible solutions, including recommendations for its restoration and management. Design concepts for trails, blinds, overlooks, and interpretive facilities are being developed. Overall, it has been a complex and challenging year in a breathtakingly beautiful setting.



MARILYN FEUERSTEIN

SLOVENIA EXCHANGE

NANCY McLEAN

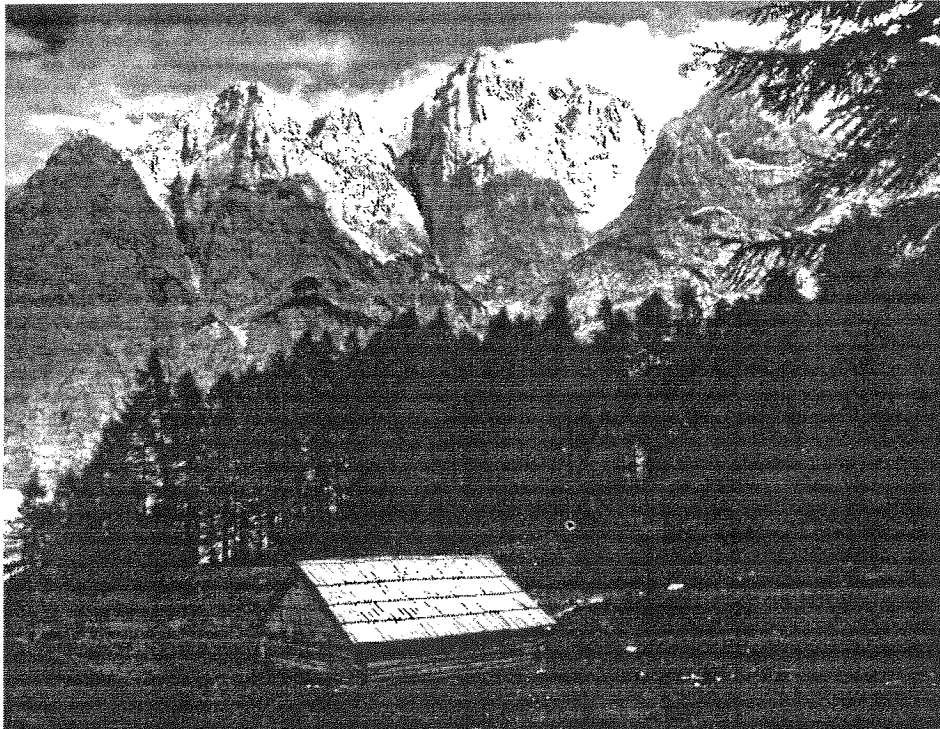
In 1991 the Landscape Architecture departments of Utah State University and the University of Ljubljana in Slovenia (former Yugoslavia) began a student exchange program. The exchange has been partially funded by the Samantha Smith Foundation, affiliated with the United States Information Agency. In 1992 a group of Slovenian students visited Logan, and nine USU students spent the 1993 spring quarter in Ljubljana. This exchange encouraged involvement between Slovene and American students on various projects, including a green system for the municipality of Ljubljana. The goals of this project were to unify and beautify the city through a cohesive open space system. Another project involved a four-day workshop for the proposal of a ski area and various recreational opportunities to help promote tourism in the Slovenian Alps.

Aside from the studio schedule, a great deal of time was spent traveling to various countries including Austria, Hungary, France, Italy, Germany, Greece, Switzerland, and the United Kingdom. Our travels proved to be one great adventure after another. In each city we found richness in history, art, and culture. The time was well spent and proved to be a wonderful educational experience.

Among other things, the exchange program has encouraged stronger international relations and long lasting friendships. This spring quarter we are honored to have Matej Kucina and Marjeta Velepec, two more Slovenian students, with us. The following is a note from our friends:

Our names are Marjeta and Matej, we are from Slovenia and we are sending our love to everyone. Have we been excited about our study visit to America? Of course! Our first big step was the fifteen hour flight to Salt Lake City. We were crazy happy to see our friends from last year-- Bart, Tyler, Hugh, Greg, Nancy B., Nancy M., Darrin, Justin, Heather--we hadn't expected to see them so soon. We had many big questions before we arrived--What is life in America like? What are the American students like? What is the Landscape Department like?...and a thousand other questions which are in your head when you are young students visiting a new country for the first time. The answers?--We are satisfied, we like America, the American students are great, so are the professors, and we are enjoying our classes here. The San Francisco trip has been the most memorable experience so far, and we are looking forward to seeing southern Utah soon.

HELLO!



NANCY BRUNSWICK

SPRING BREAK FIELD TRIP: CALIFORNIA

Professors Nicholson and Timmons led a group of students on a field trip to Sacramento, San Francisco, and surrounding areas this spring. The four day schedule was full to bursting, but the trip was excellently planned and orchestrated, resulting in a fantastic experience for all involved. There were people to meet us at almost every project we visited, and the scope of works we saw was incredible.

Sacramento highlights included a visit to the offices of Jones and Stokes (where we met with Joe Donaldson, USU MLA '82), Lincoln Plaza roof gardens, Capitol Mall, K Street Mall, and Village Homes. In San Francisco, we stopped at Peter Walker's office, the Sutro Baths, Golden Gate Park (including the Presidio), and the Sasaki Associates office. The following day, Michael Smiley of Sasaki took us on a walking tour of urban spaces, including the Levi Strauss Plaza, Pier 7,



the Hyatt Regency Atrium, and the Crocker roof garden, among many others. The students were especially impressed by Sasaki Associates work in planning a new greenway and public transportation system in the Embarcadero area, where the freeway was decimated in the recent earthquake.

Next was a tour of San Mateo County, where we saw the Bicentennial Plaza and Plaza Park in San Jose, Foothills College and the Portola Valley Ranch in Los Altos Hills. A final stop in Palo Alto contrasted the modern Byxbee Park, a land-fill reclamation by George Hargreaves, with, quite appropriately, the heart of Stanford University, designed by Olmsted. At Stanford we were hosted by Charles Carter, USU BLA '79, of the Campus Planning Office. All of this in four days! Many thanks to all involved.

VISITING SPEAKERS

Carl Steinitz: "Graduate Study at Harvard"

Gerald Smith: "Landscape Architecture in Australia"

Robert Desmond: "Evolution of Design Theory"

Robert Thayer: "Gray World, Green Heart:
Landscape in the Age of Technopoly"

Scott Van Dyke: "Graphic Methods"

Dayton Reuter: "Wetlands in Land Development
and Site Design"
Workshop--"Wetlands Planning and Design:
Mitigation, Restoration, and Creation"

Gerald Brown: "Office Projects"
(Carol Johnson Associates)

Jack Robinson: "Institutional Campus Planning"

Frank Ching: "Design Fundamentals"
Workshop--Graphics

Clark Ostergaard: "The Changing Role of Landscape
Architects in the US Forest Service"

Eloise Sahlstrom: "Licensing and Employment
Opportunities for Recent Graduates"

Mary Parkin: "Experiences With the US Fish and
Wildlife Service"

MORRIS TRAVEL FELLOWSHIP

Graduate student Julianne Duncan visited the North Sea region last summer, courtesy of the Morris Travel Fellowship. It was a fantastic adventure, full of discovery and interaction. The trip began in Scotland, where she visited Findhorn Village, "a global ecological community." The residents experiment with environmentally sound building strategies, holistic medicine, regional reforestation outreach, and spiritual development. The community was founded in the 1960's by three visionaries who claimed almost supernatural success with their extraordinary gardening techniques. An alternate interpretation was offered by a Welsh forester whom Julianne encountered in the Glasgow bus station. He claims that the garden's siting over an old bomb dump provided the nutrient boost necessary for the phenomenal growth in Findhorn's cabbages. A Highland mystery, all in all.

On a more serious note, the major destination for the journey was the Waddensea Wetland Area, a 200 mile stretch of coastland shared by The Netherlands, Germany, and Denmark. Ten years ago, the three countries agreed to



manage the region as a single entity, rather than a series of politically bounded segments. Investigation revealed that although the agreement was made with the best of intentions, management still lacks the unity and consistency desired by many people who are concerned about the health of this crucial ecosystem. Many environmental organizations are

still pressing for more stringent use and pollution regulations. In general, however, the public attitude toward polderization, or the creation of land from the sea, is shifting toward a preference for more natural ecosystem oriented management. Julianne and Professor Johnson co-authored a poster presenting the Waddensea Area at the 1993 CELA Conference in Eugene, Oregon.

Final notes

JULIANNE DUNCAN and impressions: the

European public transportation system is outstanding, bike paths proliferate, river corridors running through towns are treated like the treasures they are, and urban park design is characterized by much greater plant diversity and wildlife habitat than their American counterparts. The people are helpful and pleasant, and the food and drink isn't bad either!

BULLETIN.....

NEW LAEP DEPARTMENT PHONE NUMBERS

Front Desk	797-0500
Ardith Poulsen	797-0501
Richard Toth	797-0502
Fax	797-0503
John Ellsworth	797-0504
Laura Musacchio	797-0505
John Nicholson	797-0506
Craig Johnson	797-0507
Vern Budge	797-0508
Jerry Fuhrman	797-0509
Mike Timmons	797-0510
Dave Bell	797-0511
Graduate Studio	797-0512

ASLA NEWS

FALL 1993. During the past year the ASLA officers of the USULAEP Chapter completed a successful and informative variety of activities involving both the students and faculty. The year's first activity was a service project, in which we worked on the maintenance of an elderly gentleman's yard. A small crew showed, but a lot of work was done and a lot of doughnuts were consumed. Thanks to Mr. Selley for the opportunity and for his donation to the department. A Christmas party was held at Hugh and Greg's house, where Ruth W. walked off with the Golden Candy Cane award for the most interesting tree ornament. Fall quarter ended with the traditional coffee break, cookies supplied by Ardith. Thanks again, Ardith!

WINTER 1994. Winter quarter brought reminders of impending graduation. "How do I prepare for the job market?" was the question on many students' minds. Justin Hamula and Hugh Morton arranged a portfolio and resume workshop. Alumni Steve Stettler, Jay Nielson, and Robert Desmond shared their ideas and advice with us. Thanks to all involved; maybe we'll find work after all!

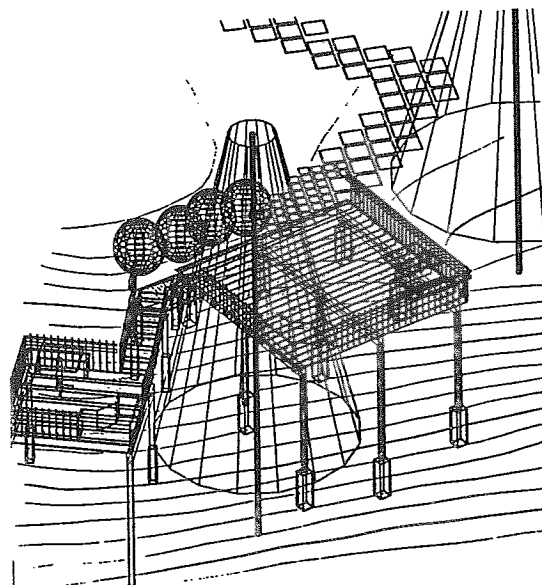
SPRING 1994. Congratulations to the eight students who presented their work to the ASLA Utah Chapter Executive Council, receiving either Honor or Merit Certificates for their efforts. A special thanks to the Council members who endured the cold pizza and hours of presentations. ASLA-sponsored guest speaker Gerald Brown, USU BLA '73, shared slides of his work done with Carol R. Johnson's office, as well as advice on presentation and interview techniques. The always popular LAEP week will include golf, softball, and BBQ, along with three guest speakers. Frank Ching will offer a graphics workshop, Bruce Jorgensen will conduct a workshop dealing with correctional facility design, and Bob Ross will speak, as well.. We appreciate everyone's participation and wish next year's officers GOOD LUCK!

1994-1995 ASLA STUDENT OFFICERS

President	Scott Peters
Vice President	Berry Ellison
Secretary	Amy Rawlinson
Treasurer	Jennifer White
Activities Representatives	Mark Malstrom & Justin Hamula
Graduate Representative	Jacqueline Hoffer
Senior Representative	Kim Hunter
Junior Representative	Roger Monson

DONORS: THANKS TO ALL!

Kurt Altvater	Gerald F. Kessler
John M. Andrasko	Rob King
James Arp	R. Darrell Kornegay
Todd Myron Bagley	Michael & Barbara Lamb
James Barbieri	Dominick LoVerme
Anthony Mathew Bauer	William F. Lye
John L. Blackburn	Eric & Terry Lyman
Jon & Faye Booth	Stuart MacDonald
Kenneth R. Brooks	E. Gregory & Adair McPherson
Terrall Budge	Joseph Devrl Mills
Vern J. Budge	Robin C. Muckey
Donald W. Campbell	Jenny Nelson Neilsen
Jeffrey L. Chase	Kent S. Pantone
David A. Christensen	Shelley Pilparinen
Walter Edwin Cole	David M. Price
John W. Corbett	Reliance Insurance Companies
Robert W. Cushman	Robert & Betty Robertson
Jeffrey Datwyler	Ronald & Julie Salisbury
Charles A. Everson	Allen L. Scott
Roger Fickes	Robert G. Scott
Debbie Gibson	D. Paul & Gloria Skanchy
Benjamin Hunter Gifford	Dale & Cynthia Smith
Blaise G. Grden	Janet L. Streifel
Margaret Ann Hack	John Donald Tarter
Michael & Christine Hamberlin	David M. Tibbetts
Ronald A. Heiden	Denton D. Turner
Warrick G. Hoopes, Jr.	Kevin B. Twitchell
Robert & Jeanne Hoover	Michael S. Varley
Mark & Laurie Jarvis	Don, Jr. & Rosemary White
David Jensen	Gary Woodward
Terry Lee Johnson	Ronald & Colene Yates
Paul & Shannette Keeler	



SARAH URAM

ALUMNI NEWS

Clark Ostergaard, BFA '64, received an ASLA Public Practice Award, Ecosystem Management Category, 1994, for his stream rehabilitation work in Mill Creek Canyon, near Salt Lake City.

Richard Sutton, MLA '74, has returned to his teaching responsibilities at the University of Nebraska, following a sabbatical at the University of Wisconsin, where he completed coursework for his PhD.

Marsha Lee, MS '76, is with the office of Decker/Perich Associates, in Albuquerque, NM.

Roger Sunada, BLA '77, until recently a landscape architect with the U.S. Air Force, is now a Quality Manager with Integrated Systems Engineering, in Logan.

Charles Carter, BLA '79, is the Stanford University Campus Planner for Community and Environmental Planning.

Steve Moore, BLA '80, is a representative for the Rainbird Corp., and is based with Mountain States Supply in Salt Lake City. He conducts irrigation training seminars, and recently worked with the LAEP irrigation design course.

John Mahoney, BLA '81, is the State Comprehensive Outdoor Recreation Planner for the State of Wyoming. He also serves as the Mid-Continent Regional Representative for the National Association of State Recreation Planners.

Greg McPherson, MLA '81, has moved to Davis, CA, where he will head a USFS urban forestry research program at UC Davis.

Joe Donaldson, MLA '82, is with the environmental planning firm Jones & Stokes, in Sacramento, CA. He has been involved with significant wetlands mitigation and restoration work.

Keith Maas, BLA '82, is a partner in the Logan-based firm Geo/Graphics. **Tracy Douhett Maas**, BLA '82, has her own landscape architectural practice in Logan.

Doug Waters, BLA '82, is with the Missoula, Montana, Parks and Recreation Department.

Rulon White, BLA '82, is self employed in the landscape industry in Las Vegas.

Mike Schafer, BLA '83, has recently taken a position with the City of Colorado Springs Parks and Recreation Department, where he has been involved as the lead architect for a 30-acre, \$2 million sports complex, and on the master plan for the Garden of the Gods Park. Prior to moving to the public sector, Mike spent 10 years in private practice, master planning military installations around the world.

Steve Cooper, BLA '84, is with the China Hat Naval Munitions Depot, in California, where he has become very involved with xeriscape efforts.

Dave Tibbitts, BLA '84, is the owner/principal of New England Land Design, in Westford, MA. After eight years of practice, Dave has a "closet full" of installed projects, including recent riparian corridor restoration work.

Bruce Meeks, BLA '87, has opened Meeks and Associates in Westlake Village, CA. His correspondence included a pack of photographs demonstrating an impressive array of residential projects he has completed.

Kevin Johnson, BLA '88, is pursuing a Master of Architecture degree at the University of Utah.

Lee Skabelund, BLA '88, has been serving in a temporary teaching position in the Department of Landscape Architecture at Virginia Polytechnic Institute, Blacksburg, VA.

Scott Milovich, BLA '90, is a Reclamation Specialist with the Utah State Division of Oil, Gas, and Mining, assigned to their coal mining reclamation program.

Prashant Bhat, BLA '92, has just completed his MLA at the University of Pennsylvania.

Anne Spranger, MLA '93, is a landscape designer working with the Department of Plant Science at USU on the design for the new University Horticultural Garden in Kaysville.

Chris Sands, MLA '94, is an Environmental Analyst with Bio/West, in Logan.

USULAEP alumni from our class of '93 who have gone on to pursue graduate studies:

Jason Bench, Brigham Young University

Steve Siddoway, University of Idaho

Tsunee Tsurasaki, University of Pennsylvania

Gerald Brown, BLA '73, is a principal and Associate Vice President in the firm of Carol R. Johnson & Associates, Cambridge, MA. Gerry visited Logan in April, and shared numerous project experiences with students, including the ASLA Merit Award winning Massachusetts National Cemetery project, which he directed. **Randy Sorensen**, BLA '80, is also Associate Vice President with the firm, and is Director of CRJ Ecological Services, an environmental planning-oriented division of the office. Randy has been heavily involved with public housing and educational facility design, and is presently directing site planning efforts on a new \$95 million federal prison at Ft. Devons. He is serving as Chairman of the Environmental Committee of the Boston Chapter, ASLA. **Ruth Wescott**, MLA candidate, is also presently with the Carol Johnson firm.

Mark Johnson, BLA '75, was a member of the ASLA National Awards jury, 1993. He is a partner in the Denver firm, CIVITAS, along with his wife **Ann Mullins Johnson**, BLA '76, and **Todd Johnson**, BLA '76. Also with CIVITAS is **Kent Earle**, BLA '91. The firm recently completed two major projects in the Denver metro area: the Great Western Life Plaza and the Jefferson County Courthouse.

Mark Raming, MLA '82, has moved from Tucson to Salt Lake City as an environmental planner with SWCA. **Kathlyn Collins**, MLA '91, is also in SWCA's Salt Lake City office.

Jay Bollwinkel, BLA '87, has returned to the "Beehive State" following several years practicing in Merced, CA. Jay is with Socwell Swaner, in Salt Lake, where he joins **Sumner Swaner**, BLA '84, **Dave Socwell**, BLA '83, and **Lecinda Pierce**, BLA '90.

Brock Hill, BLA '93, joins **Scott VanDyke**, BLA '79, and **Alan Weaver**, BLA '80, at MGB+A Associates, in Salt Lake. **Jereck Boss**, BLA '93, has taken a position with Giles, Stransky, Brehms, and Smith, in Salt Lake City, where he joins **Bruce Jorgenson**, BLA '69.

The Alexandria, VA office of EDAW, is home to a number of Aggie LAEP'ers. **Brad Wellington**, BLA '79, is Vice President and Director of Operations. He has been in charge of electronic master planning in the office, and has developed an automated system for military base planning. **Laura Garibotti Wiberg**, BLA '78, is a Principal and runs the land planning and urban design studios in the Alexandria office. She is presently the principal in charge of the Disney Celebration project in Florida, a major planned community with architect Robert Stern. Laura's other recent projects have included the new Washington Redskins stadium EIS, and an urban design plan for the Louisville, KY historic district. **Walt Cole**, BLA '83, is a Senior Associate, and has also been working with the Celebration project. Walt has recently completed a 40-block streetscape plan for Virginia Beach and is the project manager for the new National Garden in Washington, D.C., for which EDAW won a national design competition.

USU LAEP has had a long history of providing the U.S. Forest Service with fine landscape architects. As just one indicator of how many of our alumni are with the USFS, **John Ellsworth**, MLA '82, (and current LAEP faculty member), provided a list of registrants at a recent USFS

Regions 4 & 5 Landscape Architects Conference in Reno, at which he was a presentor. Of the 53 Forest Service LA's in attendance from California, Oregon, Idaho, and Utah, 18 were "our people." From California came **Dale Buckstaff**, BLA '81, Stanislaus NF, and **Jeff Hammond**, BLA '80, San Bernadino NF. From Idaho were **Tom Streit**, BLA '68, Sawtooth NF, **Beth Ludvigson**, MLA '94 candidate, Payette NF, and **Bart Andreason**, BLA '75, Targhee NF. Registrants from Utah completed the list, including **Jared Barton**, BLA '93, Dixie NF; **Kevin Draper**, MLA '92, Manti-Lasalle NF; **Clark Ostergaard**, BLA '64, Wasatch-Cache NF; **Brent Hanchett**, BLA '62 and **Alan Baird**, BLA '61, Ashley NF, and **Ferrin Rex**, BLA '65, Fishlake NF. From the Uinta NF were **Larry Call**, BLA '65; **Kevin Shafer**, BLA '87; **Dave Hatch**, BLA '89, and **Dave Christenson**, BLA '89. Representing the Region Design Center in Ogden, where responsibilities include providing design services for a wide range of project types including recreation facilities, administrative sites, water and sewer systems, were **Lyle Gomm**, BLA '66, Region 4 Landscape Architect; **Chris Hartmann** MLA '89 candidate, and **John Rehmer**, BLA '76. Also with the USFS are **Susan Marsh**, MLA '80, Recreation Staff Officer on the Bridger-Teton NF, and **Sarah Creachbaum**, MLA '94 candidate, with the Shoshone NF, both in Wyoming.

*Send us your news...we'd love to hear about you, and include your profile in the next edition of InSites!
We are also attempting to build a file of alumni resumes...please send us yours!*

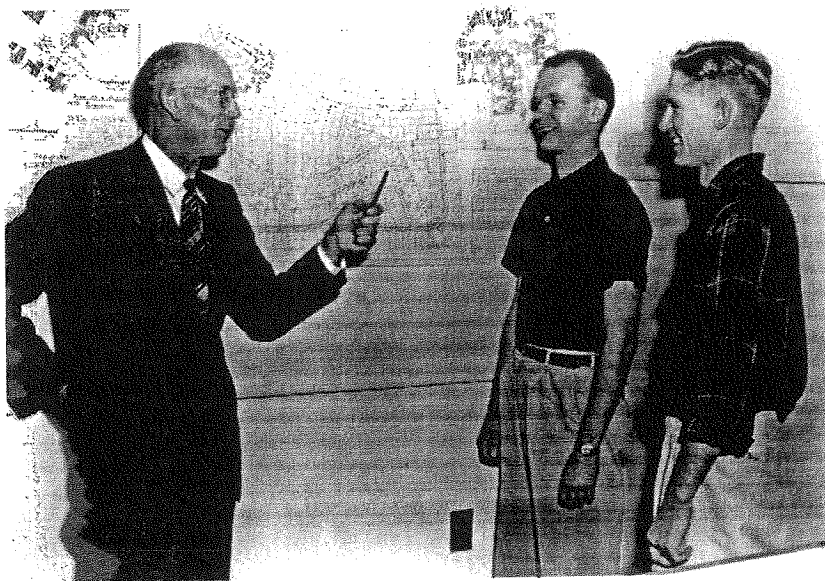
DISTINGUISHED ALUMNI AWARDS 1994

Spotlight on LAEP Alumni in the Federal Government

F. Reed Stalder, BS '55. After graduation Reed spent a few years in professional practice, then moved to the public sector, spending the last 32 years with the USFS and the BLM. He began his federal career at the Wasatch-Cache National Forest, supervising site design development and working on recreation programs. He then moved to the Forest Service Regional Office in Ogden, where he developed and directed a training program on landscape management and recreation planning for all of the region's resource staff, reviewed EIS work, evaluated management and visual problems related to timber harvest, and led a design team charged with the development of visitor information sites in the

region. In 1973, Reed joined the BLM, beginning this phase of his career at the BLM State Office in Salt Lake. He was involved with landscape architectural programs, areas of critical environmental concern, EIS evaluation, natural history, and recreation design. Reed spent three years as the

Bear River Resource Area Manager, leading a staff of specialists and concentrating on inter-district cooperation. From 1987-1992, he served as the State Outdoor Recreation Planner for the BLM, coordinating with other agencies and private groups to promote the development of the state's recreational resources.



Professor Laval Morris (left) giving a critique in 1954 to students Charlie Baugh (center) and Reed Stalder (right), a recipient of the 1994 Distinguished Alumni Award

ALUMNI, continued

Reed's most recent position has been State Office Landscape Architect, responsible for the coordination of the recreation maintenance and construction program, recreation site planning, facility design and development, monitoring of use and user safety, VRM training, as well as a number of other activities. He has held offices with ASLA and Utah Recreation and Parks Association, and is now serving as the Chairperson of the Utah State Board of Examiners for Landscape Architects. His numerous professional awards include an ASLA Honor Award for the preparation and publication of "Visual Resource Management" and "Visual Simulation Techniques."

Del Price, BS '59. Del has been instrumental in establishing and leading several programs during his career with the BLM, including Historic Preservation, Cave Management, Visual Resource Management, Byways, and Primitive Areas guidelines. He was the primary lead in merging recreation planning into the Bureau's overall planning system. Working at the Denver Service Center, he provided direction in designing large recreation areas as well as individual campgrounds and other facilities. From 1978-1992 Del worked out of the Washington Office on the Recreation Staff, leading the Trails program, the Off Highway Vehicle program, and "Recreation 2000--Recreation's Vision for the Future," among others. He was recognized by the Secretary of the Interior for superior service over 20 years with a "Distinguished Service Award" in 1991. He moved back to Denver in 1992, but remained on the Washington Recreation Staff, extending his stay by six months before retirement in order to see the Recreation 2000 project and Cave Management regulations to completion. Del and his wife Marilyn now live in Fort Collins, CO, and have raised five children.

Lyle B. Gomm, BFA '66. Lyle has spent the last 28 years with the USFS in a variety of positions. He developed early methods of visual simulation, earning him national recognition and a number of awards. Lyle was one of the first in the nation to successfully implement the National Forest Management Act, as well as NEPA, leading the team which developed a comprehensive land and resource management plan for the Uinta National Forest. He has served as a Chief over several USFS branches, including Recreation and Lands, Law Enforcement, Fire Management and Aviation, and Emergency Management. In 1986 he was selected for the first Intermountain Region's Congressional Development Program and served as a fellow on the staff of Congressman Hansen (UT). Lyle has been the driving force behind the Great Western Trail, extending 2,400 miles from Canada to Mexico, passing through Idaho, Wyoming, Utah, and Arizona. The Trail is now under consideration by Congress for designation as a National Scenic Trail. Among the many honors and awards Lyle has received, highlights include a Commendation for Heroism (having pulled three

men from a burning helicopter), and Congressional recognition for his work with volunteer youth. He has been closely involved with the development of public/private partnerships in recreation as a USFS representative, working with corporate leaders from Disney and Coleman, among others.

Lyle is now serving as the Regional Landscape Architect for 16 forests in the Intermountain Region, which include 34 million acres and 25 LAs. He is also the Regional Trails Coordinator, managing 21,000 miles of USFS trails, with a budget of \$4.3 million. In addition, Lyle is the Chair of the interagency National Task Force on Visual Simulation. He and his wife, Dr. Annette Gomm, live in Orem, Utah, enjoying their family and grandchildren. In his spare time, Lyle builds and pilots experimental aerobatic aircraft.

Clark L. Ostergaard, BLA '64. Clark has worked with the USFS from the time of his graduation up until his recent retirement. After a few years in Idaho and California forests, he returned to his native Utah, and has spent the last 23 years with the Wasatch-Cache National Forest. He has served as Design Team leader for both Utah and Nevada forests. Among Clark's many awards, this year's ASLA National Public Practice Award, in the category of Ecosystem Management, is the most recent. This award recognizes Clark's work in stream rehabilitation in Mill Creek Valley, near Salt Lake. He has been recognized by the Chief of the USFS with a New Perspective Award and an Intermountain Regional Design Award for the same project. Clark has also received an Intermountain Regional Design Award for his work in the Logan Canyon Pipeline project.

An accomplished watercolor artist, Clark has submitted the winning entries for the 1988 Wyoming Conservation Stamp and the Delaware Trout Stamp competitions, the 1989 Poster for the first Utah Wildlife Conference, and the 1990 Utah Ducks Unlimited Poster competition. He was named Artist of the Year at the 1988 National Conservation Symposium at USU, and is listed in Utah Art as one of the state's foremost artists. His work was selected for showing in the 3rd International LDS Art Show, 1994. Continuing the LAEP Department family tradition, Clark's son Sid will be a Junior in the program this fall.

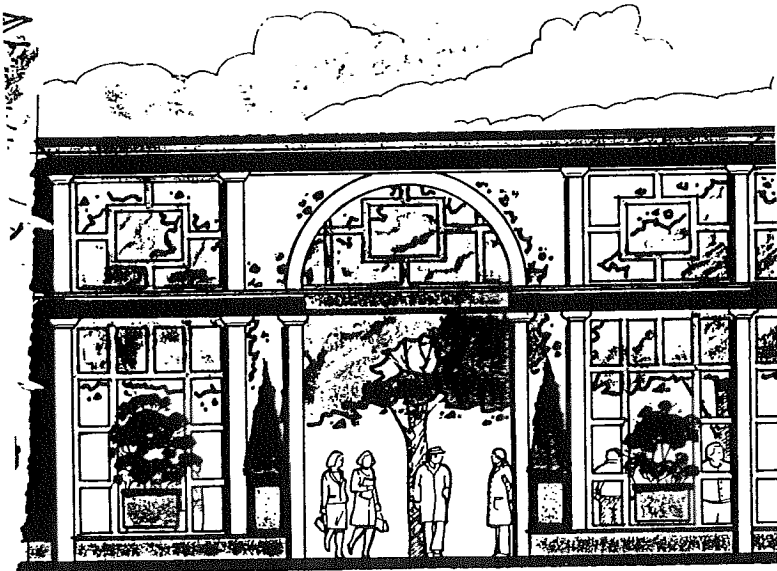
Mary J. Herzog Parkin, BLA '79. Mary joined the US Fish and Wildlife Service after graduation from USU. She developed a comprehensive resource management and facility planning process for national wildlife refuges, then implemented the process on refuges from Bosque del Apache in New Mexico to the Great Dismal Swamp in Virginia and North Carolina. For the past five years, Mary has served as the USFWS's Endangered Species Recovery Coordinator for the Northeast Region, overseeing the protection and restoration of 85 endangered plant and animal species in a 13-state area extending from Maine to Virginia. Her work demands integration of technical areas such as conservation biology, landscape ecology, environmental planning, physical and

ALUMNI, continued

biological sciences, environmental education, environmental law, economics, and information systems management. She has received numerous special achievement awards from the FWS. Mary is developing both multi-species and ecosystem protection plan as well as a regional Habitat Protection Strategy that will use GIS technology to map and evaluate all endangered species habitat in the Northeast. She was selected to represent the FWS in a nationwide "flexi-place" experiment; the experiment succeeded, and she now works primarily out of her home.

Mary is a member of the Advisory Council of the New England Plant Conservation Program, an alliance of more than 70 organizations founded to protect rare and endangered native plants. In her capacity as a Council member, she has been committee chairperson for developing policy on the introduction of endangered plants to restored habitats. Looking ahead, Mary intends to fuse her conservation experience with responsive landscape design, and has begun to explore the premise that design for ecological co-existence can yield valid and surprising solutions for enhancing the built environment.

Living with her husband and two children in Cambridge, MA, the family has been active in promoting and participating in innovative primary education programs. Mary's appetite for travel, sparked by her Morris Travel Fellowship to New Zealand, has taken her to France, China, Japan, and Russia.



STEFAN JOHANSSON

FACULTY AND STUDENT AWARDS

LAEP Teacher of the Year: Craig W. Johnson

LAEP Advisor of the Year: Richard E. Toth

Faculty Medal: Stefan V. Johansson

LAEP Outstanding Students:

Jinger Paxman Diaz

Stefan V. Johansson

Kimberly Meyers

Outstanding 1st Year Graduate Student:

Jacquelynn D. Hoffer

Outstanding 2nd Year Graduate Student:

Cynthia Butler

Outstanding 3rd Year Graduate Student:

Bart D. Dean

Outstanding Junior Student:

Scott C. Peters

Outstanding Sophomore Students:

RebeccaLynn Lundgren

Wesley D. Baumgartner

David Jensen Scholarship 1993-94:

Jacquelynn D. Hoffer

Morris Travel Fellowship:

Bart. D. Dean

(destination--People's Republic of China)

ASLA Certificate of Honor:

Ruth Wescott, Graduate

Erik J. Aulestia, Undergraduate

Greg S. Kloberdanz, Undergraduate

Kimberly Meyers, Undergraduate

ASLA Certificate of Merit:

Julianne M. Duncan, Graduate

Stefan V. Johansson, Undergraduate

Jinger Paxman Diaz, Undergraduate

Richard D. Wixom, Undergraduate

National Honor Society--Sigma Lambda Alpha:

Cynthia Butler

Nancy Ann McLean

Phyllis Ann Bustamante

Mark W. Malstrom

Joseph B. Campo

Darrin K. Perkes

Michael R. Child

Scott C. Peters

John L. Conde

Wade G. Peterson

Heather L. Ellena Daines

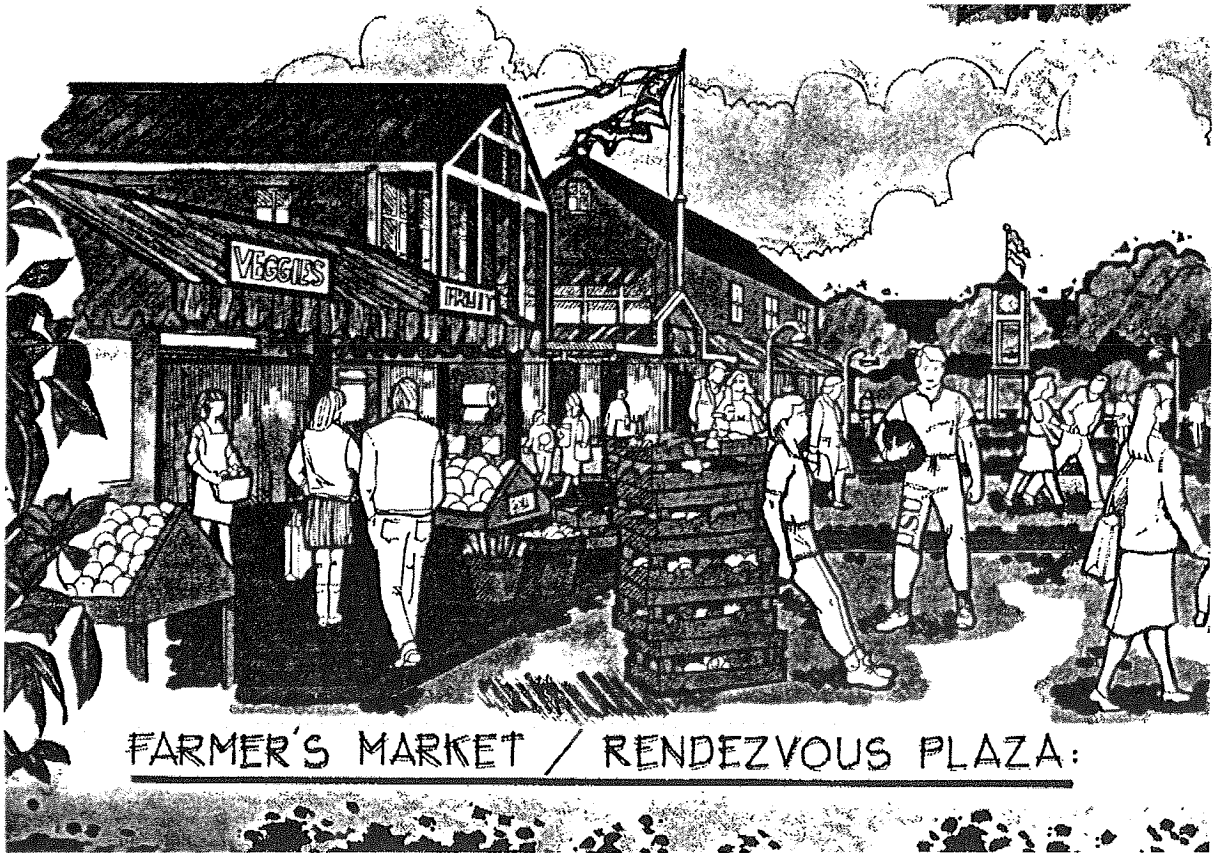
Amy G. Rawlinson

Jeffrey D. Gilbert

Justin K. Williams

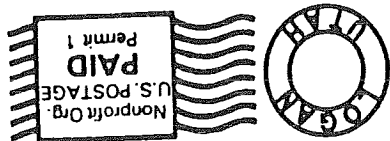
Paul M. Krommenhoek

Sarah Uram



FARMER'S MARKET / RENDEZVOUS PLAZA:

STEFAN JOHANSSON



Department of Landscape Architecture and
 Environmental Planning
 Logan, Utah 84322-4005
UtahState
 UNIVERSITY