

Utah State University

DigitalCommons@USU

Fall Student Research Symposium 2021

Fall Student Research Symposium

12-9-2021

Dramaturgy for *Miss Bennet: Christmas at Pemberley*

Samantha Stringham

Utah State University, stringhamsamantha@gmail.com

Follow this and additional works at: <https://digitalcommons.usu.edu/fsrs2021>



Part of the [English Language and Literature Commons](#)

Recommended Citation

Stringham, Samantha, "Dramaturgy for *Miss Bennet: Christmas at Pemberley*" (2021). *Fall Student Research Symposium 2021*. 48.

<https://digitalcommons.usu.edu/fsrs2021/48>

This Book is brought to you for free and open access by the Fall Student Research Symposium at DigitalCommons@USU. It has been accepted for inclusion in Fall Student Research Symposium 2021 by an authorized administrator of DigitalCommons@USU. For more information, please contact digitalcommons@usu.edu.

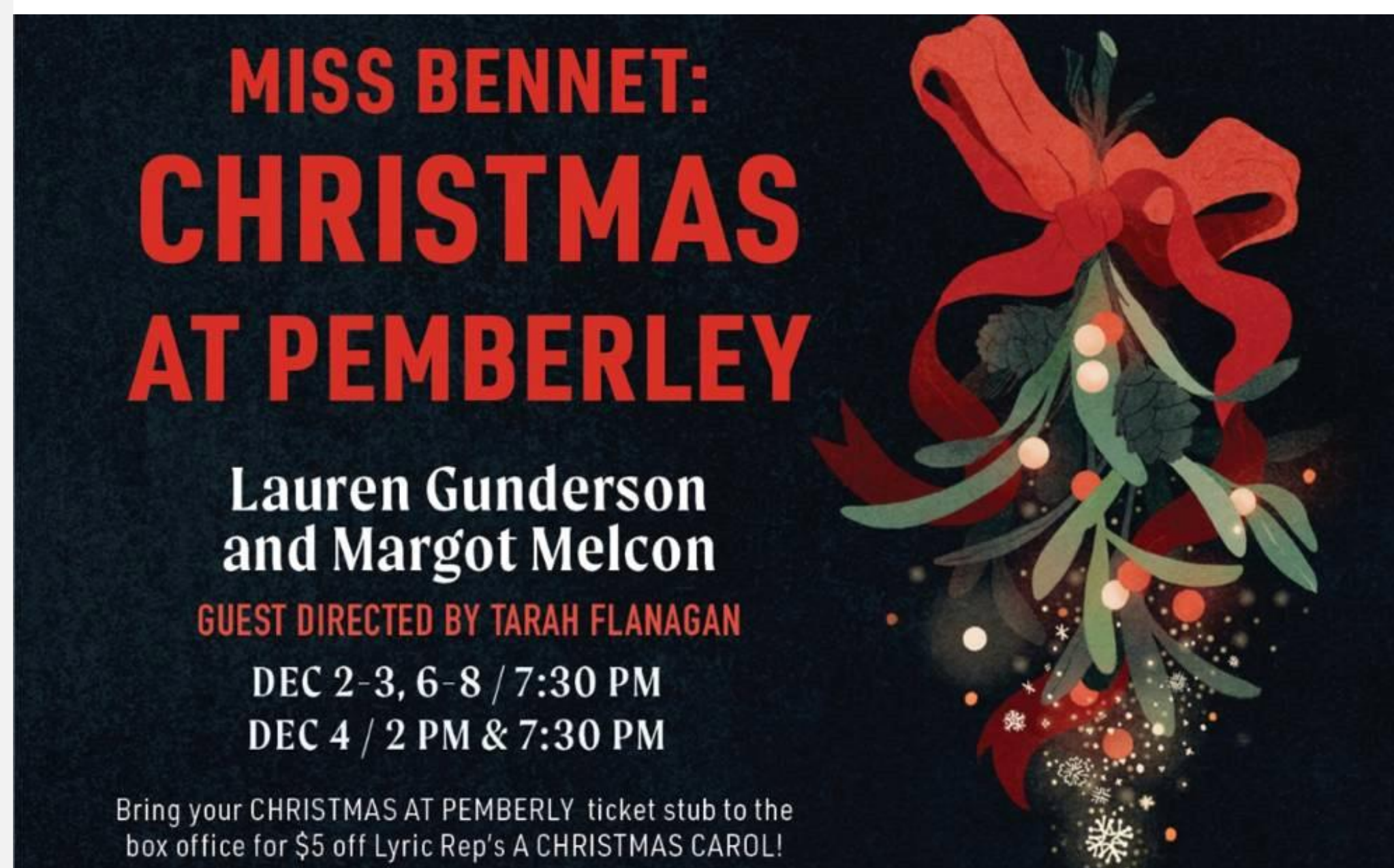


Dramaturgy for *Miss Bennet: Christmas at Pemberley*

Introduction to *Miss Bennet*

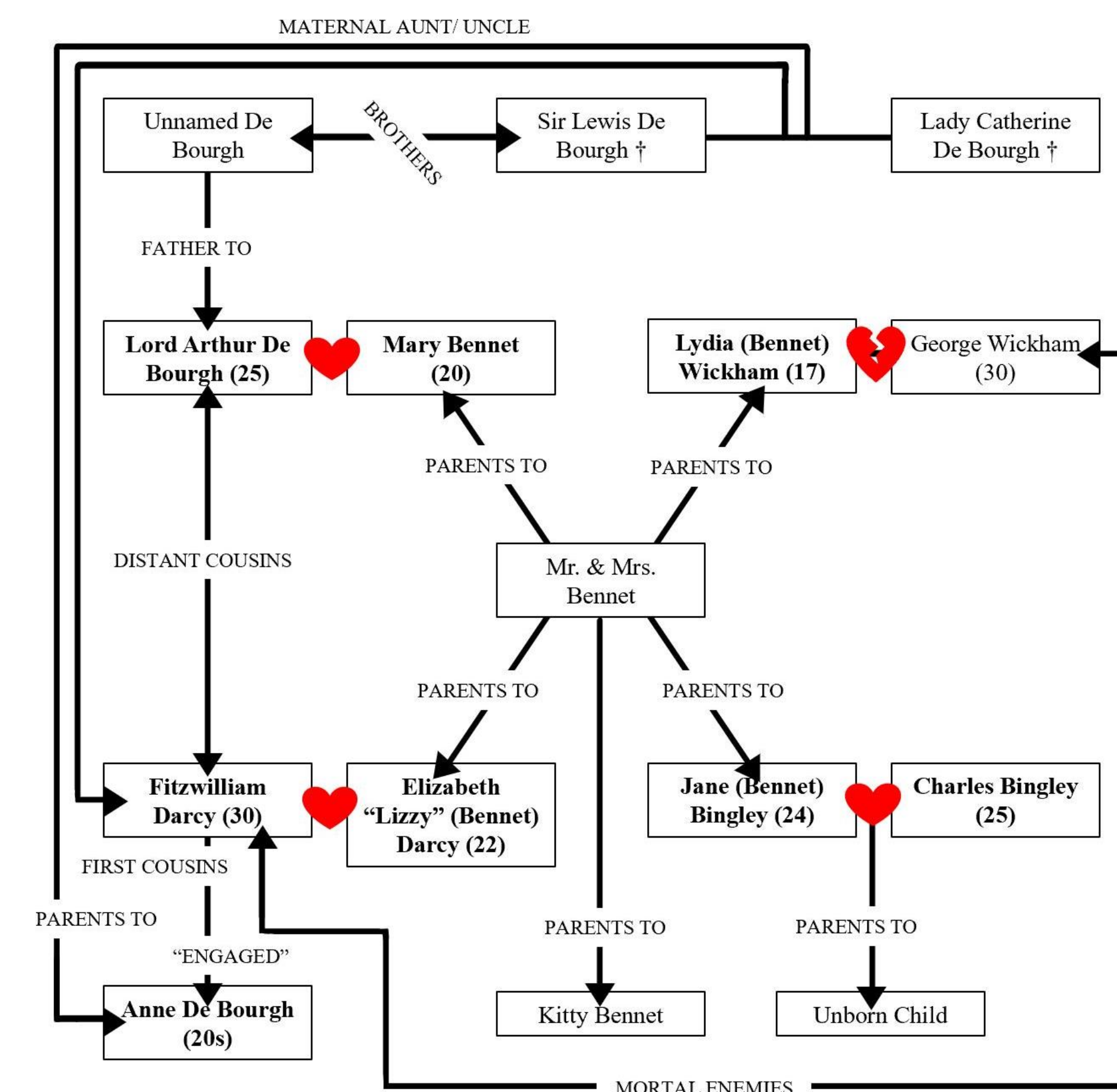
Miss Bennet: Christmas at Pemberley was originally produced by Northlight Theatre in Chicago, Illinois, on November 10, 2016. It was also produced at Round House Theatre in Bethesda, Maryland on November 23, 2016, and by Marin Theatre Company in Mill Valley, California, on November 25, 2016

- **Lauren Gunderson:**
 - America's most produced playwright in 2017 and 2019
 - Two-time winner of the Steinberg/ATCA New Play Award
- **Margot Melcon:**
 - Theatre artist, administrator, and writer
 - Former Director of New Play Development at Marin Theatre Company

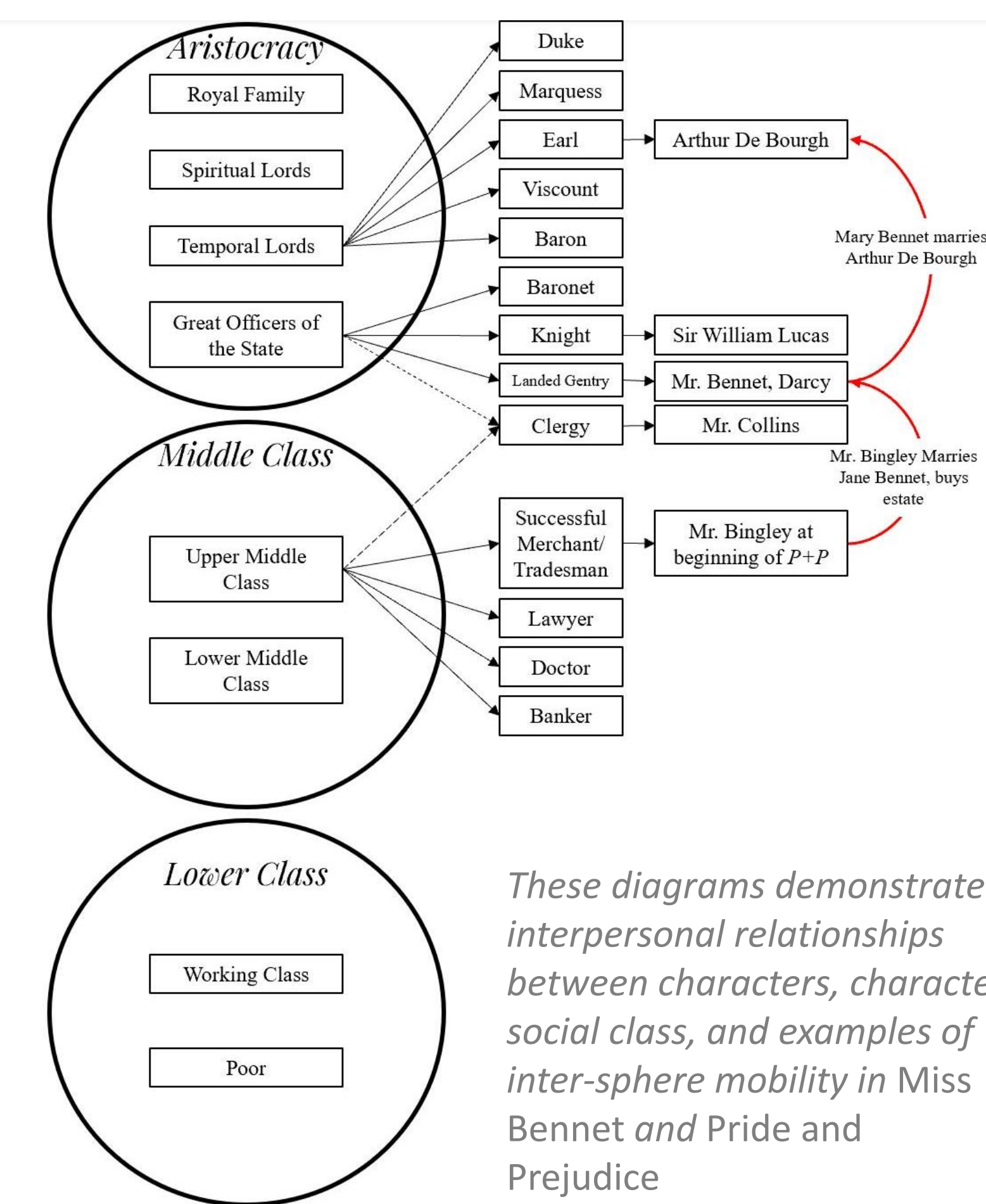


The World of the Play

Character Map



Social Class and Inter-Sphere Mobility



These diagrams demonstrate interpersonal relationships between characters, character social class, and examples of inter-sphere mobility in *Miss Bennet* and *Pride and Prejudice*

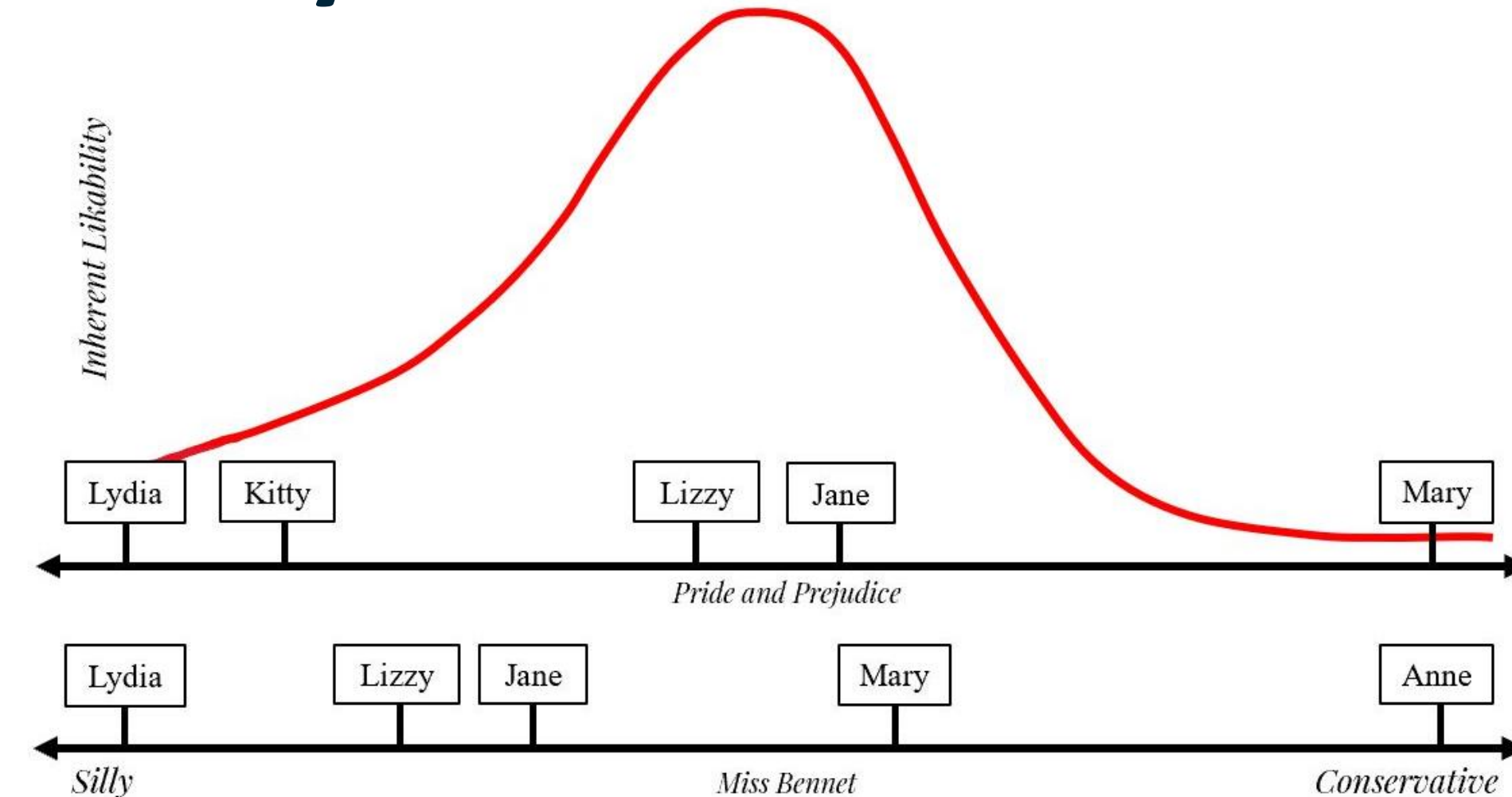
“It is the talk of life’s drive to greater complexity that most interested me.”

Mary Bennet, Act 1, Scene 3
Gunderson and Melcon (2016)

Conclusion

The aim of this dramaturgical research was to explore and understand *Miss Bennet: Christmas at Pemberley* by Lauren Gunderson and Margot Melcon within the context of Jane Austen and *Pride and Prejudice*, the sociohistorical and contextual norms of Regency England, and within the world of the play itself. The goal was for this research to be utilized by the cast and production team of Utah State University’s production of *Miss Bennet* (directed by Tarah Flanagan) as a resource to inform production, performance, and design. This was achieved through strictly textual, and performance-focused analysis of the play. Full text of the dramaturgical resource guide and program note can be found at the QR code below.

Mary Bennet



Gunderson and Melcon’s redevelopment of Mary’s character combined with the addition of Anne De Bourgh with her “judgmental and impatient nature” serve to push Mary to a more likable middle ground than she occupies in *Pride and Prejudice*.

Philosophie Zoologique and Lamarckian Evolution

Lamarck’s *Zoological Philosophy*, has clear ties to Mary and her place in the world. He suggests two laws that would enable animal species to acquire characteristics under the influence of the environment:

- Use or disuse causes structures to grow or shrink across generations
 - These changes are inheritable
- The thought that environment drives change is certainly the case for Mary and Arthur who decide to embrace their new situations and force change.

