

Utah State University

DigitalCommons@USU

Fall Student Research Symposium 2022

Fall Student Research Symposium

12-7-2022

BIPOC Contributions Are Largely Excluded From Introductory Social Work Textbooks

Porscha Doucette

Utah State University, porschalc@gmail.com

Follow this and additional works at: <https://digitalcommons.usu.edu/fsrs2022>



Part of the [Social and Behavioral Sciences Commons](#)

Recommended Citation

Doucette, Porscha, "BIPOC Contributions Are Largely Excluded From Introductory Social Work Textbooks" (2022). *Fall Student Research Symposium 2022*. 77.

<https://digitalcommons.usu.edu/fsrs2022/77>

This Book is brought to you for free and open access by the Fall Student Research Symposium at DigitalCommons@USU. It has been accepted for inclusion in Fall Student Research Symposium 2022 by an authorized administrator of DigitalCommons@USU. For more information, please contact digitalcommons@usu.edu.



Recognizing and including diversity in social work's history promotes social justice.



Porscha Doucette
Utah State University

Dr. Chris Babits
Utah State University

Value: Social Justice

The National Association of Social Workers first added **social justice** to its **Code of Ethics in 1979**. However, the major focus for social justice was outside the profession itself. In order to genuinely work towards social justice, **lingering institutional racism and white supremacy** must be identified and rectified at every level of the profession, **including its education**.

Text/Historical Analysis

36 Intro to Social Work syllabi

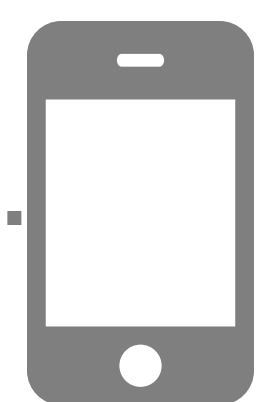
Historical Analysis

Of primary and secondary source research into a diverse social work history.

11 Most common textbooks

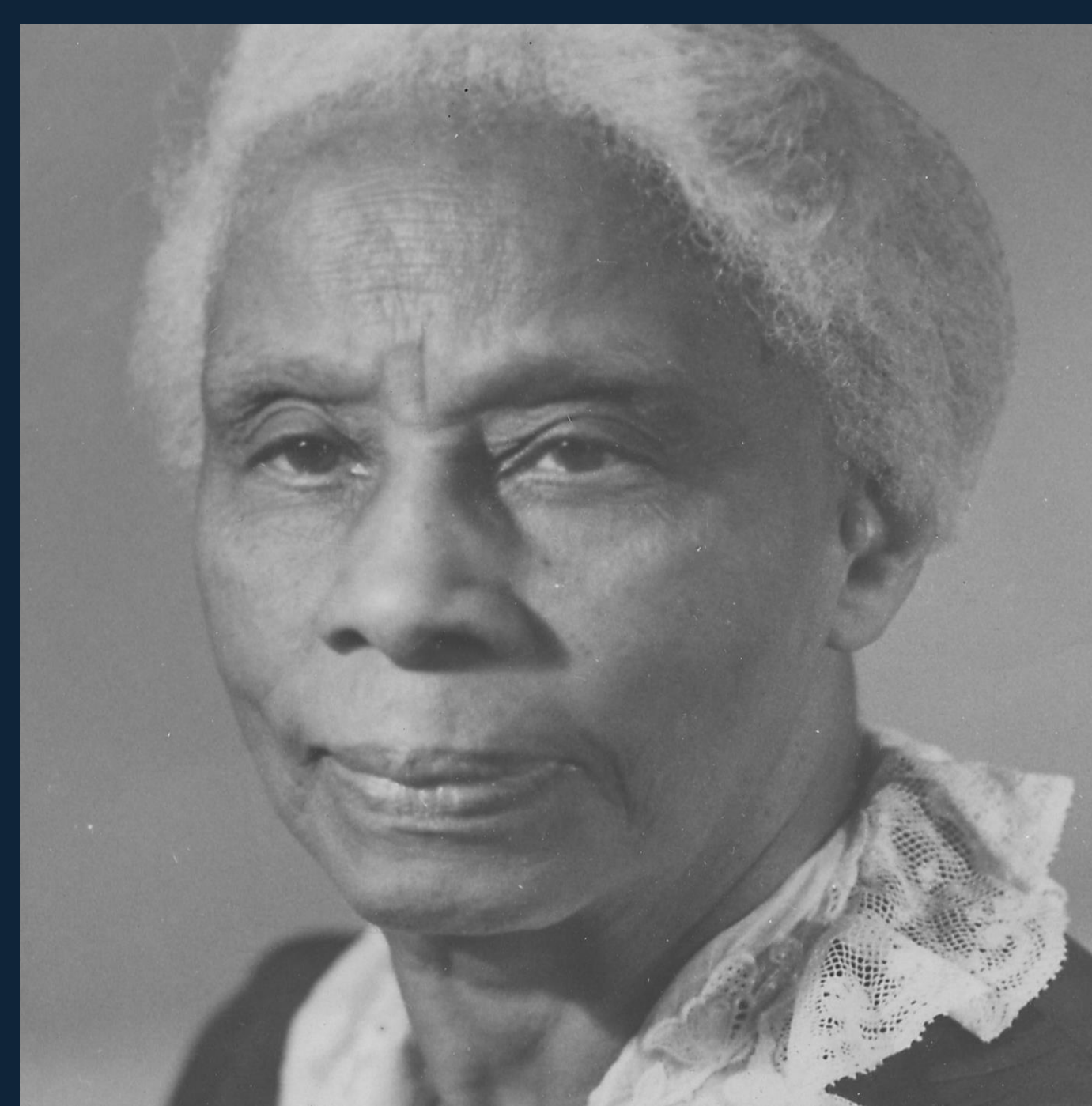
Content Analysis

To discover patterns in the presentation of diversity within historical content.



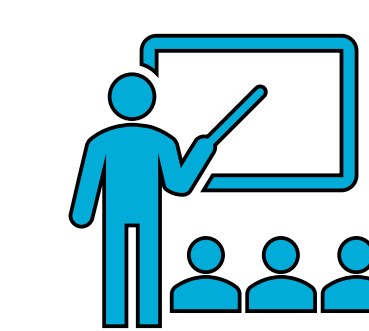
Take a picture to access the research online.

BIPOC contributions are largely excluded from introductory social work textbooks.



From upper left to bottom right: Ida B. Wells-Barnett, Laura Cornelius Kellogg, Sarah Collins Fernandis, W.E.B. Du Bois
Prominent BIPOC social work pioneers, not usually mentioned in introductory textbooks.

Whitewashed History



Preliminary findings reveal a **white**

supremacist foundation in the studied textbooks. This was illustrated through the **figures highlighted** as social work's pioneers and founders, as well as through the **perspectives used** and **general formatting**.



For instance, the **textbooks highlight**

Jane Addams as a key pioneer in the settlement house movement. **Very few** textbooks, however, **mention the parallel African American settlement house movement** which arose due to racial exclusions in White-run services.



When textbooks introduce BIPOC

pioneers, it was only **after discussing comparable White social workers**, and often within a separate **"diversity section."** This approach **marginalizes BIPOC pioneers** as "other" and less important than White social workers.



In some textbooks, **BIPOC** were only

discussed in terms of their needs, positioning White pioneers as the givers of services and BIPOC as receivers. This positioning **creates a white savior narrative** which is still pervasive within the profession.



UtahStateUniversity