

Utah State University

DigitalCommons@USU

[Research on Capitol Hill](#)

[Browse Undergraduate Research Events](#)

1-25-2023

BIPOC Contributions Are Largely Excluded From Introductory Social Work Textbooks

Porscha Doucette
Utah State University

Follow this and additional works at: <https://digitalcommons.usu.edu/roch>



Part of the [Social and Behavioral Sciences Commons](#)

Recommended Citation

Doucette, Porscha, "BIPOC Contributions Are Largely Excluded From Introductory Social Work Textbooks" (2023). *Research on Capitol Hill*. Paper 134.

<https://digitalcommons.usu.edu/roch/134>

This Poster is brought to you for free and open access by the Browse Undergraduate Research Events at DigitalCommons@USU. It has been accepted for inclusion in Research on Capitol Hill by an authorized administrator of DigitalCommons@USU. For more information, please contact digitalcommons@usu.edu.



Recognizing and including diversity in social work's history promotes social justice.



Porscha Doucette
Utah State University

Dr. Chris Babits
Utah State University

Value: social justice

The National Association of Social Workers first added **social justice** to its **Code of Ethics in 1979**. However, the major focus for social justice was outside the profession itself.

In order to genuinely work towards social justice, **lingering institutional racism and white supremacy** must be identified and rectified at every level of the profession, **including its education**.

Text/historical analysis

36 Intro to Social Work syllabi

Historical Analysis

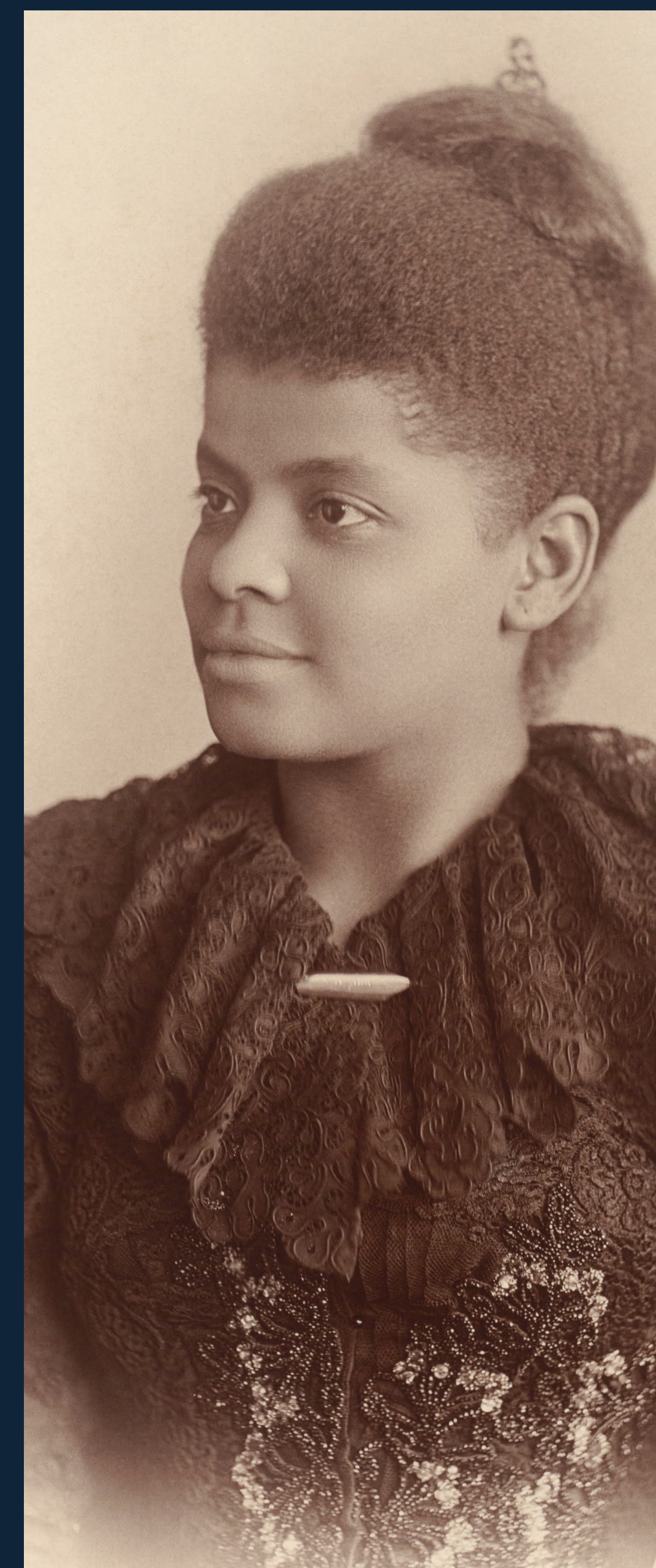
Of primary and secondary source research into a diverse social work history.

11 Most common textbooks

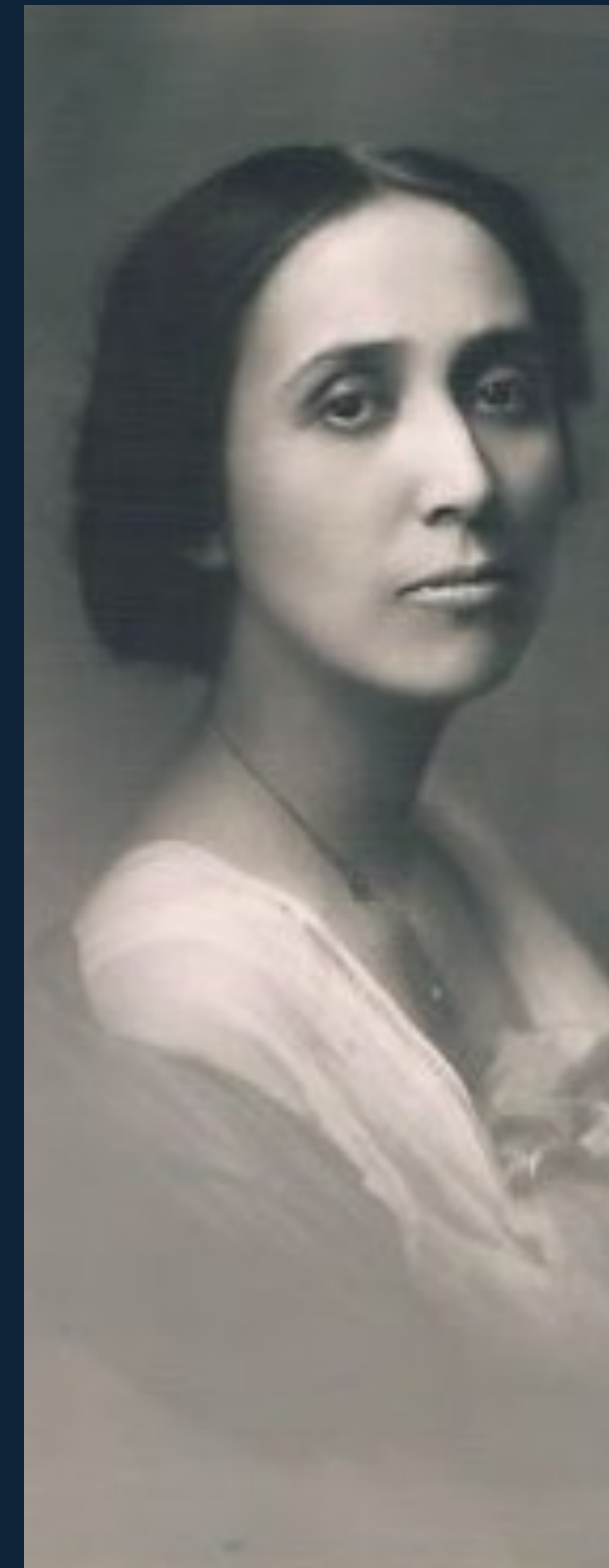
Content Analysis

To discover patterns in the presentation of diversity within historical content.

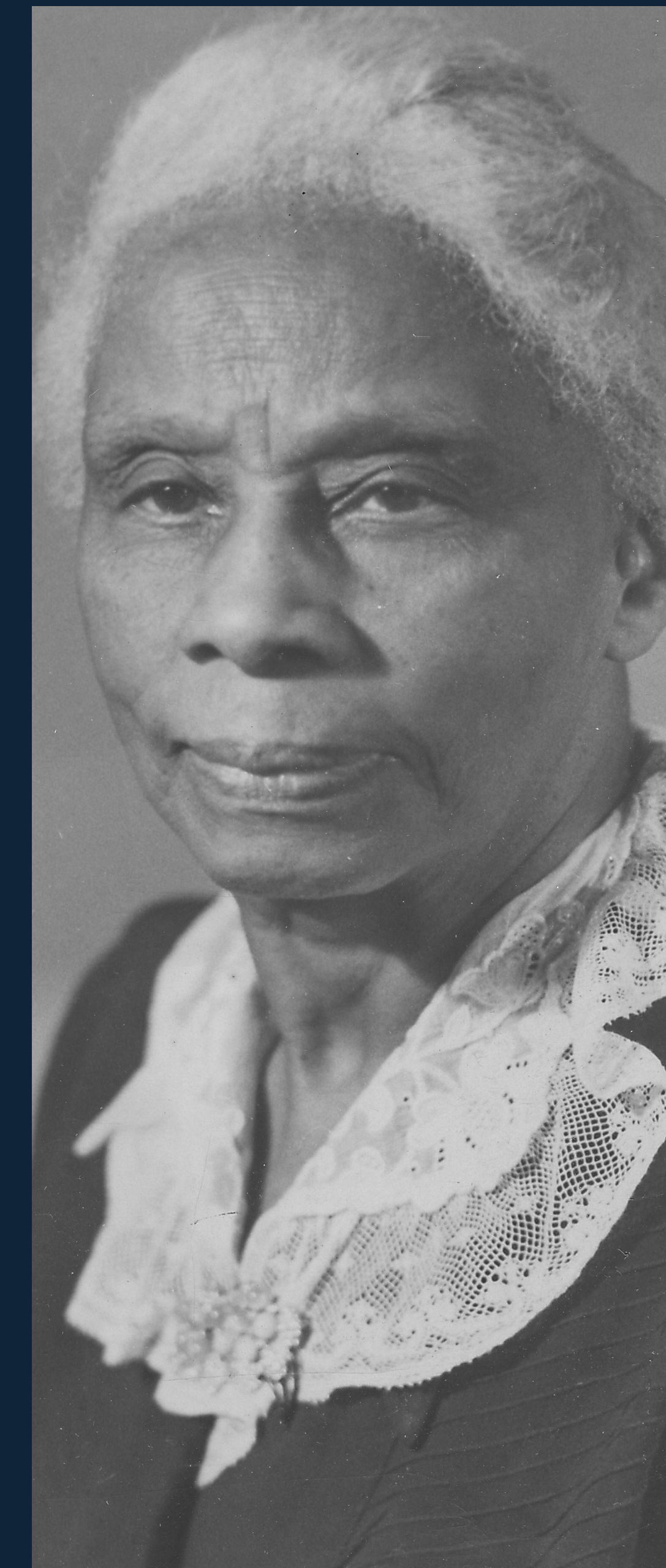
BIPOC contributions are largely excluded from introductory social work textbooks.



Ida B. Wells-Barnett



Laura Cornelius Kellogg



Sarah Collins Fernandis



W.E.B. Du Bois

Prominent BIPOC social work pioneers, not usually mentioned in introductory textbooks.

A history of whitewashed history



Preliminary findings reveal a **white supremacist foundation** in the studied textbooks. This was illustrated through the **figures highlighted** as social work's pioneers and founders, as well as through the **perspectives used** and **general formatting**.



For instance, the **textbooks highlight Jane Addams** as a key pioneer in the settlement house movement. **Very few** textbooks, however, **mention the parallel African American settlement house movement** which arose due to racial exclusions in White-run services.



When textbooks introduce BIPOC pioneers, it was only **after discussing comparable White social workers**, and often within a separate **"diversity section."** This approach **marginalizes BIPOC pioneers** as "other" and less important than White social workers.



In some textbooks, **BIPOC** were only **discussed in terms of their needs**, positioning White pioneers as the givers of services and BIPOC as receivers. This positioning **creates a white savior narrative** which is still pervasive within the profession.



UtahStateUniversity