

Utah State University

DigitalCommons@USU

Research on Capitol Hill

Browse Undergraduate Research Events

2-7-2022

Multiracial Students Do Not Belong in the Margins.

Aubrey Felty
Utah State University

Follow this and additional works at: <https://digitalcommons.usu.edu/roch>



Part of the [Theatre and Performance Studies Commons](#)

Recommended Citation

Felty, Aubrey, "Multiracial Students Do Not Belong in the Margins." (2022). *Research on Capitol Hill*. Paper 137.

<https://digitalcommons.usu.edu/roch/137>

This Poster is brought to you for free and open access by the Browse Undergraduate Research Events at DigitalCommons@USU. It has been accepted for inclusion in Research on Capitol Hill by an authorized administrator of DigitalCommons@USU. For more information, please contact digitalcommons@usu.edu.



Margin of Error: Navigating Higher Education as a Multiracial Student



Aubrey Felty
Utah State University

Matt Omasta, Ph.D.
Utah State University

Research from a theatre student

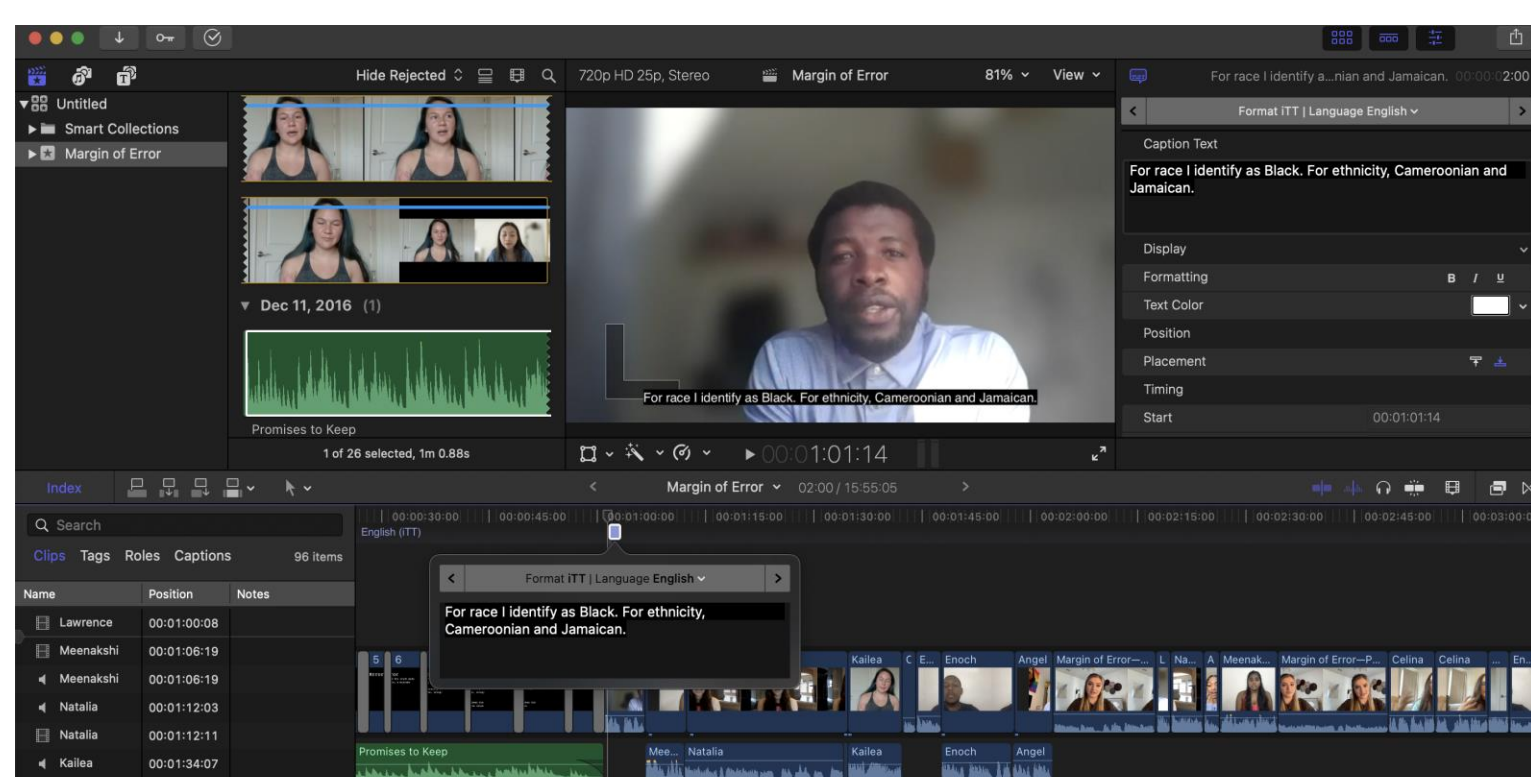
- B.F.A. Theatre Education
- Caine College of the Arts Scholar
- Theatre Arts Talent of the Year
- Co-author of 2 research articles

USU demographics

- During the Fall semester of 2020 at USU, about 18% of students enrolled were students of color.
- About 2.5% of students enrolled identified as two or more races.

Research questions

- How do multiracial individuals perform their self-identity in different social contexts?
- Do multiracial individuals feel obligated to perform particular racial identities, or aspects of those identities?
- How do university demographics affect multiracial individuals' educational experiences?



Screenshot of editing the film

Multiracial students do not belong in the margins.



Filming with respondents

Margin of Error is a docudrama that involves actor portrayals of interviews with multiracial college students who discuss navigating their multiple racial identities at often predominantly white universities.



UtahStateUniversity

Elevating voices and creating story space

- Elevate the voices of multiracial students
- Provide space for multiracial individuals to share their stories
- Promote a better understanding of multiracial people

Sharing the film

- *Margin of Error* premiered at USU on December 10th, 2021
- The film was released to the public via YouTube

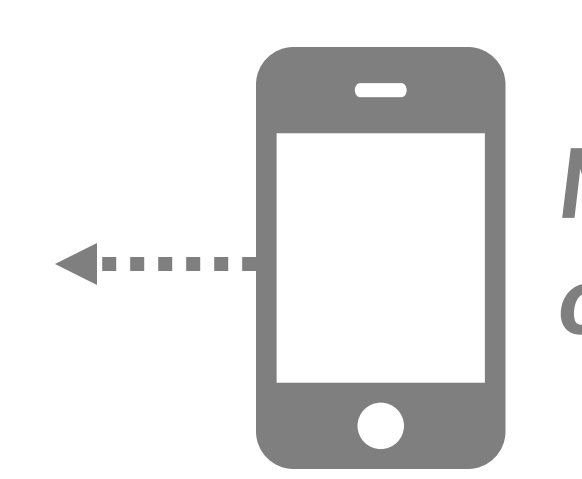


Margin of Error screening at USU

Call for change

- Underrepresentation and misrepresentation alienate multiracial individuals
- Reevaluate the initial single-race approach to curriculum
- Need for anti-racism training for faculty, staff, and students

Watch the film!



*Margin
of Error*