

Utah State University

DigitalCommons@USU

Reports of the Secretary to the President
Student Affairs President's Correspondence,
1900-1907

William J. Kerr

1-1-1904

N. E. A.

A. V. Storm

National Educational Association

Follow this and additional works at: https://digitalcommons.usu.edu/kerr_reports

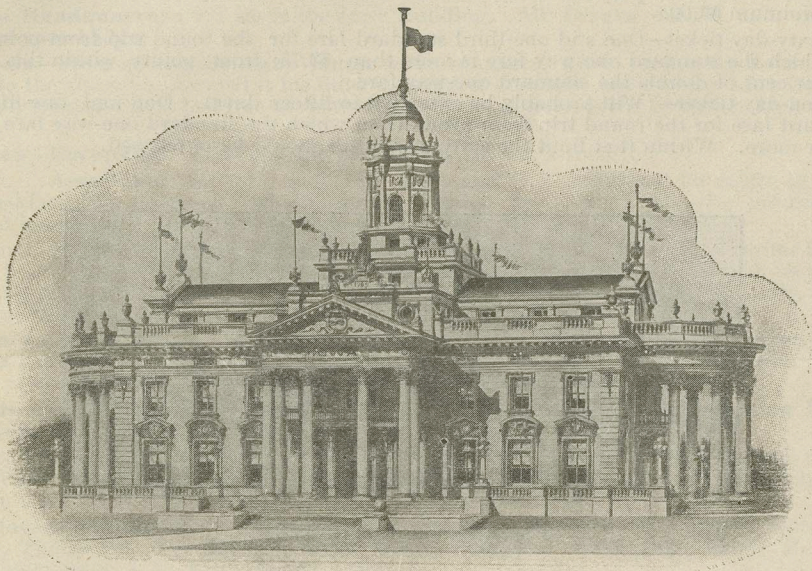
Recommended Citation

William Kerr papers, University Archive, 03p01s04d02Bx002Fd14 (National Education Association, 1902-1903)

This National Education Association, 1902-1903 is brought to you for free and open access by the William J. Kerr at DigitalCommons@USU. It has been accepted for inclusion in Reports of the Secretary to the President Student Affairs President's Correspondence, 1900-1907 by an authorized administrator of DigitalCommons@USU. For more information, please contact digitalcommons@usu.edu.



N. E. A.



IOWA BUILDING.

To the Teachers of Iowa:

The Forty-Third Annual Meeting of the National Educational Association will be held in St. Louis on the Louisiana Purchase Exposition (World's Fair) Grounds, June 27 to July 1, 1904.

The regular convention week will be devoted to the general and departmental meetings of the Association for which programs have been prepared bearing special reference to the work of the various school systems of the world as exemplified in the work exhibited in the Palace of Education.

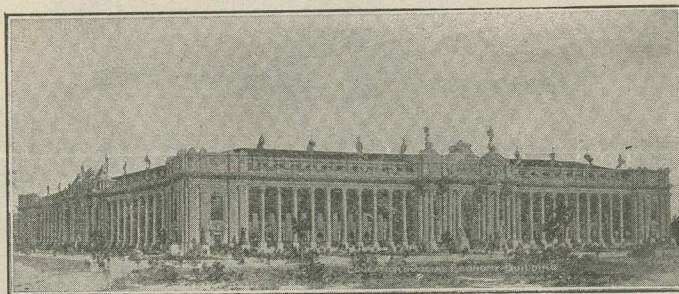
The second week, July 4 to 11, may be devoted among other things to a detailed

study of these exhibits under the guidance of special assistants who will be on duty that week only.

The **Railroad Rates** which interest Iowans are in brief:

The Western Passenger Association, including all lines north and west of Chicago, Peoria, St. Louis, and Kansas City, extending to Salt Lake City and Montana, has granted rates as follows:

- A. Season ticket—80 per cent of double the standard one-way fare for the round trip, minimum \$3.00.
- B. Sixty-day ticket—One and one-third standard fare for the round trip from points from which the standard one-way fare is more than \$3.75; from points within this limit 80 per cent of double the standard one-way fare.
- C. Ten-day ticket—(Will probably be extended to fifteen days). One and one-fifth standard fare for the round trip from points from which the standard one-way fare is \$3.00 or more. Within that limit the sixty-day ticket should be purchased.



PALACE OF EDUCATION.

The question of changing the limit of above ten-day ticket to fifteen days is under consideration by the Western Passenger Association with assurances of favorable action. The result can be ascertained by inquiry of local ticket agents.

Up to date the following roads have agreed to extend the time of the ten-day ticket to 15 days, viz: A. T. & S. F.; C. G. W.; C. & N. W.; C. M. & St. P.; C. St. P. M. & O.; Ill. Cent.; M. & St. L.; Burlington Lines; C. R. I. & P., and Wabash. (Other lines will probably follow).

Membership:—Membership certificates are not paid for in the price of the railroad ticket as formerly, but those desiring the special concessions made to members of the N. E. A. must enroll as such.

Enrollment Advance:—Arrangements are made with the World's Fair authorities whereby those who enroll as members of the N. E. A. receive their membership in N. E. A. (\$2.00) and ten admission tickets to the World's Fair grounds (\$5.00), all for \$5.00,

good for use on or after June 20th instead of day shown in bulletin. Send \$5.00 to Irwin Shepard, Secretary N. E. A., Winona, Minn., before June 20th, and procure your membership and admission coupons, thus saving much trouble at St. Louis.

Enrollment at St. Louis—Those who do not enroll in advance may do so at Music Hall, (down town), cor. Olive and 14th Sts., St. Louis, or at the three main entrances to the grounds, or on the World's Fair grounds at the Inside Inn or the town hall.

N. E. A. Headquarters will be at the Missouri State building.

Iowa Headquarters will be at the Iowa Building. All Iowans should call, register, and get your badge.

Hotels—From among the many hotels your manager, after visiting St. Louis and looking into the situation, deemed it his duty to suggest a definite hotel which Iowa teachers and their friends might feel free to patronize. Such a hotel is the Christian Endeavor Hotel.

Rates—European: \$1.00 per day per person, (two in a room).

American: \$1.00 for room as above and \$1.00 additional for meals as follows: Breakfast, 35c; luncheon, (which may be carried as a lunch into the grounds), 25c; table d'hôte dinner, (from 6 to 10 p. m.), 40 cents.

To procure these rates in reservations made for Iowa people, apply for Charter Certificate on blank countersigned by the Iowa State Manager of whom blanks may be procured. Send this blank properly filled to the Christian Endeavor Hotel, St. Louis, and have your accommodations reserved, for the crowd will be very great at that time.

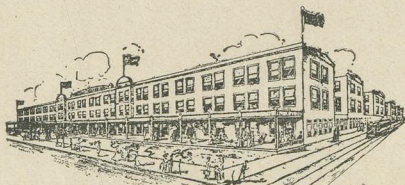
There are many other good hotels mentioned in the Program Bulletin which you can patronize if you prefer. The St. Louis Transfer Co. grant N. E. A. members a special concession on prices for the delivery of baggage.

Write Irwin Shepard, Winona, Minn., for Program Bulletin Containing Full Information.

Write W. A. Carpenter, Board of Education Building, St. Louis, regarding local conditions. Write one of the Assistant Managers, or any of the Railway Agents for particular information not contained in this or obtained from above sources.

Assistant Managers—Supt. F. T. Oldt, Dubuque; Supt. J. E. Vance, Marion; Supt. Z. C. Thornburg, Des Moines; Prin. W. J. Sampson, Burlington; Supt. R. B. Spencer, Albia; Supt. J. C. King, Boone, Iowa.

A. V. STORM, Cherokee, Iowa,
Director and State Manager of N. E. A. for Iowa.



Christian Endeavor Hotel, for Iowa Teachers.