

2011

Relative Changes in Krill Abundance Inferred from Antarctic Fur Seal

T. Huang

L. Sun

John M. Stark
Utah State University

Y. Wang

Z. Cheng

Q. Yang

See next page for additional authors

Follow this and additional works at: https://digitalcommons.usu.edu/biology_facpub

 Part of the [Biology Commons](#)

Recommended Citation

Huang, T., L. Sun, J. Stark, Y. Wang, Z. Cheng, Q. Yang, S. Sun. 2011. Relative changes in krill abundance inferred from Antarctic fur seal. PLoS ONE 6(11): e27331. doi:10.1371/journal.pone.0027331

This Article is brought to you for free and open access by the Biology at DigitalCommons@USU. It has been accepted for inclusion in Biology Faculty Publications by an authorized administrator of DigitalCommons@USU. For more information, please contact dylan.burns@usu.edu.



Authors

T. Huang, L. Sun, John M. Stark, Y. Wang, Z. Cheng, Q. Yang, and S. Sun

Relative Changes in Krill Abundance Inferred from Antarctic Fur Seal

Tao Huang¹, Liguang Sun^{1*}, John Stark², Yuhong Wang^{1,3}, Zhongqi Cheng⁴, Qichao Yang¹, Song Sun³

1 Institute of Polar Environment, School of Earth and Space Sciences, University of Science and Technology of China, Hefei, China, **2** Department of Biology and the Ecology Center, Utah State University, Logan, Utah, United States of America, **3** Institute of Oceanology, Chinese Academy of Sciences, Qingdao, China, **4** Brooklyn College, Brooklyn, New York, United States of America

Abstract

Antarctic krill *Euphausia superba* is a predominant species in the Southern Ocean, it is very sensitive to climate change, and it supports large stocks of fishes, seabirds, seals and whales in Antarctic marine ecosystems. Modern krill stocks have been estimated directly by net hauls and acoustic surveys; the historical krill density especially the long-term one in the Southern Ocean, however, is unknown. Here we inferred the relative krill population changes along the West Antarctic Peninsula (WAP) over the 20th century from the trophic level change of Antarctic fur seal *Arctocephalus gazella* using stable carbon ($\delta^{13}\text{C}$) and nitrogen ($\delta^{15}\text{N}$) isotopes of archival seal hairs. Since Antarctic fur seals feed preferentially on krill, the variation of $\delta^{15}\text{N}$ in seal hair indicates a change in the proportion of krill in the seal's diets and thus the krill availability in local seawater. For the past century, enriching fur seal $\delta^{15}\text{N}$ values indicated decreasing krill availability. This is agreement with direct observation for the past ~30 years and suggests that the recently documented decline in krill populations began in the early parts of the 20th century. This novel method makes it possible to infer past krill population changes from ancient tissues of krill predators.

Citation: Huang T, Sun L, Stark J, Wang Y, Cheng Z, et al. (2011) Relative Changes in Krill Abundance Inferred from Antarctic Fur Seal. PLoS ONE 6(11): e27331. doi:10.1371/journal.pone.0027331

Editor: Yan Ropert-Coudert, Institut Pluridisciplinaire Hubert Curien, France

Received: June 30, 2011; **Accepted:** October 14, 2011; **Published:** November 7, 2011

Copyright: © 2011 Huang et al. This is an open-access article distributed under the terms of the Creative Commons Attribution License, which permits unrestricted use, distribution, and reproduction in any medium, provided the original author and source are credited.

Funding: Funding for this work was provided by the National Natural Science Foundation of China (No. 40730107 and No. 41106162). The funders had no role in study design, data collection and analysis, decision to publish, or preparation of the manuscript.

Competing Interests: The authors have declared that no competing interests exist.

* E-mail: slg@ustc.edu.cn

Introduction

Over the past 50 years, the West Antarctic Peninsula (WAP) has experienced rapid regional warming associated with significant sea-ice and krill stock reductions [1–3]. More importantly, Antarctic krill is a key species in Southern Ocean food webs that supports large amounts of fishes, seabirds and marine mammals in Antarctic marine ecosystems [4–6]. Environmental variability throughout the WAP could lead to cascading trophic level changes [7], particularly for krill predators such as the Antarctic fur seal. From a predator's perspective, trophic level and dietary change of krill predators is a reflection of relative krill population changes [8]. Therefore, past relative krill abundance, which is difficult to obtain, could be inferred from the paleodiet of krill predators.

Stable isotope analyses of animal tissues are increasingly recognized as a powerful tool for quantifying animal's foraging habitat and trophic level [9]. For example, stable carbon ($\delta^{13}\text{C}$) and nitrogen ($\delta^{15}\text{N}$) isotope signatures of hair and whisker have been used to infer animal diets [10,11]. Keratinous tissues can preserve dietary information for long time periods [10], particularly in Antarctica, and archival keratinous hairs are ideal material for studying the dietary history of krill predators. Well-preserved hairs and droppings in lake sediments have also been used to infer past populations of seals and penguins [12–14].

In this study, we propose a novel stable isotope methodology for deducing long-term relative krill population dynamics based upon the trophic level of krill predators, and inferred the relative krill

population change of the 20th century using the $\delta^{15}\text{N}$ of Antarctic fur seal hair. Since Antarctic fur seals feed preferentially on krill [15], and their trophic level (indicated by $\delta^{15}\text{N}$) is controlled by their dietary compositions. Therefore, a shift in $\delta^{15}\text{N}$ of seal hair indicates a change in the proportion of krill in the seal's diet, and such a change should be a reflection of the availability of krill in local seawater.

Materials and Methods

Ethics statement

The authors have declared that there is no ethics problem because our samples were extracted from lake sediment.

Sampling area and chronology

Field study was carried out on Fildes Peninsula, King George Island, South Shetland Islands (62°02'S, 58°21'W). The sediment core HN1, 35.5 cm long, was retrieved from a lake catchment near a large fur seal colony. Usually, there are many female fur seals and only one male seal in the colony in summer, and seal remains such as excrements and hairs were shed to the lake and deposited into the sediments. The top 25.5-cm layer of HN1 contains seal excrement and seal hairs and is identified as seal excrement deposition; the section below 25.5 cm is littoral deposition with black basaltic sand. Here we focus on the top 25.5 cm. The chronology of HN1 was established by ^{137}Cs dating on sediments, which was verified as a reliable dating method in

previous studies [12,16]. Based on the ^{137}Cs signal in sediments, we determined the depth of 15.5 cm corresponds to 1954 AD, the beginning of the ^{137}Cs sedimentation. The ^{137}Cs peaks at depths of 11.5, 8.5, and 4.5 cm correspond to 1965 AD, 1977 AD and 1988 AD, respectively (Fig 1a). The bottom (25.5 cm) of the seal excrement deposition section was inferred corresponds to the early 20th century (approximately 1924 AD), based on the average sedimentation rate in the top 15.5 cm of the core (Fig 1b). These results are described in Yang et al. (2010) [17]. The hairs in the present study from the same sections were assumed to be from the same date.

Stable isotope analyses

HN1 was sectioned at 0.5-cm intervals. Seal hairs were hand picked, cleaned using 2:1 chloroform: methanol solution, dried at 40°C, and then weighed accurately into tin capsules. Seal hairs were analyzed for $\delta^{13}\text{C}$ and $\delta^{15}\text{N}$ by continuous-flow direct combustion and mass spectrometry using a Europa 20/20 SL isotope-ratio mass spectrometer at Utah State University. Precision is $\pm 0.15\text{‰}$ for $\delta^{15}\text{N}$ and $\pm 0.10\text{‰}$ for $\delta^{13}\text{C}$. $\delta^{15}\text{N}$ in sediments were determined by Finnigan-MAT-251 mass spectrometer at Institute of Soil Science, Chinese Academy of Sciences, and the precision is $\pm 0.20\text{‰}$. Results are presented in δ (‰) and expressed relative to air for $\delta^{15}\text{N}$ and Vienna Pee Dee Belemnite (VPDB) for $\delta^{13}\text{C}$ according to the equation: δ (‰) = $[(R_{\text{sample}} - R_{\text{standard}}) / R_{\text{standard}}] \times 10^3$, where δ (‰) represents the $\delta^{15}\text{N}$ or $\delta^{13}\text{C}$ value, R_{sample} is the isotopic ratio of the sample, and R_{standard} of the air and VPDB.

Statistical analyses

Regression analysis and t-test for the null hypothesis of a zero slope were performed on the time-series data of isotope values ($n = 50$) obtained from sediments and seal hairs in HN1 using SPSS 16.0.

Results

The $\delta^{13}\text{C}$ values of seal hairs range from -22.87‰ to -20.17‰ with a mean of -21.18‰ (Fig 2a) and show equivocal trends ($t = -1.196$, $p = 0.238$). The $\delta^{15}\text{N}$ values of seal excrement sediments range from 7.64‰ to 19.37‰ with a mean of 14.67‰ (Fig 2b). The $\delta^{15}\text{N}$ values of seal hairs range from 10.26‰ to 11.94‰ with a mean of 11.24‰ (Fig 2c); There is an obvious

difference in the rates of change between 1924–1957 and after 1957, that is the amplitude of variation in hair $\delta^{15}\text{N}$ in 1924–1957 (10.30‰ – 11.78‰ , a 1.48‰ difference) is larger than that in 1958–1997 (11.12‰ – 11.94‰ , a 0.82‰ difference). The $\delta^{15}\text{N}$ values of sediments are as enriched as 19.37‰ , exceeding the normal $\delta^{15}\text{N}$ values of marine mammals; the abnormally enriched $\delta^{15}\text{N}$ values of sediments could be the result of large fractionation effects during ammonia volatilization from seal excrement [18]. The $\delta^{15}\text{N}$ signature in hair, however, is not subject to this fractionation effect because hair is keratinized. The $\delta^{15}\text{N}$ signatures of both sediments and hairs become significantly enriched over time (sediments: $t = 13.47$, $p < 0.001$; hairs: $t = 11.04$, $p < 0.001$). The 1.68‰ enrichment of $\delta^{15}\text{N}$ in seal hairs indicates an obvious change of fur seal diets over time.

Discussion

Due to the different metabolic rates of various tissues, stable isotope values reflect trophic levels at different time scales, from days for plasma and excrement to weeks and months for feathers and hairs [9,19]. So the stable isotope values in archival hairs in HN1 reflect the average diets of fur seals during summer in their breeding seasons. In the Southern Ocean, $\delta^{13}\text{C}$ values vary with latitudes and along an inshore/offshore gradient, and typical values for Antarctica fur seal are -23‰ ~ -19‰ in Antarctica and -19‰ ~ -16‰ in subantarctica [11]. The depleted $\delta^{13}\text{C}$ values in HN1 clearly indicate foraging of fur seal in Antarctica during breeding seasons in the study area although we cannot rule out possible inshore/offshore influence.

Fecal analysis showed that Antarctic fur seals in South Shetland Islands feed mainly on krill and various fish species [20]. We estimated the range of $\delta^{15}\text{N}$ values in seal hair with various percentages of krill vs. fish in seal diet using endmember bulk nitrogen isotope values, and the result shows that seal $\delta^{15}\text{N}$ becomes enriched as krill proportion in seal diet decreases (Table 1). Krill availability affects predator's foraging behavior. In Scotia Sea, when krill is abundant, seals prey primarily on krill; and when krill is scarce, seals feed on krill and fish [15]. In Ross Sea, Adélie penguins eat more fish when krill availability is low, and vice versa [21]. The recent significant depletion of $\delta^{15}\text{N}$ in Adélie penguin is ascribed to the 'krill surplus' in the Southern Ocean [22]. Dietary change of predators reflects relative abundance of their prey items. Therefore, the $\delta^{15}\text{N}$ signature in

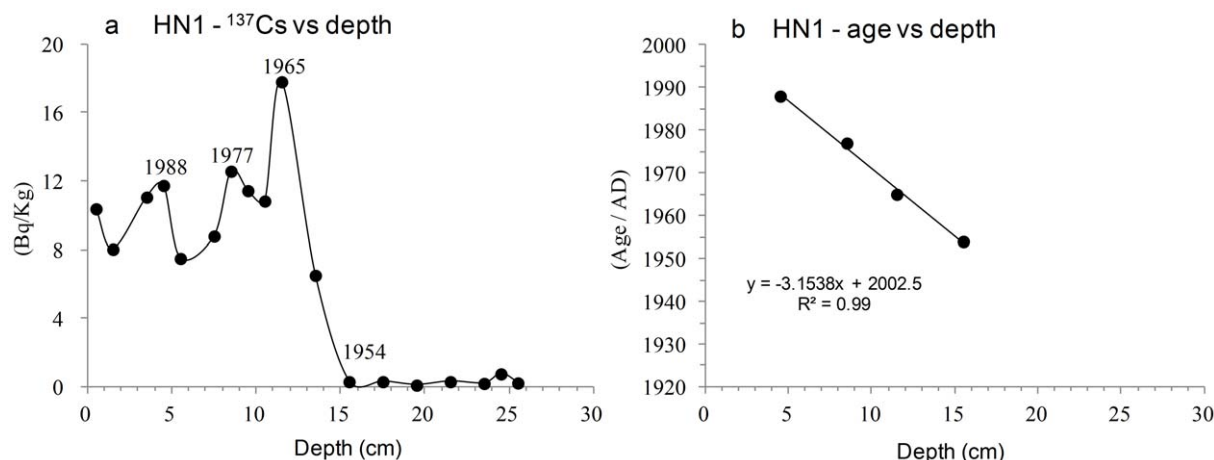


Figure 1. Chronology of HN1 by ^{137}Cs dating. (a), ^{137}Cs signal in the sediments of HN1. (b), ^{137}Cs determined age versus depths in HN1. doi:10.1371/journal.pone.0027331.g001

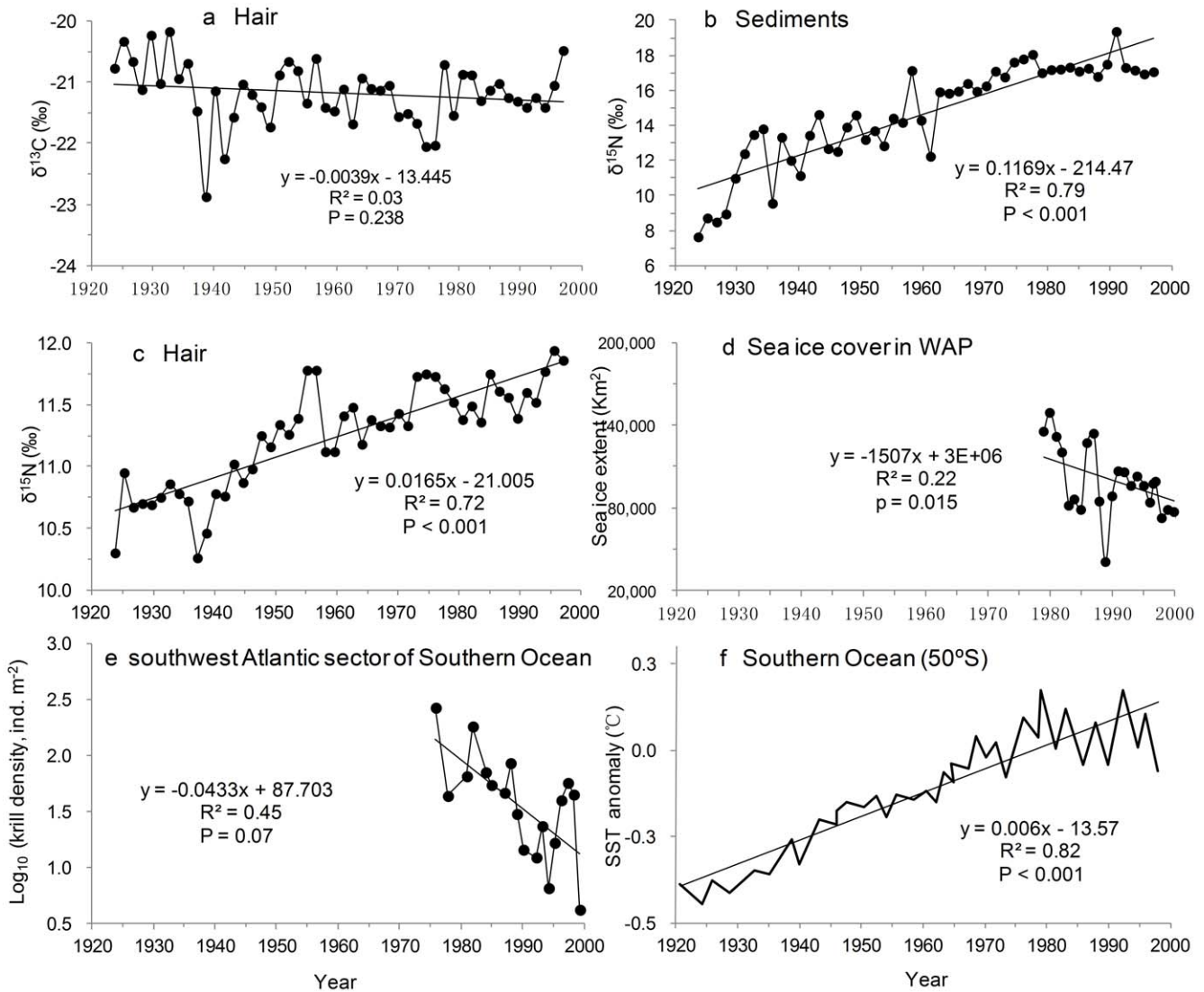


Figure 2. Changes in stable isotope values of seal hair in HN1 and regional biological and physical conditions. (a), $\delta^{13}\text{C}$ values of seal hair. (b), $\delta^{15}\text{N}$ values of seal excrement sediment. (c), $\delta^{15}\text{N}$ values of seal hair. (d), Sea ice cover along the WAP [2]. (e), Krill populations change along the WAP [3]. (f), Southern Ocean SST anomalies [25]. doi:10.1371/journal.pone.0027331.g002

seal hairs is linked to and thus could be used to infer krill availability and population.

The significantly enriching trend of the $\delta^{15}\text{N}$ signature in HN1 for the last century indicates rising seal trophic levels and decreasing proportion of krill in seal diets, and this strongly

suggests that local krill populations could have been in decline since the early 20th century. Two independent evidences support this inference. First, although there are no complete krill density databases for the past century, the decreasing krill stock in this region since 1970 s is well documented [3] and consistent with our

Table 1. Estimated $\delta^{15}\text{N}$ values in seal hair with various percentages of prey items in seal diets.

$\delta^{15}\text{N}$ (‰) in prey/predator	%		of		prey		in		diet	
<i>Electrona antarctica</i> (8.90)	100	0	0	20	33	10	10	10	0	0
<i>Gymnoscopelus nicholsi</i> (10.20)	0	100	70	33	50	40	30	30	20	20
<i>Krill</i> (5.20)	0	0	100	10	33	40	50	60	70	80
<i>Seal hair</i>	11.90	13.20	8.20	12.44	11.10	11.07	10.57	10.07	9.70	9.20

Note: The $\delta^{15}\text{N}$ of hairs are added 3.0‰ for fractionation effect according to Hobson et al. [28]. Prey $\delta^{15}\text{N}$ values are compiled from Emslie & Patterson [22] for krill and Cherel et al. [29] for *Electrona antarctica* and *Gymnoscopelus nicholsi*. doi:10.1371/journal.pone.0027331.t001

results in overall trend. Second, krill abundance is closely linked with the sea ice extent and duration [3,23,24]. In this region for the past decades, the sea ice shows a decline trend [2] (Fig 2d), and this is in coincidence with the decline trend in krill populations [3] (Fig 2e). Like the seal $\delta^{15}\text{N}$ values, the sea surface temperature (SST) anomaly in Southern Ocean (50°S) also shows an obvious increasing trend for the 20th century [25] (Fig 2f), and the significant correlation between them ($r^2 = 0.82$, $p < 0.001$) suggests that the inferred decreasing krill population is linked with warming ocean and declining sea ice extent.

Two other plausible explanations for the enriching $\delta^{15}\text{N}$ values in the sediment core HN1 could be excluded. First, an enriching baseline ($\delta^{15}\text{N}$ of the primary producer) may have contributed to the enriching seal $\delta^{15}\text{N}$ values. The $\delta^{15}\text{N}$ values of the Southern Ocean primary producer (diatom) are enriched during cold periods and depleted during warm periods [26]. Over the last 50 years, the present study site experienced a rapid air and ocean warming [1,27], and the $\delta^{15}\text{N}$ values of local primary producer were expected to be depleted. Therefore, the enriching baseline explanation seems unlikely. Second, an increasing intra-specific competition could also have led to the rising trophic level of seal in this study. The seal populations inferred from HN1 show rapid increase between 1955 and 1965 due to the ban of sealing [17], but the seal $\delta^{15}\text{N}$ values do not show corresponding 'rapid' enrichment, indicating that the intra-specific competition is not responsible for seal dietary changes. Or it is also possible that the increases in seal populations might still have been too low during that time for krill stocks to be limited. Thus, the rising fur seal trophic levels are caused mainly by reduced krill availability and dietary changes.

References

- Vaughan DG, Marshall GJ, Connolley WM, Parkinson C, Mulvaney R, et al. (2003) Recent rapid climate warming on the Antarctic Peninsula. *Climate Change* 60: 243–274.
- Ducklow HW, Baker K, Martinson DG, Quetin LB, Ross RM, et al. (2007) Marine pelagic ecosystems: the West Antarctic Peninsula. *Philosophical Transactions Royal Society Series B* 362: 67–94.
- Atkinson A, Siegel V, Pakhomov E, Rothery P (2004) Long-term decline in krill stock and increase in salps within the Southern Ocean. *Nature* 432: 100–103.
- Marr JWS (1962) The natural history and geography of the Antarctic krill (*Euphausia superba* Dana). *Discovery Research* 32: 33–464.
- Miller DG, Hampton I (1989) Biology and Ecology of the Antarctic Krill (*Euphausia superba* Dana): a review. *BIOMASS Science Series* 9: 1–166.
- Hofmann EE, Murphy EJ (2004) Advection, krill, and Antarctic marine ecosystems. *Antarctic Science* 16: 487–499.
- Schofield O, Ducklow HW, Martinson DG, Meredith MP, Moline MA, et al. (2010) How Do Polar Marine Ecosystems Respond to Rapid Climate Change? *Science* 328: 1520–1523.
- Reid K, Watkins JL, Croxall JP, Murphy EJ (1999) Krill population dynamics at South Georgia 1991–1997, based on data from predators and nets. *Marine Ecology Progress Series* 177: 103–114.
- Hobson KA, Piatt JF, Pitocchelli J (1994) Using Stable Isotopes to Determine Seabird Trophic Relationships. *Journal of Animal Ecology* 63: 786–798.
- Cerling TE, Wittemyer G, Rasmussen HB, Vollrath Fritz, Cerling CE, et al. (2006) Stable isotopes in elephant hair document migration patterns and diet changes. *Proceedings of the National Academy of Sciences USA* 103: 371–373.
- Cherel Y, Kernaeguen L, Richard P, Guinet C (2009) Whisker isotopic signature depicts migration patterns and multi-year intra- and inter-individual foraging strategies in fur seals. *Biology Letters* 5: 830–832.
- Hodgson DA, Johnston NM (1997) Inferring seal populations from lake sediments. *Nature* 387: 30–31.
- Sun LG, Xie ZQ, Zhao JL (2000) Palaeoecology - A 3,000-year record of penguin populations. *Nature* 407: 858–858.
- Sun LG, Liu XD, Yin XB, Zhu RB, Xie ZQ, et al. (2004) A 1,500-year record of Antarctic seal populations in response to climate change. *Polar Biology* 27: 495–501.
- Murphy EJ, Watkins JL, Trathan PN, Reid K, Meredith MP, et al. (2007) Spatial and temporal operation of the Scotia Sea ecosystem: a review of large-scale links in a krill centred food web. *Philosophical Transactions Royal Society Series B* 362: 113–148.
- Appleby PG, Jones VJ, Ellis-Evans JC (1995) Radiometric dating of lake sediments from Signy Island (maritime Antarctic): evidence of recent climatic change. *Journal of Paleolimnology* 13: 179–191.
- Yang QC, Sun LG, Kong DM, Huang T, Wang YH (2010) Variation of Antarctic seal population in response to human activities in 20th century. *Chinese Science Bulletin* 55: 1084–1088.
- Liu XD, Sun LG, Yin XB, Zhu RB (2004) Paleocological implications of the nitrogen isotope signatures in the sediments amended by Antarctic seal excrements. *Progress in Nature Science* 14: 786–792.
- Bearhop S, Waldron S, Votier SC, Furness RW (2002) Factors that influence assimilation rates and fractionation of nitrogen and carbon stable isotopes in avian blood and feathers. *Physiological and Biochemical Zoology* 75: 451–458.
- Casaux R, Baroni A, Carlini A (1998) The diet of the Antarctic fur seal *Arctocephalus gazella* at Harmony Point, Nelson Island, South Shetland Islands. *Polar Biology* 20: 424–428.
- Ainley DG, Ballard G, Barton KJ, Karl BJ, Rau GH, et al. (2003) Spatial and temporal variation of diet within a presumed metapopulation of Adie Penguins. *Condor* 105: 95–106.
- Emslie SD, Patterson WP (2007) Abrupt recent shift in delta C-13 and delta N-15 values in Adie penguin eggshell in Antarctica. *Proceedings of the National Academy of Sciences USA* 104: 11666–11669.
- Loeb V, Siegel V, Holm-Hansen O, Hewitt R, Fraser W, et al. (1997) Effects of sea-ice extent and krill or salp dominance on the Antarctic food web. *Nature* 387: 897–900.
- Nicol S, Pauly T, Bindoff NL, Wright S, Thiele D, et al. (2000) Ocean circulation off east Antarctica affects ecosystem structure and sea-ice extent. *Nature* 406: 504–507.
- Rayner NA, Parker DE, Horton EB, Folland CK, Alexander LV, et al. (2003) Global analyses of sea surface temperature, sea ice, and night marine air temperature since the late nineteenth century. *Journal of Geophysical Research* 108: NO. D14, 4407.
- Crosta X, Shemesh A (2002) Reconciling down core anticorrelation of diatom carbon and nitrogen isotopic ratios from the Southern Ocean. *Paleoceanography* 17: 10.1029/2000PA000565.
- Whitehouse MJ, Meredith MP, Rothery P, Atkinson A, Ward P, et al. (2008) Rapid warming of the ocean around South Georgia, Southern Ocean, during the 20th century: Forcings, characteristics and implications for lower trophic levels. *Deep-Sea Research Part I* 55: 1218–1228.
- Hobson KA, Schell DM, Renouf D, Noseworthy E (1996) Stable carbon and nitrogen isotopic fractionation between diet and tissues of captive seals: Implications for dietary reconstructions involving marine mammals. *Canadian Journal of Fisheries and Aquatic Sciences* 53: 528–533.
- Cherel Y, Fontaine C, Richard P, Labat JP (2010) Isotopic niches and trophic levels of myctophid fishes and their predators in the Southern Ocean. *Limnology & Oceanography* 55: 324–332.

Acknowledgments

We thank the Chinese Arctic and Antarctic Administration and Polar Research Institute of China for support in field, and all the people who provided help in field.

Author Contributions

Conceived and designed the experiments: LS. Performed the experiments: TH JS ZC QY. Analyzed the data: LS TH. Wrote the paper: TH LS. Provided help in the data interpretation: YW. Provided insight to the krill ecology: SS.