

Utah State University

DigitalCommons@USU

The Utah Statesman

Students

10-29-2019

The Utah Statesman, October 29, 2019

Utah State University

Follow this and additional works at: <https://digitalcommons.usu.edu/newspapers>

Recommended Citation

Utah State University, "The Utah Statesman, October 29, 2019" (2019). *The Utah Statesman*. 747.
<https://digitalcommons.usu.edu/newspapers/747>

This Book is brought to you for free and open access by the Students at DigitalCommons@USU. It has been accepted for inclusion in The Utah Statesman by an authorized administrator of DigitalCommons@USU. For more information, please contact digitalcommons@usu.edu.



HOUSES ON HAUNTED HILL

The ghostly myths claimed by two USU sorority houses



Alpha Chi Omega Sorority (left) and Kappa Delta Sorority (right) at Utah State University both share stories of ghosts of people who died in their houses haunting the houses.

By Karcin Harris
NEWS STAFF WRITER

Daria Griffith joined the Kappa Delta Sorority while attending Utah State University. She was excited to move into the sorority house in her junior year.

What she wasn't anticipating was being assigned to live in the former room of the resident ghost, Patty.

Griffith, now an Alumnus member of Kappa Delta, said Patty was a student at USU in the 1970s who died either by suicide or from a car accident.

Griffith had her very first encounter with Patty right after she moved into Patty's old bedroom. "The very first night, I was moving stuff in and getting things organized," she said. "I would go back and forth between the bathroom and our

bedroom, just moving things. When I was about to go out of the bedroom and into the bathroom, I walked over to the door and it just shut. It slammed in my face."

Griffith said she looked around for other people or an open window to explain the door slamming and found nothing.

Griffith felt the slamming was a "cue from Patty to go to bed."

The door slamming continued throughout the school year. Griffith said that first encounter was "the most significant thing" for her belief in Patty and noted that "none of the other doors in the hallway would do that."

As she stayed at the Kappa Delta house, Griffith began to feel that Patty was not a vengeful ghost out to torture anyone.

"Now she's kinda the old grandma that tries to

take care of everyone and make sure everyone's doing their homework," she said. "Something that I noticed was every time someone had an instance where Patty was involved, someone was doing something they weren't supposed to. That's what makes me say she's looking out for us."

Griffith mentioned other ways Patty showed her presence, including glasses of water falling to the floor for no reason, doors being locked that shouldn't have been and pictures of Patty's name on the wall vanishing from the camera's SD card.

The Kappa Delta house is not the only sorority house said to be haunted by a ghost.

Liz Stillings, a USU student, is a member of Alpha Chi Omega, and she said the ghost at their house is friendly as well.

"The ghost is harmless and just likes to mess with people," she said. "His name is Lester."

Stillings said Lester was a USU student that dated an Alpha Chi Omega member. When the member broke up with him, he hung himself in the boiler room in the basement of the house.

"Lester still hangs out in the basement," Stillings said. "Lots of girls report things like decorations being knocked over or falling off the walls and sometimes hearing footsteps when no one is around."

Stillings said when anyone goes into the boiler room, they get "instant chills" and she has felt Lester walking behind her in the basement.

Stillings said everyone in the house feels Lester respects everyone as long as they respect him.

— karcinharris@gmail.com

USU may lose access to ride share program

By Josh Wilkinson
NEWS SENIOR WRITER

Students at Utah State University may soon have one less option for transportation.

On Dec. 15, USU will lose its subscription to Zimride, a student ridesharing program, unless the program coordinators at USU successfully raise the remaining \$2,500 required for renewing USU's subscription for another year.

Meg McCarthy and Alexi Lamm, USU Sustainable Transportation Coordinator and USU Sustainability Coordinator respectively, are trying to raise these remaining funds. On Oct. 22, McCarthy and Lamm met with the Utah State University Student Association Executive Council to ask for help in raising the remaining amount of money.

"We're here today because we are in danger of losing [Zimride], and you guys are our last option," McCarthy said during the meeting. "We're coming to you guys to ask if you will fund this program for half of what it costs."

According to Lamm, USU has provided access to Zimride free to students since 2015. Since 2015, a total of 9,030 users have used the service through USU.

Traditionally, the \$6,000 subscription fee has been paid by the USU sustainability carbon offset fund, which is comprised of donations from USU faculty and staff through an optional donation on faculty transportation authorization and reimbursement forms.

However, McCarthy said the travel forms have recently changed, making it more difficult for faculty and staff to contribute as much money as they have in the past to the fund.

"We can cover \$3,000 of it through the donation fund that is coming through staff or faculty, but we don't have the other \$3,000 to be able to cover the cost of this," McCarthy said at the meeting.

Several days after the meeting with the Executive Council, Zimride offered to renew the subscription at a discounted rate for USU, lowering the yearly subscription price to \$5000,



McCarthy said.

Lamm said the subscription fee pays for services offered by Zimride, including a fully contained database system, statistics the program shares with the University, website maintenance and a program that links students up with other travelers.

McCarthy also said using Zimride is a significantly safer option than services such as Uber or Lift. According to McCarthy, people who use

Zimride through USU have to use a university identification number, or the USU A-Number, to access the service.

"There's a record of who took the ride, when they took the ride," McCarthy said. "If anything bad were to happen, there's accountability built into the system."

McCarthy and Lamm also said Zimride is at a

see "Zimride" PAGE 5

RAPE

IS A SCARY WORD, BUT DEVASTATING IF EXPERIENCED

If you have been raped or sexually assaulted, it is not your fault and CAPSA can help. CAPSA is a community based nonprofit which provides support as you choose your path. We believe you and can help you.

Exploring the final frontier

Getaway Special Team making a comeback



Utah State University's Getaway Special Team is working towards their goal of sending a CubeSat into space while also developing students from all majors. PHOTO COURTESY OF Jack Danos

By Kortni Wells
STUDENT LIFE STAFF WRITER

A 10-centimeter tall cube will soon make its way through the galaxies of time and space. An inflatable arm, used to control the satellite, will then be used to carry a payload of food and water up to the International Space Station.

From there an astronaut will send it out into the void of space to start its orbit.

There, it will gather data that engineers will use as inspiration for future projects.

A slight amount of air in lower orbit will hopefully stabilize the arm of the satellite, and like a long tail, will stop it from a continuous spin. This stabilization will help the satellite fly like an arrow.

“The hope,” said USU Getaway Special Team member and electrical team lead Nik Clark, “is that the arm of the satellite, where the payload is, will become a rigid structure when exposed to UV light.”

According to Clark, NASA is interested in knowing if things can be inflated in space, making for a more lightweight and compact structure.

“It also means you can pack things into a small size that later expands into a bigger size,” Clark said.

But none of this is guaranteed. Although Utah State University has been putting engineering experiments into space for four decades, a shift in NASA program-

ming led to a period of scientific stagnation.

The NASA program that was known as Getaway Special once allowed university payloads relatively cheap access to orbit.

A team at Utah State University, aimed at taking advantage of the program, started small with one payload on one shuttle.

The cost was \$15,000 and funded by Gilbert Moore, a former USU faculty member who donated the first payload allotment. As a result, the Getaway Special team, or GAS team, at USU was born.

Jan Sojka was there from the beginning. At the time, he was a postdoctoral fellow, interested in creating a three-dimensional model of the Earth’s upper atmosphere, known as the Ionosphere.

This model was used to predict the environment where the space shuttle, space station and many satellites circulated the Earth.

For his Ph.D. research, he launched three-stage sounding rockets into the northern lights.

Though emotions ran quite high in those launches, he felt the most rewarding feelings came from launching something he built on the space shuttle with students on the USU GAS team.

“I sure am pleased to be a rocket scientist,” Sojka thought as he watched his project come to life in the sky. “It was a sense of pride that I was associated with a student payload on board the shuttle. My payload.”

At least 11 payloads, with three to six experiments on each, were flown during the NASA GAS program.

Then, NASA terminated the GAS program. Few projects left Earth’s atmosphere and USU’s GAS team entered stagnation and faded in and out at USU.

The stars still wait. The future is watching. Now, with a renewed partnership with NASA and 40 years after the initial payload, Utah State has another opportunity at orbit, and team members are committed to building a legacy that fellow Aggies will be proud of for years to come.

Six years ago, past students submitted a proposal to NASA’s CubeSat Launch Initiative. The space agency’s approval paved the way for the return of USU’s GAS team, but there was still a long way to go if USU was to get its experiments back into space.


Chaz Cornwall, the GAS team coordinator, said, while the team’s primary focus has been to produce something functional that gets to space, the projected end result is more than that.

“We’ve been told this project should be abandoned, but really, a big part of this is to prove those people wrong, and show them that we can do this,” Cornwall said.


This past summer, Sojka felt the team was making little progress with its CubeSat, working in a methodical, constructive way. But skepticism and other obstacles weren’t

see “GAS” PAGE 6

TWEETS of the WEEK

- 

@shelby4pres
Today I had brunch with Noelle Cockett and all of my Aggie dreams came true
- 

@DDeva818
I feel bad for all the people I saw today on campus in their winter coats, boots and hats. Seriously, a bunch of peeps in full out winter gear. I mean what are they gonna do when winter actually gets here? They’re gonna be human popsicles. @USUAggies #AggiesAllTheWay
- 

@hi_im_glen
some say that there is a live raccoon in the field house
- 

@JustinFreeves
@USUAggies @USUAdmissions there is no prettier campus in all the land.



Movie Review: 1978’s “Halloween”

By Scott Froehlich
STUDENT LIFE CONTRIBUTOR

Horror movies are in high demand during October, especially on Halloween. We all know the blueprint for what makes a “good” horror movie: blood, gore, the occult, promiscuous teenagers and a killer with an insatiable bloodlust.

No other category of these films captures those elements as well as slasher movies and 1978’s “Halloween” has been attributed as the pioneer of the genre.

The movie takes place in the fictional town of Haddonfield, Illinois, and begins with a 6-year-old boy, Michael Myers, killing his older sister in 1963. After being institutionalized for 15 years, Myers escapes and returns to his hometown to track down his younger sister, Laurie Strode, played by Jamie Lee Curtis. What commences is the methodical stalking of Strode and her friends, with the backdrop of Halloween as an anniversary of Myers killing his other sister.

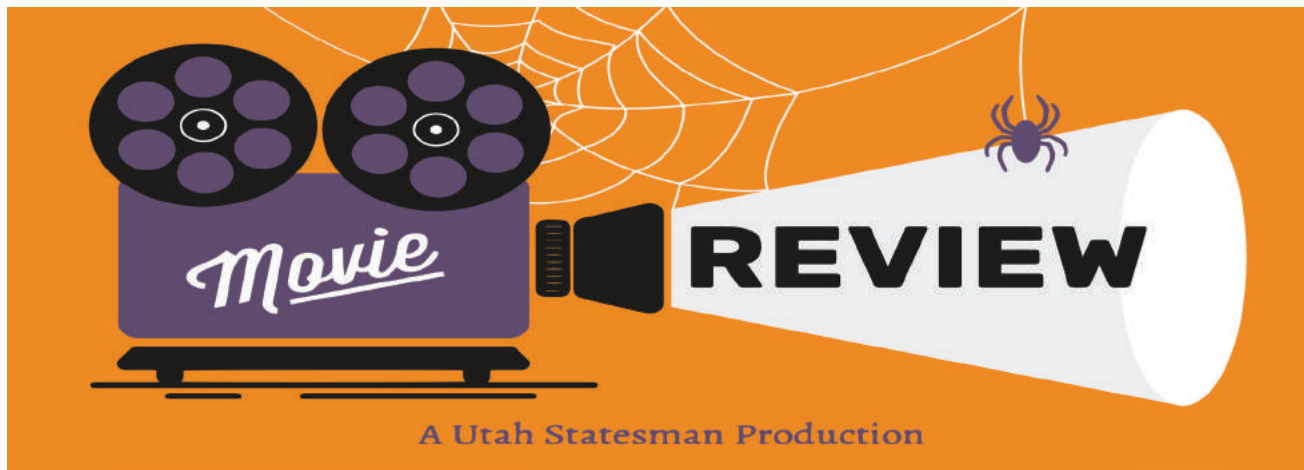
In pursuit of Strode, the Shape, as Myers was referred to in the script, slaughters his sister’s friends. Also featured in the movie is Dr. Sam Loomis, who was Myers’ psychiatrist while he was in the mental hospital and acts as the uncommissioned bounty hunter attempting to return his

patient to the institution. His character provides insight into Myers’ motives, or lack thereof, and fills the audience in on how disturbed the masked murderer truly is.

To him, Myers is more of an evil entity than he is a human being. One of the most chilling scenes in the movie has Loomis describing his first impressions of the troubled 6-year-old.

“I met him 15 years ago,” Loomis says. “I was told there was nothing left. No reason, no conscience, no understanding in even the most rudimentary sense of life or death. I met this 6-year-old child with this blank, pale, emotionless face and the blackest eyes. The Devil’s eyes.”

The movie’s climax sees Myers track down and chase his sister in the ultimate game of cat and mouse. Instead of playing the damsel in distress, Strode holds her own. At one point in the film, Strode asks if the man attacking her was “the Boogeyman.” Loomis simply responds with, “As a matter of fact, it was.”



Now, the plot of the film is straightforward and recognizable as a common theme in horror. It is the execution of the acting and directing, however, that makes this a classic. The movie is rife with long pauses and eerie moments of silence. The audience members are teased with suspense then caught off guard when the action finally takes place.

An underrated aspect of “Halloween” is its soundtrack. Director John Carpenter composed the score himself, with the title track consisting of only four notes played on a synthesizer. The music acts as a pulse for the film, breaking the long periods of silence with shrieking, unpleasant

sounds that accentuate the jump scares and lead the audience down dark halls of the unknown.

The minimalist nature of the soundtrack is a reflection of the overall production of “Halloween.” On a budget of only \$325,000, Carpenter and the rest of his crew had to be creative with what little they had to work with. Because the movie was filmed in California during the spring, not Illinois in the fall, the crew had to spray paint leaves to give the appearance of fall to the warm Southern California neighborhood. Even the mask worn by Michael Myers was just a \$1.98 Captain Kirk mask painted white.

FILE GRAPHIC



One of the goals of USU's Getaway Special Team is to determine if objects can be inflated in space. PHOTO COURTESY OF Jack Danos

“GAS” FROM PAGE 3

enough to stop a determined group of engineers from what they had worked so hard to achieve. Tests failed. Experiments and trials didn’t work. GAS had little direct contact with NASA in the

preliminary process, except a visit from Scott Higginbotham, the director for the NASA CubeSat Launch Initiative during the Small Satellite Conference held at USU. Sojka said he challenged the team in the 40 hours before Higginbotham arrived to “get their act together.”

“They did an excellent job,” Sojka said. “The demonstration worked perfectly, and Higginbotham gave the team a year before he pulls the plug.” Members like Jack Danos, the mechanical team lead, entered the project at a time of uncertainty. “We had several things that could have basically cancelled our mission,” Danos said. “We’re now at the point where assuming we put in the work we’re going to fly this thing to space.” Alex Nelson, the chief engineer, said the team has been revived through the passion and determination of its members. “It started out super frustrating because it felt like whenever we met a barrier, people were telling us we shouldn’t be doing this, but we’ve had so much success and enthusiasm that we are finally breaking down those barriers,” Nelson said. With their preliminary design review, or PDR, behind them, the team is making strides towards its critical design review, or CDR, where the launch date will be set. Sojka is now confident in the team’s ability to succeed. “I find that the team I have now, I think, will be able to pull it off,” Sojka said. Caleb Smith, the GAS communications team lead, explained that most of the teams before them had space projects that usually fell apart right at the PDR stage. “It’s a really cool project very few people get a chance to do,” Smith said. “We’re definitely on the right track. We just have to keep pushing.”

GAS is not just about putting things into space, but is focused on providing opportunities for subsequent cohorts of students to do the same. “Because of the chances that people before us took, I have this great opportunity, and I’d like to be able to continue that for future generations,” Nelson said. The team of 20 members is growing slowly but steadily. GAS continues to welcome new members from any major, regardless of their engineering or non-engineering backgrounds. Emma Hind, a communications major, found the GAS team to be one of the most fulfilling things she has participated in while in college. “I’ve learned a lot more practical skills than I have in class,” Hind said. “It’s given me a lot of real-life experience because I’m actually doing some of the same things I will be doing in the workforce, not just learning it in the classroom.” With a year left to go and preliminary reviews checked off by NASA, the GAS team has reason to celebrate. Where teams of the past failed to deliver, the current team found success. Assuming the team meets its current goals and deadlines, a CubeSat from USU is headed for space in 2020 or 2021. “No undergraduate-led team has put a CubeSat into space from USU,” Cornwall said. “We’re here to make history.” —kortni.marie.wells@aggiemail.usu.edu @kortniwells

“Howl” FROM PAGE 1

The Activities Committee works together for months to plan and create the Howl. The process starts with developing a theme, which is decided by compiling a master list of ideas. Committee members then vote on their top three. From there, they begin developing decoration ideas and marketing strategies. “We really wanted to nail down the promotion this year because, if you don’t have students attend, you don’t have a party,” Robinson said. “We wanted to make people excited for this event.” Shay Schwab has never been to the Howl in her four years at Utah State, and she said she wishes there was more promotion about the extra non-dance events being held this year. “I’m not a big fan of dances or crowds of people, but hearing about the new activities makes it more appealing,” she said. “I had no idea about it until my roommate came back and told me about it, and I wish they just made everyone more aware of what they were doing this year.” Katie Petersen, an activities committee member, moni-

tored the “Starcourt Mall” area of the TSC, which mainly consisted of the International Student Lounge arcade and ice cream. “I’m in charge of just making sure everyone is having a fun time, but mostly making sure they’re safe,” she said. “If I see something going on, I’m going to be an upstander and help out. I don’t want anyone to get hurt.” Along with being the largest Halloween party in Utah, the Howl is also one of the most dangerous nights on campus, with record-high sexual assault reports following it every year. Students are encouraged to stay in groups, alcohol and drugs are forbidden, and multiple campus police officers and Logan City officers are on duty trying to keep students safe. The morning following the Howl, a Timely Warning Notice was sent to students stating that three sexual assaults were reported the night of the Howl, and that police were already investigating. Students are encouraged to reach out to the USU Police if they have any information about these crimes. “We try our best to make the Howl as safe as possible



Several Howl attendees came in a costume including a live snake. PHOTO COURTESY OF Madlyn Petty

by having University Police as well as Logan City Police there, and all of our volunteers get trained to handle situations and be upstanders,” Robinson said. Another way they’ve attempted to keep the Howl safe is by creating a stricter capacity for the event and the dance, now only selling 5,500 tickets. “We used to cap it at 7,000 tickets and they wouldn’t cap the dance, so there would be way to many people in the field house and it would get sketchy,” Robinson said. “Since we’ve scaled back the amount of people allowed at the Howl, it’s become a lot safer of an event. It allows our volunteers to have a better way to view the situation and it disperses the people, so if there’s a situation in the middle of a cluster of people,

we’re more likely to be able to get there.” The Howl, as the activities committee explained, is held in hopes of creating a space for students to escape the stressful college environment, have a good time, bond with their friends and meet new people, and they hope they achieved that for as many students as possible this year. “I hope people leave the Howl saying ‘Wow, that was so much fun,’” Robinson said. “I want people to say they felt safe, they enjoyed the activities and dance, and that it was a positive experience and worth their time. That’s really what I hope for this year, and I think we can accomplish it.” —nichole.bresee@aggiemail.usu.edu @breseenichole



FILE PHOTO

“Zimride” FROM PAGE 3

significantly lower cost than similar services like Uber or Lift, as students and faculty would be carpooling with a driver or passenger already headed in the direction they need to go. “It’s different than Uber or Lift because the person driving is somebody who is taking a trip, and they’re willing to share the extra seats in their car,” Lamm said. According to Lamm, prices are determined by the driver of the vehicle and are usually in the \$10-\$15 range, as opposed to the higher costs of other ridesharing services. “Uber or Lift would be like \$100 from Logan to Salt Lake,” McCarthy said. “Man, when I was a student, I did not have \$100 to spare.” However, Zimride does have some drawbacks. According to Lamm and McCarthy, destinations are determined by where the drivers are headed, not by where the passengers

need to go. This means that passengers who need to get to areas outside of the Wasatch front may have a harder time finding transportation. “Because not everybody uses it, trips that aren’t along the Wasatch front are a little bit trickier,” McCarthy said. “But it does allow a lot of students a ride when they don’t have it or a way to justify a trip when maybe they wouldn’t otherwise be able to do it.” USUSA President Sami Ahmed said during the meeting that the executive council would discuss whether or not USUSA would help fund USU’s Zimride subscription. USU will have to inform Zimride of their decision to renew or cancel their subscription by Nov. 13. If the subscription is canceled, students and faculty can still use Zimride by up until Dec. 15. —jshwilki@gmail.com @jshwilki



Activities at the Howl expanded this year to include arcade games, a haunted house, and virtual reality experiences. PHOTO COURTESY OF Madlyn Petty

“Clean Up” FROM PAGE 1

ple. I think it’s a popular theme to have picked, so i think that’s awesome,” Daria Griffith, a volunteer, said. Benson said the process was simple to pick a theme. The activities committee went

through about 80 to 90 different themes and narrowed it down until an anonymous majority vote chose “Stranger Things.” Brynne Shoemaker, a lead, said, “I think it’s really fun. I love that it’s a good time to have this theme, too, because season four just came out. It’s

not too far gone. I like it, too, because it’s kind of eerie and creepy, so it goes along with the theme of Halloween.” “I’ve always heard that going to Howl is one experience, and volunteering is a totally different experience. From what I’ve heard, it’s more fun and better,” Benson said.

For information email debbie@skithebeav.com or call 435-753-0921

THE BEAVER MOUNTAIN SNOWSPORTS SCHOOL IS ACCEPTING APPLICATIONS FOR

PART-TIME INSTRUCTORS IN SKIING AND SNOWBOARDING

FULL-TIME AND PART-TIME OFFICE ASSISTANTS

APPLICATION FORMS CAN BE OBTAINED AT WWW.SKITHEBEAV.COM OR AT THE BEAVER MOUNTAIN OFFICE

PLEASE SUBMIT AN APPLICATION AT THE BEAVER MOUNTAIN OFFICE 1351 E 700 N, LOGAN, UT 84321 OR EMAIL IT TO DEBBIE@SKITHEBEAV.COM

NOW HIRING

beaver mountain

WWW.SKITHEBEAV.COM

USU set to host Mountain West cross country championships



Utah State is set to host the MW cross country championships on Saturday, with both the men's and women's squads putting together strong seasons and looking to compete for a conference title.

FILE PHOTO

By Dalton Renshaw
SPORTS CONTENT MANAGER

For the first time in program history, Logan, Utah will be host to the Mountain West Championships Friday, Nov. 1.

Coming to Logan will be two of the top 30 men's programs in the nation and four of the top 40, including Utah State, who is currently ranked 22. Boise State is the only team from the Mountain West ahead of the Aggies in the rankings at 18. The women are equally as accomplished this season, if not more, with three of the top 15 teams in the nation hailing from the Mountain West.

The Aggies have been one of the most consistent programs in the conference this season and will be able to show off their talents in front of the home crowd. In addition to being ranked in the top 25, the men's program has won four of six competitions it's been

invited to and come second in another. The Utah State women have won four competitions as well and have received two Mountain West player of the week awards.

This past weekend, both the men and women won the Utah Open held in Salt Lake City and had some standout individual performances.

"It was good to get the team win for both the men and the women," said third-year USU head coach Artie Gulden. "The women's race spread out a little bit more than we thought it would early on, but our ladies did a good job of staying patient and working the latter part of the race. We made up a lot of ground the last mile, which was good. A lot of our ladies ran tough, and some of them ran by far their best races in Utah State uniforms."

Utah State sophomore Devin Pancake finished first in the men's 6k race, while sophomore Leann Larkin finished second in the

women's 5k. Although cross country can be an individual sport, teamwork is one of the biggest ways to succeed and earn a win, and it's something the Aggies excel at.

"For the guys, we packed up well and worked together," Gulden said. "We had a group of five together for probably at least half the race, which was good to see them work together. Like the ladies, they worked the latter part of the race and pulled away from Utah Valley."

Utah State's men's and women's cross country teams will be back in action this weekend, as they host the Mountain West Conference Cross Country Championship on at the Steve and Dona Reeder Cross Country Course. The men's 7-kilometer race will begin at 10 a.m., followed by the women's 5-kilometer race at 10:45 a.m.

Live the Dream...
Work in *ALASKA!*

NOW HIRING SUMMER 2020

DO YOU LOVE TRAVEL & ADVENTURE?
Come learn more about the
life of a driver/guide!

- Seasonal Positions
- Bonuses Available
- Housing Benefits
- Paid CDL training (21 yrs +)
- Gain Networking & Public Speaking Experience

Visit us!

NOV 12th - Business Bldg.

NOV 13th - TSC 1st Floor

AlaskaCoachTours.com

KOCH

SCHOLARS

PROGRAM

The Koch Scholars Program (KSP) is a semester-long paid reading group designed to engage undergraduate students in meaningful discussions. Participants will receive \$1,000.

- Meetings are held on Tuesdays at 5:00 pm; dinner is provided
- Participants are given 15 books
- Students join discussions online and in person
- Students of any academic background are welcome to apply

Apply online before November 1st

Find out more at www.growthopportunity.org/student/koch-scholars

The Center for
Growth and Opportunity

at Utah State University

**BEST** - OF - **LOGAN**

2020 BALLOT

Select the candidate or write-in who you think is best! Must vote for a minimum **three** categories to be counted.

PIZZA

☐ _____

GROCERY STORE

☐ _____

BREAKFAST

☐ _____

SANDWICH

☐ _____

APARTMENT

☐ _____

BURGER

☐ _____

MEXICAN FOOD

☐ Cafe Sabor _____☐ _____

BANK

☐ _____

FRATERNITY

☐ Alpha Sigma Phi _____☐ _____

COFFEE SHOP

☐ _____

RESTAURANT

☐ _____

SORORITY

☐ Alpha Chi Omega _____☐ Kappa Delta _____☐ _____

STUDY SPOT

☐ _____

ON-CAMPUS FOOD

☐ _____

SPORTING GOODS

☐ _____

DATE NIGHT SPOT

☐ _____

HIKING TRAIL

☐ _____

JEWELRY STORE

☐ _____

Bring completed ballot to TSC 118 or go to usustatesman.com/best-of-logan



GRAPHIC BY Keith Wilson

Office Debates: Candy Corn

How does the classic Halloween treat measure up against the Kit Kats and Reeses of the world?

LOVE

While I can't match the overall intensity some of my coworkers seem to possess in alarming quantities **cough, Daniel, cough.** I feel it is my job as the opinion manager at the Statesman to push back on the tide of bitter libel and voice some much needed support for a delightful, colorful snack that is as synonymous with Halloween as Santa is with Christmas. And so, in that festive spirit, I choose to write in a manner of cheer and goodwill, rather than angst and terrible bitterness.

If Halloween had a taste, it

Candy corn is to candy what vanilla ice cream is to ice cream. No one thinks "wow, you know what my life is missing, vanilla ice cream." But we gladly eat it when it's offered.

Despite what my colleagues say candy corn is not that bad! Yeah it may be pure sugar, have

would be that of the sweetest ambrosia that is candy corn. So many wonderful childhood memories are associated with that unique taste and singular texture. And everytime somebody eats the candy, they are flooded with a sense of gratitude for the immense privilege of simply partaking.

And not content being limited to pleasing just one human sense, candy corn is also a vivid mixture of orange, yellow and white, catching and pleasing the eye for all who gaze on its triangular grandeur.

We don't talk about it as if it just killed our first born child. So why should candy corn receive the same treatment? No one is proclaiming candy corn is the best piece of candy

a chalky aftertaste, and cause cavities BUT it's a holiday specific candy! I think we should

Candy corn is not just a treat. It's an experience, and one I enjoy having each year on October 31.

To hate candy corn is to hate your own taste buds, as they're clearly the things at fault in this eating equation. To blame an innocent sweet for your own shortcomings is a tragedy.

I hope all those who disagree with me here at the Statesman get the help they need. They've obviously never experienced true happiness, and I pity them.

-- Daedan Olander, opinion content manager

to walk this earth, but how can you say no to a bowl of colored sugar crystals during spooky season?

-- Alison Berg, news content manager

all be in more support of it! -- Savannah Knapp, Graphic Design Manager

HATE

Candy corn is an absolute abomination. No one eats several pieces of candy corn and thinks, "That was a pleasant experience." A worse candy has never graced my palate. It is a depressing and lachrymose globule of plastic which would be put to better use if it were melted and made into an adhesive to fix the leaky pipe under the kitchen sink. Fun fact: when Ron Swanson from Parks and Recreations said,

Candy corn has never — and WILL never — be the preferred candy of Halloween. Unless of course you're asking your local dentist what he gives away to his patients to ensure your cavity comes with a little side of unhappiness. *USA Today* recently released a poll of the most-favored candies in America, with Reese's taking 36% of the

"An hour ago a giant fireball consumed my entire face and it was far preferable to spending another second with you," he was actually talking about candy corn.

I'm sure the creators of this pathetic excuse of candy meant well, but the road to hell is paved with good intentions. Then again, I'm not sure they ever had good intentions. How else could you set out to make a candy and end up

vote. Somehow, candy corn came in fifth with 6% of the vote, proving that six percent of Americans had to deal with the horrific experience of candy corn lobbyists breaking into their homes and forcing them at gunpoint to reply to the over-the-phone survey in candy corn's favor. When Jelly Belly was perfecting the Harry Potter themed Bertie Bott's

creating the culinary equivalent of Satan's feces? Candy corn is a conspiracy, designed solely to rob us of the joy derived from actual candy. Give me literally any other candy instead. Give me a swift kick in the mouth. Force-feed me a bag of sawdust. Just keep your nasty-ass candy corn away from me.

-- Daniel Hansen, managing editor

jelly beans, the makers were tempted to replace the likes of earwax, rotten egg, vomit, dirt, earthworm and booger from the flavors with candy corn because it's essentially the same experience for those unlucky enough to have the taste touch their palates.

-- Dalton Renshaw, sports content manager

Have an opinion you'd like to share? Email your letter to opinion@usustatesman.com.

Letters must not contain personal attacks or other inappropriate language and should be limited to 400 words or less. Anonymous letters will also not be published; please include your name and a phone number or email address (neither of which will be published).

Letters received by The Utah Statesman will be published online at www.usustatesman.com, as well as in the print issue of the Statesman, depending on space.



Letters to the editor

Medium

| | | | | | | | | |
|---|---|---|---|--|---|---|---|---|
| 1 | 3 | | | | 5 | 9 | | 4 |
| | 9 | | | | 8 | | 3 | 1 |
| | | | | | 9 | 6 | 2 | |
| | 1 | | | | 2 | | | 3 |
| | | | | | | | | |
| 4 | | | 9 | | | | 1 | |
| | 6 | 2 | 5 | | | | | |
| 8 | 4 | | 2 | | | | 9 | |
| 9 | | 3 | 7 | | | | 6 | 2 |

© Puzzles provided by sudokusolver.com

SOLUTION FOR : 10/22/2019

TO PLAY: Complete the grid so that every row, column and every 3x3 box contains the digits 1 to 9. There is no guessing or math involved, just use logic to solve.

Create and solve your
Sudoku puzzles for FREE.

Play Sudoku and win prizes at:
PRIZESUDOKU.COM

The Sudoku Source of "The Utah Statesman".

Easy

| | | | | | | | | |
|---|---|---|---|---|---|---|---|---|
| 9 | 4 | 8 | 1 | 5 | 6 | 3 | 2 | 7 |
| 5 | 2 | 6 | 7 | 3 | 9 | 1 | 4 | 8 |
| 7 | 3 | 1 | 8 | 4 | 2 | 5 | 9 | 6 |
| 6 | 5 | 3 | 9 | 1 | 7 | 2 | 8 | 4 |
| 4 | 8 | 9 | 6 | 2 | 5 | 7 | 3 | 1 |
| 2 | 1 | 7 | 4 | 8 | 3 | 9 | 6 | 5 |
| 1 | 9 | 4 | 2 | 7 | 8 | 6 | 5 | 3 |
| 3 | 7 | 2 | 5 | 6 | 4 | 8 | 1 | 9 |
| 8 | 6 | 5 | 3 | 9 | 1 | 4 | 7 | 2 |

CLASSIFIED ADS

Automotive

DONATE YOUR CAR TO UNITED BREAST CANCER FOUNDATION! Your donation helps education, prevention & support programs. FAST FREE PICKUP - 24 HR RESPONSE - TAX DEDUCTION 1-855-507-2691
DONATE YOUR CAR, TRUCK OR BOAT TO HERITAGE FOR THE BLIND. Free 3 Day Vacation, Tax Deductible, Free Towing, All Paperwork Taken Care Of.
CALL 1-855-408-2196

Building Materials

METAL ROOF/WALL Panels, Pre-engineered Metal Buildings. Mill prices for sheeting coil are at a 4 year low. You get the savings. 17 Colors prime material, cut to your exact length. CO Building Systems 1-800-CO-BLDGS

Health & Nutrition

Portable Oxygen Concentrator May Be Covered by Medicare! Reclaim independence and mobility with the compact design and long-lasting battery of Inogen One. Free information kit! Call 877-691-4639

Miscellaneous

DISH Network \$59.99 For 190 Channels! Add High Speed Internet for ONLY \$19.95/month. Call Today for \$100 Gift Card! Best Value & Technology. FREE Installation. Call 1-866-360-6959 (some restrictions apply)
INVENTORS - FREE INFORMATION PACKAGE Have your product idea developed affordably by the Research & Development pros and presented to manufacturers. Call 1-877-649-5574 for a Free Idea Starter Guide. Submit your idea for a free consultation. Get NFL Sunday Ticket FREE w/ DIRECTV Choice All-Included Package. \$59.99/month for 12 months. 185 Channels PLUS Thousands of Shows/ Movies On Demand. FREE Genie HD DVR Upgrade. Call 1-833-599-6474 or satellitedealnow.com/utah
Frontier Communications Internet Bundles. Serious Speed! Serious Value! Broadband Max - \$19.99/mo or Broadband

Ultra - \$67.97/mo. Both Include FREE Wi Fi Router. CALL For Details! - 1-866-307-4705
HughesNet Satellite Internet - 25mbps starting at \$49.99/mo! Get More Data FREE Off-Peak Data. FAST download speeds. WiFi built in! FREE Standard Installation for lease customers! Limited Time, Call 1-844-294-9882
DIRECTV NOW. No Satellite Needed. \$40/month. 65 Channels. Stream Breaking News, Live Events, Sports & On Demand Titles. No Annual Contract. No Commitment. CALL 1-877-927-4411
Stay in your home longer with an American Standard Walk-In Bathtub. Receive up to \$1,500 off, including a free toilet, and a lifetime warranty on the tub and installation! Call us at 1-877-838-9074 or visit www.walkintubquote.com/utah
Earthlink High Speed Internet. As Low As \$14.95/month (for the first 3 months.) Reliable High Speed Fiber Optic Technology. Stream Videos, Music and More! Call Earthlink Today 1-844-240-1769
Put on your TV Ears and hear TV with unmatched clarity. TV Ears Original were originally \$129.95 - NOW WITH THIS SPECIAL OFFER are only \$59.95 with code MCB59! Call 1-866-233-2402
Two great new offers from AT&T Wireless! Ask how to get the Next Generation Samsung Galaxy S10e FREE. FREE iPhone with AT&Ts Buy one, Give One. While supplies last! CALL 1-866-717-7052 or www.freephonesnow.com//utah

Personals

Meet singles right now! No paid operators, just real people like you. Browse greetings, exchange messages and connect live. Try it free. Call now: 844-400-8738

SERVICES OFFERED

Paper Polisher
Term paper? Thesis? Professional Editor, 20+ years experience
Let me turn your draft into the document you meant it to be. Rates negotiable. Email PaperPolisher@yahoo.com

APARTMENTS FOR RENT

Biggest Private Room at the 900 Factory for Spring Semester!
Take over my lease for Spring Semester at the Factory! Its the most fun you'll have at school. Check out link for all the amenities, its like a country club. I'm moving out of state. <https://900factory.com/>
I have the biggest room in the apartment, everything is brand new at the factory so very modern. YOU'LL ALSO GET MY RESERVED PARKING PASS RIGHT OUTSIDE! No

MISSION STATEMENT

Connect members of the Aggie community and provide a voice for all through impactful, relevant and diverse multimedia coverage.



COMIC BY Keith Wilson

walking!
\$470 rent
\$65 utilities
I WILL PAY \$300 towards your first month IF YOU TAKE OVER MY CONTRACT! Great deal, call me today! 70two-85nine-928two
GO AGGIES!! UTAH STATE UNIVERSITY USU
No advertisers or scammers
Email malibustacye2@yahoo.com

ANNOUNCEMENTS

Paper Polisher

Term paper? Thesis? Professional Editor, 20+ years experience
Let me turn your draft into the document you meant it to be. Rates negotiable. PaperPolisher@yahoo.com
Email PaperPolisher@yahoo.com

CONNECT WITH US



@UTAHSTATESMAN



and also visit utahstatesman.com for more stories, images and videos.



UtahStateUniversity STUDENT MEDIA

Student-run newspaper for Utah State University since 1902. Reporting online 24/7. Printed each Tuesday of the school year

THE BOARD

Daniel Hansen
managing editor
editor@usustatesman.com
435-797-1742

Alison Berg
news manager
news@usustatesman.com

Dalton Renshaw
sports manager
sports@usustatesman.com

Shelby Smith
student life manager
life@usustatesman.com

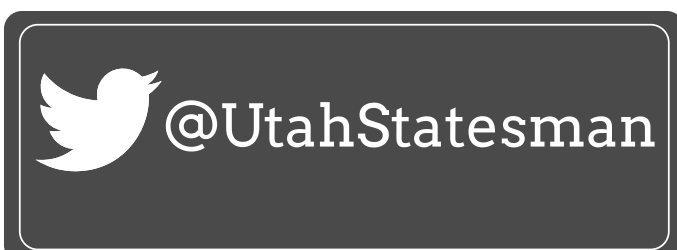
Daedan Olander
opinion manager
opinion@usustatesman.com

Savannah Knapp
design manager
design@usustatesman.com

Chantelle McCall
photo manager
photo@usustatesman.com

Klaus VanZanten
video manager
video@usustatesman.com

HAVE A STORY TIP OR IDEA?
CONTACT OUR NEWSROOM:
435-797-1775 OR EMAIL:
EDITOR@USUSTATESMAN.COM



Dental Insurance

Call for dental coverage today **to help save money on big dental bills.**

This is real dental insurance from Physicians Mutual Insurance Company that helps pay for over 350 procedures – cleanings, fillings, crowns, even dentures.

- **No annual maximum**, no deductible
- See any dentist you want – including your own
- Over 50? Coverage as low as \$1 per day

Call now to get this **FREE** Information Kit
1-888-919-4729
dental50plus.com/utah

*Individual Plan. Coverage not available in all states. Acceptance guaranteed for one insurance policy/certificate of this type. Contact us for complete details about this insurance solicitation. This specific offer is not available in CO, NY, call 1-800-969-4781 or respond for similar offer. Certificate C250A (ID: C250E; PA: C250Q); Insurance Policy P150 (GA: P150GA; NE: P150NY; OK: P150OK; TN: P150TN) 6197

AW10-1034

| C | | CALENDAR | |  5 25 L H TUESDAY |  9 28 L H WEDNESDAY |  16 36 L H THURSDAY |  16 43 L H FRIDAY |  22 48 L H SATURDAY | 5 DAY FORECAST  | | |
|--|--|---|--|--|---|--|---|---|--|--|--|
| TUESDAY | | WEDNESDAY | | THURSDAY | | FRIDAY | | SATURDAY | | MONDAY | |
| 10/29 | | 10/30 | | 10/31 | | 11/1 | | 11/2 | | 11/4 | |
| IOGP Pizza and Politics 4:00 pm David B. Haight Center Logan, UT | | Inclusive Excellence Symposium feat. Pres. Noelle Cockett 8:30 am - 4:30 pm Eccles Conference Center Logan, UT | | Huntsman Trick or Treat 9:00 am - 3:00 pm Huntsman Hall Logan, UT | | Day of the Dead Procession 11:30 am Old Main/Quad area Logan, UT | | Community Day of the Dead procession 11:00 am 199 North Main Street Logan, UT | | Public Forum During USUSA Academic Senate Meeting 4:00 pm TSC 322 Logan, UT | |
| Philosophobia: 'Hereditary' 7:00 pm Old Main Room 115 Logan, UT | | AMSA Blood Drive All Day TSC International Lounge Logan, UT | | Trick or Treat with the Retailers 3:00 pm Cache Valley Mall 1300 N Main Street Logan, UT | | Dia de Los Muertos Community Event 4:00 pm TSC International Lounge Logan, UT | | Witchtrial / Ape \$hit / Zodiac Killer + more at WhySound 6:30 pm \$5 WhySound Venue 30 Federal Avenue Logan, UT | | Women in Research Night 6:00 pm TSC Ballroom Logan, UT | |
| Jazz Kicks 7:00 pm Russell/Wanlass Performance Hall Logan, UT | | Jazz Concert Series 7:00 pm The Cache Venue 119 South Main Street Logan, UT | | Halloween Carnival 4:00 pm The Whittier Community Center 290 North 400 East Logan, UT | | Day of the Dead Dance 7:00 pm TSC Logan, UT | | Music Therapy Muses Concert 7:30 pm Russell/Wanlass Performance Hall Logan, UT | | Lysergic Ashes // Golden Green Funz // TBA 7:30 pm \$7 WhySound Venue 30 Federal Avenue Logan, UT | |
| USU Jazz Jam with Ulysses Owens Jr. 7:00 pm 256 North Main Street Logan, UT | | Fright Nite 7:00 pm Old Main Room 225 Logan, UT | | USUSA Latin Dance 8:00 pm HPER Room 102 Logan, UT | | Mythic Valley // JD & the Brass Saddle Band // Cache Highlanders 7:30 pm \$8 WhySound Venue 30 Federal Avenue Logan, UT | | | | Percussion Ensembles 7:30 pm Daines Concert Hall Logan, UT | |
| | | Halloween at the HPER 7:30 pm HPER Building Logan, UT | | Rocky Horror Picture Show Midnight Utah Theatre 18 West Center Street Logan, UT | | | | | | | |

ADD YOUR EVENT AT [USUSTATESMAN.COM/EVENTS](https://usustatesman.com/events)
Deadline for calendar submissions is Sunday at midnight.

WANTED

MANAGING EDITOR

APPLY ON AGGIE HANDSHAKE

JOB # 1319724

ACCEPTING APPLICATIONS UNTIL NOVEMBER 1 @ 4:00 PM

IF YOU HAVE QUESTIONS, STOP BY THE USU STUDENT MEDIA OFFICE IN TSC 118,
CALL (435) 797-1775, OR EMAIL EDITOR@USUSTATESMAN.COM