

# THE SOCIAL DYNAMICS OF PROTECTED AREA CENTERED ECOSYSTEMS

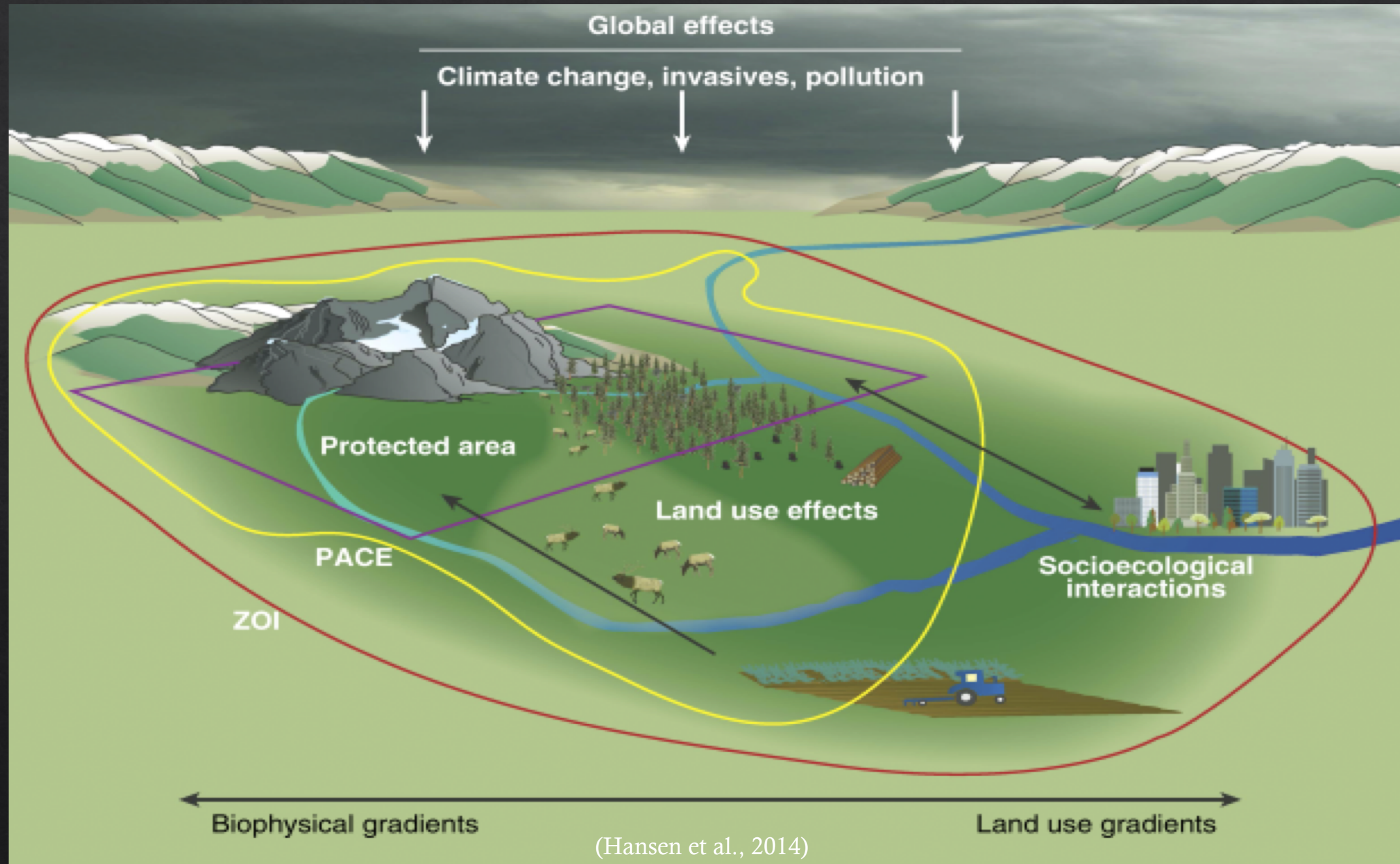
Ryan Tarver

PhD Student

Department of Environment & Society

Quinney College of Natural Resources

# Protected Area Centered Ecosystem(PACE)

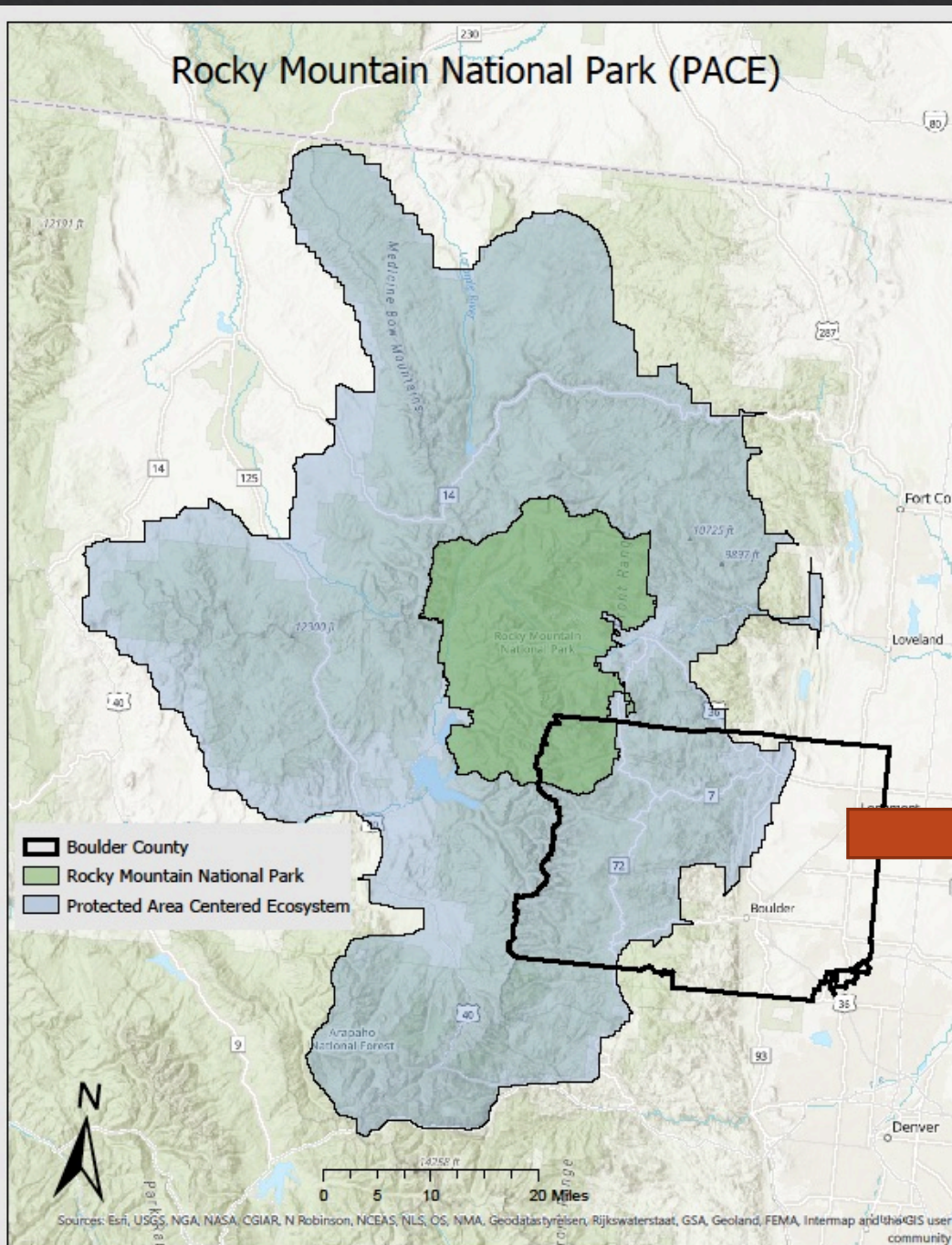




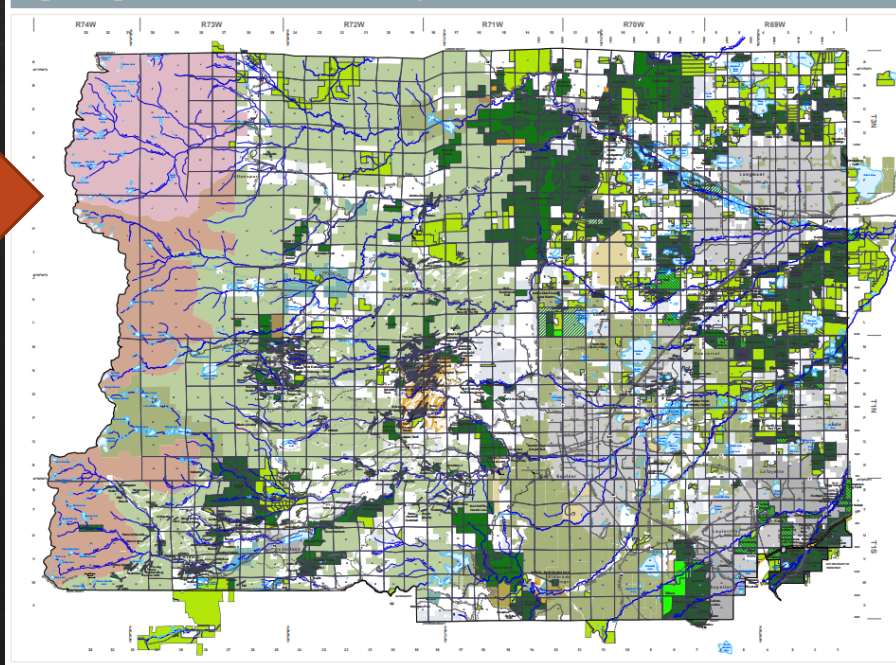
# One PACE... Many Managers

The various governing agencies and organizations collectively make up a **management mosaic**

October 2017



Open Space in Boulder County



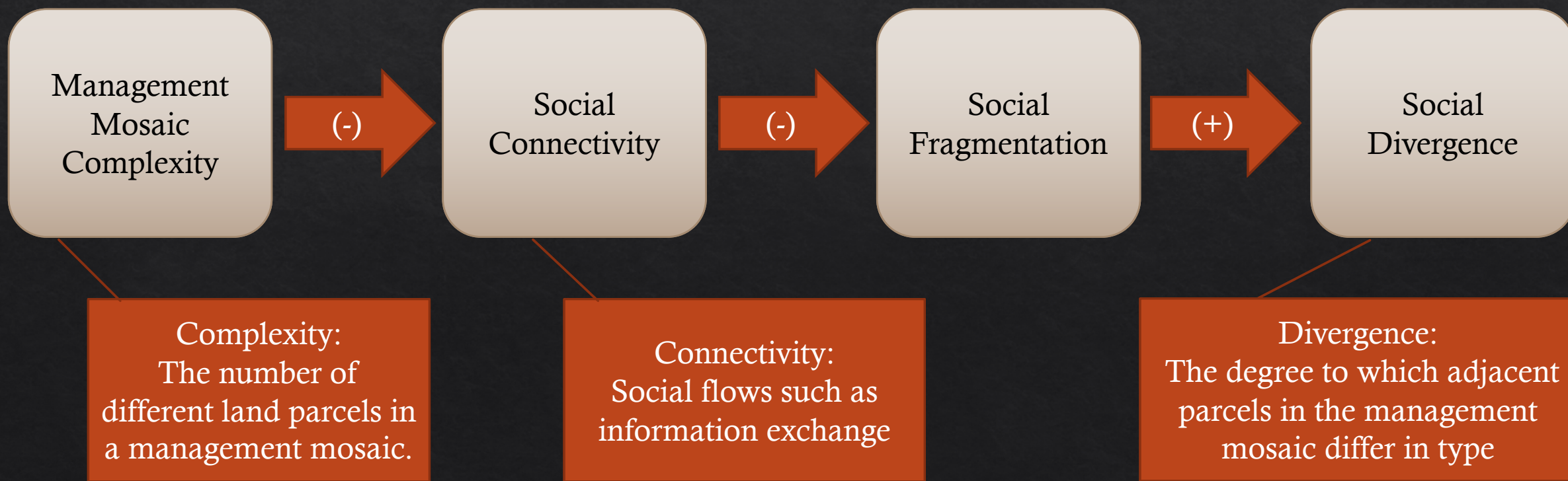
- County Open Space
- County Conservation Easement  
or Other Restriction on Property Use  
Deed Restrictions & Restrictive Covenants  
Private Property, No Public Access
- Joint County/City Open Space
- County Option Parcels
- County Closed Areas
- County Seasonal Closure Areas \*
- City Parks and Open Space
- State Land Board
- State Parks
- Indian Peaks Wilderness
- USFS Land
- BLM Land
- Rocky Mountain National Park
- Other Public Lands
- Non-County Conservation Easements
- Subdivisions or Platted Area
- Incorporated Area



# Research Question

How does a **complex** and **divergent** management mosaic impact **connectivity** of the social landscape?

## Hypothetical Relationships Among Key Elements





# Methodology

## Semi-Structured Interviews

- Land Managers:
  - Federal & State Agencies
  - Non-governmental Organizations

### *Study Areas:*

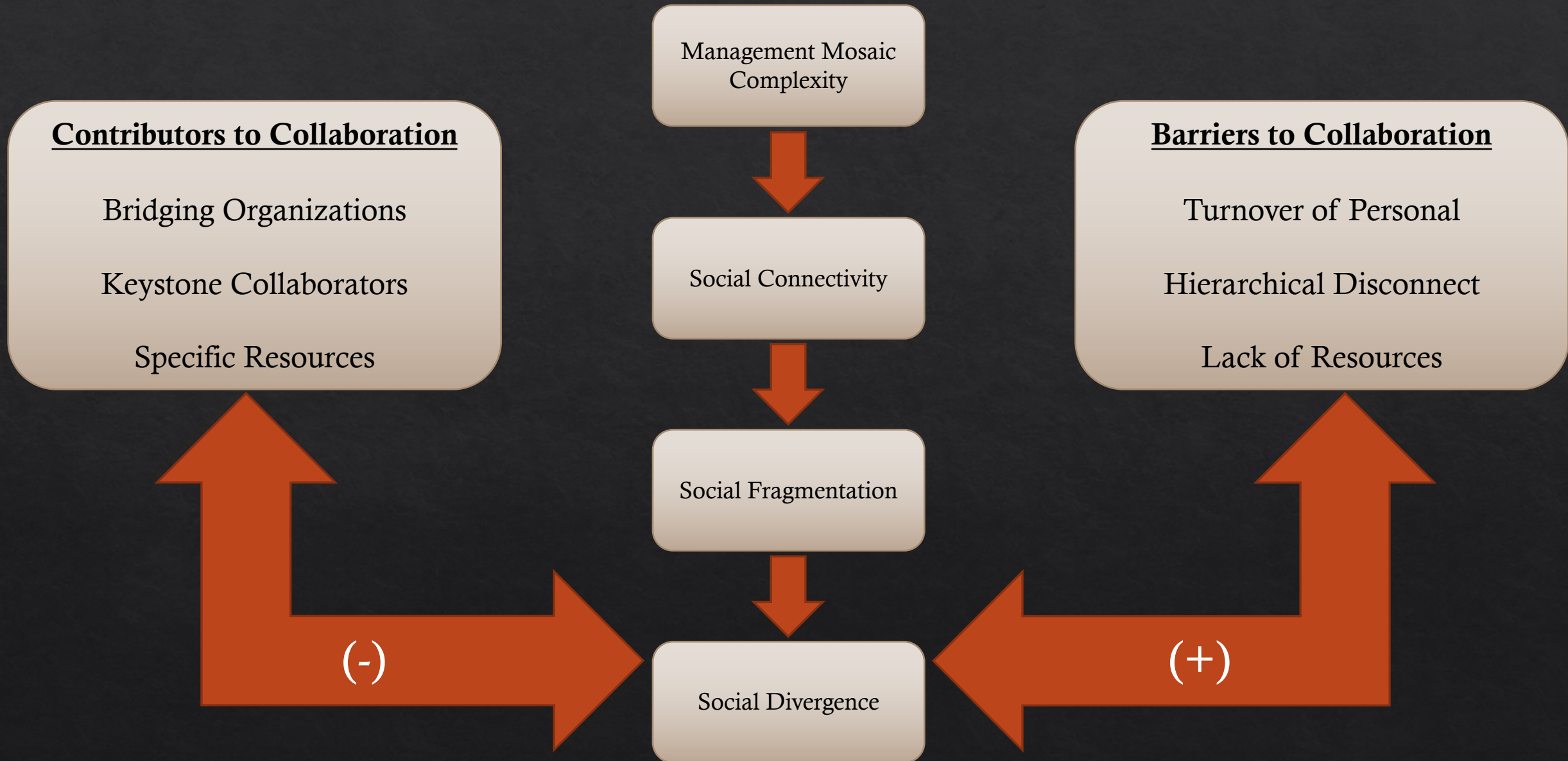
- Rocky Mountain National Park
- Grand Canyon National Park
- Yellowstone National Park
- Great Smokey Mountain National Park
- Lassen Volcanic National Park

(Each park represents the center of a PACE)

### Completed Interview:

- Rocky Mountain National Park: 10
- Grand Canyon National Park: 9
- Great Smokey Mountain Nations Park (ongoing): 7

# Emerging Themes





# References

- Abrams, J. B., Gosnell, H., Gill, N. J., & Klepeis, P. J. (2012). Re-creating the rural, reconstructing nature: An international literature review of the environmental implications of amenity migration. *Conservation and Society*, 10(3), 270.
- Brody, S. D. (2003). Measuring the effects of stakeholder participation on the quality of local plans based on the principles of collaborative ecosystem management. *Journal of planning education and research*, 22(4), 407-419.
- Brunckhorst, D. J. (2002). Institutions to sustain ecological and social systems. *Ecological Management & Restoration*, 3(2), 108-116.
- Hansen, A. J., N. Piekielek, C. Davis, J. Haas, D. M. Theobald, J. E. Gross, W. B. Monahan, E. Olliff, S. W. Running, Exposure of US National Parks to land use and climate change 1900-2100. *Ecological Applications* 24, 484–502 (2014).
- Hansen, A. J., R. DeFries, Land use change around nature reserves: implications for sustaining biodiversity. *Ecological Applications* 17, 972-973 (2007).
- Holcomb, C.M., T.D. Sisk, B.G. Dickson, S.E. Sesnie and E.N. Aumack. (2013). *Administrative boundaries and ecological divergence: The divided history and coordinated future of land management on the Kaibab Plateau, Arizona, USA*. The Colorado Plateau V. University of Arizona Press, Tucson, AZ.
- International Union for Conservation of Nature (IUCN). (2008). *Guidelines for applying protected area management categories*. 11.



# Questions

## Contributors to Collaboration

Bridging Organizations  
Keystone Collaborators  
Specific Resources

Management  
Mosaic  
Complexity

Social  
Connectivity

Social  
Fragmentation

Social  
Divergence

## Barriers to Collaboration

Turnover of Personal  
Hierarchical Disconnect  
Lack of Resources

(-)

(+)

