

Utah State University

DigitalCommons@USU

The Utah Statesman

Students

1-29-1953

Student Life, January 29, 1953, Vol. 40, No. 15

Utah State University

Follow this and additional works at: <https://digitalcommons.usu.edu/newspapers>

Recommended Citation

Utah State University, "Student Life, January 29, 1953, Vol. 40, No. 15" (1953). *The Utah Statesman*. 1338.
<https://digitalcommons.usu.edu/newspapers/1338>

This Book is brought to you for free and open access by the Students at DigitalCommons@USU. It has been accepted for inclusion in The Utah Statesman by an authorized administrator of DigitalCommons@USU. For more information, please contact digitalcommons@usu.edu.



Student Life

Give Your Blood

Monday, Tues.



Shopping high for next week's Dance Revue are, left to right: Lu Wallace, Joyce Barkle and Margaret Fletcher. They and 48 other dancers will go to the main auditorium, Wednesday at 8:15 p.m., in the main auditorium. Admission is by studentbody card.

PE Dance Revue Next Wednesday

Featuring a variety of dance types, a dance revue sponsored by the Physical Education and Recreation Department will be presented next Wednesday at 8:15 p.m. in the main auditorium. Some 40 dancers will participate in the revue, which is being directed by Pauline Fuller of the P.E. department.

Tap, novelty, character, ballroom, rumba, samba, tango, Hawaiian, and acrobatic forms of dancing will be included in the revue.

Admission will be by faculty studentbody cards, or a 50 cent general admission charge. There are no reserved seats.

Personnel Listed
Accompanists for the production are Dave Rae Righy, Yvonne Arkhild, and Barbara Burnett. Backer is George Tanner, while working include Dick Wain, stage manager; Bill Jensen, lighting; Lela Davis, publicity; and Margaret Fletcher, program. Dance numbers will include "New Corps", a military tap; "Hot Box Novelty", "Did You Ever See A Dream--", "Sleep by Beauty", ballet; "Adagio duet"; "Ritual of the Savage"; "Ballet Tchaikovsky's 'Nutcracker Suite'"; "Dance of the Reed Flute"; "Waltz of the Flowers"; "Hoodlums"; "Ta Ra Ra Boom Shoo"; a can-can; "Slaughter on 10th Avenue"; "Tee for Two"; "Big Time Rhythm"; "Misty Fingert"; "The Snowflake"; "Hawaiian"; "Ragtime"; "The Good Old Summer"; "Finale".

Dancers are Valera Myrskis, Margaret Fletcher, Joyce Barkle, Dave Rae Righy, Misty Fingert, Bill Schomover, Lu Wallace, Jane Jensen, Ruth Ann Simons, LuVaonne Jensen, Helen Brown, Nedra Nelson, Dick Wain, Tom Geary, Floyd Davis, Gertrude Hips, Patricia N. Brown, Betty Brown, Hal Davis, Bert Christensen.

Pauline Jacobson, Connie Smith, and Ann Davis, Jolson Allen, Rosalind (Continued from Page 13)

Student Dance Features Beyer Combo

"One of the most outstanding combos of the intermountain area will furnish the dancing music for the student body dance, Friday," reports June Lacey, chairman of the dance.

Ralph Beyer and his combo will play the music for the dance in the main ball room of the Student Union building, Friday.

LuVaonne Jensen is planning the intermission program which Edith McLachrie will emcee.

Arranging for the patrons and patronesses is Lillian Johnson. Beyer and his combo are currently playing at Oller's Terrace Room in Salt Lake City.

One student body card per couple will admit students into the dance. This is a new policy which has been adopted by the student council in order for married couples to attend student body dances.

The dance will start at 9 p.m. and the dress is sport.

Applications Open For Barkle Council Position

Applications are now open for student councilman from the school of education, replacing Joyce Barkle, who has resigned from the council to get married.

According to Darwin Green, election board chairman, the applications will be due next Tuesday at 5 p.m. Blanks are available in the studentbody office in the Union building when completed should be returned there.

Only students from the school of education should apply.

HEY--THIS IS 'WINTER'

Snow, and lots of it--that all that's needed now for the annual Winter Carnival, which may or may not be held Feb. 9 to 14.

If Old Man Winter coughs through with the "white-stuff" activities of the annual affair will feature snow sculpturing on the quad, snowshoe races during the noon hours, skiing events, and a studentbody Snow Ball.

Entrants in the sculpturing competition will be assigned spaces on the quad, and may begin their "masterpieces" according to weather conditions. Judges will allow four and one-half days for completion, once begun.

Wednesday noon on the quad, a man's snowshoe race will be held, with women's snowshoe relay events slated Thursday noon.

Friday night, Feb. 14, the Snow Ball will be held in the main ballroom of the Student Union building, featuring George Engel's orchestra.

An intermission program is planned, at which time Dave Faison will announce the Snow Queen and King.

Candidates for the Winter queen are Alice Wells, sponsored by Psi Kappa Alpha; Ruth Ann Simons, Sigma Phi Epsilon; Marion Beveridge, Sigma Alpha Epsilon; and Jackie Jacobson, Sigma Chi.

Drive For Blood Set Next Week

BY JAMES MORTIMER

There's something you can give, and hardly know it's gone, and that's a pint of blood. James Hansen, chairman of the campus blood drive started this week in announcing the drive next Monday and Tuesday.

"We're out for your blood," Hansen and Bob Zundel, publicity director of the drive emphasized in announcing the tentative drive schedule.

Tower Installed For KVSC FM Broadcast

With their new tower installed, KVSC, campus radio station will soon be ready to go on the air with Cache Valley's first frequency modulation (FM) broadcasting.

According to Prof. Barrett Hansen, station advisor, tests are now being completed under the direction of Larry S. Cole and Clayton Clark of the electrical engineering department.

The new antenna has been installed atop the Mechanic Arts building, and will beam into all of Cache Valley. Prof. Cole indicated. The tower was constructed by Emmott Devine and donated by Buildings and Grounds.

KVSC will operate in 88.1 megacycles, on the FM band. Broadcast hours reportedly will be from 7 a.m. and 6 to 10 p.m., school days, and Tuesdays at 11 a.m. to carry student assemblies, direct from the auditorium.

Station programming is now being arranged by the student staff of the station.

The Voice of the State College will be Utah's second college FM station. Snow Branch college has been operating on an FM band for a short period of time.

Plans to buy a transcription library are now being formulated by the station.

Met Baritone Will Present Lyceum

Robert McNeill, Metropolitan Opera baritone star will present the next college lyceum, Feb. 4 at 8 p.m. in the college fieldhouse.

The appearance of Mr. McNeill is being jointly arranged by the college Lyceum Bureau and the Cache Valley Civic Music Assn. Mr. McNeill, whose first ambition was to croon like Bing Crosby, is an RCA Victor recording star, and stars in Paramount Pictures.

Plans to buy a transcription library are now being formulated by the station.

For King, competitors are George Preston, sponsored by Kappa Delta; John Nuebergall, Chi Omega; Wally Budge, Sigma Kappa; and Bill Preston, Alpha Chi Omega.

Any other candidates, sponsored or unsponsored, should contact the Student Assn. immediately.

Ray Walters of the P. E. Department is aiding in arrangements for the carnival, with Mr. Faison, student chairman. Working with them are Robert Paul, Betty Hesse and Pamela Landahl of Intramural.

Students Assn. dancer, Jerry Shultz, publicity, Jeanne Zollinger, Snow King and Queen, and resident, Rose Foster, and Wally Budge, special activities.

TEHDAY, FEB. 3

8:45 a.m. - M. M. to K. Nelson, 10 a.m. - M. M. to K. Nelson, 10:15 a.m. - M. M. to K. Nelson, 10:30 a.m. - M. M. to K. Nelson, 10:45 a.m. - M. M. to K. Nelson, 11:00 a.m. - M. M. to K. Nelson, 11:15 a.m. - M. M. to K. Nelson, 11:30 a.m. - M. M. to K. Nelson, 11:45 a.m. - M. M. to K. Nelson, 12:00 p.m. - M. M. to K. Nelson, 12:15 p.m. - M. M. to K. Nelson, 12:30 p.m. - M. M. to K. Nelson, 12:45 p.m. - M. M. to K. Nelson, 1:00 p.m. - M. M. to K. Nelson, 1:15 p.m. - M. M. to K. Nelson, 1:30 p.m. - M. M. to K. Nelson, 1:45 p.m. - M. M. to K. Nelson, 2:00 p.m. - M. M. to K. Nelson, 2:15 p.m. - M. M. to K. Nelson, 2:30 p.m. - M. M. to K. Nelson, 2:45 p.m. - M. M. to K. Nelson, 3:00 p.m. - M. M. to K. Nelson, 3:15 p.m. - M. M. to K. Nelson, 3:30 p.m. - M. M. to K. Nelson, 3:45 p.m. - M. M. to K. Nelson, 4:00 p.m. - M. M. to K. Nelson, 4:15 p.m. - M. M. to K. Nelson, 4:30 p.m. - M. M. to K. Nelson, 4:45 p.m. - M. M. to K. Nelson, 5:00 p.m. - M. M. to K. Nelson, 5:15 p.m. - M. M. to K. Nelson, 5:30 p.m. - M. M. to K. Nelson, 5:45 p.m. - M. M. to K. Nelson, 6:00 p.m. - M. M. to K. Nelson, 6:15 p.m. - M. M. to K. Nelson, 6:30 p.m. - M. M. to K. Nelson, 6:45 p.m. - M. M. to K. Nelson, 7:00 p.m. - M. M. to K. Nelson, 7:15 p.m. - M. M. to K. Nelson, 7:30 p.m. - M. M. to K. Nelson, 7:45 p.m. - M. M. to K. Nelson, 8:00 p.m. - M. M. to K. Nelson, 8:15 p.m. - M. M. to K. Nelson, 8:30 p.m. - M. M. to K. Nelson, 8:45 p.m. - M. M. to K. Nelson, 9:00 p.m. - M. M. to K. Nelson, 9:15 p.m. - M. M. to K. Nelson, 9:30 p.m. - M. M. to K. Nelson, 9:45 p.m. - M. M. to K. Nelson, 10:00 p.m. - M. M. to K. Nelson, 10:15 p.m. - M. M. to K. Nelson, 10:30 p.m. - M. M. to K. Nelson, 10:45 p.m. - M. M. to K. Nelson, 11:00 p.m. - M. M. to K. Nelson, 11:15 p.m. - M. M. to K. Nelson, 11:30 p.m. - M. M. to K. Nelson, 11:45 p.m. - M. M. to K. Nelson, 12:00 a.m. - M. M. to K. Nelson, 12:15 a.m. - M. M. to K. Nelson, 12:30 a.m. - M. M. to K. Nelson, 12:45 a.m. - M. M. to K. Nelson, 1:00 a.m. - M. M. to K. Nelson, 1:15 a.m. - M. M. to K. Nelson, 1:30 a.m. - M. M. to K. Nelson, 1:45 a.m. - M. M. to K. Nelson, 2:00 a.m. - M. M. to K. Nelson, 2:15 a.m. - M. M. to K. Nelson, 2:30 a.m. - M. M. to K. Nelson, 2:45 a.m. - M. M. to K. Nelson, 3:00 a.m. - M. M. to K. Nelson, 3:15 a.m. - M. M. to K. Nelson, 3:30 a.m. - M. M. to K. Nelson, 3:45 a.m. - M. M. to K. Nelson, 4:00 a.m. - M. M. to K. Nelson, 4:15 a.m. - M. M. to K. Nelson, 4:30 a.m. - M. M. to K. Nelson, 4:45 a.m. - M. M. to K. Nelson, 5:00 a.m. - M. M. to K. Nelson, 5:15 a.m. - M. M. to K. Nelson, 5:30 a.m. - M. M. to K. Nelson, 5:45 a.m. - M. M. to K. Nelson, 6:00 a.m. - M. M. to K. Nelson, 6:15 a.m. - M. M. to K. Nelson, 6:30 a.m. - M. M. to K. Nelson, 6:45 a.m. - M. M. to K. Nelson, 7:00 a.m. - M. M. to K. Nelson, 7:15 a.m. - M. M. to K. Nelson, 7:30 a.m. - M. M. to K. Nelson, 7:45 a.m. - M. M. to K. Nelson, 8:00 a.m. - M. M. to K. Nelson, 8:15 a.m. - M. M. to K. Nelson, 8:30 a.m. - M. M. to K. Nelson, 8:45 a.m. - M. M. to K. Nelson, 9:00 a.m. - M. M. to K. Nelson, 9:15 a.m. - M. M. to K. Nelson, 9:30 a.m. - M. M. to K. Nelson, 9:45 a.m. - M. M. to K. Nelson, 10:00 a.m. - M. M. to K. Nelson, 10:15 a.m. - M. M. to K. Nelson, 10:30 a.m. - M. M. to K. Nelson, 10:45 a.m. - M. M. to K. Nelson, 11:00 a.m. - M. M. to K. Nelson, 11:15 a.m. - M. M. to K. Nelson, 11:30 a.m. - M. M. to K. Nelson, 11:45 a.m. - M. M. to K. Nelson, 12:00 p.m. - M. M. to K. Nelson, 12:15 p.m. - M. M. to K. Nelson, 12:30 p.m. - M. M. to K. Nelson, 12:45 p.m. - M. M. to K. Nelson, 1:00 p.m. - M. M. to K. Nelson, 1:15 p.m. - M. M. to K. Nelson, 1:30 p.m. - M. M. to K. Nelson, 1:45 p.m. - M. M. to K. Nelson, 2:00 p.m. - M. M. to K. Nelson, 2:15 p.m. - M. M. to K. Nelson, 2:30 p.m. - M. M. to K. Nelson, 2:45 p.m. - M. M. to K. Nelson, 3:00 p.m. - M. M. to K. Nelson, 3:15 p.m. - M. M. to K. Nelson, 3:30 p.m. - M. M. to K. Nelson, 3:45 p.m. - M. M. to K. Nelson, 4:00 p.m. - M. M. to K. Nelson, 4:15 p.m. - M. M. to K. Nelson, 4:30 p.m. - M. M. to K. Nelson, 4:45 p.m. - M. M. to K. Nelson, 5:00 p.m. - M. M. to K. Nelson, 5:15 p.m. - M. M. to K. Nelson, 5:30 p.m. - M. M. to K. Nelson, 5:45 p.m. - M. M. to K. Nelson, 6:00 p.m. - M. M. to K. Nelson, 6:15 p.m. - M. M. to K. Nelson, 6:30 p.m. - M. M. to K. Nelson, 6:45 p.m. - M. M. to K. Nelson, 7:00 p.m. - M. M. to K. Nelson, 7:15 p.m. - M. M. to K. Nelson, 7:30 p.m. - M. M. to K. Nelson, 7:45 p.m. - M. M. to K. Nelson, 8:00 p.m. - M. M. to K. Nelson, 8:15 p.m. - M. M. to K. Nelson, 8:30 p.m. - M. M. to K. Nelson, 8:45 p.m. - M. M. to K. Nelson, 9:00 p.m. - M. M. to K. Nelson, 9:15 p.m. - M. M. to K. Nelson, 9:30 p.m. - M. M. to K. Nelson, 9:45 p.m. - M. M. to K. Nelson, 10:00 p.m. - M. M. to K. Nelson, 10:15 p.m. - M. M. to K. Nelson, 10:30 p.m. - M. M. to K. Nelson, 10:45 p.m. - M. M. to K. Nelson, 11:00 p.m. - M. M. to K. Nelson, 11:15 p.m. - M. M. to K. Nelson, 11:30 p.m. - M. M. to K. Nelson, 11:45 p.m. - M. M. to K. Nelson, 12:00 a.m. - M. M. to K. Nelson, 12:15 a.m. - M. M. to K. Nelson, 12:30 a.m. - M. M. to K. Nelson, 12:45 a.m. - M. M. to K. Nelson, 1:00 a.m. - M. M. to K. Nelson, 1:15 a.m. - M. M. to K. Nelson, 1:30 a.m. - M. M. to K. Nelson, 1:45 a.m. - M. M. to K. Nelson, 2:00 a.m. - M. M. to K. Nelson, 2:15 a.m. - M. M. to K. Nelson, 2:30 a.m. - M. M. to K. Nelson, 2:45 a.m. - M. M. to K. Nelson, 3:00 a.m. - M. M. to K. Nelson, 3:15 a.m. - M. M. to K. Nelson, 3:30 a.m. - M. M. to K. Nelson, 3:45 a.m. - M. M. to K. Nelson, 4:00 a.m. - M. M. to K. Nelson, 4:15 a.m. - M. M. to K. Nelson, 4:30 a.m. - M. M. to K. Nelson, 4:45 a.m. - M. M. to K. Nelson, 5:00 a.m. - M. M. to K. Nelson, 5:15 a.m. - M. M. to K. Nelson, 5:30 a.m. - M. M. to K. Nelson, 5:45 a.m. - M. M. to K. Nelson, 6:00 a.m. - M. M. to K. Nelson, 6:15 a.m. - M. M. to K. Nelson, 6:30 a.m. - M. M. to K. Nelson, 6:45 a.m. - M. M. to K. Nelson, 7:00 a.m. - M. M. to K. Nelson, 7:15 a.m. - M. M. to K. Nelson, 7:30 a.m. - M. M. to K. Nelson, 7:45 a.m. - M. M. to K. Nelson, 8:00 a.m. - M. M. to K. Nelson, 8:15 a.m. - M. M. to K. Nelson, 8:30 a.m. - M. M. to K. Nelson, 8:45 a.m. - M. M. to K. Nelson, 9:00 a.m. - M. M. to K. Nelson, 9:15 a.m. - M. M. to K. Nelson, 9:30 a.m. - M. M. to K. Nelson, 9:45 a.m. - M. M. to K. Nelson, 10:00 a.m. - M. M. to K. Nelson, 10:15 a.m. - M. M. to K. Nelson, 10:30 a.m. - M. M. to K. Nelson, 10:45 a.m. - M. M. to K. Nelson, 11:00 a.m. - M. M. to K. Nelson, 11:15 a.m. - M. M. to K. Nelson, 11:30 a.m. - M. M. to K. Nelson, 11:45 a.m. - M. M. to K. Nelson, 12:00 p.m. - M. M. to K. Nelson, 12:15 p.m. - M. M. to K. Nelson, 12:30 p.m. - M. M. to K. Nelson, 12:45 p.m. - M. M. to K. Nelson, 1:00 p.m. - M. M. to K. Nelson, 1:15 p.m. - M. M. to K. Nelson, 1:30 p.m. - M. M. to K. Nelson, 1:45 p.m. - M. M. to K. Nelson, 2:00 p.m. - M. M. to K. Nelson, 2:15 p.m. - M. M. to K. Nelson, 2:30 p.m. - M. M. to K. Nelson, 2:45 p.m. - M. M. to K. Nelson, 3:00 p.m. - M. M. to K. Nelson, 3:15 p.m. - M. M. to K. Nelson, 3:30 p.m. - M. M. to K. Nelson, 3:45 p.m. - M. M. to K. Nelson, 4:00 p.m. - M. M. to K. Nelson, 4:15 p.m. - M. M. to K. Nelson, 4:30 p.m. - M. M. to K. Nelson, 4:45 p.m. - M. M. to K. Nelson, 5:00 p.m. - M. M. to K. Nelson, 5:15 p.m. - M. M. to K. Nelson, 5:30 p.m. - M. M. to K. Nelson, 5:45 p.m. - M. M. to K. Nelson, 6:00 p.m. - M. M. to K. Nelson, 6:15 p.m. - M. M. to K. Nelson, 6:30 p.m. - M. M. to K. Nelson, 6:45 p.m. - M. M. to K. Nelson, 7:00 p.m. - M. M. to K. Nelson, 7:15 p.m. - M. M. to K. Nelson, 7:30 p.m. - M. M. to K. Nelson, 7:45 p.m. - M. M. to K. Nelson, 8:00 p.m. - M. M. to K. Nelson, 8:15 p.m. - M. M. to K. Nelson, 8:30 p.m. - M. M. to K. Nelson, 8:45 p.m. - M. M. to K. Nelson, 9:00 p.m. - M. M. to K. Nelson, 9:15 p.m. - M. M. to K. Nelson, 9:30 p.m. - M. M. to K. Nelson, 9:45 p.m. - M. M. to K. Nelson, 10:00 p.m. - M. M. to K. Nelson, 10:15 p.m. - M. M. to K. Nelson, 10:30 p.m. - M. M. to K. Nelson, 10:45 p.m. - M. M. to K. Nelson, 11:00 p.m. - M. M. to K. Nelson, 11:15 p.m. - M. M. to K. Nelson, 11:30 p.m. - M. M. to K. Nelson, 11:45 p.m. - M. M. to K. Nelson, 12:00 a.m. - M. M. to K. Nelson, 12:15 a.m. - M. M. to K. Nelson, 12:30 a.m. - M. M. to K. Nelson, 12:45 a.m. - M. M. to K. Nelson, 1:00 a.m. - M. M. to K. Nelson, 1:15 a.m. - M. M. to K. Nelson, 1:30 a.m. - M. M. to K. Nelson, 1:45 a.m. - M. M. to K. Nelson, 2:00 a.m. - M. M. to K. Nelson, 2:15 a.m. - M. M. to K. Nelson, 2:30 a.m. - M. M. to K. Nelson, 2:45 a.m. - M. M. to K. Nelson, 3:00 a.m. - M. M. to K. Nelson, 3:15 a.m. - M. M. to K. Nelson, 3:30 a.m. - M. M. to K. Nelson, 3:45 a.m. - M. M. to K. Nelson, 4:00 a.m. - M. M. to K. Nelson, 4:15 a.m. - M. M. to K. Nelson, 4:30 a.m. - M. M. to K. Nelson, 4:45 a.m. - M. M. to K. Nelson, 5:00 a.m. - M. M. to K. Nelson, 5:15 a.m. - M. M. to K. Nelson, 5:30 a.m. - M. M. to K. Nelson, 5:45 a.m. - M. M. to K. Nelson, 6:00 a.m. - M. M. to K. Nelson, 6:15 a.m. - M. M. to K. Nelson, 6:30 a.m. - M. M. to K. Nelson, 6:45 a.m. - M. M. to K. Nelson, 7:00 a.m. - M. M. to K. Nelson, 7:15 a.m. - M. M. to K. Nelson, 7:30 a.m. - M. M. to K. Nelson, 7:45 a.m. - M. M. to K. Nelson, 8:00 a.m. - M. M. to K. Nelson, 8:15 a.m. - M. M. to K. Nelson, 8:30 a.m. - M. M. to K. Nelson, 8:45 a.m. - M. M. to K. Nelson, 9:00 a.m. - M. M. to K. Nelson, 9:15 a.m. - M. M. to K. Nelson, 9:30 a.m. - M. M. to K. Nelson, 9:45 a.m. - M. M. to K. Nelson, 10:00 a.m. - M. M. to K. Nelson, 10:15 a.m. - M. M. to K. Nelson, 10:30 a.m. - M. M. to K. Nelson, 10:45 a.m. - M. M. to K. Nelson, 11:00 a.m. - M. M. to K. Nelson, 11:15 a.m. - M. M. to K. Nelson, 11:30 a.m. - M. M. to K. Nelson, 11:45 a.m. - M. M. to K. Nelson, 12:00 p.m. - M. M. to K. Nelson, 12:15 p.m. - M. M. to K. Nelson, 12:30 p.m. - M. M. to K. Nelson, 12:45 p.m. - M. M. to K. Nelson, 1:00 p.m. - M. M. to K. Nelson, 1:15 p.m. - M. M. to K. Nelson, 1:30 p.m. - M. M. to K. Nelson, 1:45 p.m. - M. M. to K. Nelson, 2:00 p.m. - M. M. to K. Nelson, 2:15 p.m. - M. M. to K. Nelson, 2:30 p.m. - M. M. to K. Nelson, 2:45 p.m. - M. M. to K. Nelson, 3:00 p.m. - M. M. to K. Nelson, 3:15 p.m. - M. M. to K. Nelson, 3:30 p.m. - M. M. to K. Nelson, 3:45 p.m. - M. M. to K. Nelson, 4:00 p.m. - M. M. to K. Nelson, 4:15 p.m. - M. M. to K. Nelson, 4:30 p.m. - M. M. to K. Nelson, 4:45 p.m. - M. M. to K. Nelson, 5:00 p.m. - M. M. to K. Nelson, 5:15 p.m. - M. M. to K. Nelson, 5:30 p.m. - M. M. to K. Nelson, 5:45 p.m. - M. M. to K. Nelson, 6:00 p.m. - M. M. to K. Nelson, 6:15 p.m. - M. M. to K. Nelson, 6:30 p.m. - M. M. to K. Nelson, 6:45 p.m. - M. M. to K. Nelson, 7:00 p.m. - M. M. to K. Nelson, 7:15 p.m. - M. M. to K. Nelson, 7:30 p.m. - M. M. to K. Nelson, 7:45 p.m. - M. M. to K. Nelson, 8:00 p.m. - M. M. to K. Nelson, 8:15 p.m. - M. M. to K. Nelson, 8:30 p.m. - M. M. to K. Nelson, 8:45 p.m. - M. M. to K. Nelson, 9:00 p.m. - M. M. to K. Nelson, 9:15 p.m. - M. M. to K. Nelson, 9:30 p.m. - M. M. to K. Nelson, 9:45 p.m. - M. M. to K. Nelson, 10:00 p.m. - M. M. to K. Nelson, 10:15 p.m. - M. M. to K. Nelson, 10:30 p.m. - M. M. to K. Nelson, 10:45 p.m. - M. M. to K. Nelson, 11:00 p.m. - M. M. to K. Nelson, 11:15 p.m. - M. M. to K. Nelson, 11:30 p.m. - M. M. to K. Nelson, 11:45 p.m. - M. M. to K. Nelson, 12:00 p.m. - M. M. to K. Nelson, 12:15 p.m. - M. M. to K. Nelson, 12:30 p.m. - M. M. to K. Nelson, 12:45 p.m. - M. M. to K. Nelson, 1:00 p.m. - M. M. to K. Nelson, 1:15 p.m. - M. M. to K. Nelson, 1:30 p.m. - M. M. to K. Nelson, 1:45 p.m. - M. M. to K. Nelson, 2:00 p.m. - M. M. to K. Nelson, 2:15 p.m. - M. M. to K. Nelson, 2:30 p.m. - M. M. to K. Nelson, 2:45 p.m. - M. M. to K. Nelson, 3:00 p.m. - M. M. to K. Nelson, 3:15 p.m. - M. M. to K. Nelson, 3:30 p.m. - M. M. to K. Nelson, 3:45 p.m. - M. M. to K. Nelson, 4:00 p.m. - M. M. to K. Nelson, 4:15 p.m. - M. M. to K. Nelson, 4:30 p.m. - M. M. to K. Nelson, 4:45 p.m. - M. M. to K. Nelson, 5:00 p.m. - M. M. to K. Nelson, 5:15 p.m. - M. M. to K. Nelson, 5:30 p.m. - M. M. to K. Nelson, 5:45 p.m. - M. M. to K. Nelson, 6:00 p.m. - M. M. to K. Nelson, 6:15 p.m. - M. M. to K. Nelson, 6:30 p.m. - M. M. to K. Nelson, 6:45 p.m. - M. M. to K. Nelson, 7:00 p.m. - M. M. to K. Nelson, 7:15 p.m. - M. M. to K. Nelson, 7:30 p.m. - M. M. to K. Nelson, 7:45 p.m. - M. M. to K. Nelson, 8:00 p.m. - M. M. to K. Nelson, 8:15 p.m. - M. M. to K. Nelson, 8:30 p.m. - M. M. to K. Nelson, 8:45 p.m. - M. M. to K. Nelson, 9:00 p.m. - M. M. to K. Nelson, 9:15 p.m. - M. M. to K. Nelson, 9:30 p.m. - M. M. to K. Nelson, 9:45 p.m. - M. M. to K. Nelson, 10:00 p.m. - M. M. to K. Nelson, 10:15 p.m. - M. M. to K. Nelson, 10:30 p.m. - M. M. to K. Nelson, 10:45 p.m. - M. M. to K. Nelson, 11:00 p.m. - M. M. to K. Nelson, 11:15 p.m. - M. M. to K. Nelson, 11:30 p.m. - M. M. to K. Nelson, 11:45 p.m. - M. M. to K. Nelson, 12:00 p.m. - M. M. to K. Nelson, 12:15 p.m. - M. M. to K. Nelson, 12:30 p.m. - M. M. to K. Nelson, 12:45 p.m. - M. M. to K. Nelson, 1:00 p.m. - M. M. to K. Nelson, 1:15 p.m. - M. M. to K. Nelson, 1:30 p.m. - M. M. to K. Nelson, 1:45 p.m. - M. M. to K. Nelson, 2:00 p.m. - M. M. to K. Nelson, 2:15 p.m. - M. M. to K. Nelson, 2:30 p.m. - M. M. to K. Nelson, 2:45 p.m. - M. M. to K. Nelson, 3:00 p.m. - M. M. to K. Nelson, 3:15 p.m. - M. M. to K. Nelson, 3:30 p.m. - M. M. to K. Nelson, 3:45 p.m. - M. M. to K. Nelson, 4:00 p.m. - M. M. to K. Nelson, 4:15 p.m. - M. M. to K. Nelson, 4:30 p.m. - M. M. to K. Nelson, 4:45 p.m. - M. M. to K. Nelson, 5:00 p.m. - M. M. to K. Nelson, 5:15 p.m. - M. M. to K. Nelson, 5:30 p.m. - M. M. to K. Nelson, 5:45 p.m. - M. M. to K. Nelson, 6:00 p.m. - M. M. to K. Nelson, 6:15 p.m. - M. M. to K. Nelson, 6:30 p.m. - M. M. to K. Nelson, 6:45 p.m. - M. M. to K. Nelson, 7:00 p.m. - M. M. to K. Nelson, 7:15 p.m. - M. M. to K. Nelson, 7:30 p.m. - M. M. to K. Nelson, 7:45 p.m. - M. M. to K. Nelson, 8:00 p.m. - M. M. to K. Nelson, 8:15 p.m. - M. M. to K. Nelson, 8:30 p.m. - M. M. to K. Nelson, 8:45 p.m. - M. M. to K. Nelson, 9:00 p.m. - M. M. to K. Nelson, 9:15 p.m. - M. M. to K. Nelson, 9:30 p.m. - M. M. to K. Nelson, 9:45 p.m. - M. M. to K. Nelson, 10:00 p.m. - M. M. to K. Nelson, 10:15 p.m. - M. M. to K. Nelson, 10:30 p.m. - M. M. to K. Nelson, 10:45 p.m. - M. M. to K. Nelson, 11:00 p.m. - M. M. to K. Nelson, 11:15 p.m. - M. M. to K. Nelson, 11:30 p.m. - M. M. to K. Nelson, 11:45 p.m. - M. M. to K. Nelson, 12:00 p.m. - M. M. to K. Nelson, 12:15 p.m. - M. M. to K. Nelson, 12:30 p.m. - M. M. to K. Nelson, 12:45 p.m. - M. M. to K. Nelson, 1:00 p.m. - M. M. to K. Nelson, 1:15 p.m. - M. M. to K. Nelson, 1:30 p.m. - M. M. to K. Nelson, 1:45 p.m. - M. M. to K. Nelson, 2:00 p.m. - M. M. to K. Nelson, 2:15 p.m. - M. M. to K. Nelson, 2:30 p.m. - M. M. to K. Nelson, 2:45 p.m. - M. M. to K. Nelson, 3:00 p.m. - M. M. to K. Nelson, 3:15 p.m. - M. M. to K. Nelson, 3:30 p.m. - M. M. to K. Nelson, 3:45 p.m. - M. M. to K. Nelson, 4:00 p.m. - M. M. to K. Nelson, 4:15 p.m. - M. M. to K. Nelson, 4:30 p.m. - M. M. to K. Nelson, 4:45 p.m. - M. M. to K. Nelson, 5:00 p.m. - M. M. to K. Nelson, 5:15 p.m. - M. M. to K. Nelson, 5:30 p.m. - M. M. to K. Nelson, 5:45 p.m. - M. M. to K. Nelson, 6:00 p.m. - M. M. to K. Nelson, 6:15 p.m. - M. M. to K. Nelson, 6:30 p.m. - M. M. to K. Nelson, 6:45 p.m. - M. M. to K. Nelson, 7:00 p.m. - M. M. to K. Nelson, 7:15 p.m. - M. M. to K. Nelson, 7:30 p.m. - M. M

LETTERS TO THE EDITORS

Where There's Smoke, There's Fire

Moderate View

Editor, Student Life:

I think both Mr. Courtwright and Mrs. Hayes express extreme views in their published letters on smoking. To forbid smoking in the Union Building is to disregard the smoking population on the campus, but to allow it uncontrolled is to offend non smokers.

Since the Union Building is for the use and convenience of all students, I wonder why a portion of the building isn't made into a smoking lounge.

With this improvement smokers are made happy and non smokers are not subjected to an objectionable atmosphere.

Roy D. Wilcoxson

Happy With Hayes

Editor, Student Life:

I have noticed that for the last two weeks there have been letters written to the editor regarding smoking in the new Union building. Last week the letter was written by Ken Hayes. I know Ken, and I have thoroughly discussed the subject with him and I believe that we both agree on most of the same things.

Consider, All

We both feel that although we are non-smokers, the smokers on the campus should not be forgotten. What Ken was getting at, in a round about way, was evident after the two dances were held here last week. Some of the floors in the men's rooms still bear the scar of smouldering cigarette butts. These are just signs of what may happen in the future if this thing gets out of hand.

Special Spot

Why doesn't the Union Board set aside a spot in the building where fellows can go to relax and have a cigarette? Fix it up so that the smokers can enjoy themselves there. What we don't want to do is to come to school some Monday morning and find that someone has inadvertently dropped a cigarette on a carpet in one of the lounges and burned a hole in it. As long as we are fixing the building up nice, let's keep it that way. I'm sure that most of the students feel the way that Ken and I do.

Yours for a better Student Union,

Glen Haddock

Smouldering Mad

Editor, Student Life:

It seems that there is quite a heated discussion among students of Utah State concerning whether or not smoking will be allowed in the new Union Building. Most of the points have been hashed about and whether or not it will be allowed remains to be seen.

I would like to make mention of a few facts that the smokers as well as the non-smokers should take note of.

First of all, I was appalled at the amount of rubbish, cigarette butts and wrappers that obstructed the entrance to the Friday morning Afer a further investigation I found the rest room floors cluttered with "butts" and in one case the tile on the floor was charred. It seems that at least the smokers could dispose of their "butts" in the waste cans that lie within arm's length of where most of them were thrown.

Also if we are to allow smoking, how long is it going to be until a few drinkers ask for the privilege of drinking in the union building, in the open. Idle words? I have in my office an empty Peter Dawson, Special Blend Scotch Whiskey bottle, one of the many thrown in waste cans or on the roof during the dance.

If any of you tried to visit the Sky Room men's rest room in the early part of the week you would have found it locked. Reason—to keep the smell of whiskey from going into the other parts of the building.

If the minority want to smoke, fine; but let them educate themselves as to the rights of all and to the respect of our new million dollar building.

IVon Wall

Smokers Burn

Editor, Student Life:

Since Mr. Hayes has been so badly burned up, perhaps he would like to hear the views of another person who is as equally burned up.

For All Students

During the planning, constructing, and waiting for the Union Building, there was a general feeling among students that, since everybody was helping to pay for it, the building would be for the use of all students, regardless of majority or minority. The building is complete now, and according to Mr. Hayes and others, the building is not for general use.

Since the predominant religion represented on this campus maintains a building for the use of members, many students felt that the Union Building would not be an extension of this building. Fortunately for the majority, and unfortunately for the minority, this is the case. Many of us came to this college with the idea that separation of church and state had been many years ago. We also felt that, under the American system, minorities were no longer being discriminated against, especially in colleges.

About Transfers

We also came to this school because it offered a good course of study in the field we were interested. We would not, as Mr. Hayes suggested, like to transfer to another school for this reason. If people like Mr. Hayes keep at it long enough, we will be forced to transfer, regardless of how much we like the school academically.

All I can say about Scribble's Cheers! to Vern Bailey and his staff for finally putting out a magazine on a college level. If we are going to look around for smut, just read the last issue of Student Life; ie. Birds I View.

One more gripe. Since President Hubbard is generally regarded as being on a high plane than most other students, isn't it too bad that he has to indulge in ridiculous banter?

Sherman Ingram

Student Life

Established 1902

UTAH STATE COLLEGE
Logan, UtahEditor-in-Chief . . . JAMES MORTIMER
Business Manager . . . IVON WALL

EDITORIAL STAFF

Managing Editor . . . Eleanor Knowles
Associate Editor . . . George L. Mitton
Sports Editor . . . Larry Monroe
Society Editor . . . Rose Marie Wright
Feature Editor . . . Pat Williams
News Editor . . . Eileen Gibbons
Photographer . . . Kay Crook
Asst. Sports Editor . . . Gary Blodgett
Asst. Society Editor . . . Ann Patrick

BUSINESS STAFF

Asst. Bus. Mgr. Dean Vaterlaus
Advertising Mgr. Arthur Cahoon
Circulation Mgr. Glen Haddock
Exchange Manager Valene Kelly

STAFF WRITERS

Hugh Barnes, Judy Barker, Marilyn Bentley, Carol Bird, Bill Bowles, Tom Brown, Reed Clayton, Dexter Davis, Robert Evans, Andy Hays, Jeannine Madsen, Kay Matthews, Marie Merrill, Roselyn Nebeker, Donna Gueyile, Bette Reese, Jenice Reading, Mary Rhodes, Diana Walker, Veeonne White, Steve Huffaker, Bill Green, Norm Kimble.

BUSINESS READERS

Margaret Greaves, Sharon Mumford, Ruth Green.

Member

Associated College Press
Printed weekly during the school year by the Associated Students of the Utah State College, Office Room 213, Student Union Building, Phone 100 Extension 158 — Entered as second class mail matter Sept. 1908, at Logan, Utah, under Post Act of March 2, 1879. Acceptance for mailing at special rate of postage in accordance with Sec. 1103, Act of Oct. 3, 1917.

ROCKY MOUNTAIN
MEMBER
Intercollegiate
PRESS ASSOCIATION

Hayes Defended

Editor, Student Life:

In reference to the controversy between Courtwright and Hayes, Mr. Courtwright believes that the question should be submitted to the student body for a vote. It seems to be his opinion that most of the students on this campus are smokers, which, in my estimations, is erroneous and could be proven otherwise, if need be, by a survey.

The minority, the smokers, should not force the undesirable "effects" of their habit upon the rest of the student body.

It is my opinion that Mr. Hayes was fully justified in his rebuke of Mr. Courtwright's article.

Dale Goodwin

Courtwright Reply

Editor, Student Life:

Several things are quite patently evident from Mr. Hayes' letter, published in the Jan. 22 issue of Student Life.

The first and most evident is that Mr. Hayes is a member of that religion which he mentions.

Second is the fact that he evidently did not take the trouble to read my letter properly, viz.: . . . his suggestion that micrograph reprints . . . be sent to the frat houses is for the birds". Either Mr. Hayes prefers his own interpretation of my words or else he is one of those disappointed non-fraternity members, for I clearly stated "campus organizations", by which I mean the Foresters, Ag Club, etc.

Third, Mr. Hayes stated that "Our chosen representatives have already decided . . ." Chalk up another error in Mr. Hayes' reading. According to Student Life, it was not our "chosen representatives", but a member of the faculty, who decided that Scribble should be recalled. Even if it was our representatives, I would still suggest that the article be put up to a vote.

Afraid of Vote

In answer to Mr. Hayes request that I open my eyes and try to realize one or two things: I was fully aware, at the time of my original letter, that the religion which he mentions enjoins its members from smoking. Does it also prohibit the presence of its members in places where smoking is permitted? I suggested that the issue be put to a vote. Is Mr. Hayes afraid of that vote because of the possibility that the students of this area, (who won't be using the Union Building) are NOT predominantly of one religion?

Mr. Hayes seems to advocate the blind acceptance of all policies made by those in a position to formulate them. Does he also advocate the dogmatic acceptance of high taxes merely because they were formulated by the persons whom he elected?

Mr. Hayes suggested that if I don't like the established policies of this school, I should transfer to another institution. May I remind him that if all persons who objected to the established policies were to transfer, there wouldn't be any left.

In anticipation of further blind castigation by Mr. Hayes, I would like to state that I will not reply; not, as he will probably assert, because I am afraid of being proved wrong, but because I have long since realized the futility of trying to argue against bigotry and dogmatism. Also, I am very much offended that a further argument would degenerate into an argument on religion, and as I believe that each person is entitled to his own views, on religion as on other things I do not wish to debate the high standing of religion by public argument. My religious views are open to anyone who inquires, but I can not and will not force them on anyone else.

Scribble Squabble

Mr. Hayes states that he had the misfortune to read the questioned article in Scribble, and he thoroughly agrees that it is too base

'LIFE EDITORIAL

Dr. Hill Dies Sudden
Eulogized At Service

A respected educator and scientist, devoted husband, father, faithful servant of God, and unselfish friend away last Thursday. Dr. Reuben L. Hill, head of the chemistry department since 1919, died Thursday morning following short illness.

Services were conducted Saturday afternoon in the LDS 5th-18th ward chapel.

Student Leader

The life of Dr. Hill was an outstanding example thousands of students who studied under his direction in the 33 years he served as head of the chemistry department.

He graduated from the college with the class of 1919. Dr. John A. Widtsoe, another great chemist, was his mentor. He is listed in Who's Who in America and in America of Science, and is author of numerous research paper bulletins on milk secretion and soft curd milk. The R. curd test has been used all over the world, and the system of baby feeding has been changed as a result of his research.

Honored By All

His was a life of love and friendship—for his wife, friends, colleagues, and students.

As President Louis L. Madsen said, speaking at the services, "The many students who have taken work with Dr. Hill are strong in his praise. His students are in every part of the union and in most of the major countries of the world. I am proud to be one of his students. Many students testify that he taught them other things than just chemistry. He mingled his lectures with a philosophy of life that has been enduring to me."

Utah State mourns the loss of this great man, but rejoices in the contributions he made in science, education and in love and respect for his fellowmen.

for student consumption. I sincerely hope that he never has occasion to read an article originating in the Harvard Lampoon or some similar publication. Much as I disagree with his views, I would not wish him to suffer from apoplexy.

Alan M. Courtwright

More Smoke Fumes

Editor, Student Life:

In response to Ken Hayes' letter in Student Life last week, permit me to project the following 1993 Student Life editorial:

Forty years ago the wise men of Utah decided that the majority rule should prevail in our most wonderful state. And so, they ruled to put up a "No Smoking" sign at every entrance into the state. We are glad now that we spent our money wisely for these signs instead of squandering it on the construction of other entrances.

Next came the "No Drinking" signs. Soon after this they put up

the "We will not tolerate activities of any kind which are against the law or the honor of the state." And then the history of Hayes (if you don't like it) Proclamation.

Finally, of course, came the "stay out Policy."

And now, thanks to the sighted majority policy makers are living in the most wonderful place in the entire world. With this because we are not with the heinous influence of radical minority people.

This morning as I rode horse—we do not use cars anymore because of the boycott minority produced goods—way to indoctrination we realized how fortunate we have been born in this state for the majority, uninfluenced those awful minorities.

And yet, there are when I indulge in foolishness and wonder just what is the great wall of Utah.

Name on Request

AGGIES CHECK WHAT'S

Up And Coming

Following is a list of activities for the coming week as released by the Student Personnel Office:

Thursday, January 29—L. D. S. Chapter meetings, Institute 7:30 p.m.; Foxen's Wives Card Party, 7:30 p.m.; Bacteriology Club, TV Room, Union Bldg., 7:30 p.m.; 4-H Club, Rm. Arts, 7:30 p.m.

Friday, January 30—Basketball, U of U, Salt Lake; STUDENT BODY DANCE, Union Bldg., 9 p.m.

Saturday, January 31—Basketball, B Y U, Provo; Beta Pi Winter Formal; Kappa Sigma Winter Formal; Sigma pledge party, 8 p.m.

Monday, February 2—Bloodmobile, Union Bldg.; Basketball, Montana U., Fieldhouse, 8 p.m.; Socials Committee meeting, Union Bldg., 12 p.m.; Assembly committee, Union Bldg., 12 p.m.; Home Ec Club, Women's Lounge, 5 p.m.; Dance Club, Women's Lounge, 7:30 p.m.; Independent Student TV Room, Union Bldg., 7:30 p.m.; Table Tennis (all campus intramural).

Tuesday, February 3—I. S. A. Assembly, Auditorium, 11 a.m.; Bloodmobile, Union Bldg.; Spurs, Women's Lounge, 5 p.m.; Rodeo Club, AH 103, 5 p.m.

Wednesday, February 4—Dance Concert, Auditorium, 8 p.m.; Canadian Club, Women's Lounge, 5 p.m.; Tool Engineers MA 101, 5 p.m.; Beta Pi, Institute, 7 p.m.; Delta Phi, Institute, 7 p.m.; Soc. of Auto Engineers, Tech 8, 8 p.m.; Faculty Dancing Group, Sky Room of Union Bldg., 9:30 p.m.

Radio Station Records Vocational Programs

A series of 15-minute radio programs on the vocational training programs are being transcribed in the college studios for distribution to radio stations throughout Utah. The programs, which are being directed by Prof. Burrell F. Hansen of the radio speech department, are sponsored by the Utah State Department of Public Instruction. Ken Hayes is student assistant director.

Pros' Practice for Carnival in Snowy Slopes

BY BETTE REESE

A popular winter sport in college circles now is skiing at Beaver Mountain ski area. Each weekend local pros retreat from the pressure of studies to the slopes, where they enjoy the thrills and touchy tibias of the sport.

With the Winter Carnival coming up, it would be a good plan all the clubs to get out "en masse" and practice the snow show events. Snow conditions at the slopes are improving all the time. Winter Carnival officials are: Paul, student manager for men; Bette Reese, manager for women; general chairman, Ray Peters; chairman for men, David West; and chairman for women, Anna Lundahl.

Enter Now

All entries for the competition must be in by Feb. 3. The participating organization must enter two of the four events in order to earn entry points. In the down-hill and slalom, as many as desired can enter, but in the snow show there is a limit of four for each competitor.

Buzzer Progresses

Work on the Buzzer is progressing nicely," according to Darrell M. editor.

Four class sections have just completed and sent to the editors.

Buzzer Ball

Plans are now under way for Buzzer Ball which will be held February 20 in the Union Building. Buzzer personalities, which will be chosen by popular vote, will be introduced at the dance. Dress will be semi-formal. Committee in charge of the dance are: Rilla Dee Payne, chairman; Pat Williams, co-chairman; Jean Fuhrman and Jackie Perry, decorations; Van Dunn and Ann Olsen, programs; Jerry Merratt, publicity; Patti Buehler and Varo Christensen, intermission.

Hayes Too Biased

Editor, Student Life: I hate to see a person come out with such a biased statement as the one Mr. Ken Hayes made in the recent edition of Student Life. Undoubtedly Mr. Hayes is being influenced by his religion. He evidently does not realize that this school is substantially supported and represented by students of other beliefs.

Student Voice

Perhaps Mr. Hayes has lost sight of the fact that our Union Building has been financed by Aggie students. This alone is grounds enough to allow us to have a voice in some of the policies of the Union Building. Namely the one of allowing smoking in the Union Building.

I favor the idea of allowing smoking in the Union Building, though I am a non-smoker myself.

For Recreation

The Union Building is a place for recreation and relaxation and to the smokers I know, smoking is a form of relaxation.

Perhaps this issue can be settled by a student body vote. Then we can hear what the majority has to say.

Verne Hunt

AGGIES OF THE WEEK

Chosen for this week's "Aggie of the Week" is hard-working Dick Merrill, chairman of Utah State's Social's Committee.

During the past few months, you've all heard Dick's name in close connection with our new Student Union Building. And well he deserves his praise. As manager of the Temporary Union Building and a member of the board of directors of our present building, he has been one of the project's most active workers.

In high school he participated in football and track and was a member of the Letterman's Club and the Music Club.

Upon enrolling at Utah State, Dick became a member of Sigma Alpha Epsilon Fraternity. He is treasurer of the Blue Key honorary fraternity and a member of the Student Council.

Dick also completed an LDS mission in the Western States. He is majoring in business and plans to become an executive.

This is not, by any means, the extent of Dick's activities. As a member of the Queen Contest Committee for Agathon last year, he pursued his favorite hobby, Women.

Now, after successfully helping to put our Union Building into operation, Dick is concentrating his energies on planning many social functions to be held there.

Student Union To Sponsor Dateless Dances; TV Parties

BY LLOYD CLEMENT

The Union building director and the custodian are quite elated over the fact that the students are using the new building and its facilities with such care. Not a single scratch or blemish has been reported. This of course, is as it should be. Let's remember, too, that the building is to use, not to look at.

Put It To Work

In as much as it is the pride of the campus, let's put it to work. Everyone is invited and encouraged to drop in and get acquainted with the building.

Television is on from 11 a.m. to 5 p.m. each day.

Popcorn and Cracker Jack

The first informal get-together will be held in the Union Friday afternoon February 6. Carol Bird and Ronald Austin are planning the affair. A dance, a continuous show, television and refreshments are planned. If none of these appeal to you, bring a good book and make use of the main lounge.

Apply at Union

All students wishing to participate on Union program committees are requested to fill out the

standard application blank provided in the Student Council office and place it in Dick Merrill's box. See you at the Union.

Buchanan Named

Ronald Buchanan Tuesday evening was appointed by Student Council as a member of the student traffic court.

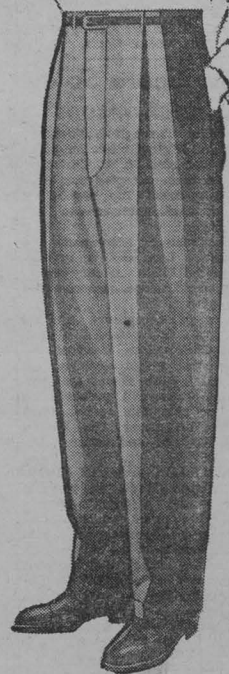
Appointments to the traffic committee are still open for application according to Monte Merrill, chairman. Students should apply in the studentbody office, room 210 in the Union building.

A clarification of traffic procedures was made by Merrill for those receiving tickets. After receiving a ticket, the fine is paid at the secretary's office, at which time an appeal is filed. The student appeals his case at the court sessions.



HAGGAR IMPERIAL SLACKS

in luxurious all-wool flannels



Flannels are first for Fall! For the best-looking, most luxurious flannel slacks you ever wore, try on a pair of Haggar Imperial Flannels...loomed from imported wools

Slacks 7.85 to 18.85

LEVEN'S
THE STORE OF GREATER VALUES

Valentine Gifts



GIVE A PHOTO OF YOU

It's the Gift

Of Lasting Pleasure

The gift your mother, sweetheart or friends really long for...a portrait of you. Bridge the hours of separation with a picture.

SPECIAL OFFER

THURSDAY, FRIDAY AND SATURDAY ONLY

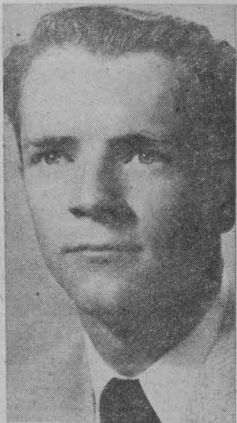
1 8" x 10" Portrait\$4.50
Beautifully Hand Colored in Oil\$2.00
Total Regular Value\$6.50

This Special \$4.00
All for

BRUNSON STUDIO & CAMERA SUPPLY CO.

121 South Main Street, Logan, Utah

Phone 743



Allen Chairmans Invitations For 'High School Day'

Ross Allen has been chosen high school relations chairman for Agathon, Allen Stephens, general chairman, announced today.

His job will be to contact all Utah high school and some in Idaho and Wyoming and invite them to attend "High School Day."

"High School Day" is May 1.

Students that come to "High School Day" will be shown the recreational and educational facilities of the college. Departmental displays, a variety show, ROTC review and fashion show are among activities planned.

Agathon is Utah State college's educational fair.

Ross has had training in leadership. While in high school he was studentbody treasurer when a junior, and studentbody president when a senior.

A sophomore majoring in business administration, he is also rush chairman of Pi Kappa Alpha.

Other members on the public relations committee are: Nancy Hansen, Ann Nelson, Ernie Hartmann, Sherman Lindhardt, Kelley Farmer and Louise Garff.

Piano Score Sold By Christiansens

A "Trip Through Yellowstone Park," an original work for piano by Dr. and Mrs. N. W. Christiansen, has been accepted for publication by Belwin Inc., one of the foremost music publishers in New York city.

Illustrations to accompany the music have been drawn by another noted USAC faculty member, Everett Thorpe, assistant professor of art.

Notice of acceptance by the publishers was received this week by Dr. Christiansen, head of the instrumental music division and of the Utah State String Quartet, and the work will probably be ready for sale this spring. Contract rights cover the United States, Canada and other countries.

Max Winkler, president of Belwin Inc., states that, "the work is excellent and a terrific idea." Many other noted music educators have also praised the work.

The work contains music, pictures and a story which is kept on the level of a child's experiences and reflects through these mediums an authentic series of events taking place in the great national park.

Barber Joins Student Union

Another addition has been made to facilities of the Student Union Building.

Kimball Sandberg, former "Bluebird" barber, has moved his quarters into the Union building. He is located in the west end of the basement floor of the Union.

New equipment for the shop will be installed soon, but the barber shop will be in full operation until the equipment arrives.

ARE YOU TOUGH ENOUGH FOR THIS JOB?

If you can make the grade, the U. S. Air Force will award you a commission, your wings and pay you over \$5,000 a year!

CAN YOU "take it" 6 days a week? For 52 weeks? Can you meet the high standards required to be an Aviation Cadet? If you can—then here's a man-size opportunity! An opportunity to serve your country and build a personal career that will fit you for responsible positions both in military and commercial aviation.

It won't be easy! Training discipline for Aviation Cadets is rigid. You'll work hard, study hard, play hard—especially for the first few weeks. But when it's over, you'll be a pro—with a career ahead of you that will take you as far as you want to go. You graduate as a 2nd Lieutenant in the Air Force, with pay of \$5,300.00 a year. And this is only the beginning—

your opportunities for advancement are unlimited.

ARE YOU ELIGIBLE?

To qualify as an Aviation Cadet, you must have completed at least two years of college. This is a *minimum* requirement—it's best if you stay in school and graduate. In addition, you must be between 19 and 26½ years, unmarried, and in good physical condition.

YOU CAN CHOOSE BETWEEN PILOT OR AIRCRAFT OBSERVER

If you choose to be an Aircraft Observer, your training will be in Navigation, Bombardment, Radar Operation or Aircraft Performance Engineering.

New Aviation Cadet Training Classes Begin Every Few Weeks!

HERE'S WHAT TO DO:

1. Take a transcript of your college credits and a copy of your birth certificate to your nearest Air Force Base or Recruiting Station. Fill out the application they give you.
2. If application is accepted, the Air Force will arrange for you to take a physical examination.
3. Next, you will be given a written and manual aptitude test.
4. If you pass your physical and other tests, you will be scheduled for an Aviation Cadet Training Class. The Selective Service Act allows you a four-month deferment while waiting class assignment.

Where to get more details: Visit your nearest Air Force Base or Air Force Recruiting Office OR WRITE TO: AVIATION CADET HEADQUARTERS, U. S. AIR FORCE, WASHINGTON 25, D. C.



School Conducts Clarinet Clinic, Concert Tonight

A clarinet concert and clinic will be held at the college tonight.

Students are invited to the informal concert, while the clinic will be for music teachers and clarinet students in high schools of northern Utah and southern Idaho, according to Prof. John Philip Dalby.

Sponsored by USAC's instrumental music department, the concert-clinic will be presented by Wesley Pearce, musical consultant, Salt Lake City, and is under direction of Max F. Dalby, woodwind specialist and instructor of instrumental music at Ogden high school.

Set For Union Building

Program for Thursday evening was listed by Professor Dalby as follows: Informal concert, 7 p.m. to 7:45 p.m.; lecture on the clarinet and clarinet playing, by Max F. Dalby, 7:45 to 8:15 p.m.; individual consultation, 8:15-9:30 p.m.

Both concert and clinic will be given in the new Union Building, with no admission charge.

Presenting the concert will be a clarinet quartet comprised of Max F. Dalby, Mr. Pearce, Lowell Hepworth, clarinet soloist at Cyprus high school, and Derral Siggard of Brigham city, clarinet soloist in the USAC symphonic band. The following numbers will be played:

Program Numbers Listed

Allegro by Beethoven, performed by three b-flat clarinets; Liebesfreud, by Kreisler, e-flat clarinet solo; Conzonetta by Mendelssohn and Prelude and Scherzo by Nutter, four b-flat clarinets; concerto by Von Weber, b-flat clarinet solo; articulation study, by J. P. Dalby, and Gigue, by Corelli, played by a mixed clarinet quartet.

Accompanist for the solo numbers will be Larry Bird, instructor of instrumental music at Brockbank junior high in Magna.

HEART WINNERS

GIBSON Valentine's

FOR EVERYONE YOU LOVE

AS SEEN IN LIFE

Sending Valentines is the perfect way to remember friends and sweethearts on this special day

Wilkinson's

BONTON WARE DISHES

GUARANTEED AGAINST BREAKAGE
SEE THE LARGE SELECTION AT

EVERTON

AND SONS CO.

YOUR PRACTICAL GIFT HEADQUARTERS



New members of the ROTC Sponsors corps were announced this week. Front row, left to right: Joleen Ashman, Laura Sullivan, Bette Reese, Pat Hickman, Diana Walker, Ruth Andrews, Pat Smith. Back row: Bonnie Neilsen, Jenice Reading, Sandra Richards, Marian Millburn, Georgene Kendrick, Diane Hullinger, Anna Mae Hill, Gale Smith and Beverly Bindrup.

News In Brief

Missionary Bill Introduced; No. Cache Program Slated

A bill to permit veterans to suspend or delay their educational training rights under the Korean G. I. Bill of Rights in order to serve as missionaries was introduced in the Senate Monday by Sen. Wallace F. Bennett (R., Utah).

The Bennett bill, co-sponsored by Sen. Arthur V. Watkins, (R., Utah), would extend by no more than 36 months the right of a veteran to use his training privileges under the original bill.

Under the Veterans Readjustment Assistant Act of 1952, Korean vets must initiate their training benefits within two years of their discharge or within two years from August 20, 1954, whichever is later. Furthermore, they must complete their education or training within seven years from their discharge date and cannot interrupt it for more than one year except under circumstances beyond their control.

"Veterans who desire to serve as missionaries for the Church of Jesus Christ of Latter-day Saints, and perhaps a few other churches, and who have served their time in military service must, under present regulations, virtually waive the training rights they have earned," Sen. Bennett noted.

Claims Are Paid

Student accident insurance payments have been made to the following students, according to Har-old Dance, insurance agent: Dean Larsen, \$11; R. A. Smith, \$8; Jean Hoelscher, \$11.50; Ronald Gunther, \$15; Bert Landon, paid \$40 and \$13 on separate claims; Garth Bischoff, \$5, and Gerald K. Wallace, \$13.

Chosen on Board

Miss Eleanor Taylor has been chosen to be a member of MADE-MOISELLE'S National Board. She is one of 700 students who competed with applicants from colleges all over the country to win a plane on the board.

As a College Board member, she will represent Utah State and report to the magazine on college life and the college scene. She will complete assignments competition for one of twenty guest editorships to be awarded by the magazine at the end of May.

ENGAGED

Rose Marie Wright, Kappa Delta, to Murray Nichols.

Debaters Slated To Enter Meet

The debate squad, under direction of Dr. Rex Robinson, debate coach, is preparing for three important speech meets this quarter. The first, the Utah State Midwinter Speech meet, will be held Feb. 6 and 7, with schools in the Rocky Mountain area participating.

Rocky Mountain speech conference will be held at the University of Denver the latter part of February.

McMinnville, Ore., will be center of activities early in March for the forensic-minded students of Utah State, when Linfield college will sponsor the "Tournament of Champions."

The debate squad has been strengthened considerably by the return to forensics this quarter of three veteran speakers, Nora B. Trugood, Roland Baldwin and LaMar Hansen. New members who made their debut into college debating winter quarter are Marie Merrill, David Sanders, Reed Durham, David Ruggera, Tom Brown and Vard Swain.

Marian Millburn, Kappa Delta, to Melvin Condy, Lambda Delta Sigma.

Patricia Butters to Lloyd Godfrey.

Charlene Arnold to Max Casper-

Friday Meet Set

An important meeting for persons connected with high school relations will be held Friday in the Union building, according to Rose Marie Wright, AWS sophomore representative and chairman of the committee.

Dr. L. G. Noble, director of the extension division, will work with the high school relations committee again this year, assisted by Jerald N. Christensen, public relations councilman, and Miss Wright.

Exchange Program

North Cache high school will present an exchange program Tuesday at the weekly assembly at 11 a.m. in the Main auditorium.

Sponsoring the program is Independent Students association. The assembly, which has been presented in high schools of the region in addition to civic clubs and organizations and the telephone operators convention, has the theme of the king and queen of hearts.

Writer of the script for the variety show is Rita Carlson, a North Cache student. Faculty adviser and director is Stratford Loosle. Twenty-one students participate in the cast.

INTERMOUNTAIN

CAPITOL Now Playing!

BING CROSBY ★ BOB HOPE in
"ROAD TO BALI"
Color by Technicolor
SUN. - MON. - TUES.
"THE THIEF"
RAY MILLAND ★ RITA GAM
Not a Word Spoken

Movies Are Better Than Ever!

ROXY Now Playing!

"BLAZING FOREST"
WITH JOHN PAYNE ★ SUSAN MORROW
Color by Technicolor
2ND HIT
"BREAKDOWN"
SUN. - MON. - TUES.
"CANYON PASSAGE"
With Dana Andrews ★ Susan Hayward
2ND HIT — "FRONTIER GAL"

AS

MEET

at



'BIRD

USUAL

ME

the

Ags Meet Utes, Cats, Grizzlies Over Weekend

Student Life SPORTS

Aggies Split Two Games With San Jose Spartans

After a 65-59 win over San Jose on Friday, Utah State's unpredictable cagers turned "Eskimo" and took a sound 73-59 thumping from the same Spartans the following night in a pair of non-league inter-sectional games in the Aggie field house.

Coach Walt McPherson's Spartans had everything their way on Saturday and humbled the Aggies to such a point that the contest was never in doubt as Coach Baker's crew couldn't hit the hoop with any effectiveness. The Spartans, in contrast, came through with a 45 per cent average for shots from the field.

Johnson at Best

On Friday, a commendable rebound job by sophomore Bart Johnson helped the Utags keep pace with the Spartans throughout the game and added a punch that gave the Aggies a six-point spurge in the final minute after the score was tied at 59-59. The 6'3" Johnson tallied 20 points, his highest total of the season.

The game's leading point-getter, however, was slender Lee Jensen, a Spartan senior who scored 28 points off of the San Jose smooth-operating offensive patterns. Jensen collected 11 points in the Spartan victory the next evening to be the high point man of the series with 39 tallies.

Farmer's Didn't Hit

Inability to hit from the field caused the Farmers to look sloppy on Saturday, as well as some ineffective passing and defensive work. The Ags could hit but 29 per cent of their shots. Bob Harbertson was typical of the ice-cold Aggie as he hit but one for 20 on Saturday and none for eight the night before.

Bill Hull and Johnson led the Aggies, hitting 20 and 17 points, as Hull grabbed 19 rebounds, his best performance of the season.

Farmers Have 3 Tough Conference Tilts in 4 Days

BY ABE CHUMLEY

The Ags take on three games in four days this weekend and Monday against three real toughies. Friday the Ags meet Utah's Redskins on Redskin hunting grounds. Then Saturday evening they take on BYU down in Cougarville. Sunday is the day of rest and then the Aggies come home to take on Montana's Grizzlies as the Bears wind up their tour of duty on this side of the mountains.

Although the Ags dumped Utah in a game in Logan on January 15, it wouldn't be safe to go on that basis in saying that the Ags will do a repeat performance.

Aggies Meet Utes

The Aggies will open Friday night against the Utah Utes in the Capitol city moving south Saturday to tangle with the Brigham Young Cougars.

Coach Cec Baker is expected to use essentially the same line-up with the exception of sophomore Bart Johnson who is expected to draw a starting forward berth. Johnson, hotter than a two dollar pistol, in the San Jose series, racked up 17 and 20 points respectively.

Flashy Bob Harbertson, who hit but one field goal in 28 attempts last week said, "It was just a slump—one I go into every year, however, it is usually later in the season." Harbertson will start against the Utes in the Friday fracas.

Other starters for the Utag aggregation will be capt. Darrell Tucker, Bill Hull and either Jack Clark or Frank Condie.

Utah State upset the Utes on the Aggie hardwood a couple of weeks ago to the tune of 62-58. The Aggies now sport a one win and three loss record. Utah is winless in four starts.

Saturday — the Cougars In a "Do or Die"

Things will develop in more ways than one Saturday night when the Aggies meet the Brigham Young Cougars on the Cougar's court.

For a win for the Cougars (if they are victorious over Montana U. Friday night) will move into a first place tie with Wyoming. The Cowboys are idle from conference play this week end.

On the other hand the Utah Aggies will have to gain at least a split in the two game fracas in order to stay in the thick of the Skyline Eight race.

Both teams will be at top strength for the Saturday night encounter. Scoring ace Joe Richey will be a welcomed sight to the Cougars after a week's absence. Incidentally, the Cougars were defeated by the Montana Grizzlies on the road trip in which Richey failed to see service.

On the Aggies side of the fence Coach Cec Baker had this to say about the Ag quintet, "The boys realize this is a 'do or die' affair and it looks as though the boys have taken it to heart. They are all in fine shape and ready to give the Utes and Cougars everything they have."

A Day's Rest,

And Then Montana

On Monday evening when the Farmers battle the Montana Grizzlies, they will meet a team that is tired from two previous tilts like unto the Aggies. Depending on the outcome of the other games played by the two teams over the weekend the winner of this game could cut the other almost out of a possibility of finishing in the upper division.

The Grizzly Bears thus far have come up with a fair showing. They dumped the Cougars in a surprise gesture on the home floor. They

berg. The big effort in Grizzly activities during the last week has been on defense.

Co-captain Jack Luckman and 6'6" center Dale Johnson carry most of the Montana defensive load.

Montana will probably start against the Aggies Monday night with Johnson at center, Luckman and Trinastick at forwards and Anderson and Ritch Johnson at guards. The regular starting forward Jim McNaney, is out for at least two weeks with an injured knee. However, this will not hurt the Grizzly chances too much, since their list of reserves has lots of strength.

The sign room in room 219 of the Union building is open from 12 noon to 1 p.m. every day and from 2 p.m. and 3 p.m. on Monday. Requests for printing may be slipped under the door.

**DON'T DRIVE BY,
DRIVE IN AT THE
SIGN OF THIS FLYING A**



**You'll be pleasantly surprised
at the fast service and the
quality products we offer at**

**ASSOCIATED
SERVICE**

895 North Main. Phone 1291

**"One trial stop will
convince you."**

FOR GOOD FOOD & SERVICE

PARTY SERVICE & DINING ROOM

Bring Your Friends

and Enjoy an Evening of Good Fun



PHONE 1265 — 91 WEST CENTER

SCHAUM'S OUTLINE SERIES

including

**THEORY AND SOLVED
PROBLEMS**

COLLEGE PHYSICS,

including 425 SOLVED PROBLEMS

COLLEGE CHEMISTRY,

including 276 SOLVED PROBLEMS

ANALYTIC GEOMETRY,

including 345 SOLVED PROBLEMS

CALCULUS,

including 974 SOLVED PROBLEMS

DIFFERENTIAL EQUATIONS,

including 560 SOLVED PROBLEMS

ENGINEERING MECHANICS,

including 400 SOLVED PROBLEMS

THE BOOK TABLE

36 West Center — Logan, Utah

BILL BOCKUS

Will be Back at the

MEL-O-DEE RANCH

**This Friday, the 23rd, and Every
Friday from 9 p.m. to 12 midnight**

Also Dance to the Music of

ART SMART

and His Combo

at The Ranch Each Saturday Nite

MEL-O-DEE RANCH

North Main

Personal Loans

Quick-Confidential Service

Logan Finance Co.

21 Federal Ave. Phone 40

This in Sports

GARY R. BLODGETT

The Utah State Aggie hoopsters will wind up their "west of the Rockies" home stand next Monday night when they tangle with the Montana University Grizzlies on the Aggie hardwood.

The Aggies will play two previous games Friday and Saturday with the Utes and Cougars. Both games are away.

Utah State, with a one-win and three-loss record, will enter the week end contest with a "do or die" proposition. The Aggies will have to win at least a split with the southern teams if they hope to stay in the thick of the Skyline Eight race.

Cook Receives Honor

Bert Cook, all-conference forward and member of Look Magazine second all-American basketball team was recently selected on the first Skyline Conference team as selected by Ned Irish, basketball president of Madison Square Garden. Cook was selected by Irish on a picked team of players from the Skyline Conference who have played in the Garden.

Bert is now playing with the Fort Lee, Virginia Travelers while serving for Uncle Sam. Upon release from the service he will join the professional New York Knickerbockers to fulfill a contract he has already signed.

Rumors Are Flyin'

Rumors have been flying that the Aggies are going to have a boxing team this year. Nothing definite has been picked up from this corner but if anything develops—we'll let you know.

Another rumor this time from the state legislature is that the appropriations committee has cut the fund for the Utah State College from five to three million dollars. With this cut—if true—will definitely reduce expenditures from our athletic department which is already "undernourished."

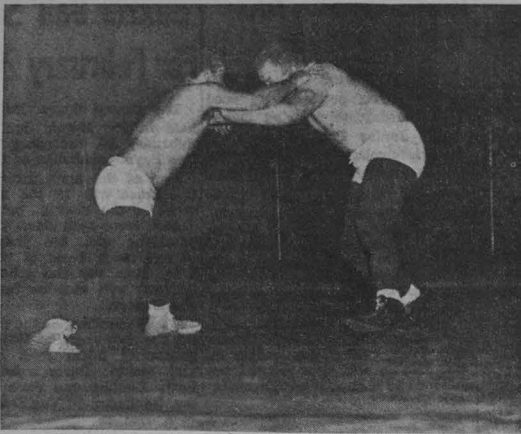
Ags Drop Swim

Utah State's swimming team found that it's going to be rough going during the present season, on this side of the conference at least, as they finished behind Utah and Montana in a triangular meet at Missoula, Mont., last Saturday.

Utah showed plenty of class with 57 points well ahead of Montana with 18 points and the Aggies with 15.

Senior Jim Harris captured the only first place for the Aggies, that coming in the diving event. Harris is a two-year letterman on the swimming squad. Ernie Hartman got a third place in the 200 yard back stroke as Cal Quinney got a third in the 220 yard free style. The other points were scored by the Aggie 400 yard relay team of Stan Peterson, Hartman, Quinney, and Larry Hansen who won a second place spot.

Coach Tod Carlini reports that the Aggies will be the host to Utah and Montana in another triangular meet on Feb. 14, at 2:00 p.m. in the Logan senior high school pool.



Utah's Tiny Grant grapples with Aggie Ted Ramsdel in heavyweight division. The Utes took the wrestles by a 25-11 score Friday night.

Ag Grapplers Lose to Utes

BY CLAIR PETERSON

Utah State's inexperienced grapplers were defeated by the Redskins of the University of Utah, 25-11 last Friday evening following the Aggie-San Jose State basketball game.

The fast working Utes pinned five Aggie matmen while the Staters garnered two decisions and one forfeit.

The 177-pound weight showed the best match of the evening. Fred Wraayer, Utah captain, pinned Joe Reynolds of the Aggies with three minutes of the match gone. Draayer was by far the outstanding wrestler of the meet.

The heavyweight match was very comical when Ted Ramsdell of the Aggies, tipped the "Toladoes" at 186, was pitted against Charles "Tiny" Grant, who weighed in at 283 pounds. Ramsdell substituted for Larry Montgomery, who was sidelined with a shoulder injury. Ramsdell lasted less than two and a half minutes, but the spectators saw a very good scrap despite the weight advantage of Grant.

Next Farmer foe will be the Bobcats of Montana State College at Bozeman, Montana. The Aggies will leave Logan Friday morning and will meet the Bobcats on Saturday afternoon. George "Doc" Nelson's team will be out for their first win this season when they travel north this week-end.

This defeat was the second this season. Against BYU they fought to a tie in Provo. They have lost to Wyoming and Utah.

The summary:
Utah 25, Utah State 11.
123—Glen Billings, Utah, pinned T. J. Nakamura, Aggies, 2:30 of first.

130—Ralph Parkinson, Aggies, won by forfeit.

137—Boyd Whitby, Aggies, dec. Bob Rose, Utah, 8-1.

147—Bob Detton, Utah, pinned Lynn Yeates, Aggies, 2:00 of second.

157—Max Grunig, Aggies, dec. Owen Burton, Utah, 4-0.

167—Don Rydalah, Utah, pinned Joe Reynolds, Aggies, 3:00 of first.

177—Fred Draayer, Utah, pinned Datus Maughan, Aggies, 1:10 of second.

Heavyweight—Tiny Grant, Utah, pinned Ted Ramsdell, Aggies, 2:30 of first.

Winter Carnival Plans Are Made

The department of physical education recently announced its plans for this year's winter carnival. The carnival will be held on February 11, 12, and 14. The events will be much the same as last year's.

The date of beginning on all campus sculpturing will be announced on all Intramural bulletin boards. The sculpturing will be conducted in accordance with the snow conditions. Organizations will have four and a half days to complete their sculptures according to Ray Watters, head of the intramural program. Judges will be on call when sculpturing is finished.

Campus Events

The program of events consists of the Men's snowshoe race to be held on the campus at noon on February 11. The Women's snowshoe relay will also be held that day. The Men's snowshoe relay will be held February 12 at noon on the quad.

Saturday, February 14, the skiing events will be held at Beaver Bowl in Logan Canyon. Buses leave from the fieldhouse, from Center and Main and from Fourth North and Main from 8 to 9 A.M.

The cross country will be held at 10 and the Women's downhill at 10:30. The Men's downhill will start at 11 and run until lunch.

At 1 the women's slalom will start and at 2 the men's slalom will get underway. The final event of the day, the men's ski relay will begin at 3.

There is a list of general rules that must be observed by the people competing in the snow carnival.

1. Each team must furnish and be responsible for its own equipment.

2. Snowshoes will be furnished by the intramural department.

3. All contestants must report to the clerk of the course at the time designated or forfeiture will be declared.

4. Climbers will be illegal for any race.

5. All contestants must check out a number at the recorder's table and pack up the course. Anyone not packing course will be disqualified. Cross country skills are illegal.

Please Observe Rules

The intramural department hopes that these rules will be

Femorals

Intramural basketball officially opened last week with a field of seventeen teams playing. Tonight Kappa Delta meets Alpha Chi at 4:00 and Faculty plays Lewis at 5:00. Next week's schedule is as follows:

Tues. 4:00—Sparkettes vs. Balls.

5:00—K. D. vs. L. D. S.

Wed. 4:00—Lewis vs. Smith

5:00—Chi O. vs. Alpha Chi

Thurs. 4:00—Skippers vs. Rockets

5:00—Balls vs. Faculty

Spectators are invited to attend all the games if they wish to. They are held in the Women's gym.

Names of entrants for badminton must be into the intramural office tomorrow. Also, managers are urged to hand in the names of their winter carnival entrants.

Winter Carnival Student Chairman for women is Palma Lundahl and Student Manager is Bette Reese. In order to get entree points, each team must enter 2 of the four events scheduled. They are the snowshoe relay, sculptur-

observed at all times. Any violation of them is sure to cause ill feelings and will mar the purpose and scope of the event.

Officials for the day will be Robert Paul, student manager for men, Betty Reese, student manager for women, Ray Watters, general chairman for Winter Carnival, Dave Fausett, student chairman for men and Palma Lundahl, student chairman for women.

ing, women's downhill, and women's slalom.

The Women's Athletic Association extends congratulations to its President, Palma Lundahl, on being elected the Queen of Openhouse.

Team Point Standings

Sigma Kappa	330
Alpha Chi	310
Chi Omega	235
L. D. S.	222
Kappa Delta	99
Theta Upsilon	78

Independant League

Skippers	361
Rockets	355
Kerr	279
Balls	142

SKANCHY'S FOOD BAR

DOWN THE HILL TO GET YOUR FILL

Breakfasts
Lunches
T-Bone Steaks 1.00
Cold Storage
School Supplies
Drugs
426 North 5th East

Why Go Down Town and Pay Higher Prices for Repairs?

EXPERIENCED TUNE UP MECHANIC ON DUTY

CROCKETT MOTOR CLINIC

3 BLOCKS EAST OF FIELD HOUSE

AFTER THE SHOW OR DANCE

BE SURE TO

MEET THE CROWD

at

BLAINE'S DRIVE INN

BLAINE RICHARDSON, PROPRIETOR

Week Days and Sundays 6 a. m. to 11 p. m.

Saturday, 6 a. m. to 1 a. m.

BOWLING
Special Student Rates

25¢ 'Till 7

30¢ Henceforth

Open Daily and Sundays

Openings for Men, Women and Couples

In Leagues. Anyone Interested, See Us

BOWLING CENTER

223 North Main

Phone 2502-W

For Your Valentine
WINGET'S CHOCOLATES
AND ICE CREAM

Specialties for Your Pleasure

WINGET'S ICE CREAM

119 South Main

Phone 250



GREEK GYRATIONS

by Rose Marie Wright

Chi O's, K D's Pledge Girls

NEW KD PLEDGES

Pledging ceremonies were held at the Kappa Delta house Monday night. New pledges are: Connie Johnson, Kathryn Kay, Jo Ann Ricks, Editha Carlson, Carole Bingham, Vernice Hillyard and Joyce Lund-green.

Pi Knp's acted as hosts at an exchange after meeting Monday.

CHI OMEGA PLEDGE

The Chi Omega house was the scene of pledging ceremonies for Marian Beveridge Monday night. Kappa Sig's played host to Chi O's at an exchange held Monday night following meeting.

Visiting active meeting were alumnae, Mrs. Grace Anderson and Mrs. Mimi White.

PI KAP OFFICERS

Van Dunn has been appointed as secretary of the Pi Kappa Alpha chapter by President Rex Nelson. Other newly appointed officers are: Marian Haslam, social chairman; Lee Cantwell, song leader; and Bill Holt, Shield and Diamond correspondent.

KAPPA SIGMA EXCHANGE

An exchange was held Monday night between the Kappa Sigma's and the Chi Omega's. Refreshments were served at the Kappa Sigma house, after which a dance was held at Hill Crest.

During the past week Mr. Don Steel was a visitor at the Kappa Sig house. He is awaiting further orders after being stationed at Fort Bliss, Texas since last June. Visiting now are La Dick Howell and his wife, Dick is on his way to Korea.

SAE BASKETBALL GAME

Sigma Alpha Epsilon's active chapter played a basketball game with the pledge class and the pledges took the game 44 to 38.

The chapter plans to attend a wedding reception in honor of Brother Jack Bickmore and Diane Tueller. The reception will be held at the bride's home following the wedding, Feb. 3.

ALPHA CHI EXCHANGE

An exchange was held with Sigma Chi's Monday night. Alpha Chi's candidate for Snow King is Pat Preston.

SIGMA NU ASSEMBLY

Sigma Nu's pledge class has challenged Kappa Delta sorority on the presentation of an assembly. The theme for each of the assemblies will be submitted by the opposing group. Jerry Sherratt will serve as chairman of the Sigma Nu assembly.

SIGMA PI VISITOR

Sigma Pi's traveling secretary for the western states, E. C. Turner arrived last Sunday and plans to spend some time with the chap-

ter here on the campus.

The Pledges' Frontier Party will be held Feb. 21. The Theta Province Convocation is set for Feb. 14 and 15 at Pi Chapter on the University of Utah campus.

Paul Fritz is chairman for Sigma Pi's Snow Carnival activities.

THETA U. PARTY

A popcorn party was held last week for the girls and rushees of Theta U. A photographer took group pictures throughout the evening.

BETA PI FORMAL

Beta Pi members and pledges made plans for their Winter Formal and banquet to be held Feb. 7. After their regular meeting they attended the Delta Phi meeting at which Rabbi Adolph Fink gave a talk on Judaism.

SIG'S WINTER FORMAL

Themed to "Winter Overture" and inspired by an enthusiastic set of musicians, Joe McLean and his combo, the Sigma Chi Winter formal was staged Saturday night in the Sky Room. Chairman was Bob Showalter.

An exchange with Alpha Chi Omega was held Monday night with Carol Chaffin highlighting the program with singing.

The annual pledge party, honoring the activities, is scheduled Saturday under the direction of pledge president, Jerry Alvord.

DELTA PHI "DATE NIGHT"

Wednesday evening was Delta Phi "date night" at the Institute. A special program and speaker was planned.

Sunday evening a fireside will be held at 9 p.m. in the Institute. Dr. Ira N. Hayward will be guest speaker.

At the regular fraternity meeting next Wednesday, elections will be held to choose the officers for the coming year.

PINNED

Pattie Buehler, Alpha Chi Omega, to Skip Nelson, Sigma Chi. La Vonne Jensen, Alpha Chi Omega, to Floyd "Shott" Davis, Sigma Alpha Epsilon. Marilyn Sorenson, Chi Omega, to Dean "Diz" Herd, Sigma Nu. Kernal Jerman, Alpha Chi Omega, to Ray Carlson, Sigma Chi.

Prom Queen Is Arlene Meyer

Crowned by Miss Utah of 1953, Arlene Meyer, petite Aggie coed last Thursday reigned as Queen of the Junior Prom.

At intermission time of the prom, Burton Howard, junior class president announced that attendants to Queen Arlene were Jo-lyne Ahlstrom and LaRue Farnes.

Ralph Flanagan, the number one band in the land, provided music for the prom, which was set in the main ballroom of the Student Union building.

More than 1000 couples crowded the ballroom. LaVon Brown, Miss Utah, placed the honors on Miss Meyer, and then treated the audience to a chorus of "Embrace Me You."

'Buzzer Ball' Set For February 20

The annual Buzzer Ball will be held in the Union building on February 20, according to Rilla Dee Payne, chairman of the dance.

One of the main attractions of the dance will be the announcement of the twelve personalities chosen from each class. These personalities will be judged and chosen on a basis of what they have done for the school. Their pictures will also be featured in the Buzzer.

Other members of the committee for the Ball are: Pat Williams, co-chairman; Addis Jean Fuhrman and Jackie Barry, decorations; Patty Buehler and Varo Christensen, intermission; Van Dunn, dance

Dance Revue

(Continued on Page 9) alind Zollinger, Gale Smith, Gifford, Joan Ward, Peterson, Janet Swenson, Hamilton, Jo Ann Johnson, Johnson, Elaine Williams, Carlson, Larry Hansen, Browning, Weldon Hyer and Marshall.

cards; and Jerry Sherratt, city.

The dance, to begin at 9:00, be semi-formal and admission be by student body cards.



LOGAN
RADIATOR
SHOP
2745 N. 600 E.
115-80

YOU'LL BE AMAZED WHAT YOUR

Old Watch

IS WORTH DURING Needham's

Greatest TRADE-IN WATCH Sale



Man's or Lady's
BULOVA
choice
\$45⁰⁰
\$1.00 Weekly



17 Jewel
ELGIN
\$39⁷⁵
\$1.00 Weekly



17 Jewel
ELGIN
\$47⁵⁰
\$1.00 Weekly



21 Jewel
BULOVA
\$49⁵⁰
\$1.00 Weekly



Self-Winding
BULOVA
\$59⁵⁰
\$1.25 Weekly



17 Jewel
WYLER
\$71⁵⁰
\$1.50 Weekly



Man's or Lady's
ELGIN
\$65⁰⁰
\$1.25 Weekly



Man's or Lady's
WYLER
\$69⁵⁰
\$1.50 Weekly

FRED'S FLOWERS

Distinctive Flowers

29 WEST CENTER — PHONE 227-W

EUROPEAN TOUR FOR COLLEGE GIRLS

Only \$950.00 from New York

Visiting England, France, Holland, Germany, Austria, Switzerland and Italy. Cost includes all meals, transportation, hotels, and sight seeing from New York and return. Price \$1050 from Salt Lake City.

CALL OR WRITE FOR DETAILS BEFORE IT'S TOO LATE

UNIVERSAL TRAVEL SERVICE

TEMPLE SQUARE HOTEL

Salt Lake City, Utah

Phone 5-6552



125 North Main — Logan, Utah

NO EXTRA
CHARGE
FOR CREDIT