

Utah State University

DigitalCommons@USU

The Utah Statesman

Students

2-19-1971

Student Life, February 19, 1971, Vol. 68, No. 52

Utah State University

Follow this and additional works at: <https://digitalcommons.usu.edu/newspapers>

Recommended Citation

Utah State University, "Student Life, February 19, 1971, Vol. 68, No. 52" (1971). *The Utah Statesman*. 1411.
<https://digitalcommons.usu.edu/newspapers/1411>

This Book is brought to you for free and open access by the Students at DigitalCommons@USU. It has been accepted for inclusion in The Utah Statesman by an authorized administrator of DigitalCommons@USU. For more information, please contact digitalcommons@usu.edu.



Student opinion poll determines fee use

Reporting:

Terry Gilson
'Life Writer

A sample of the student population has been polled to determine reaction to the allocation of funds from the \$18 activity fee.

"This poll will serve as a guideline as to how student funds should be distributed," said Mark Anderson, ASUSU financial vice president.

Anderson noted that the poll was an outgrowth of the Financial Commission which was organized this year to make up the student budget. The poll idea was considered the most accurate and fair way to determine how the students feel about the manner in which their fees are presently being spent.

Students Aid In Poll

The poll was taken by the Institute of Opinion Analysis, a semi-professional group consisting of both USO students and professional workers.

According to Anderson, "Students should have the major voice as to how the money is allocated." He noted that through the poll, students will have a say as to where their fees will be spent.

Another purpose of the poll was to determine whether or not claims of inequality in fee distribution by specific groups on campus, such as the graduate students, have any basis in fact. Anderson stated that if these injustices do exist, student government and the administration should try to correct them.

Determine Budget

Questions answered in the body of the poll will be used by Anderson and the Financial Committee in determining the budget for the next school year. The optional statements at the end of the questionnaire will be used by ASUSU student body officers to get ideas as to what the campus population wants student government to work on.

Certain "demographic features" — specific statistics concerning factions within the polled group, were included with the questionnaire. These features will be broken down and published in later issues of *Student Life*.

"Finances are the backbone of student government," Anderson said. He feels that since most student activities are funded from the activity fee, finances are a major concern to the campus population.

(See pages 6 and 7 for the questions and responses polled.)

student life

Volume 68, Number 52

Utah State University, February 19, 1971

12 pages

Growing pains felt by campus movies

Reporting:

Kevin Jensen
'Life Writer

Many students have been turned away from the weekend UC movies, according to Larry Cooper, UC movie committee chairman.

The UC auditorium "isn't big enough," Cooper stated. "We have to turn away 50 or more people."

The movies shown at USU are all chosen and arranged for by the UC movie committee. This committee consists of 25 student members who not only select these movies, but also have the responsibility of promotion and selling tickets.

Movies Too Old

"Many people complain some of the pictures are old," Cooper said. "The reason is simple. The only type of projector that we have access to is 16 mm and the theatres downtown use 35 mm projectors. The movie producers don't release movies for 16 mm use until those places using 35 mm projectors have all had a chance to show them."

"The committee is hopeful that by next year we will have enough funds to purchase a 35 mm movie projector. If this is purchased, the movies shown will be more up to date. The 35 mm movie will use the whole screen instead of the small picture that is visible when using the 16 mm projector," Cooper explained.

Cooper also said that the committee is now in the process of locating a 35 mm machine but

the biggest problem will be allocating the money.

Price Increase

Another complaint about the movies is the increase in price. Prices rose from 35 to 45 cents per show. The reason for the increase, Cooper said, was because the movie producers had to raise their price on pictures from 35 to 50 percent, because of the financial problems they face.

In spite of the increase people were still turned away from the more recent movies, according to Cooper. The auditorium which seats 300 was completely filled every night for "To Sir With Love," for example.

Movies to be shown next quarter include: "The Rievers," "Man Called Horse," "In Cold Blood," "Cactus Flower," "Bob and Carol and Ted and Alice," "Interlude," "That Cold Day In The Park," "The April Fools," "With Six You Get Eggroll," and "Luv."

Cooper predicts that with these

shows being offered they will have consistent capacity crowds during spring quarter.

Money to Company

The committee has to guarantee the movie producer 50 percent of the gross return on the picture shown or the price they've set for each movie, whichever is greater. For example "Cactus Flower" costs \$250 to rent from the producer or 50 percent of the gross return, whichever is greater.

The price for a movie such as "The Sterile Cuckoo" is \$400 or 50 percent of the gross when using 16 mm. Using a 35 mm projector the price is \$400 or 35 percent of the gross.

Students often ask where the profits from these movies are used. "Under the direction of the Student Activity Board, all profits provided by the movies go back to the board to sponsor movies, lectures, dances, displays, and various other campus activities," Cooper said.

Benefit night to raise loan funds

International Coordination Council has planned a benefit concert to be held in the Fine Arts Center theater tomorrow at 8

p.m. It will include singing, dancing, and instrumentalists from various nations.

This concert is part of a money raising project initiated for the George Meyer Foreign Student Fund. The loan fund was established by USU some three and a half years ago by a number of staff members, the ASUSU student senate, members of the foreign alumni including the Iranian Foreign Minister, and the efforts of many of the foreign students on campus.

Essentially, this program is an effort to help the approximately 490 foreign students now attending USU, many of whom have unusual financial difficulties.

The fund is a short term emergency type with low interest rates and no collateral required. The university loans officer administers the fund on a day to day basis, with the advice of the foreign student adviser, Lamar Frandsen.

Benefit concert will feature a Thai classical dance, performance on the Indian Sitar, and a group of Tahitian dancers brought to Logan from Salt Lake.

Admission will be charged, with a reduced price for students with activity cards.



Photo by Tom Caswell

FACILITIES TOO SMALL — The UC movie committee has had to turn many students away from showings of the UC movies.

The UC auditorium, where the movies are shown, only seats 300.

Editorial

Faculty discounts: are they necessary?

Action by the Administrative Council resurrecting the not-yet-cold faculty discount cards from their burial last spring has caused a stir among students who are ineligible to reap the fruits of the discount.

Recipients of the faculty discounts are accorded ten percent off purchases in the University bookstore.

Prior to its demise last spring, card holders abused their privilege by letting friends and other persons ineligible for the discount use the card. Student senate became incensed over these abuses and abolished the cards, leveling a condemnation of the entire procedure.

But the current regime, under the leadership of ASUSU President Alan Croshaw, reinstated the cards with a few stipulations aimed at curbing the abuses of last year. (Croshaw drew up

the proposal which was later accepted by the Administrative Council.)

The Administrative Council hopes to alleviate abuses connected with illegal use of the cards by requiring photographs of card holders similar to those on student body cards. This will hopefully prohibit persons not eligible for the reduced rates from receiving the preferential treatment.

The main cause of student dissatisfaction over the re-issuance of the cards has been that issuance only to faculty and administrative officers constitutes discrimination.

According to Dee Broadbent, vice president for business, faculty discount cards are a customary practice in most parts of the country.

Evan Stevenson, Broadbent's assistant, says faculty members get

discounts anyway from publishers and other book stores, and that the discounts permitted at the University bookstore will provide added income to help pay off a bond on the University Center.

Concerning students receiving similar discounts, Stevenson says that since the students make up the bulk of the business done in the University bookstore, it would not be feasible to accord them with the same discount as accorded the faculty.

This ten percent markoff covers not only books and other school supplies, but all merchandise in the store. This includes toothpaste, records, beer mugs and sweatshirts, which, as you know, comprise the necessities of performing faculty and administrative duties at a university.

Chris Pederson

Readers write

**SMC
shouldn't
pressure
ASUSU**

In response to what I consider a wonderfully inflammatory, but short-sighted letter by Mark Peckham I would like to offer comment on the issue at hand.

I don't believe it is the job of the ASUSU Executive Council, or any other body of student government at USU, to become a manufacturer of resolutions or a facsimile thereof. Student government should act upon student business. If the Council's constituency demands a resolution or action on certain issues, then they might choose to conduct referendums, and hopefully very few.

In no way should the SMC be allowed to pressure an opinion through government channels without qualifying the opinion in terms of how many it

represents. If "X" percent of the 8,000 studentbody express rage with any current or historical issue, then, let them do so.

Let's just make sure that a small group of students don't cause this public institution to go on record (or apparently so) as approving or denouncing any issue. Public institutions are not created to make policy. They are by no means void, but are, and should remain, opinionless.

To those of the SMC or any other special interest group -- you are participating in life by expressing opinion. That is fine, but don't expect the Executive Council or the entire student body to front for you.

Bill Martin
Student



WIN BIG TONIGHT

8:30

CASINO ARABESQUE

FREE

Dancing
Entertainment
Pool

Bring pennies for
movies
prizes
gambling

Student Activity Board

Readers write

Which government draws blame?

Editor:

I would like to make a reply to Mr. Peckham's letter to the editor in the Feb. 15th issue. First of all, Mr. Peckham, I wasn't really sure (and maybe you weren't either) as to which student government you were disenchanted with for not passing a resolution in regard to the war in Vietnam. Was it the '67, '68, or '70 Executive Council? Are you aware that these councils are elected annually? It seems to me that neither myself or my colleagues could be held responsible for what was or was not done in previous years. But this is beyond the point.

I personally believe that we exist as a council not to dabble in political issues of a state or national level, but rather to give the students of this campus a voice in the problems and issues of local relevancy. I, for one, did not campaign, nor was I elected on whether I was in favor of the war in Vietnam. Could I then express my view point as being representative of the students at USU when I did not make my opinions known during the elections? The scope of our authority, as I see it, is limited to the issues of this campus. If student government should extend itself into the realm of national politics it should

be done only by the overwhelming approval of the entire student body. As for there being a referendum, I wasn't aware that it was definitely decided to have one. Just to summarize, I think students should be encouraged to form and express their political opinions. Student government should take the role of providing unrestricted versatility of political philosophies, but should not make official statements as being representative of student attitudes about national issues.

Paul Michaelson
Administrative Vice Pres.

NOW
★ **PLAYING** ★

DIRECT FROM ITS
SENSATIONAL
ROADSHOW
ENGAGEMENT! **Tora! Tora! Tora!**

SHOWTIMES
TONIGHT 6:30 AND 9:03
SAT. & SUN.
2:00 - 4:23 - 6:46 - 9:29

ADULTS - \$1.50
STUDENTS - \$1.25
CHILDREN - 50¢

NOW FOR THE
1ST TIME AT
POPULAR
PRICES!

UTAH

CARL & DONS
Grocery Store

2084 N. 12th E.

**announces a new
concept to full fill
your grocery needs**

Less than a mile from campus

Hours:
Tues. through Sat. 9 a.m. to 10 p.m.
Monday - 9 a.m. to 7 p.m.

Classified Ads

Rates: 1 to 2 issues \$.06 a word per issue
3 issues \$.05 a word per issue
4 or more issues \$.04 a word per issue
Cash in advance or check mailed with ad.
No ads placed by phone.
Deadline: 3 days before date desired.
Lost & Found Free to Students.

JOBS

Interested in selling a needed, well accepted item to schools? Good for summer or full-time. Potential in all states. Call 753-0856 after 7 p.m. (3-1)

BUSINESSMAN'S OPPORTUNITY: Build your own business with the fastest growing industry in America. No limit in income. Write Andy's Opportunities, Box 41, Providence, Utah 84332. (2-24)

FOR SALE

Lhasa Apso Pups - small Tibetan Breed. AKC. Call 752-3626 (2-19)

For Sale: 1952 Military ¼ ton 4x4 Pickup. Excellent Condition. Call 752-0273 (2-24)

LOST & FOUND

LOST: White Triple combination. Reward. Call 752-0193 ask for Shelly. (2-24)

LOST: Black leather gloves in Library on 1st floor. Feb. 8th. 752-6463 before 10 A.M. (2-17)

MISC.

CASH SHOP
We buy and sell almost anything, including used furniture, antiques, radios, T.V.'s, beds, desks, etc. 173 South Main. 753-3071. (1-29)

Small loans on guns, jewelry, skis, etc.
THE TRADING POST
675 No. Main.

CACTUS CLUB

Friday Afternoon: **2 Go Go Girls from SLC**
Friday Night: **Live music - From Ogden - "Clear Sky"**
Saturday - **Live Music - NO COVER**
Candy Will Dance

Westminster College of Salt Lake City, Utah an accredited four-year institution, offers you an exceptional opportunity to...

STUDY ABROAD NEXT YEAR

French Language and Civilization®

Other Semester Abroad courses in German, Spanish, and English Literature and Culture will be offered. For information on these or the French Semester Abroad, send in the coupon today.

FALL SEMESTER, 1971
September 7 - Depart Salt Lake City
September 8 - Arrive Rome
September 9-22 - Free time for optional tour
September 23 - December 18 - School Session
December 20 - Depart Paris
Arrive Salt Lake City

SPRING SEMESTER, 1972
January 31 - Depart Salt Lake City
February 1 - Arrive Paris
February 3 - April 24 - School Session
April 25 - May 9 - Free time or optional tour
May 10 - Depart Rome
Arrive Salt Lake City

CURRICULUM
The curriculum for courses in introductory and intermediate French language, French drama, French literature and philosophy, history, art, and music appreciation is fully coordinated with Westminster's regular course curriculum.

CREDIT
The credit issued by Westminster College for the overseas courses is transferable with approval from the registrar from your college or university.

FACULTY
Professors from both American and European colleges and universities are included in the faculty to provide a broad and diversified academic background.

ELIGIBILITY
Courses are open to (a) college students presently matriculated and in good standing at their college or university (b) students enrolled and in good standing at Westminster College, and (c) high school graduates.

Return to: Westminster Semester Abroad
P.O. Box 1920
Salt Lake City, Utah 84110

Gentlemen:
Please send me complete details on the Westminster semester courses abroad.

☐ Mr. ☐ Mrs. ☐ Miss
My name is
Address
City
State Zip

High School Relations enlarges program

Reporting:

Georgene Stahle
Asst. News Editor

Department of High School Relations is no longer just high school relations, now it is the Department of Relations of Community and School Services.

"We work with junior colleges, and recruitment is still definitely our job, but we have expanded to include community and school services, not just high school relations," said Rodney Clark, coordinator of the department.

Purpose Explained

The purpose of the department is to disseminate information about the university. It sends out extensive mailing information telling high school students about USU and the programs offered here.

If students show an interest in this university, the department tries to help them make the transition from high school to the college programs.

Grants Scholarships

Representatives from the Community and School Services Department sit on the USU scholarship board, aiding in providing scholarships and trying to get financial aid to those students who are in need of it.

The department aids the new students in finding housing arrangements and in orienting them to university schedules.

Last week, for example, the department sent out letters to National Merit Semi Finalists and to high

scoring American College Test (ACT) students inviting them to participate in a special exam for University Club scholarship. Of those asked, 400 came and had a chance to win a \$5,000 scholarship, which was donated by businessmen and raised by the

Development Fund.

Recruits Students

The Community and School Service Department not only offers scholarships, but it takes care of post-high school orientation. Representatives from USU go to the schools to, recruit students.

The department works with ASUSU in sponsoring counseling conferences each fall where high school counselors come. The

February 19, 1971

department also works with the Entertainment Bureau and presents programs in various high schools.

Miniature
Oil
Originals

YOST'S
HALLMARK CARD
and Party Shop
15 North Main

GLAUSERS

is where you
can find a
HOT MEAL and
a MOM away
from home.

25 West Center

If you are a senior...

1971

could be the most important year of your life.

As you contemplate one of the most important decisions of your life, you will want to remember this: it is not just "a job" you are seeking—it should be the beginning of a career. And if it is to be successful, both you and your employer must need and want each other.

To help you with your decision, we invite you to consider the opportunities at Pratt & Whitney Aircraft. Currently, our engineers and scientists are exploring the ever-broadening avenues of energy conversion for every environment... all opening up new avenues of exploration in every field of aerospace, marine and industrial power application. The technical staff working on these programs, backed by Management's determination to provide the best and most advanced facilities and scientific apparatus, has already given the Company a firm foothold in the current land, sea, air and space programs so vital to our country's future.

We select our engineers and scientists carefully. Motivate them well. Give them the equipment and facilities only a leader can provide. Offer them company-paid, graduate-education opportunities. Encourage them to push into fields that have not been explored before. Keep them reaching for a little bit more responsibility than they can manage. Reward them well when they do manage it.

Your degree can be a B.S., M.S., or Ph.D. in:

- MECHANICAL ENGINEERING
- AERONAUTICAL ENGINEERING
- ENGINEERING SCIENCE
- ENGINEERING MECHANICS

If your degree is in another field, consult your college placement officer—or write Mr. Len Black, Engineering Department, Pratt & Whitney Aircraft, East Hartford, Connecticut 06108.



Pratt & Whitney Aircraft

EAST HARTFORD AND MIDDLETOWN, CONNECTICUT

DIVISION OF UNITED AIRCRAFT CORPORATION

An Equal Opportunity Employer

KSOP COUNTRY RADIO

Presents in Person

STARS OF HEE HAW

- * BUCK OWENS
- * SUSAN KAYE
- * BUDDY ALAN
- * DON RICH
- * THE BUCKAROOS
- * BAKERSFIELD BRASS

Tickets: 4.00-4.50-5.00

TICKET OFFICES ARE:

SALT LAKE — KSOP, The Terrace, Fehrer's,
Allied War Surplus Team Electronics
BOONVILLE — Brown's Western Wear
OGBURN — Strubel & Sons, Cross Western
Wear
PROVO — Reams Wrangler Shop
Mail KSOP, P.O. Box 15588 SLC

FRIDAY, MARCH 5TH
2 BIG SHOWS — 7:00 & 9:30

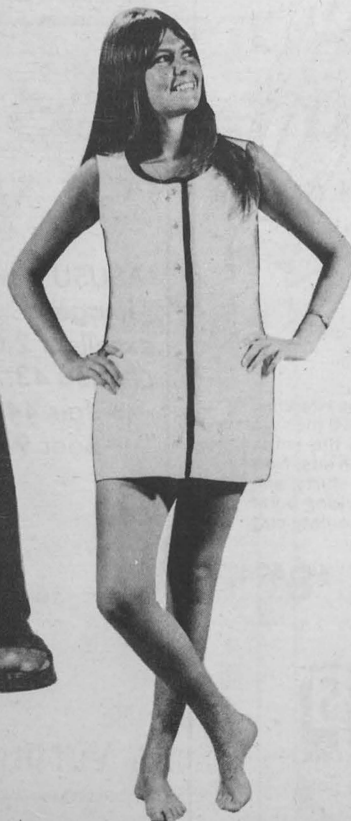
HIGHLAND HIGH

Life Style



Kris Church

You can elect
her the
national college
Queen



Depending on the number of votes SPORT MAGAZINE receives post-marked by Feb. 26, Utah State's Kris Church may be the winner of the national campus queen contest.

Kris was selected by Sport Magazine as one of the five finalists from among the colleges and universities nationwide. A panel selected by Sport Magazine carried a picture and information about Kris, the first of the five finalist pictures to be printed.

The CAMPUS QUEEN will be named by postcard vote. All cards must be post-marked by Feb. 26.

In order to get more votes the USU sports information office has arranged for a bulk mailing rate by using three-by-five cards.

Individuals and groups interested in voting for Kris, may bring any number of three-by-five cards to the sports information office along with enough money to cover the postage. Addressing will be done in the sports information office which is located in the Information Service Building.

Anyone may send in regular post-cards and an unlimited number of them. But only cards will be accepted and must be post-marked by Feb. 26.

Send cards to:

CAMPUS QUEEN CONTEST

P.O. Box 4128

Grand Central Station

New York, N.Y. 10017

GROCETERIA

Dairy and Bakery
Products
Nations
Frozen Foods
Picnic
Supplies
Meats

Big Blues TAKE-OUT

Beef Sandwiches
Ham Sandwiches
Barbeque - Fries
Beverages



Phone
753-1000

H.V.A.

The Happy Valley Arcade
is a New Concept in food convenience
A "CLUSTER" of food shops that fill
your every need.

OPEN EVERY DAY

9:00 A.M. to 10 P.M.
EASY PARKING
FRIENDLY SERVICE

1351 East 7th North
OPPOSITE
JAY ABBE
PARK

BIG**BLUES****SHANTY**

Cozy, Comfortable
Private Booths
Big Blues
Menu

BLUEBIRD**GOODIES**

Candy, Ice Cream
Gifts

the latest "old timer" from BLOCKS



Arrow Collar Man
Collection by
→ Arrow →

They revived the thirties. And the twenties. Now go back even farther. In 1910 the rage in men's fashion fashions were the shirts shown in those Arrow Collar Man ads. Now they're back, Arrow Collar Man shirts, and BLOCKS have got 'em. Stripes, long point collars, higher neckbands, up-to-date cuff styles.

\$8⁵⁰

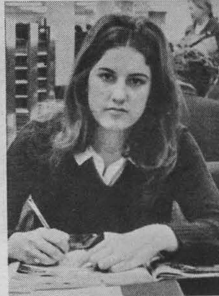
BLOCKS
CLOTHES FOR EVERYONE

Fourth North and Second East

Open 10:00 to 7:00 Mon. Thru Sat. . . Fri. 'til 9:00

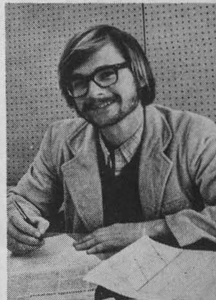
LIFE STYLE AS

by Tom Caswell



I really can't see anything wrong with coed living as long as the kids go into it with the right attitude and not as if they were going to be able to participate in some year-round sex orgy.

Linda Harmon



USU should try coed living as an experiment with consenting students and families. The experimental atmosphere of coed dorms should pose a stimulating and exciting possibility rather than the impending social clash which it seems to. This experimental atmosphere is imperative to the purpose of any university.

Rick Fessenden



Mental picture of coed living! S
it and the opponents abhor it f



I'm against coed
share apartment
point of morals

Following is a questionnaire used by the Institute of Opinion and Attitude to measure student attitude toward selected expenditures. To the right of each question response is the percentage of interviewees that selected that response.

**'ASUSU govt.
image is . . .
excellent 2.0,
good 43.7,
fair 44.4
poor 9.9'**

Do you feel that the image of the ASUSU Student Government is:	In your opinion, does coed living improve the campus?
a) excellent 2.0	a) yes
b) good 43.7	b) no
c) fair 44.4	c) don't know or no opinion
d) poor 9.9	
In your opinion, is the USU image being adequately projected outside the university?	How important is it to have coed living at Utah State University?
a) yes 34.8	a) very important
b) no 48.4	b) important
c) don't know 16.8	c) unimportant
Do you feel that the USU image is being adequately projected within the university?	(If a or b, ask:)
a) yes 49.0	a. How do you think it should be financed?
b) no 44.4	a) from student fees
c) don't know 5.9	b) buy it yourself
Do you feel that Utah State University should have student government on a class level?	c) combination of a and b
a) yes 57.8	d) other
b) no 35.7	
c) don't know 6.5	Are you familiar with the literary magazine?
Do you like the fact that we have cheerleaders at Utah State University?	a) yes
a) yes 72.5	b) no
b) no 10.5	c) don't know
c) don't know or don't care 16.3	Do you think the literary magazine should be expanded?
Do you like the fact that we have a marching band at Utah State University?	a) continued as is
a) yes 74.8	b) expanded
b) no 7.7	c) limited
c) don't know or don't care 17.4	d) discontinued
	Do you feel that as a Student Life is:
	a) excellent
	b) good

Survey views!

What is your opinion regarding coed dorms at Utah State?



proponents like the idea because of the reason.



I don't think it is right. It is just another step towards freer morals and I'm against that. This has been tried in Sweden and the result hasn't been so great - its just asking for trouble!

Mary Swasey



Chris W. Thurgood

Personally, I like the idea of coed dorms. I can see having boys in my dorm (Moen Hall), may be not in my apartment, but at least in the same building.

Linda Grow

This percentage is an adjusted amount that only includes those individuals that responded to that question and therefore does not include that small percentage of persons who could not or would not respond to the particular question.

hascot?	c) fair	32.9	Have you ever attended any of the following programs of the Concert and Forum series at USU?	a) lectures	69.0
41.3	d) poor	21.9		b) plays	55.5
49.00				c) Classical concerts	56.1
8.4	Would you prefer the Student Life to be distributed:			d) popular concerts	69.0
	a) more often	14.8		e) none	3.9
	b) as it is now	73.5		f) don't know	2.6
7.7	c) less often	11.0			
41.9	Should Student Life increase coverage of:		Have you ever watched the campus newsreel?	a) yes	49.0
50.3	a) campus news	51.4		b) no	47.7
	b) state news	8.2		c) don't know	3.2
	c) national news	15.8			
	d) international news	7.5	(If a, ask:) a. In your opinion, was it?	a) excellent	7.7
	e) it's okay now	17.1		b) good	50.0
26.7	How do you think Student Life should be financed?			c) fair	29.5
36.7	a) from student fees	78.6		d) poor	10.3
34.4	b) individual payment as you buy it	4.5		e) don't know	2.6
2.2	c) individual payment on a subscription basis	1.9	Do you have access to an FM radio?	a) yes	69.7
	d) combination of a&b	13.6		b) no	29.7
	e) other	1.3		c) don't know	0.6
	Have you ever participated in the intramural program at USU		a. Do you listen to KUSU-FM:	a) frequently	10.6
should be:	a) yes	35.5		b) occasionally	42.5
46.0	b) no	64.5		c) never	46.9
30.6	In your opinion, should the intramural program at USU be:				
12.9	a) expanded	38.8			
8.9	b) kept the same	55.3			
	c) cut back	3.9			
newspaper,	d) discontinued	1.3			
5.8					
39.4					

udent activities

Be as proud of your girl as you are of your diamond
CHOATE JEWELRY



Now Playing "Joe"

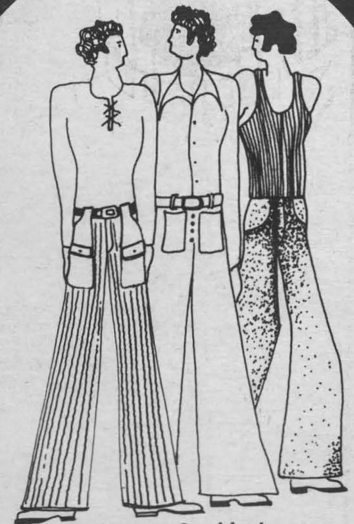
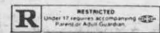
IS A RIP-SNORTER. A TRIUMPH!" —Judith Cris

"★★★★BRILLIANTLY CONCEIVED, BRILLIANTLY DONE! DEVASTATINGLY FUNNY!"

Adults \$1.75

Feature Times

6:30 - 8:25 - 10:10



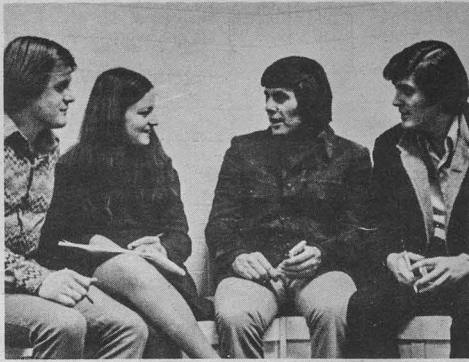
Bush pants, Swabby jeans and other things



MUSIC STYLE

Lettermen: 'our theme is happiness'

by Nanette Larsen



INTERVIEW — Student Life reporter Nanette Larsen interviewed the Lettermen last Thursday night after their concert in the Assembly Center.

Tony, Jim, Gary -- the Lettermen. They're just ordinary people with a special touch added -- a magnetic charm and warmth reflected in their sincere interest in people. Their engaging, friendly smiles come on just as strong off-stage as they do on-stage.

As I sat in the audience last Thursday night, listening to the Lettermen belt out their last song "Goin Out of My Head," I thought they would probably be in a hurry to leave. I could see myself rushing in and out of their dressing room, cramming in as many questions as I could into the little time they would give me.

Quite Willing

But the Lettermen were more than willing to answer any, and all of my questions. I sat down in the middle of them, and they eagerly shared their ideas with me. They were no different than they had been on-stage. They like to ham it up a bit when they're not performing too. I ran out of my prepared list of questions, and talked to them for a few more minutes about "anything."

Liked Audience

What the Lettermen liked at USU best was how respectful the audience was -- there were no wisecracks in between numbers.

I asked if they ever tried to get a certain message across to their college audiences, Gary spoke

up, "Too many groups are doing that now ... we're just here to have a good time, not to impress people."

Tony added, "The world is so pressured nowadays ... Our message is happiness ... I feel its a crime so many groups use the stage as a soapbox."

Blind Acceptance

Tony said, "many people like certain musical groups so much that they will believe what ever they say -- whether it is right or wrong. Usually these musical performers don't know as much about the world as they think they do."

Tony commented, "College audiences expect more involvement than in the past. They used to sit there behind a glass shield, expecting us to perform. The audience is now more aware of being part of the concert."

The Lettermen have never composed their own music. Their favorite writers include Bacharach, Webb, and McCartney. Their favorite song and also their biggest hit is "Goin Out of My Head."

Lettermen Sound

Tony said that one of the reasons the Lettermen can stay on top is that they always keep a certain 'Lettermen sound,' and adapt it to the current music.

The Association was mentioned by all of the Lettermen as one of the best current recording groups, in their opinion. Jim thinks that Chicago, and Blood, Sweat, and Tears are instrumentally fantastic.

If you've seen one pelican, you've seen 'em all. Only one brown pelican hatched in California this year, thanks to the Benevolent Order of Pesticide Manufacturers (BOP'M)

by Flan

TIME IS RUNNING OUT . . .

for application to the
Air Force ROTC 2 year program.

if you are

- interested in financial assistance
- in good academic standing
- physically qualified
- and have 2 years of college left

then contact the

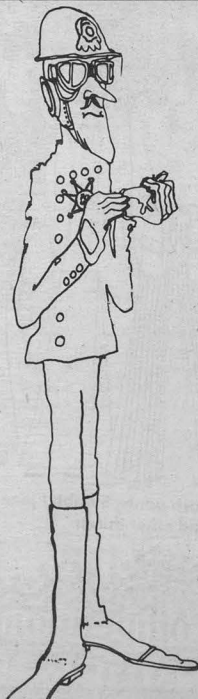
Department of
Aerospace Studies
Phone 752-2355

But hurry!

Time is running out.

Just three weeks

until You'll be in the "KNOW"



ASUSU and S.T.A.B

take Great Pleasure in issuing

The New Citations

Here from smashing engagements in San
Diego and Salt Lake City

Tonight and Tomorrow night

(Friday & Saturday)

8:30 p.m.

U.C. Ballroom

A Buck a Piece

**Due to our Faith
and his Prayers
ROGER WILLIAMS
is now
FREE for Everybody**



ASSEMBLY CENTER DEDICATION

Friday, Feb. 26, 7:30 p.m.

**Tickets are FREE and Reserved. 4,500 tickets will be held
for Students until Wednesday, February 24.**

Pick up yours before someone else gets them!

Playoff site? U-State by a dollar-sign!

Reporting:

Greg Hansen
Sports Editor

It's pure speculation, but the NCAA should confirm Logan as the site for the Western playoffs in the near future.

Despite the apparent lobbying tactics of the Western Athletic Conference officials, the USU Assembly Center has too much to offer for the NCAA officials to look elsewhere.

Reportedly, WAC moguls are offering both Laramie, Wyo., and Albuquerque, New Mex., as

playoff sites, asking for a neutral court in which to hold the playoffs.

But the NCAA was burned in the financial alleys last year at the Seattle-regionals and are very skeptical about another poor-gate this year.

For plain monetary reasons, Utah State should obtain the four-team playoff field.

Lost \$100,000

In last season's Regionals in Seattle, NCAA coffers netted \$36,000. But at the other three Regional sites, revenue's of \$136,000, \$130,000 and \$75,000 were taken in. Needless to say, the NCAA is looking for every cent they can get.

That's why Logan is the logical choice.

Should Laramie be the pick, I'm sure they'd fall far short of a sellout ... ditto for Albuquerque. Neither local school (Wyoming or New Mexico) will be involved in the playoff, so drawing potential

is limited to say the least.

Should U-State be chosen as the playoff site ... and with USU, Weber State, Utah and BYU possible entrants ... tickets would be a scarce item.

It won't be too long until a decision is reached, and if USU is by-passed in the selections, it'll be difficult to stamp approval on any other playoff site.

MORE SPECULATION: It's apparent that Jeff Tebbs has been thrown off stride by his untimely eye injury and USU is searching for a floor-general. Terry Wakefield, to be sure, is a fine shooter, defensive performer and can operate well on the fast break.

But Wakefield doesn't have the floor-leading knack that Tebbs provided. Ed Epps, despite some outstanding clutch play at Air Force, New Mexico State, Seattle and Denver, has really not been given the chance to take the offensive reigns.

Epps, who averaged more than 13 points per game as a

sophomore, and who (statistics will bear this out) has been one of the best performers under pressure -- has wilted on the bench this year. It seems Ed fell into disfavor with someone along the line and is being punished with spot-game time.

But it has been noticeable as late that Epps has been the spark in the Aggie offense ... despite short and brief periods of playing time.

Someone said "it seems like the only time they use Epps is when they're desperate." And if Epps qualifies as a dangerous move, Utah State must have the best team in the country. A player the caliber of Epps should be flaunted and flirited.. not hidden or concealed.

Sojourner--Bees

The story goes that Weber State's wondrous Willie Sojourner can't wait to take the court against USU next Tuesday. Two years ago as the Weber

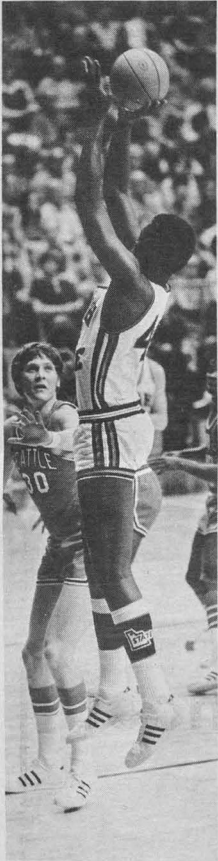
team bumped into USU players at the Salt Lake airport, Sojourner made some boastful comments about the coming game.

Sojourner, who has been far below All-American caliber in the past two months, claimed that playing against Walter Bees would be a picnic. (At the time of comment, Bees was tearing up the frosh foes for Dutch Belnap.)

Well, Bees may or may not get a chance to play against Sojourner, but most would doubt that Weber's center will have too much of a picnic.

WSC has labeled the USU game "our game of the year," despite its title-race in the Big Sky Conference. Utah State, it now develops, needs a win badly to impress post-season tournament selectors.

But one thing's for sure. Sojourner may end up eating more than he plans to dish out. Roberts, Williams, Bees, Hatch and the guys should see to that!



Wally Bees
Made Giant Stride

U.S.U. COFFEE HOUSE presents



Folk music by

CAMP HILL

Direct from Denver

Tues., Feb. 23

After the Game

Wed., Feb. 24

9:00 p.m. in the Briar

FREE

which ain't expensive

Turn
on to
Poems
and
Songs
at

The Main
Event Coffeehouse
111 So. Main

Ag matmen eye two home meets

Reporting:

B. Palmer Hislop
Sports Writer

Utah State's wrestling brigade, home after a road trip to California with a stop in Reno, will meet Southern Utah State Friday night at 7:30 and the Air Force Academy Saturday night at 7:30. Both matches will take

place in the new Assembly Center.

The Aggies clobbered Nevada, 33-10 to gain their fourth dual win of the year. Theon Merrill, Mike Phillips, Wayne Miner, and Bob Clements pinned their opponents, and Ken Coleman, Gus Lindley and Doug Christensen also won their matches to pace the winners.

But the journey to the coast

wasn't quite as successful as the Utags lost to Chico St., 21-9, and San Francisco State, 21-8. Greg Brimhall and Wayne Miner were victorious in the Golden Gate City, while Miner, Gus Lindley and Bob Clements won against Chico.

This week-end action will be the last dual meets for the Aggies this year, as they will look forward to the upcoming regionals on March 5th and 6th.

Coach Carlson may come up with a few surprises at the regionals, as there is talk in the Aggie lair about some of his wrestlers dropping a full weight class. 126 pound Ken Coleman will not compete this week due to a clavicle separation.

Starting Lineups
118 Greg Brimhall
126 Doug Gemin

134 Gus Lindley
142 Sam Bessinger
150 Theon Merrill
158 Doug Christensen
167 Wayne Miner
177 Bob Clements
190 Jim Johnson
hwt. Lou Leyba

BISTRO

Friday Afternoon

Rusty & Sally
will dance

Friday & Saturday

"Sound Advice"
NO COVER

SLOW IN SCHOOL?
LOOK TO
GOD!

A girls ability to reason was lacking Through the application of Christain Science her score literally went from Zero to near 100% in her school work

9:30 KUNU 610 KC
10:30 KWHO 860 KC

the TRUTH
that HEALS

Defunct fraternity wins share of bowling title

Delta Sigma Phi, now defunct on the USU campus, rallied for an amazing three-pin bowling victory over Sigma Alpha Epsilon last week to highlight the climax of the fraternity bowling playoffs.

The Delta Sigs lost the first two games to the SAE's but defeated them by 65 pins in the final game to win total points, 1950 to 1947. The victory threw the fraternity division into a tie -- both the SAE's and DSP's had one loss. Fred Behm had a 221 in the third game to highlight the comeback, although Doug Dermit of SAE had the high individual series, a 528.

In recent intramural basketball, MASH of the club league recorded three big triumphs to advance to the semi-finals.

MASH nipped the Controllers 43-42, topped the Ichi Bans 50-37 and defeated Newman Center 35-26 to gain future action.

Joe's Boys, the Canadians and MASH are now playing for the title of the club league.

In Dorm Action, High Rise 4 looms as the team to beat with an unbeaten record. However, Richards Hall, High Rise 6 and High Rise 7 are still alive in the chase.

In fraternity play, Pi Kappa Alpha, perhaps the strongest intramural team on campus, will play last night's winner of the Sigma Chi-Sigma Gamma Chi game for the title. The Pi Kaps are unbeaten and heavy favorites to win the championship.

HAPPY BIRTHDAY
VURVE

INTERNATIONAL BENEFIT CONCERT F.A.C. THEATRE

Saturday, Feb. 20 - 8:00 p.m.

Admission: \$1.50 or \$1.00 with activity card

Tickets can be purchased at U.C. Ticket Office

& Foreign Student Office - Main 29

ALL proceeds go toward the George A. Meyer Loan Fund

SENIORS

Apply Now For Graduate School

(Main 130)

Before Registering

For



SUMMER QUARTER

Plans set for class

Black music will be offered here spring quarter if enough people are interested, according to Del Faddis, program coordinator, Conference and Institute Division.

The course will be taught Wednesday, 7 p.m., in the Chase FAC by Larry Smith, assistant professor of music theory.

"Basically, this is a survey course of the Black people's music," Smith said. "It is designed to develop appreciation and understanding. It will give the Black students an idea of the heritage they have in music."

"The person who is not Black will get an idea of the different facets of Black music, where they have come from and the great extent to which this music has been absorbed into the American culture."

Planned Course

Smith plans to use recorded material he has collected for use in such a course in showing students how the music has developed and what elements of African music have been preserved through the centuries.

Students will start by listening to African music and go through the 18th-19th centuries to present day with spirituals, jazz, soul and rock music.

There is a course fee and persons interested in the class should contact the USU Conference and Institute Office in person.

Aul-O-Hawaii — A meeting will be held on Sunday in the UC third floor lounge. Plans for a spring luau will be discussed. All members should attend.

Mother's Weekend — All women interested in working on Mother's Weekend should apply at the activity center by Wednesday.

Civil Liberties — Frank Wilkensen will speak today in the UC lounge on what concerned Utah State students and faculty can do about bills which deprive American citizens of their Constitutional rights. Wilkensen is on tour for the National Committee against Repressive Legislation.

Religion in Life — The series will host Hack Miller, sports editor for the *Deseret News*. This will be Tuesday, 12:30 p.m., in the East Chapel of the LDS Institute.

Cache East Stake — M-Men and Gleaners are invited to at-

tend "Eternal Values" night, Sunday, 8:30 at the 5th-18th ward.

Outing Club — Ski trip to Jackson. If interested contact Earl at 752-4542 by next Friday.

Readers Theatre — Tryouts for the theatre productions about D.H. Lawrence will be held today in Main 244 from 2 till 5 p.m.

Lambda Delta Sigma — Masquerade Ball will be held tomorrow at 8:00 p.m. in the Sky Room of the UC.

Earth People — There will be a work day Saturday at 10:30 a.m. in the Albertson's parking lot.

Campus Crusade for Christ — Meeting Tuesday evening at 8:00. For information call 753-1682.

Panel on Sexuality — A panel of doctors will discuss "Sexuality and the Human Community" Sunday, February 21 at 7:30 p.m. Meeting is open to all interested and questions will be answered.

Concert — USU Symphony will present its annual Concerto program Sunday in the Chase FAC concert hall. There is no admission charge and the public is invited.

Indian Students — Buzzer picture will be taken Thursday in the Sunburst lounge at 7:00 p.m. All members are requested to be present.

CINEMA

2nd
Big Week

WALT DISNEY
PRODUCTIONS



THE WILD COUNTRY

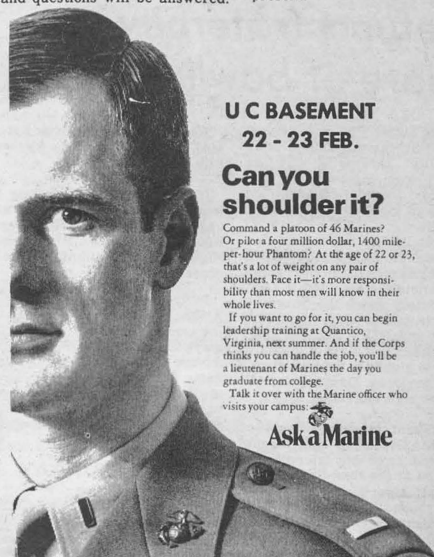
Wild Country at 6:25-9:50
Sat.-Sun. 3:25-6:25-9:50

Regina's Screen Theatre

Spend an unforgettable
SEMESTER AT SEA
on the former
QUEEN ELIZABETH



New lower rates; full credit for courses. Write today for details from World Campus Afloat, Chapman College, Box CCI6, Orange, CA 92666



**U C BASEMENT
22 - 23 FEB.**

**Can you
shoulder it?**

Command a platoon of 46 Marines? Or pilot a four million dollar, 1400 mile-per-hour Phantom? At the age of 22 or 23, that's a lot of weight on any pair of shoulders. Face it—it's more responsibility than most men will know in their whole lives.

If you want to go for it, you can begin leadership training at Quantico, Virginia, next summer. And if the Corps thinks you can handle the job, you'll be a lieutenant of Marines the day you graduate from college.

Talk it over with the Marine officer who visits your campus.

Ask a Marine

Big Blue Days

in the

Field House for the Weber State Game

Tuesday, February 23

★ 4:45 Village Voices

★ 5:15 Prep Rally

★ Big Blue Contest for the guy

and gal with the most blue on.

Mr. Blue gets \$15.00

Miss Blue gets \$15.00

(contest held between Frosh and Varsity game)

★ The Student section with the most Blue banners. and badges will receive the basketball & candy.