

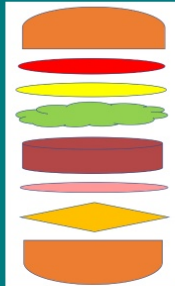
A Landslide of Emotion

A musical analysis of Queen's "Bohemian Rhapsody"

Abby Lee, Kienna Parkin, Megan Chesley, and Addie Spencer

Queen's Bohemian Rhapsody has multiple sections

- Bun- Intro
- Ketchup- Verse 1
- Mustard- Verse 2
- Lettuce- Guitar Interlude
- Patty- Operatic Section
- Fry Sauce- Verse 3
- Cheese- Instrumental Interlude
- Bun- Outro



Have you ever heard of a crazy little band called.. QUEEN??



Or eaten a BURGER??

"Rhap"-Up Thoughts

Summary:

- Songs can use musical form to help tell a story or portray emotion
- ANYONE (yes you) can apply elements of musical form within songwriting and listening to your favorite songs

Questions for you:

1. How can this understanding apply to other popular songs in regards to form?
2. Do you think this form was structured intentionally or not?



<https://open.spotify.com/track/6i8GvAyoUzWWDgEie4822w?si=j7NLovASSnaDjdQgyoWA1A>



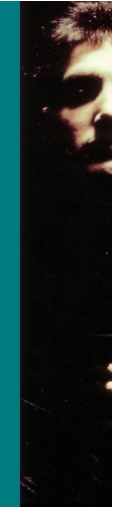
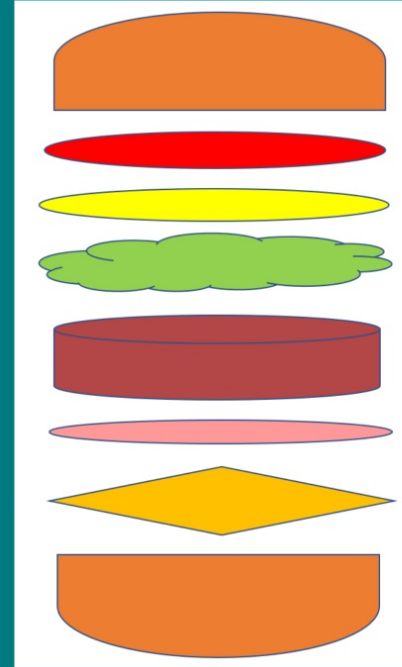
Have you ever heard of a crazy little band called.. QUEEN??



Or eaten a BURGER??

Queen's Bohemian Rhapsody has multiple sections

- Bun- Intro
- Ketchup- Verse 1
- Mustard- Verse 2
- Lettuce- Guitar Interlude
- Patty- Operatic Section
- Fry Sauce- Verse 3
- Cheese- Instrumental Interlude
- Bun- Outro



Have
little

Buns

- The buns represent the intro and outro of the piece
- They contain similar themes in their lyrics and emotions portrayed including existentialism, wonderment, and self-actualization
- The style of both sections is also similar, creating nice 'bookends' or 'buns' for the piece.



Sauces: The verses!

- Ketchup: Verse 1 (Mama, just killed a man... introducing the story, Piano ballad, exploring)
- Mustard: Verse 2 (Too late my time as come... Story continues, Longing)
- Fry Sauce: Verse 3 (So you think you can take me... powerful beat with drums emphasizes lyrics - resolve to fight back feels more positive than before repeating drum & guitar line guitar mf - sounds determined)



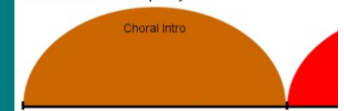
Patty

- The patty represents the operatic section
- This section is a dramatic change to the rest of the song
- The changes include:
 - additional voices, chorus-like
 - call and response between solo voice, chorus, and instruments
 - shift between loud and soft phrases
- These changes add to the feeling of awe and confusion the singer is experiencing

Other Toppings

- The lettuce and the cheese both represent instrumental interludes
- They contain similar notes and styles
- They are however, different in the sense that the lettuce is a guitar interlude and the cheese is more of an instrumental interlude including drums, piano, and guitar.

Queen Bohemian Rhapsody



Buns

- The buns represent the intro and outro of the piece
- They contain similar themes in their lyrics and emotions portrayed including, existentialism, wonderment, and self-actualization.
- The style of both sections is also similar, creating nice "bookends" or "buns" for the piece.



Sau

- K
k
s
- N
t
L
- F
y
w
r
p
o
s



Sauces: The verses!!

- Ketchup: Verse 1 ("Mama, just killed a man)-- Introducing the story. Piano ballad. Imploring
- Mustard: Verse 2 ("Too late my time as come")-- Story continues. Longing
- Fry Sauce: Verse 3 ("So you think you can stone me") powerful beat with drums emphasis, lyrics - resolve to fight back feels more positive than before repeating drum & guitar line guitar riff - sounds determined



Pat

-
-
-
-



Patty

- The patty represents the operatic section
- This section is a dramatic change to the rest of the song
- The changes include:
 - additional voices, chorus-like
 - call and response between solo voice, chorus, and instruments
 - shift between loud and soft phrases
- These changes add to the feeling of anxiety and confusion the singer is experiencing

Oth

-
-
-

Other Toppings

- The lettuce and the cheese both represent instrumental interludes.
- They contain similar notes and styles.
- They are, however, different in the sense that the lettuce is a guitar interlude and the cheese is more of an instrumental interlude including drums, piano, and guitar.

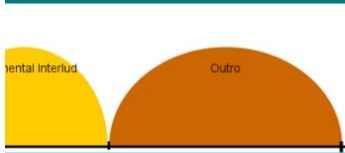
"Rhap"-Up Thoughts

Summary:

- Songs can use musical form to help tell a story or portray emotion
- ANYONE (yes you) can apply elements of musical form within songwriting and listening to your favorite songs

Questions for you:

1. How can this understanding apply to other popular songs in regards to form?
2. Do you think this form was structured intentionally or not?



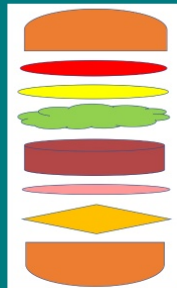
A Landslide of Emotion

A musical analysis of Queen's "Bohemian Rhapsody"

Abby Lee, Kienna Parkin, Megan Chesley, and Addie Spencer

Queen's Bohemian Rhapsody has multiple sections

- Bun- Intro
- Ketchup- Verse 1
- Mustard- Verse 2
- Lettuce- Guitar Interlude
- Patty- Operatic Section
- Fry Sauce- Verse 3
- Cheese- Instrumental Interlude
- Bun- Outro



Have you ever heard of a crazy little band called.. QUEEN??



Or eaten a BURGER??

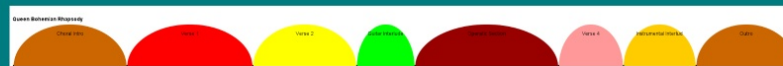
"Rhap"-Up Thoughts

Summary:

- Songs can use musical form to help tell a story or portray emotion
- ANYONE (yes you) can apply elements of musical form within songwriting and listening to your favorite songs

Questions for you:

1. How can this understanding apply to other popular songs in regards to form?
2. Do you think this form was structured intentionally or not?

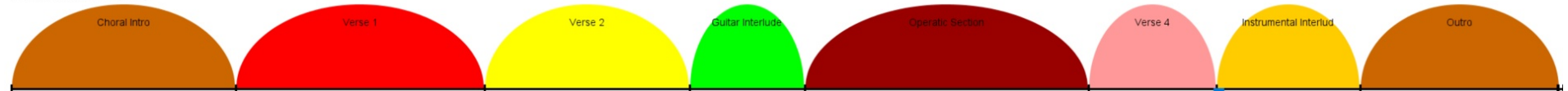


<https://open.spotify.com/track/6i8GvAyoUJzWWDgEie4822w?si=j7NLovASSnaDjdQgyoWA1A>

Have you ever heard of a crazy little band called.. QUEEN??

Or eaten a BURGER??

Queen Bohemian Rhapsody



<https://open.spotify.com/track/6l8GvAyoUZwWDgF1e4822w?si=j7NLovASSnaDjdOgyoWA1A>