

Utah State University

DigitalCommons@USU

The Utah Statesman

Students

1-2-1984

The Utah Statesman, January 2, 1984

Utah State University

Follow this and additional works at: <https://digitalcommons.usu.edu/newspapers>

Recommended Citation

Utah State University, "The Utah Statesman, January 2, 1984" (1984). *The Utah Statesman*. 1490.
<https://digitalcommons.usu.edu/newspapers/1490>

This Book is brought to you for free and open access by the Students at DigitalCommons@USU. It has been accepted for inclusion in The Utah Statesman by an authorized administrator of DigitalCommons@USU. For more information, please contact digitalcommons@usu.edu.



Inside:

Inside:

Inside:

Inside:

Complete class listing of altered classes in this issue.

Old Main fire necessitates relocations

**SPECIAL
ISSUE**

The Statesman



Historic Old Main
damaged due to fire

Crews from Logan City, Smithfield, Hyrum and Cache County battled the December 19 fire in Old Main's north wing. As a result, many classes and offices have been forced to relocate. This special issue of *The Utah Statesman* will help you understand the relocation changes.

Student Center feels brunt of Old Main fire

The Dec. 19 fire in Old Main's north wing not only destroyed a good deal of USU's flagship building, it necessitated the relocation of a number of student services and office space to the Taggart Student Center.

Gary Chambers, director of the SC, said several student services are now occupying space there. Admissions and Records (including the Graduation office and Veteran Services) have been located in the Juniper and University Lounges (TSC 225).

Academic Services now occupies Rooms 333 and 335 in the SC, Chambers said, and the International Students' organization has established residence in Room 329.

The occupation of lounge and study space by these student services made it necessary to allocate extra space in the SC in order to compensate for this loss, Chambers said.

"We had five rooms full of furniture to relocate after we moved Admissions and Records into the Juniper Lounge," he said, "so we've taken out the activity board on the third floor and moved a lot of the furniture up there in order to replace some of the lost study space." There have also been a number of seats added to the SC's Ballroom Lounge in order to allow for needed study space, Chambers added.

Chambers said all of the moving and reshuffling of space in the building has decreased the amount of conference rooms available for use by students and faculty. "The loss of this space (conference rooms) is our main concern, but we're planning on relocating to conference rooms in the (University) Residence Center and the Eccles Conference Center without much problem."

As to the length of time the services will be

located in the SC, Chambers said he really has no firm idea.

"I really haven't heard anything for sure," he said. "I've heard some people say it could be done within six months, but I think that's a little too optimistic. My own personal opinion is that it could take up to one year to get Old Main restored, but that is just my own estimation."

The money figures on the relocation aren't in yet either, Chambers said.

"I have no figures at all, however, I think the insurance would cover the total costs of temporary relocation."

"We're really very happy that we were able to accommodate the student services," Chambers said. "We're confident that we can make this a positive experience for everyone involved."

All classes to be held; new campus locations listed

Even as the flames licked and the smoke curled around the belfry of Old Main, President Stanford Cazier vowed that school would begin on time and classes displaced by the fire would be held.

Through the efforts of the scheduling office in Admissions and Records and the cooperation of numerous departments on campus, that presidential promise has come to pass.

Sixty-nine classes displaced by the fire have been relocated, some just to a different room in Old Main, others to such unfamiliar places as the Exceptional Child Center, Industrial Science Building and the Technology Building.

Language and geography classes were the

hardest hit and the most likely to have had their location altered. (See charts, previous page.)

According to Joan Hansen, senior secretary, Admissions and Records, judging from pre-registration figures "most of the new rooms should be big enough to accommodate the changes," barring a large number of registrants for the relocated class.

She said many of the new locations for classes were labs in buildings around campus that could be altered for classroom use.

In addition to classrooms, many department offices and student services previously located in Old Main have been moved temporarily. Most significantly, the Admissions and Records office is now located in the Juniper Lounge.

However, registration will still be held in the Nelson Recreation Center (Fieldhouse) as in recent quarters and late registration is to be held in the SC Ballroom as it has been recently.

Major departmental relocations include:

- languages and philosophy, nine offices now in the university president's recently-vacated home, near Old Main.

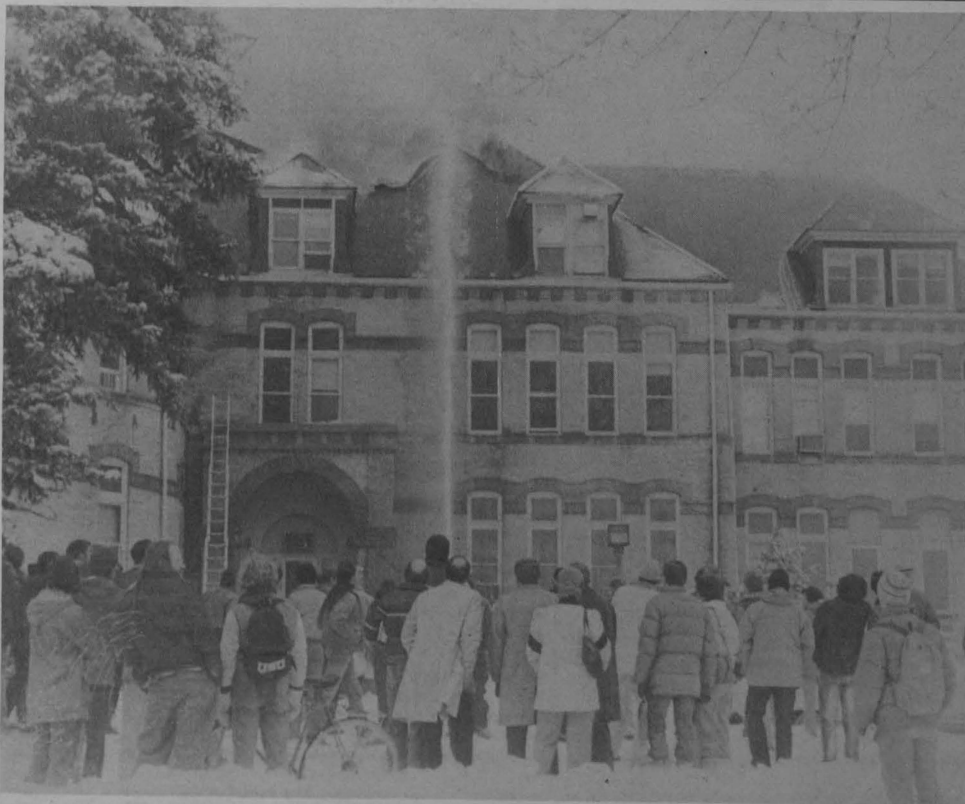
- intensive English, eight offices and classrooms are located presently in Natural Resources and Biology Room 227.

- geography department is now found in Main 311, just south of its former location.

Wednesday's Statesman

will have the complete story on the Old Main fire

... along with all the sports you missed while away, entertainment, campus news and a special 'fire sale' on personals. Watch for it!



What's where (and where is that?)

Here's where
displaced classes
are now found

INDEX CLASS

NEW ROOM

1188 - Soils 780-01 - Ag S 302
1197 - Bimet 680-01 - Ag S 302
1184 - Soils 680-01 - Ag S 302
1200 - Bimet 780-01 - Ag S 302
1561 - Pep 301-01 - Pe 114
1596 - Rep 551-01 - Exec 151

1099 - Nfs 106-01 - Nfs 201
3260 - Chem 124-E - Ed 306
3254 - Chem 124-B - Ms 202
2825 - Soc 462-01 - Nr 105
2860 - Anthr 355-01 - M 43 - MWF 10:30
1777 - Psy 173-05 - M 43
2778 - Pol Sc 205-01 - Nr 105
2779 - Pol Sc 211-01 - Nr 105
2793 - Pol Sc 589-03 - Nr 105
2798 - Pol Sc 611-01 - M 338
2780 - Pol Sc 211-A - Nr 105
2792 - Pol Sc 589-01 - Nr 105
2781 - Pol Sc 319-01 - M 340
2774 - Pol Sc 110-07 - Pe 118
2606 - L Es1 251-01 - Nr 4
2611 - L Es1 256-01 - Nr 4
2580 - L Ch 101-01 - M 251
2581 - L Ch 102-01 - L 313
2648 - L Sp 202-01 - SC
2584 - L Ch 202-01 - M 313
2652 - L Sp 423-01 - L 408

2650 - L Sp 305-03 - M 338
2663 - Phil 380-01 - M 251
2664 - Phil 380-03 - M 251
2632 - L Gr 501-01 - Ms 204
2618 - L Fr 202-01 - Nr 4
2622 - L Gr 101-01 - Nr 4
2645 - L Sp 102-01 - Ag S 315
2620 - L Fr 307-01 - Ed 306
2627 - L Gr 202-01 - P 202
2628 - L Gr 211-01 - P 202
2646 - L Sp 102-03 - Nr 206
2613 - L Fr 101-03 - Pe 116
2647 - L Sp 103-01 - Nfs 202

2646 - L Sp 102-03 - Nr 206
2613 - L Fr 101-03 - Pe 116
2621 - L Fr 461-01 - L 220
2623 - L Sp 425-01 - Ed 112
2671 - L Fr 101-01 - Pe 116
2617 - L Fr 201-01 - Vsb 130
2626 - L Gr 103-01 - P 202
2651 - L Sp 361-01 - P 202

2636 - L Lin 519-01 - P 202
2614 - L Fr 102-01 - M 251
2643 - L Sp 101-03 - An Sc 115
2629 - L Gr 305-01 - Is 113
2630 - L Fr 311-01 - Is 113
2616 - L Fr 103-01 - Ms 201
2649 - L Sp 305-01 - Ms 201
2673 - L It 103-01 - Fa 228
2654 - L Sp 503-01 - Fa 228
2655 - L Sp 503-01 - M 253
2624 - L Gr 102-01 - M 253
2623 - L Gr 101-03 - M 253
2666 - L Jp 101-01 - M 251
2667 - L Gr 102-03 - M 253
2625 - L Sp 101-01 - Ag S 338
2642 - L Sp 101-01 - Nr 314
2612 - L Fr 101-01 - T 122
2619 - L Fr 305-01 - F1 115
2633 - L Gr 503-01 - F1 115
2631 - L Gr 461-01 - Ms 201
2583 - L Ch 201-01 - M 338
2615 - L Fr 102-03 - Ag S 202

Where evacuees are located. . .

Admissions, Registration, Scheduling. . . SC Juniper Lounge
Records, Graduation, Veterans Affairs. . .
SC University Lounge (behind SC Theater)
International Student Office. . . SC 329
Academic Services. . . SC 335, 333



Language and Philosophy. . . President's Home
Intensive English. . . NRB 227
Geography Office. . . Main 311
Testing Office. . . Main 13, 13D
VP of University Relations. . . Main 128
Government Relations. . . Main 116

Building Designations

AA	Athletics Annex	LSLCC	Life Span Learning
AG ED	Agricultural Education		Conference Center (Eccles)
AG S	Peterson Agricultural		Lund Hall (CASS)
	Science	LUND	Main
AG VII	Aggie Village (Married Student Housing)	M	Mechanical Arts
AH	Alumni House	MA	Metabolism
AM	Art Museum	METAB	Maeser Chemistry Laboratory
AN SC	Animal Science	MP	Motor Pool
APL	Animal Physiology Lab	MS	Military Science
ASL	Art Sculpture Lab	MVT	Mountain View Tower
AUXS	Auxiliary Services	NFS	Nutrition and Food Sciences
B	Business	NR	Natural Resources
BARN	The Barn	NRB	Natural Resources-Biology
CHLDS	Children's House	NRECA	Natural Resources-Ecology Center Annex
HSE	Crops Research Laboratory	P	Plant Science
CRL	Computer Center	PHYPL	Physical Plant and Maintenance
CC	Engineering Annex	PSVAL	Psychology Lab
EA	Edith Bowen School	RC	Nelson Recreation Center
EB	Engineering Class	RIC	Richards Hall
EC	Engineering Class	RTV	Radio and TV Building
ECOB	East Campus Office Building	SC	Student Center
ED	Education	SPEC	Spectrum
EL	Engineering Laboratory	STORE	Receiving/Stores
EXCC	Exceptional Child Center	T	Technology
FA	Fine Arts Center	TG	Temporary Building
FAV	Fine Arts Visual	TS	Technical Service
FL	Family Life	UNREL	University Relations
FLEL	Family Life/Education Link	UR	University Reserve
FORSCI	Forestry Sciences Laboratory	URC	University Residence Center
GH	Greenhouse	USLC	University Student Living Center
GHPPL	Poisonous Plant Greenhouse		Utah Water Research Laboratory
HAC	Harris Athletic Center	VNS	Vending Services
HMH	Home Management House	VSB	Veterinary Sciences and Bacteriology
HP	Heating Plant	VVT	Valley View Tower
PE	Health, Physical Education and Recreation	W	Widstoe Hall (Chem)
HO	Housing Office		
IS	Industrial Science		
JP	Judging Pavillions		
JNCTN	Junction (Dorm Cafeteria)		
L	Library		

Road around Main closed

Other changes brought about by the fire:

•Students should avoid turning south on 800 East unless they have business at the LDS Institute, sororities located there, or plan to turn onto Darwin Avenue. While construction goes on, the road in front of Old Main will be closed from in front of Widstoe Hall to a point between Old Main and Mechanical Arts. The wise motorist will avoid the difficult turnaround.

•The north entrance to Old Main will be closed to foot traffic. Those needing to enter the building should plan to do so through the south or east entrance.

•No student or staff parking lots are affected by the changes. The visitor parking area by Old Main will be closed.

•In nearly all cases, offices — although relocated — will have the same telephone numbers as shown in the campus directory. For any special assistance, call the campus operator.

CATCH A FEW Z'S

ON THE NEW



ANNOUNCING IN COOPERATION WITH ASUSU AND SPECTRUM PRODUCTIONS A NEW RADIO STATION IN LOGAN. PLAYS HIGH-ENERGY ROCK AND ROLL. MONDAY AT 6:FM

WAKE UP LOGAN!



DOMINO'S PIZZA DELIVERS™ FREE.

\$1.00 Off!

\$1.00 off any size 2-item or more pizza. One coupon per pizza. Expires: 1/15/84

Fast, Free Delivery™
753-8770
1151 N. Main



\$2.00 Off!

\$2.00 off any 16" 2-item or more pizza. One coupon per pizza. Expires: 1/15/84

Fast, Free Delivery™
753-8770
1151 N. Main



30 minute guarantee

If your pizza does not arrive within 30 minutes, present this coupon to the driver for \$2.00 off your order. One coupon per pizza. Expires: 1/15/84

Fast, Free Delivery™
753-8770
1151 N. Main



Our drivers carry less than \$20.00.
Limited delivery area.
©1983 Domino's Pizza, Inc.