

Patterns in Library Use in College Students

Background

This project researches how and what college students use a library for. The purpose behind this research was to design a floor plan, as well as space planning, a library that would function best for students, and create a plan that can help students of all backgrounds.

The research was conducted to better understand what students are looking for in a library and what might make them use the space more to their advantage.

To correctly portray this research a two-floor library was drawn up from scratch with the most requested features collected through surveys and research.

A university library is more than a collection of books and information. It is an interactive multimedia center designed to support learning and coming together of multiple disciplines.

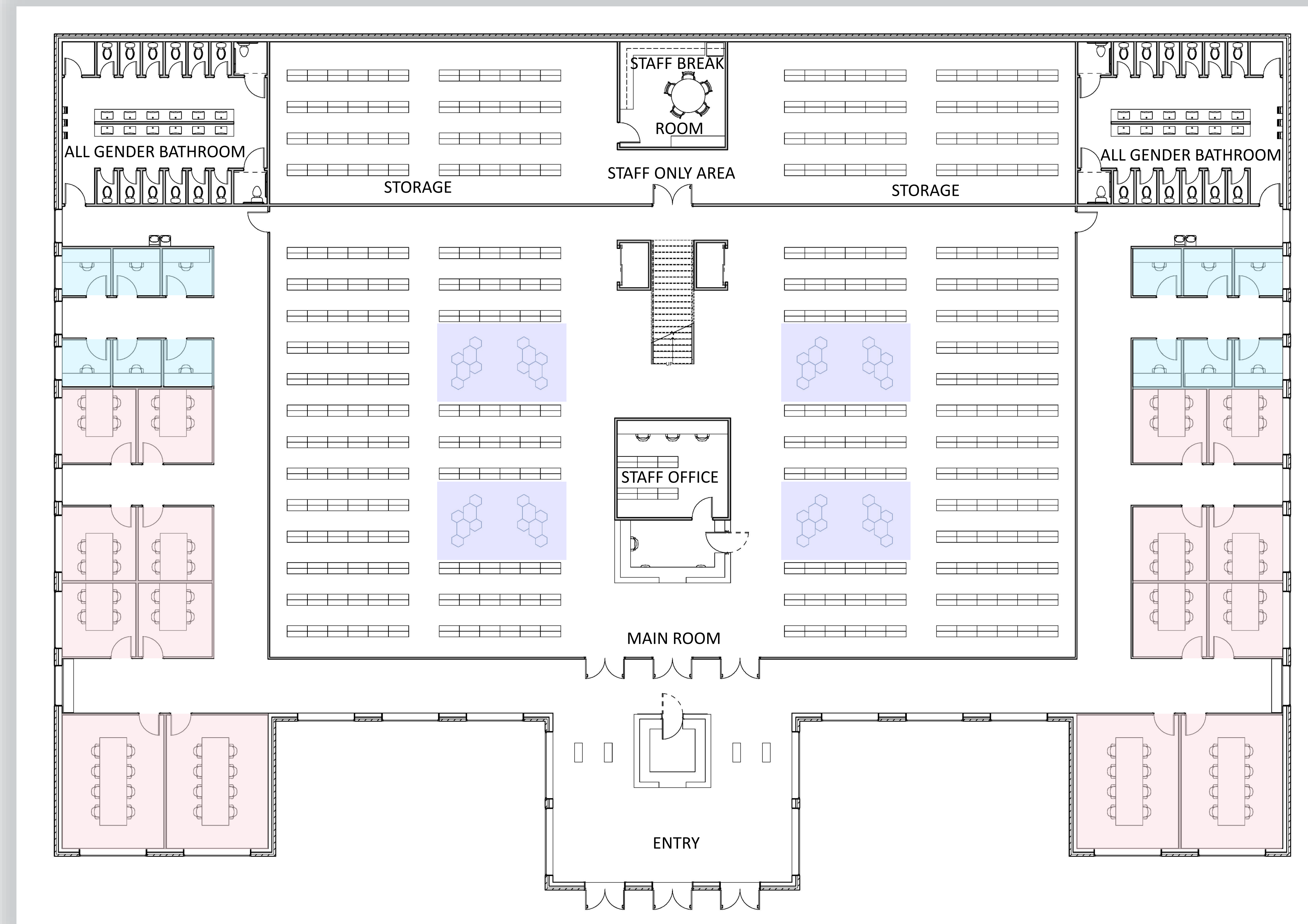
Methods

This study summarizes the key aspects of library design and how it can be extremely useful to students of all backgrounds during their time at the university. Some of these key aspects include comfort and aesthetics, compartmentalization, organization, shelving, and furniture, internet connectivity, lighting, and design for accessibility.

Through talking with college students, the cohesive floor plans came together representing key elements students would like to see and best work in their patterns of usage not what an architect or interior designer might think.

Extra results

Great attention to detail is that this library is designed so the library portion with all the books can be closed at an earlier time than the group and individual study rooms. Many students identify as being night people and they get the most done at this time so having this feature allows students to stay in the library longer than usual.

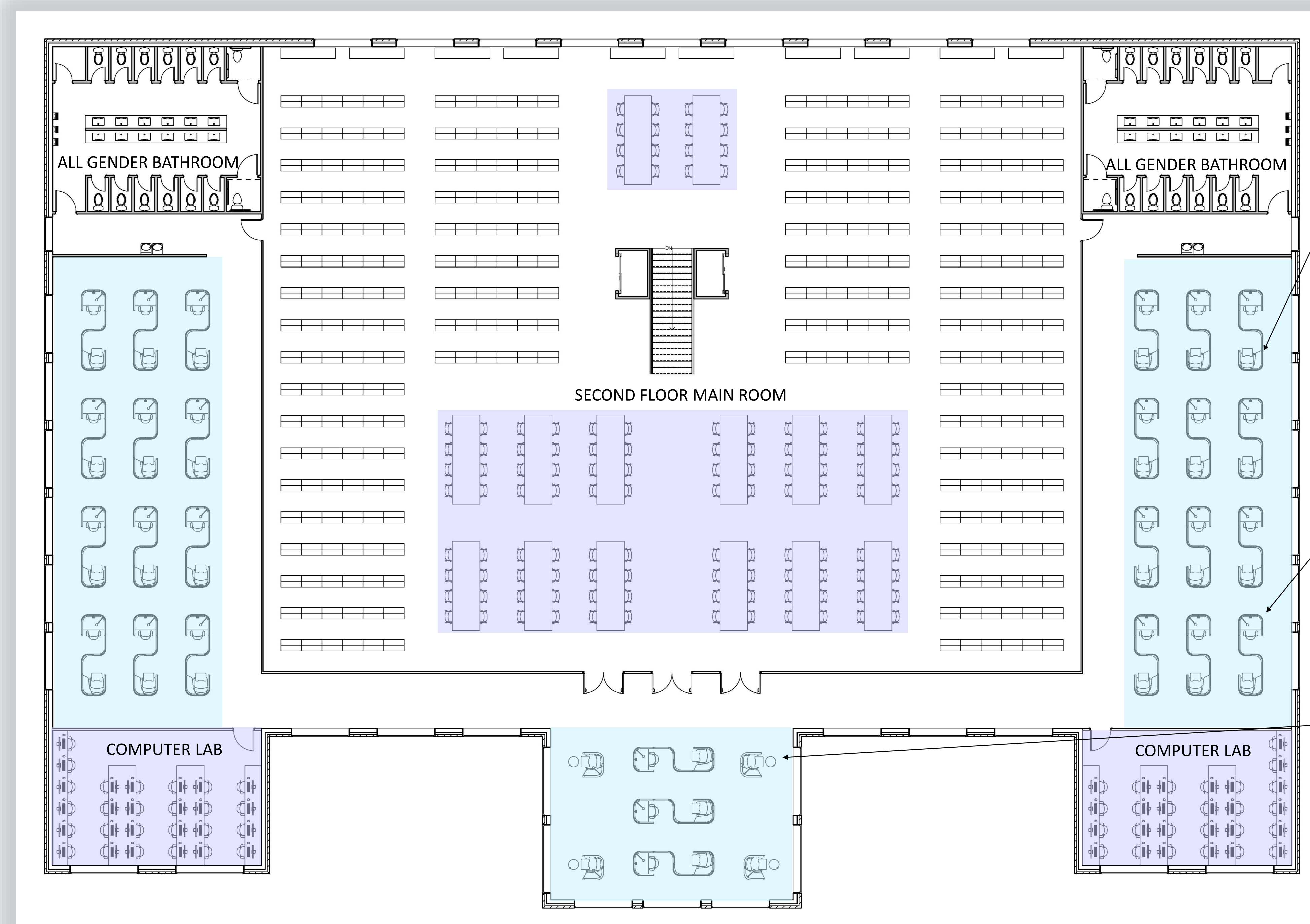


Areas highlighted in a light pink show they are ideal for group studying.

Areas highlighted in a light blue show they are ideal for individual study time.

Areas highlighted in a light purple show they are ideal for either group or individual study.

Brody System by Steelcase



Work Cited

- "Design Process." *BCI Libraries*, 25 May 2021, <https://bcilibraries.com/design-process/>.
- Fry, Natalie. "New Research Reveals That College Students Study Best Later in the Day." *University of Nevada, Reno*, University of Nevada, Reno, 11 Apr. 2017, <https://www.unr.edu/nevada-today/news/2017/best-time-of-day-to-study>.
- "Important Considerations in Library Design." *School Construction News*, 30 Nov. -1, <https://schoolconstructionnews.com/2015/07/07/important-considerations-in-library-design/>.
- Jameson, Jodi, et al. "Evolving and Enduring Patterns Surrounding Student Usage and Perceptions of Academic Library Reference Services." *College & Research Libraries*, <https://crl.acrl.org/index.php/crl/article/view/17116/19516>.
- "Libraries Are for Studying." *Gensler*, 1 Sept. 2015, <https://www.gensler.com/gri/students-on-libraries>.



Utah State University

Gabrielle Nye | Utah State University
Susie Tibbitts | Utah State University

