

Recidivism rates in the USA (5 yrs.) 75% v. Norway at 20%.

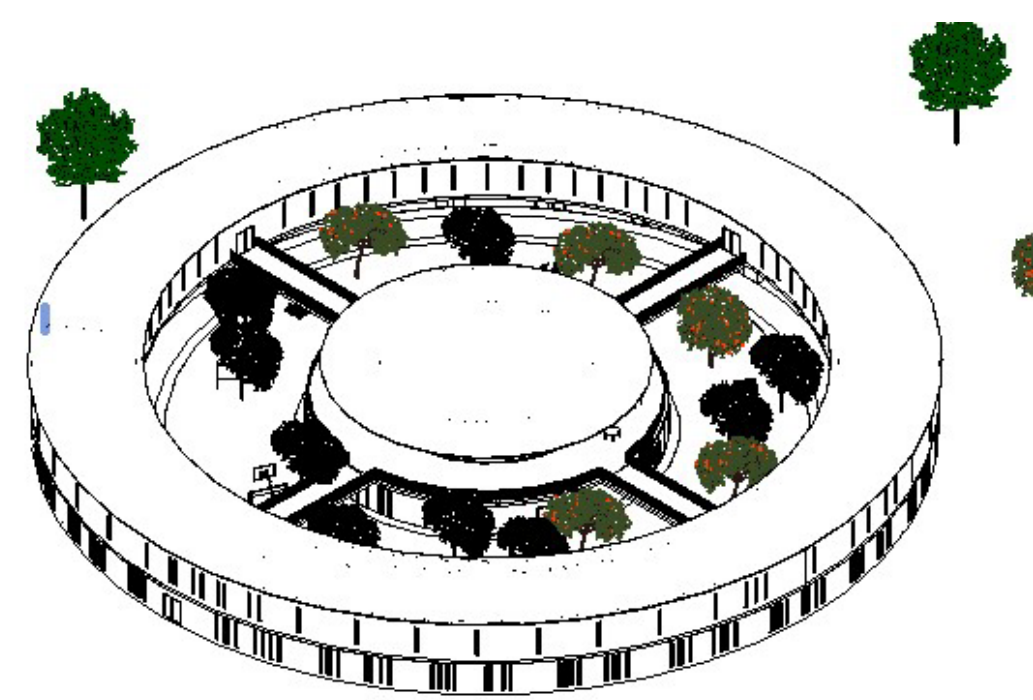


Savannah Horton
Utah State University

Interior Architecture and Design
Utah State University

Introduction

“Design Impacts Lives” is a fundamental in design. Hospitals, Grocery Store, Library's and so on are intentionally designed to serve a purpose. However, Jails are not designed to be “correctional facilities” but instead places of punishment. I have designed a Prison that focuses on Rehabilitation based on design principles and dignifying design.



Methods

Research on design principles and their effect on human behavior.

Precedent Studies on Nordic Prison which have the lowest recidivism rate

Interviews with professionals in healthcare/rehabilitation centers on the design decision of their environment.

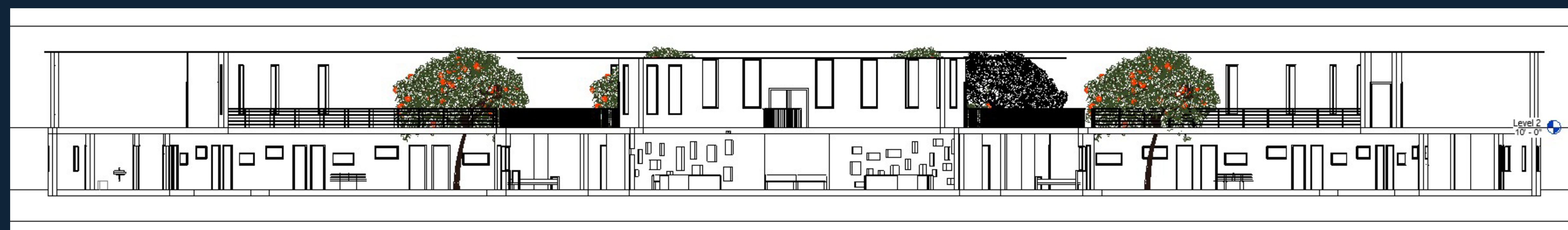
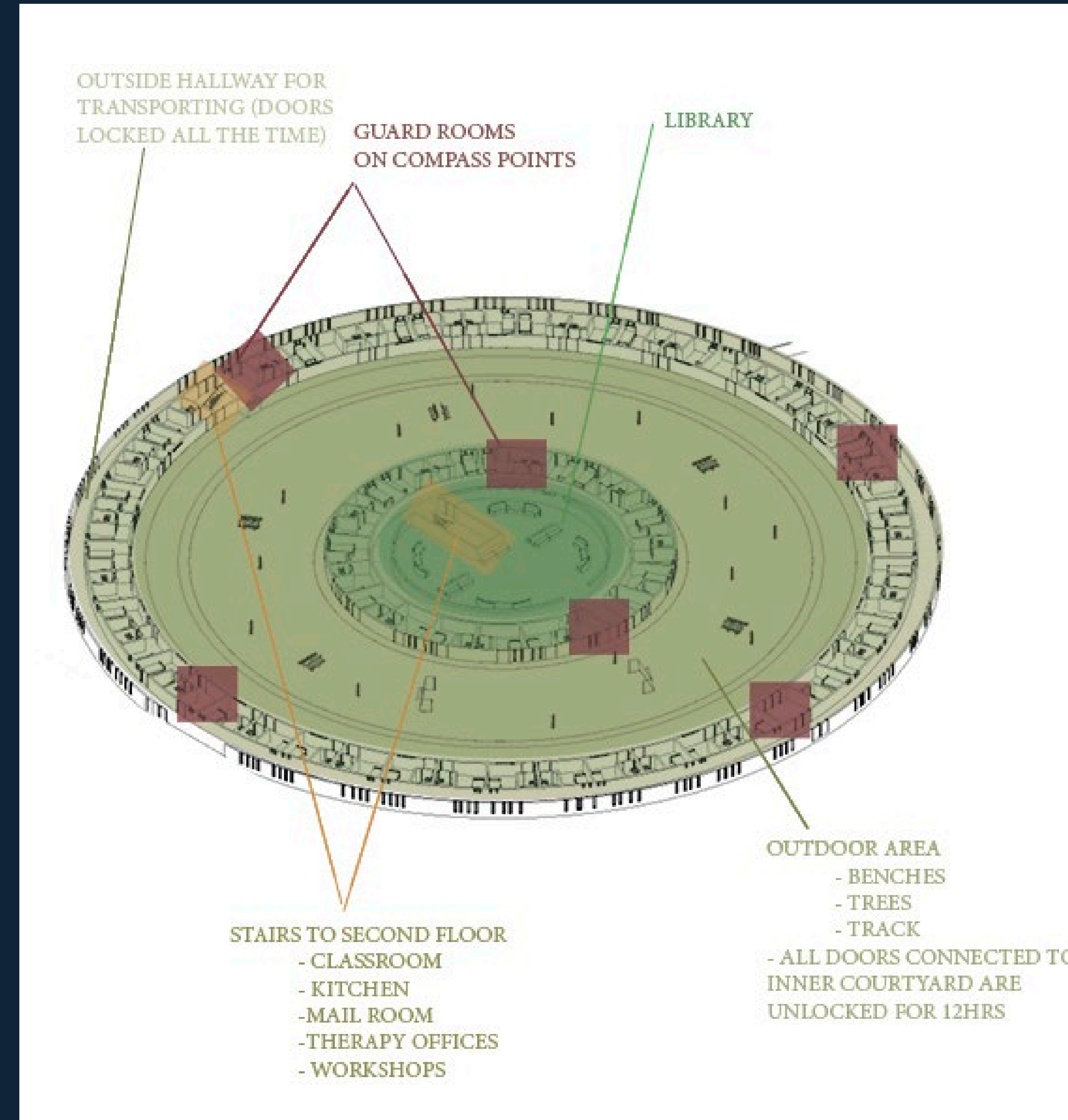
Podcast/Media research on Prison Life and including interviews from prisoners

Rehabilitation Center

“Beauty has a civilizing influence”

- Yvonne Jewkes

Professor of Criminology
at the UK's University of Kent



Images of “Rehabilitation Center” designed by Savannah Horton

Result

Color Theory: blues – lower heart rate

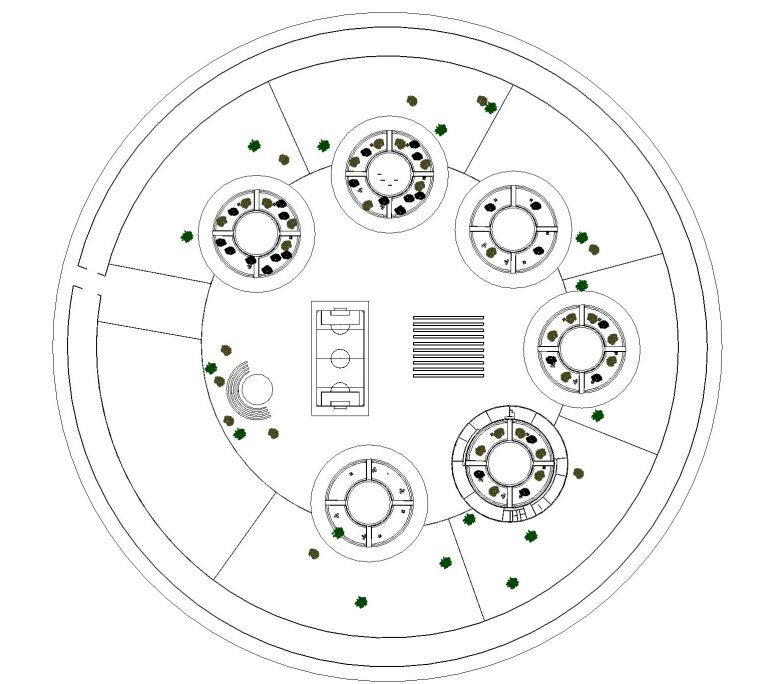
Biophilia: inclusion of nature reduces stress and promotes healing

Avoid Sharp Angles: Scientist the amygdala (fear) part of your brain is more active when looking at sharp objects

Simulate the outside world: making life after prison an easier transition

Education: Teaching new skills/trade is an important part in success after prison

Provide access to the outdoor/sun: Center ring is created for 12 hour access to nature v. 45 required by the country, each room has a private door to the inner circle



12 Hour open door policy: Letting the inmate have more control over daily activities like laundry, church, attend classes, go to the library or counseling.

Personal Bathrooms with doors: Dignifying design creates dignifying environments and people.

Smaller inmate numbers based on conviction charges: Creating smaller number of inmates within each building is easier to maintain. Personalizing the Prisons with like conviction so treatment can be adjusted accordingly.

Extra results

The U.S leads in incarceration rates. 693 out of 100,000 people are in prison.



UtahStateUniversity