



**Sierra Stuart**  
*Utah State University*

**Susie Tibbitts**  
*Faculty Mentor*

## Introduction

Many towns have historic areas, but why do they seem to stick around when it seems easier to start with a clean slate?

In general, the design of a building impacts the way a person feels and acts in a space. As for historic buildings, they are impactful in their own way. Historic buildings hold value, hidden treasures, sustainable qualities and a newfound way of bring something back to life.

## Methods

When conducting this research, I specifically researched the historic downtowns within Nashville, Tennessee, where I planned on placing this project, The Piercing Studio.

Honoring its value all while giving it a new purpose for the world in which surrounds the space was the biggest goal. This existing building takes on sustainable interiors in order to create a better environment while enriching the historic space.

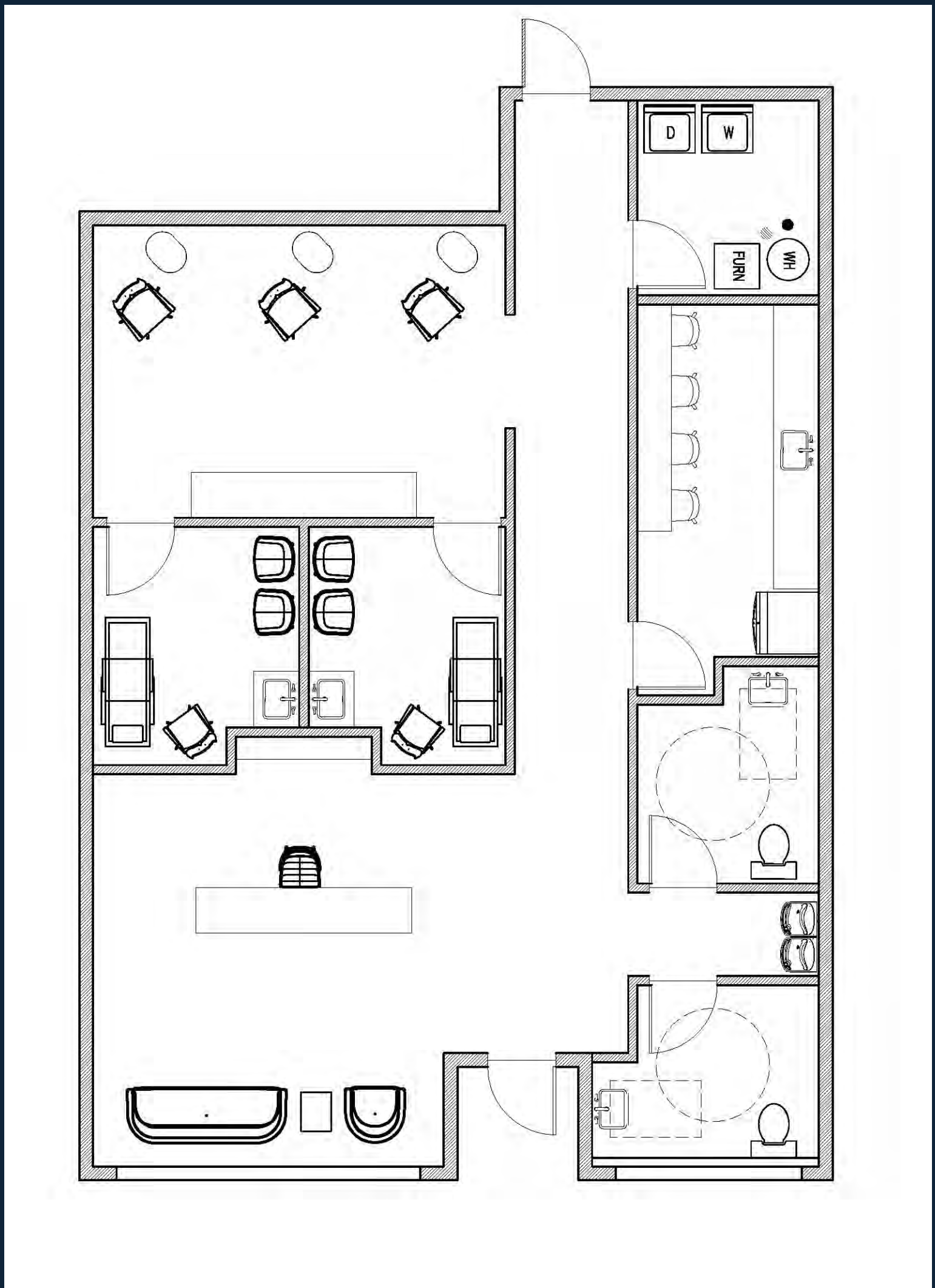
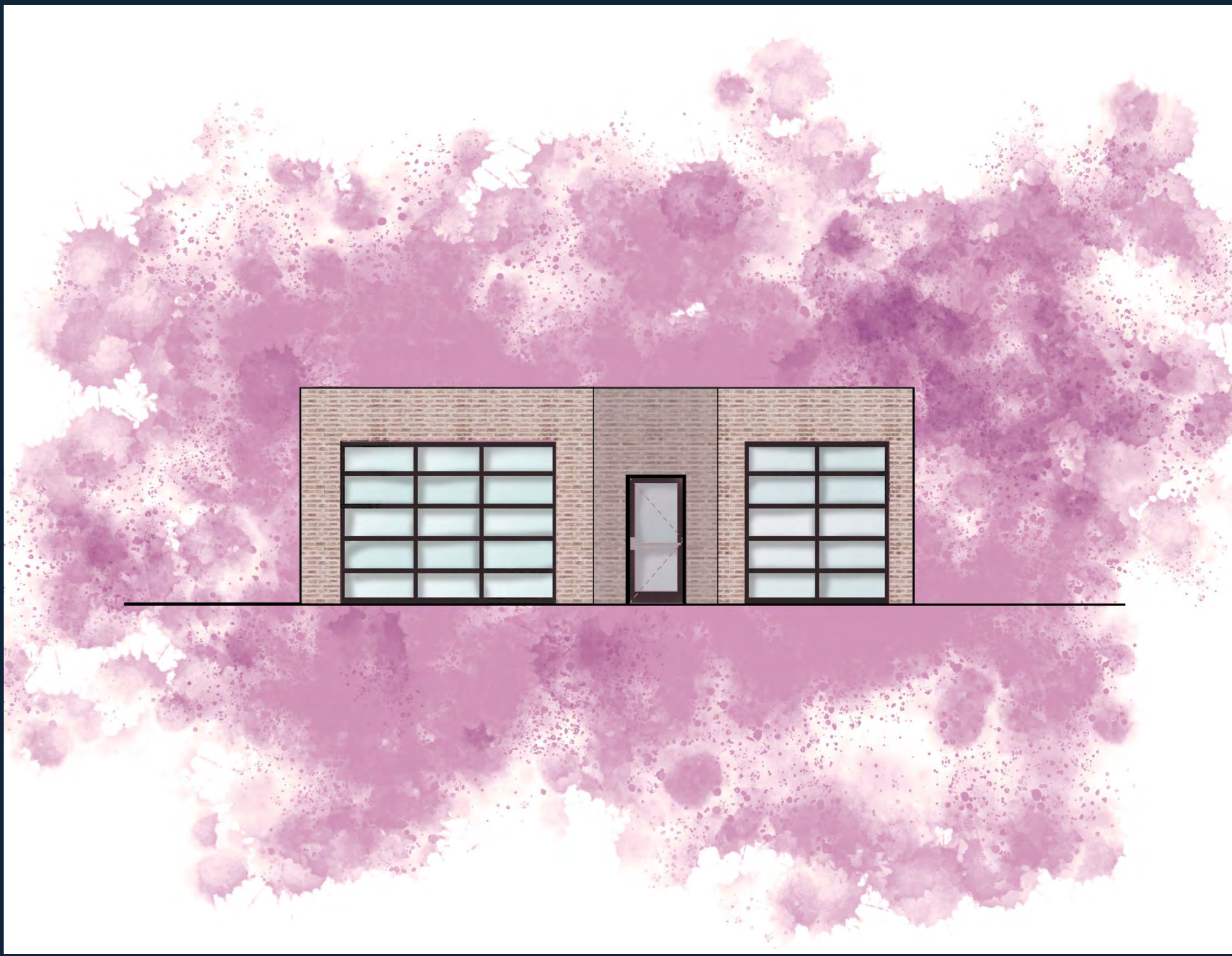


# Historic Buildings: The Impact On Sustainability and Design

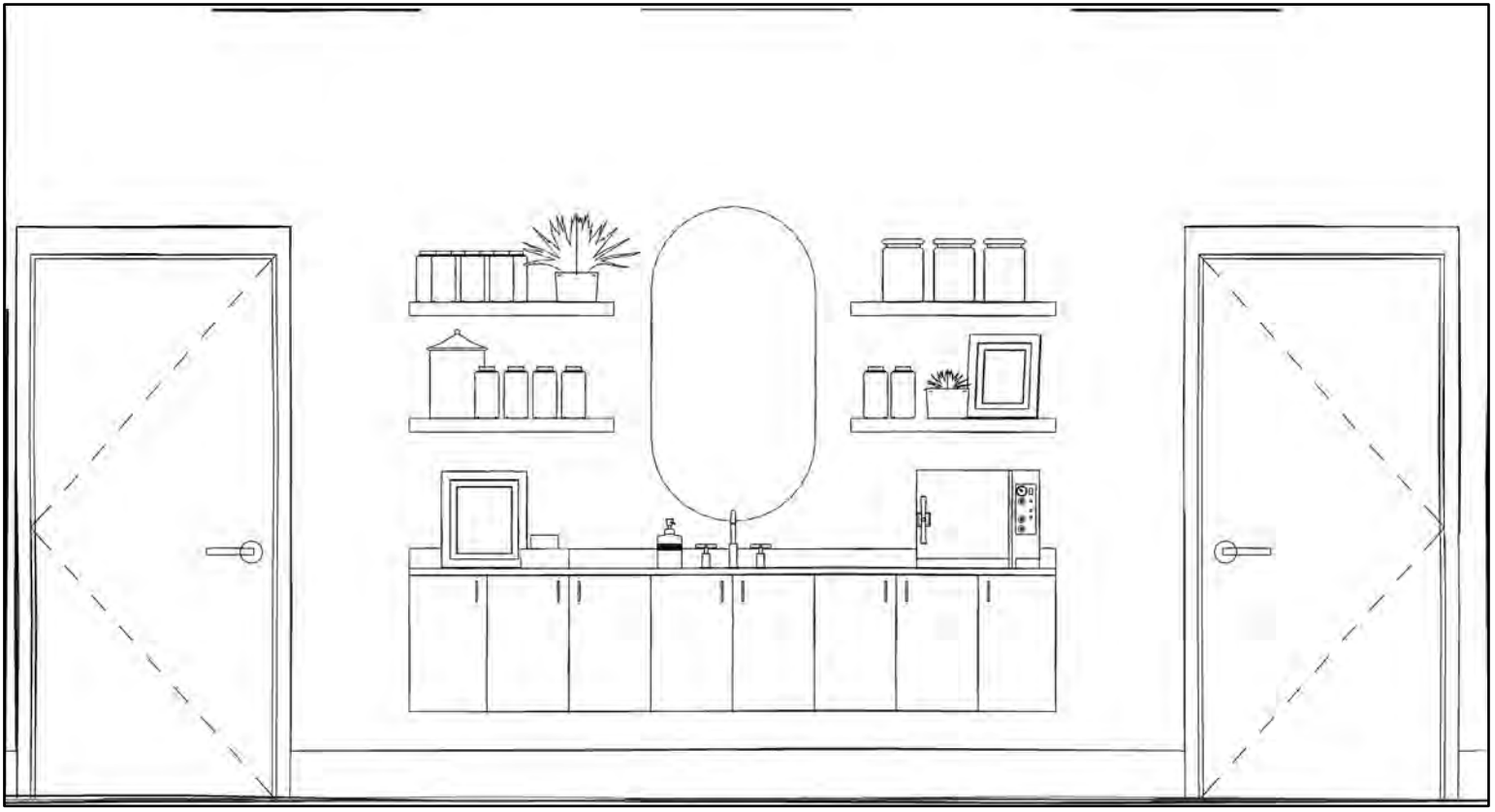
The bay area incorporates a well-lit space, with an existing brick wall and terrazzo flooring to liven up the space while keeping it sustainable.

The lobby incorporates an updated garage door to take on old architecture and performance fabrics that have good life cycle costs to incorporate historic aspects along with sustainability.

The exterior was refurbished to show its historic nature while creating a new welcoming space with a monochromatic color scheme throughout most of the rooms, offering a moody, modern vibe to the clientele.



Terrazzo flooring, high quality commercial furniture, durable fabrics, rigid insulation and bamboo cabinets attribute to creating a sustainable design.



## Key Findings

Keeping historic buildings and essentially repurposing them reduces material consumption and ultimately the energy that would be used to demolish and reconstruct a new one in its place according to a study done by the Brookings Institution. The materials originally used in these building were also made to last unlike some new materials found today which increases the life cycle of products.

## Conclusion

Historic buildings can impact sustainability in positive ways and can aid in creating a space that holds timeless memories, but also is a space where new ones can be carried on. Design is important in enhancing historic areas while helping the global climate in positive ways during negative times.



**UtahStateUniversity**