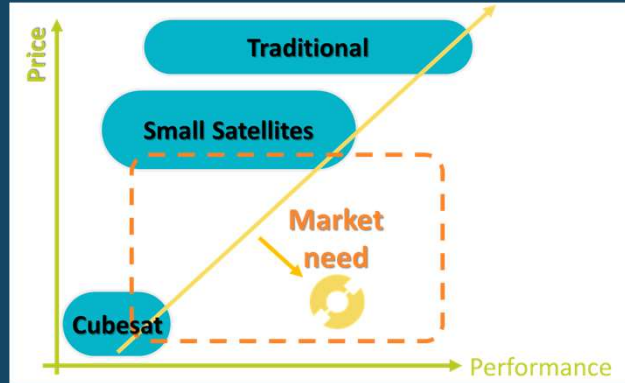




Disrupting the Space Industry with Open Source

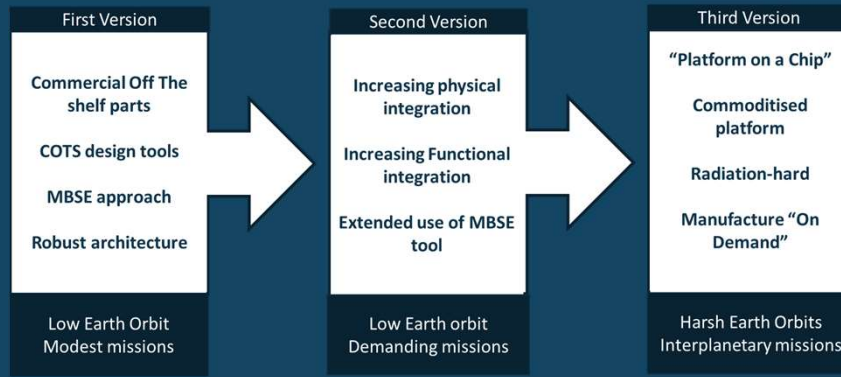
KISPE's goal is to build a community of open-source contributors, collaborators and beneficiaries, including those from CubeSat and SmallSat teams who are at the forefront of collaborating, adopting and championing non-traditional approaches to delivering space missions, to develop a design that is freely available for all to use

Disrupt Price:Performance



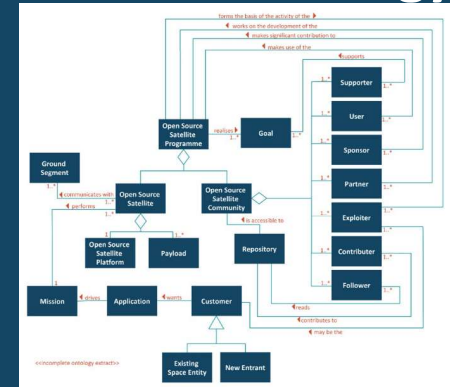
A new approach is required to shift away from current price:performance line

Capability Roadmap



Increasing functional and system integration with each subsequent version of the design

Platform Ontology



A common language for communicating, sharing and exploring system relationships

First Version

- 25kg-250kg Spacecraft mass
- 70% Payload mass fraction
- Flexible payload accommodation
- 10W-1kW Payload power, scalable to suit mission power needs
- Ability to be 3-Axis stabilised - for communications and sensor payloads
- 400km to 850km altitude
- <14 month recurrent delivery schedule
- 5 to 7-year lifetime
- Recurrent price of \$1m for 50kg, £1m for 100kg
- A cost-effective modular, scalable, flexible, robust, reliable microsatellite platform for LEO missions

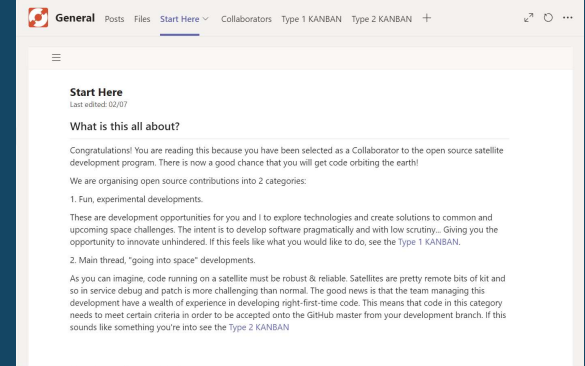
A cost-effective modular, scalable, flexible, robust, reliable platform for LEO missions

Active Satellite Organisations

Organisation	Logo	Website	Primary Activities
AALTO Satellites		https://www.aalto.fi/en/spacecraft	Cubesat Subsystems, Missions, Ground segment designs and tools
Aristotle Space and Aeronautics Team		https://asat.gr/	Cubesat Subsystems, Missions, Science Payloads
Fossasystems		http://fossa.systems/	Cubesat Subsystems, Missions, Ground receivers
LibreSpace		www.libre.space	Cubesat Subsystems, Spacecraft, Missions
LibreCube		https://librecube.org/	Open Source Earth and Space Exploration
Open Source Satellite Programme		www.opensourcesatellite.org	Microsatellite components, subsystems, Platforms and Missions

There are only a few companies in the world developing open source spacecraft

Collaborator Workspace



Accepted collaborators have access to view and contribute to planned activities

linkedin.com/company/open-source-satellite
twitter.com/satelliteopen

Register to participate:
opensourceatellite.org/register

Anita Bernie: abernie@kispe.co.uk
 John Paffett: jpaffett@kispe.co.uk
www.opensourcesatellite.org