



## European Red Mite (*Panonychus ulmi*)

Diane G. Alston, Entomologist • Michael E. Reding, Entomologist<sup>1</sup>

### Do You Know?

- European red mite infestations are sporadic in Utah orchards, but injury can be severe when populations are high
- Adult and immature mites feed on leaves causing white stippling, bronzing, and defoliation
- Tree vigor and fruit color, size, and production can be reduced
- If the mite is present, the most effective control is a delayed dormant oil spray applied as overwintering eggs begin to hatch
- If active mite stages persist following bloom, early summer treatment is recommended based on presence-absence sampling



The female European red mite has a red body with white legs and hairs and spots on her back (E. Beers, Washington State University).



The male is yellow and green-black with a tapered hind end (B. Croft).



Feeding injury by European red mite to apple leaves on the right (L. Hull, Pennsylvania State University).

The European red mite is native to Europe and was first introduced into the Pacific Northwest in the early 1900s. Since then, it has spread and become established throughout the United States and Canada.

Mites are tiny arthropods, measuring less than 1/60 inch (0.42 mm) that are closely related to ticks and spiders. The European red mite belongs to a group of plant-feeding mites, called spider mites (Order Acari, Family Tetranychidae), which includes the twospotted and McDaniel spider mites. However, unlike its cousins, the European red mite does not spin copious amounts of webbing.

European red mite also has a more limited host range than the twospotted and McDaniel spider mites. It attacks many crops and ornamentals, but is limited to perennial trees and shrubs. Infestations of European red mite are somewhat sporadic in Utah orchards; however, infestations can be severe and cause substantial crop and tree injury. Unlike twospotted and McDaniel spider mites, the European red mite overwinters on tree limbs in the egg stage. Therefore, its management is considerably different from that of webspinning spider mites.

Flare-ups of European red mites are often associated with improper pest management and pesticide application practices. The red mite has a long history of developing resistance to miticides, but that is usually not a problem in orchards with a low toxicity or soft pesticide program. In Utah, European red mite populations tend to peak during early summer if a delayed dormant oil spray was missed, or if other factors cause high mite populations in the

<sup>1</sup>USDA ARS, Wooster, OH

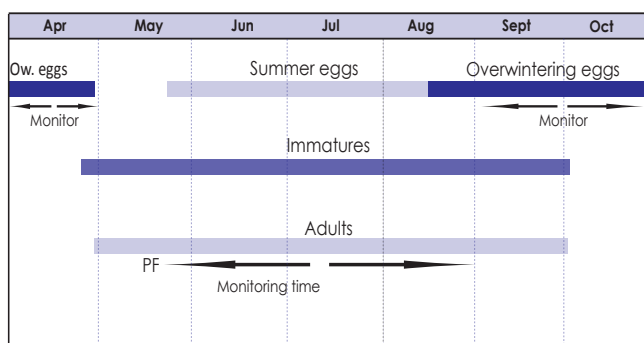
orchard. Populations then subside somewhat during the hottest mid-summer months, but they may peak again in late summer to early fall if biological control agents are not established to suppress them. There can be from five to eight overlapping generations per year.

## PLANT HOSTS

European red mite is a pest of pome and stone fruits, nuts, berries, and some ornamental trees and shrubs. Apple and pear cultivars vary in their susceptibility to mite injury. The highest red mite populations are typically seen on Red Delicious and Rome apples. Although spider mite injury to pear is more commonly caused by the twospotted or McDaniel spider mite, when injury from red mite does occur, it is usually more severe on pear than apple.

pear      peach      cherry  
apple      plum      prune  
cane and bramble berries  
some ornamental trees and shrubs

## European Red Mite Life History



The long arrow represents times when immatures and adults should be monitored (PF = petal fall). Overwintering eggs can be monitored from fall through early spring (short arrows).

### Egg-Overwintering Stage

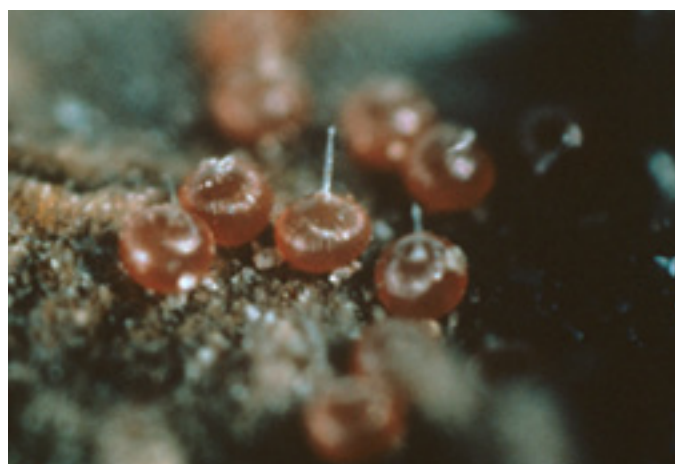
- **Size, color, and shape:** 1/160 inch (0.16 mm) in diameter, dark red, and spherical with small ridges running top to bottom and a slender tassel or stalk
- **Where:** overwintering eggs are found on rough bark at the bases of buds and spurs, on small limbs and twigs, and in limb crevices and forks; summer eggs are found along leaf veins predominantly on the undersides of leaves and sometimes on fruit if populations are high
- **When:** overwintering eggs are deposited during August and September and hatch the following spring between tight cluster and bloom; summer eggs hatch throughout the summer

### Immature-Damaging Stage

There are three forms of immatures—larva, protonymph, and deutonymph—with a molt between each stage. A molt is where the cuticle or “skin” is shed. Each molt is preceded by a resting period during which the immature mite stops feeding and the body appears silvery.



Overwintering eggs look like paprika sprinkled on twigs, buds, and spurs (Utah State University Extension).



Eggs are spherical with a slender stalk on top (E. Beers, Washington State University).

### Larva

- **Size, color, and shape:** slightly larger than the egg, orange red, and has three pairs of legs
- Moves to young leaves and begins feeding, usually on the undersides

### Protonymph and Deutonymph

- **Size, color, and shape:** gradually larger, red, and have four pairs of legs; greenish red just after molting, turning bright red as feeding resumes
- Sex is distinguished at the deutonymphal stage as females grow larger and more oval than males
- Feed on the undersides of leaves

### Adult-Damaging Stage

- **Size, color, and shape:** female is about 1/72 inch (0.35 mm) long, brick red, and oval shaped with white hairs on her back and white spots at the base of the hairs; male is 1/80 inch (0.32 mm) long, red tinged with yellow, and more slender and tapered near the hind end
- **Where:** feeds mainly on the undersides of leaves; moves to upper leaf and fruit surfaces when populations are high
- **When:** first appears around petal fall and mates immediately

- Female begins laying eggs after 2 days; lives up to 20 days and lays an average of 30 to 35 eggs
- One generation can be completed in 10 to 25 days, depending on the temperature; typically there are five to eight overlapping generations per year
- Adults will “balloon” in order to disperse when densities are high by crawling to a high point, rearing up on their hind legs, and catching a wind current to balloon on a silken thread

## HOST INJURY

Mites feed by piercing leaf tissue with their mouth parts and sucking out the cellular contents. Fruit trees and cultivars differ in their susceptibility to mite damage. Pear is most sensitive to mite feeding, then stone fruit. Apple is the most tolerant. The effects of mite feeding on trees accumulate over time.

### Pear

- Feeding causes leaves to lighten and become mottled or stippled
- Heavy feeding can cause severe injury, such as necrosis, leaf burn, and defoliation
- Leaf burn can even occur after mites have been controlled if high temperatures follow feeding damage
- Severe damage and defoliation can cause a reduction in fruit size and return crop load
- Red strains of pear cultivars are more tolerant to mite injury than green strains; Bartlett and Comice are more tolerant to leaf burn and defoliation than D’Anjou and Bosc

### Apple

- Red Delicious usually has higher red mite populations, but Golden Delicious is more susceptible to damage
- Feeding causes white stippling on leaves that can eventually turn brown, called bronzing
- High populations can cause defoliation
- The following year’s crop may be reduced in both fruit size and amount of fruit
- Eggs may be deposited on the calyx end of fruit, causing downgrading and processing problems

### Stone Fruits

- Injury is intermediate compared to pear and apple
- Light infestations cause leaf speckling
- Heavy infestations can cause the following: bronzed and pale leaves; undersized and poor quality fruit; reduced tree vigor; and decreased yield the year after significant June and July infestations because fewer fruit buds are formed
- Extremely heavy infestations can cause leaf drop and tree stress, which can lead to reduced winter hardiness

## TIMING CONTROL

Because mites may be feeding on trees from the pre-bloom stage through fall, it is important to continually monitor for mites. Mites can build up at different times and in different blocks or years. Therefore, make sure to not only consider the mite density at one point in time,

but to also monitor densities over a period of time and use this information to assist with control decisions.

## Delayed Dormant

The most effective and easiest time to control the European red mite on all types of fruit trees is during the delayed dormant period (half-inch green to tight cluster) before overwintering eggs on the limbs begin to hatch.

- Carefully scout orchards from late fall through early spring for the tiny, bright red eggs on small limbs and twigs near buds and spurs
- Scouting for overwintering eggs is especially important if European red mite was detected the previous season
- Large numbers of overwintering eggs may look like paprika sprinkled on tree limbs
- Reddish stains on the fingers after handling infested limbs, or leaves later in the season, indicate the presence of European red mite

## Post Bloom

- Immatures and adults should be monitored beginning at petal fall to determine if early summer miticide treatments are necessary; keep in mind that there may be a lag time in buildup of predator populations
- A reliable and easy-to-use sampling method for all spider mites is the presence-absence, or binomial, method; this method requires the scout to determine only the proportion of infested leaves and does not require a count of individual mite numbers; refer to the bulletin on “[Web Spinning Spider Mites](#)” for a complete description of how to sample
- Use the European red mite look-up table (see Table 1) to estimate the number of mites per leaf
- Use the “[Spider and Predatory Mites Sampling Form](#)” to record the number of infested leaves during sampling

**Table 1.** European red mite presence-absence sampling look-up table.

Number of leaves out of 10 with at least one mite present*	Apple and Pear Estimated number of European red mites per leaf on apple and pear	Cherry and Peach Estimated number of European red mites per leaf on cherry and peach
1	0.1	0.1
2	0.3	0.3
3	0.5	0.7
4	0.8	1.1
5	1.2	1.7
6	1.8	2.4
7	2.5	3.5
8	3.5	5.3
9	5.7	8.7
10	--	--

**\*Note:** For each tree sampled, determine the number of leaves out of 10 with at least one mite present.



## MANAGEMENT

### Delayed Dormant

If overwintered eggs are present, apply a delayed dormant oil spray (half-inch green to tight cluster). This treatment is the most important management tactic for the European red mite. Eggs are most vulnerable to control just before hatching. If a delayed dormant spray is missed, later sprays may be required to keep European red mite populations below damaging levels. This may result in the destruction of beneficial predatory mites and insects and the outbreak of secondary pests, such as twospotted and McDaniel spider mites. Although a delayed dormant spray may not provide season-long control, it can prevent early summer buildup of the mite.

#### Recommended chemical:

- Dormant horticultural oil (superior, supreme, or other oil designed to be applied during the dormant season)

### Post Bloom

If European red mites are present later in the season, the grower will need to make a decision about whether to use a miticide or rely on natural predators for control. Use the treatment thresholds for web spinning spider mites as a guideline (see "[Web Spinning Spider Mites](#)" bulletin), but have a higher tolerance for European red mite because its populations do not build as rapidly during the hot summer months as do populations of webspinning mites.

### Biological Control

The major predators of European red mite are: the predatory mite, *Zetzellia mali*; the small black lady beetle, *Stethorus picipes*; green lacewings, *Chrysopa* spp.; brown lacewings, *Hemerobius* spp.; minute pirate bug, *Orius tristicolor*; and campyloomma bug, *Campyloomma verbasci*.

The more common mite predator, western predatory mite (*Typhlodromus occidentalis*), will feed to some extent on immature stages, but it prefers twospotted and McDaniel spider mites over European red mite. Relying on predators for natural biological control of European red mite is not as reliable as the biological control of web spinning spider mites by the western predatory mite. Therefore, the presence of predators in orchards should be considered in any management decision, but be aware that biological control of European red mite is generally less effective than that of twospotted and McDaniel spider mites.

### Chemical Control

If European red mite reaches economically damaging



*Zetzellia mali* is a common predator of the European red mite (Tree Fruit Research and Extension Center, Washington State University).

levels early in the summer, using a miticide before predators begin moving into trees is preferable to waiting until mid to late summer when predators are more abundant. Midsummer miticide applications can upset the biological control of web spinning spider mites and insects.

From petal fall through summer, if chemical control of European red mite is required, the following materials are registered for tree fruit crops in Utah:

- abamectin (Agri-Mek)<sup>R</sup>
- clofentezine (Apollo)
- fenbutatin-oxide (Vendex)<sup>R</sup> not on apricot
- hexythiazox (Onager, Savey)
- insecticidal soap (M-Pede, Safer's, others)<sup>O,H</sup>
- summer-weight oil (horticultural mineral oil, canola oil, soybean oil, others)<sup>O,H</sup>

<sup>O</sup>Organic (OMRI-approved) products available

<sup>H</sup>Homeowner products available

<sup>R</sup>Restricted use insecticide; requires a pesticide applicator license to purchase and apply

All brands are registered trademarks. Examples of brands may not be all-inclusive, but are meant to provide examples of products registered in Utah. The availability of pesticides may change. Always read the label for registered uses, application and safety information, and protection and pre-harvest intervals.

Use lower label rates if predators are present. To avoid selecting for resistance, rotate different types of miticides. Once a miticide is applied, mite densities should be monitored 1 week later. A second application may be required in 7 to 10 days following the first application if a large number of eggs and hatching larvae are present.

**Precautionary Statement:** Utah State University Extension and its employees are not responsible for the use, misuse, or damage caused by application or misapplication of products or information mentioned in this document. All pesticides are labeled with active ingredients, directions for use, and hazards, and not all are registered for edible crops. "Restricted use" pesticides may only be applied by a licensed applicator. The pesticide applicator is legally responsible for proper use. USU makes no endorsement of the products listed herein.

Utah State University is committed to providing an environment free from harassment and other forms of illegal discrimination based on race, color, religion, sex, national origin, age (40 and older), disability, and veteran's status. USU's policy also prohibits discrimination on the basis of sexual orientation in employment and academic related practices and decisions. Utah State University employees and students cannot, because of race, color, religion, sex, national origin, age, disability, or veteran's status, refuse to hire; discharge; promote; demote; terminate; discriminate in compensation; or discriminate regarding terms, privileges, or conditions of employment, against any person otherwise qualified. Employees and students also cannot discriminate in the classroom, residence halls, or in on/off campus, USU-sponsored events and activities. This publication is issued in furtherance of Cooperative Extension work, acts of May 8 and June 30, 1914, in cooperation with the U.S. Dept. of Ag., Noelle E. Cockett, Vice President for Extension and Agriculture, Utah State University.