



## Beneficial insects: beetles

Erin W. Hodgson  
Extension Entomology Specialist

Ron Patterson  
Carbon County Extension

### What You Should Know

- Many beetles are beneficial insects, either predatory on other insects or eating plants considered weeds.
- For certain widespread insect and weed problems, beetles are intentionally released to biological control.
- Sometimes beneficial beetles are mistaken for pests, and so distinguishing species is important for reducing treatment costs.

There are many beneficial beetles in Utah besides lady beetles or ladybugs. Beetles can significantly reduce common insect and weed problems and in some cases eliminate the need for chemical control. Examples of beneficial beetles include: ground beetles, rove beetles, tiger beetles and tortoise beetles. Many of these beetles are native to Utah, while others have been purposely introduced to help control damage from exotic insect and weed pests (Figs. 1, 2). As with most beneficial insects, there can be negative side effects or consequences associated with too many insects in a given area. But in general, beneficial beetles suppress persistent insect problems.



Fig. 1. Musk thistle is readily eaten by beneficial insects like thistle-head weevil larvae.<sup>1</sup>



Fig. 2. Rove beetles can be beneficial insects.<sup>2</sup>

### Beetle Life Cycle

Beetles belong in the largest insect order Coleoptera and go through complete metamorphosis (Fig. 3). Mated females lay football-shaped eggs, usually starting off nearly colorless, but eventually turning dark yellow or brown. Eggs hatch into mobile larvae; often larvae are the predatory life stage and will eat soft bodied insects like aphids. Larvae go through several molts before transforming into a resting pupae. Adults emerge from pupal cases with functional wings and reproductive organs. Adults can be carnivores or herbivores. The total development time to adulthood is dependant on the temperature and beetle species. Beetles typically have one generation per year, but some species can have three or more per year.

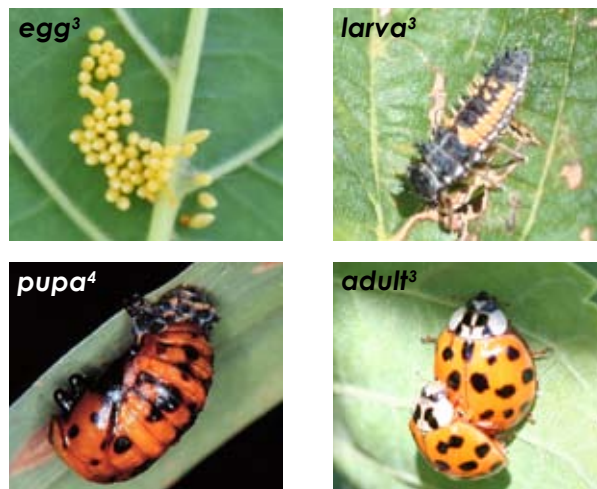


Fig. 3. Beetle life stages.

## Ground Beetles

The ground beetles are a large group of predatory insects in the family Carabidae. Adults and larvae are considered beneficial and will eat almost any type of insect, including: caterpillars, root maggots, snails and other soil dwelling insects. There are more than 3,000 different kinds of ground beetles in North America and they range from 6-30 mm in length. Many will have a solid, shiny black body with hardened and ridged forewings (Figs. 4-6). Some ground beetles have a black body and iridescent red, purple or green markings on the forewings. Most ground beetles have a relatively long body, flattened head, threadlike antennae, and long legs. Sometimes adults can have enlarged mandibles for grasping prey. As the name suggests, adults prefer to run on the ground and rarely fly. In general, adults are actively hunting on the ground at night and hide under rocks or debris during the day.



Fig. 4. Ground beetle adult.<sup>5</sup>



Fig. 5. Ground beetle adult.<sup>5</sup>



Fig. 6. Ground beetle adult.<sup>6</sup>

## Rove Beetles

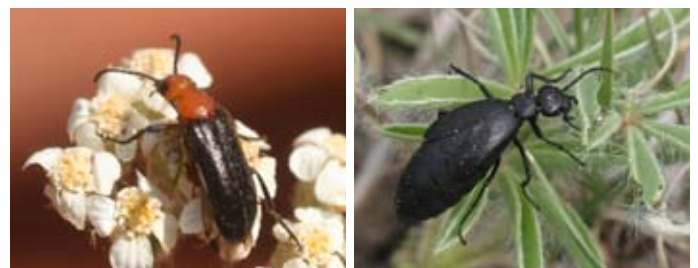
Rove beetles are another large group of predatory insects. Rove beetles are in the family Staphylinidae and more than 3,000 different species are found in North America. Rove beetle adults and larvae are predators of other insects, but will also eat decaying vegetative matter. The adults are very easily distinguished from other beetles because they have shortened forewings that expose the end of the abdomen (Fig. 7). Although rove beetles can fly, the adults are more often seen running on the ground. Adults are shiny brown or black, have enlarged mandibles for grasping prey, and range in size from 2-20 mm in length. Rove beetles can be found under rocks or wood, or around mushrooms or other decaying vegetation. Some rove beetles display a defensive behavior, similar to scorpions when disturbed, of raising the abdomen in a defensive posture.



Fig. 7. Rove beetle adult.<sup>7</sup>

## Blister Beetles

Blister beetles are in the family Meloidae, and more than 300 species are found in the U.S. A common species in Utah is the spotted blister beetle, *Epicauta maculata*. Often blister beetle adults will have obvious "shoulders" that are wider than the head. Adults are relatively soft bodied and long legged compared to other beetles (Figs. 8, 9). Blister beetle adults range from 12-19 mm in length; forewing coloration varies greatly between species. Larvae are considered the beneficial stage, often eating grasshopper eggs. Unfortunately, larvae and adults secrete cantharidin, a poisonous chemical that can blister skin or cause painful swelling. Blister beetles are of economic concern when they feed in alfalfa hay. Consumption of blister beetle larvae by cattle or horses can cause serious illness or death. Hay and forage fields that have significant blister beetle populations should be cut pre-bloom and/or avoid conditioning prior to baling.



Figs. 8 and 9. Blister beetle adults.<sup>6,6</sup>

## Tiger Beetles

Another group of predatory insects are the tiger beetles in the family Cicindelidae. There are at least 200 species of tiger beetles in North America and they are closely related to the ground beetles. Adults and larvae are predatory and will consume almost any type of insect. Tiger beetle adults are often brightly colored metallic blue, green, or orange, and range from 10-20 mm in length (Figs. 10, 11). Adults have long legs and are quick runners. Tiger beetles are considered ambush feeders and will seize prey with powerful sickle-like mandibles. The S-shaped larvae construct vertical burrows in dry soil and wait for prey to fall inside. Tiger beetles have one generation per year and commonly hunt during the day in gardens, stream edges, forests and deserts.



Fig. 10. Six-spotted tiger beetle adult attacking a caterpillar.<sup>8</sup>



Fig. 11. Crimson salt flat tiger beetle adult.<sup>6</sup>

## Tortoise Beetles

Tortoise beetles are a distinctive group of leaf beetles in the family Chrysomelidae. There are 35 species of tortoise beetles in North America. Adults can be confused with lady beetles because of the turtlelike shape of the forewings (Figs. 12, 13). Adults range from 4-13 mm in length and often the head is completely concealed from above. Adults are metallic and very colorful, ranging from gold to green to yellow. The larval and adult stages eat common weeds, such as bindweed, thistle, horse nettle, and burdock. Sometimes tortoise beetles are considered pests because they also eat sweet potato, tomato, eggplant and a variety of hardwood trees. Two tortoise beetles are used for biological control of weeds: golden tortoise beetle, *Metritona bicolor*, on bindweed; and thistle tortoise beetle, *Cassida rubiginosa*, on musk thistle.



Fig. 12. Tortoise beetle larva and adult.<sup>6</sup>



Fig. 13. Golden tortoise beetle adult.<sup>9</sup>

## Other Beneficial Beetles

**Two-spotted melyrid**, *Collops bipunctatus*, is a soft-winged flower beetle in the family Melyridae (Fig. 14). The adult body is widest at the rear and the forewings are relatively soft compared to other beetles. The legs are slender and the antennae are sawtoothed. This beetle has a voracious appetite for aphids. Adults have an orange body with a dark green head and metallic green forewings. The orange "shoulders" have two dark spots.



Fig. 14. Two-spotted melyrid adult.<sup>6</sup>

**Saltcedar leaf beetle**, *Diorhabda elongata*, is a leaf beetle in the family Chrysomelidae (Fig. 15). This beetle is native to China, but was introduced into Utah to control saltcedar, or tamarisk. Adults are 5-7 mm long with alternating black and greenish stripes on the forewings. Both the adults and larvae are beneficial, eating saltcedar vegetation.



Fig. 15. Saltcedar leaf beetle.<sup>11</sup>

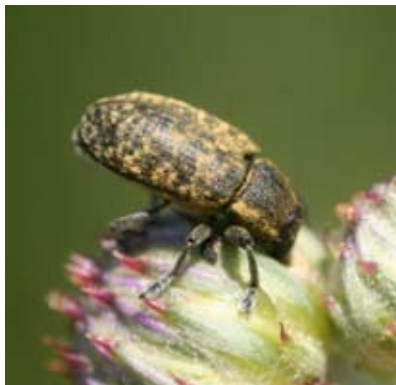


Fig. 16. Thistle-head weevil adult.<sup>6</sup> Fig. 17. Thistle-head weevil larva.<sup>10</sup>

**Thistle-head weevil**, *Rhinocyllus conicus*, is a weevil in the family Curculionidae (Figs. 16, 17). This beetle is native to Europe, Africa and Asia, but was introduced into North America for biological control of musk (nodding) thistle. Adults are 10-15 mm long and are yellowish brown in color with a pronounced snout. Mated females lay eggs on the bracts of musk thistle flower buds. Larvae are the beneficial life stage, eating the developing thistle seeds.

<sup>1</sup> Image courtesy of Ron Patterson, Carbon County Extension, Utah State University.

<sup>2</sup> Image courtesy of Jiri Hulcr, Michigan State University ([www.ipmimages.org](http://www.ipmimages.org)).

<sup>3</sup> Images courtesy of Erin W. Hodgson, Utah State University Extension ([www.utahpests.usu.edu/insects](http://www.utahpests.usu.edu/insects)).

<sup>4</sup> Image courtesy of Department of Entomology, University of Nebraska-Lincoln (<http://entomology.unl.edu/>).

<sup>5</sup> Image courtesy of Pennsylvania Department of Conservation and Natural Resources - Forestry Archive ([www.ipmimages.org](http://www.ipmimages.org)).

<sup>6</sup> Images courtesy of Whitney Cranshaw, Colorado State University Extension ([www.ipmimages.org](http://www.ipmimages.org)).

<sup>7</sup> Image courtesy of Hans Arentsen ([www.gardensafari.net/english/beetles.htm](http://www.gardensafari.net/english/beetles.htm))

<sup>8</sup> Image courtesy of David Cappaert, Michigan State University ([www.ipmimages.org](http://www.ipmimages.org)).

<sup>9</sup> Image courtesy of Clemson University, USDA Cooperative Extension Slide Series ([www.ipmimages.org](http://www.ipmimages.org)).

<sup>10</sup> Image courtesy of Loke T. Kok, Virginia Polytechnic Institute and State University ([www.ipmimages.org](http://www.ipmimages.org)).

<sup>11</sup> Image courtesy of Bob Richard, USDA-APHIS-PPQ ([www.ipmimages.org](http://www.ipmimages.org)).

**Precautionary Statement:** All pesticides have benefits and risks, however following the label will maximize the benefits and reduce risks. Pay attention to the directions for use and follow precautionary statements. Pesticide labels are considered legal documents containing instructions and limitations. Inconsistent use of the product or disregarding the label is a violation of both federal and state laws. The pesticide applicator is legally responsible for proper use.

Utah State University is committed to providing an environment free from harassment and other forms of illegal discrimination based on race, color, religion, sex, national origin, age (40 and older), disability, and veteran's status. USU's policy also prohibits discrimination on the basis of sexual orientation in employment and academic related practices and decisions. USU employees and students cannot, because of race, color, religion, sex, national origin, age, disability, or veteran's status, refuse to hire; discharge; promote; demote; terminate; discriminate in compensation; or discriminate regarding terms, privileges, or conditions of employment, against any person otherwise qualified. Employees and students also cannot discriminate in the classroom, residence halls, or in on/off campus, USU-sponsored events and activities. This publication is issued in furtherance of Cooperative Extension work, acts of May 8 and June 30, 1914, in cooperation with the U.S. Department of Agriculture, Noelle Cockett, Vice President for Extension and Agriculture, Utah State University.